

April 2025



RELEVANT
GOLD

TSXV:RGC
OTCQB:RGCCF



A BELT-SCALE GOLD OPPORTUNITY IN MINING-FRIENDLY WYOMING



CAUTIONARY STATEMENT

This presentation contains certain statements that constitute forward looking information within the meaning of applicable securities laws. These statements relate to future events of Relevant Gold Corp. (“Relevant” or “the Company”). Any statements that express or involve discussions with respect to predictions, expectations, beliefs, plans, projections, objectives, assumptions or future events or performance (often, but not always, using words or phrases such as “seek”, “anticipate”, “plan”, “continue”, “estimate”, “expect”, “forecast”, “may”, “will”, “project”, “predict”, “potential”, “targeting”, “intend”, “could”, “might”, “should”, “believe”, “outlook” and similar expressions) are not statements of historical fact and may be forward looking information. Forward looking information in this presentation includes, but is not limited to, statements with respect to successfully consolidating further land packages, Relevant’s ability to raise sufficient capital to fund exploration programs and its obligations under property agreements, seek a listing on a recognized stock exchange, drilling plans, financing success, discovery and production of minerals, metal prices and currency exchange rates, timing of technical reports and drill results, corporate and technical objectives, permitting success and relationships with stakeholders.

Forward looking information involves known and unknown risks, uncertainties and other factors which may cause the actual results, performance or achievements of the Company to be materially different from any future results, performance or achievements expressed or implied by the forward-looking information. Such risks include, among others, the inherent risk of the mining industry; adverse economic and market developments; the risk that the Company will not be successful in completing additional acquisitions; risks relating to the estimation of mineral resources; the possibility that the Company’s estimated burn rate may be higher than anticipated; risks of unexpected cost increases; risks of labour shortages; risks relating to exploration and development activities; risks relating to future prices of mineral resources; risks related to work site accidents, risks related to geological uncertainties and variations; risks related to government and community support of the company’s projects; risks related to global pandemics and other risks related to the mining industry. The Company believes that the expectations reflected in such forward-looking information are reasonable, but no assurance can be given that these expectations will prove to be correct and such forward-looking information should not be unduly relied upon. These statements speak only as of the date of this presentation. The Company does not intend, and does not assume any obligation, to update any forward-looking information except as required by law.

This document does not constitute an offer to sell, or a solicitation of an offer to buy, securities of the Company in Canada, the United States or any other jurisdiction. Any such offer to sell or solicitation of an offer to buy the securities described herein or during the presentation will be made only pursuant to subscription documentation between the Company and prospective purchasers. Any such offering will be made in reliance upon exemptions from the prospectus and registration requirements under applicable securities laws, pursuant to a subscription agreement to be entered into by the Company and prospective investors.

The scientific and technical contents of this presentation have been approved by Mr. Brian C. Lentz, CPG, Chief Exploration Officer of the Company, who is a “Qualified Person” as defined by Canadian National Instrument 43-101 (Standards of Disclosure for Mineral Projects). Mr. Lentz is not independent of the Company.





TABLE OF CONTENTS

3

4 Exploration Thesis

10 Our Team

11 Corporate Overview

15 Our Projects

18 Bradley Peak Camp

22 South Pass Camp





OPPORTUNITY OF SCALE

The Abitibi Gold Belts; Prolific Orogenic Shear Zone Hosted Gold Deposits, > 250 Moz

4

ABITIBI GREENSTONE BELT

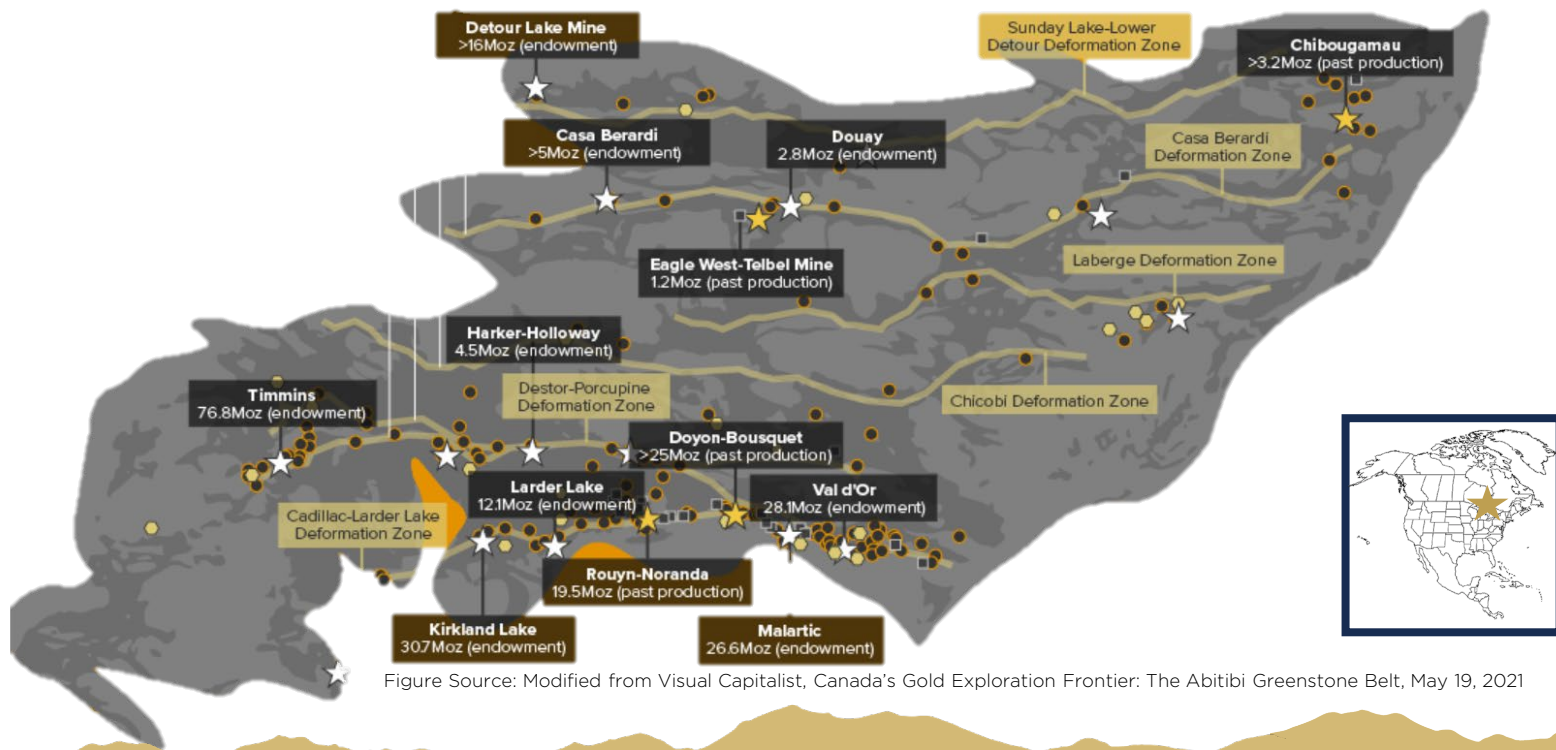


Figure Source: Modified from Visual Capitalist, Canada's Gold Exploration Frontier: The Abitibi Greenstone Belt, May 19, 2021





*“Now imagine if you could buy a ticket on the potential to **discover the next Abitibi** — virtually the entire belt — in the mining-friendly jurisdiction of **Wyoming**. That’s exactly the potential that Relevant Gold is offering investors.”*

GoldNewsletter
Vol. LI April 2024

Public domain photo. Gold mine, Lamaque, Abitibi, Quebec 1920



A UNIQUE DISCOVERY OPPORTUNITY IN **THE AMERICAN ABITIBI**



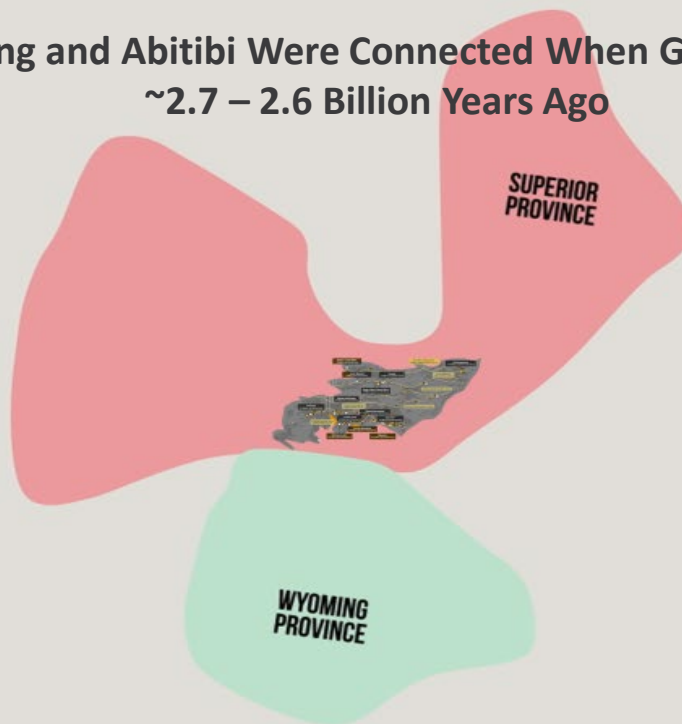
South Pass Gold Camp
Wyoming, USA



RELEVANT GOLD | CORPORATE PRESENTATION

RELEVANT GOLD
TSXV:RGC | OTCQB:RGCCF

Wyoming and Abitibi Were Connected When Gold Formed ~2.7 – 2.6 Billion Years Ago





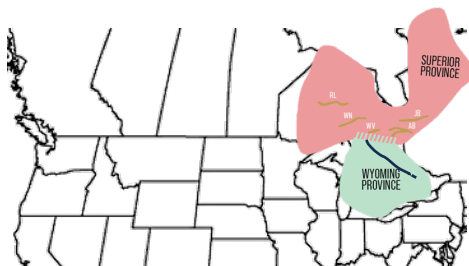
ABITIBI THESIS

8

SCAN FOR ANIMATION

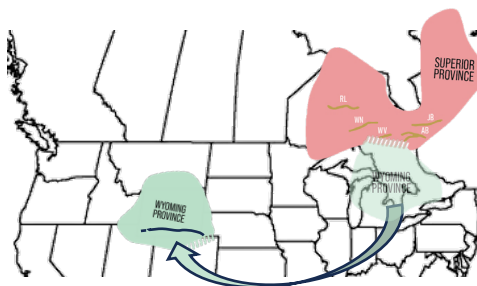


~2.65 BILLION YEARS AGO



The Wyoming Province and the Superior Province (Abitibi) were connected when gold mineralization occurred. (Chamberlain et. al. 2006)

~2.1 BILLION YEARS AGO



Continental rifting caused the Wyoming Province to separate, rotate, and move to its current location over many millions of years.

MODERN DAY



Relevant Gold applied these insights to secure the most prospective ground in Wyoming and is pursuing the next great orogenic gold discovery.

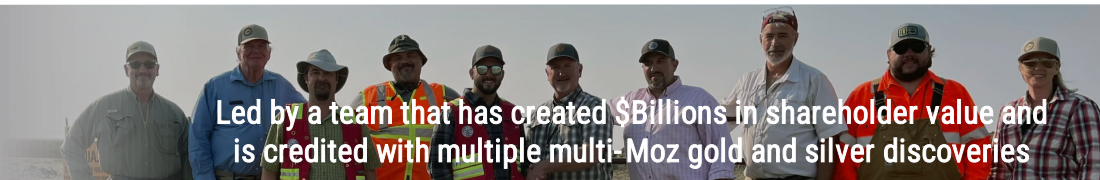




DEVELOPING THE AMERICAN ABITIBI

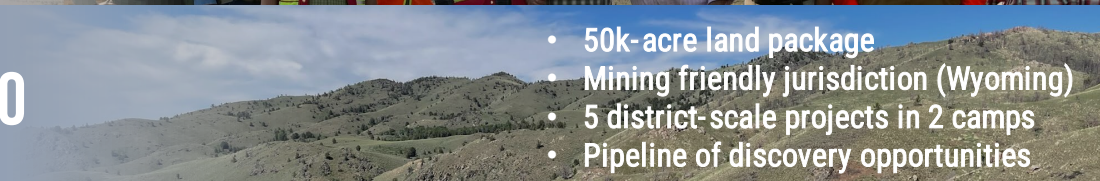
9

WORLD CLASS TEAM



Led by a team that has created \$Billions in shareholder value and is credited with multiple multi-Moz gold and silver discoveries

BELT-SCALE PORTFOLIO



- 50k-acre land package
- Mining friendly jurisdiction (Wyoming)
- 5 district-scale projects in 2 camps
- Pipeline of discovery opportunities

STRONG CORPORATE STRUCTURE

~103M shares outstanding. Key shareholders include:

KINROSS

Mr. Bill Bollinger

Mr. Rob McEwen

HIGH-GRADE PIPELINE



- 3 exploration permits
- 17 district-scale targets
- 3 drill-proven orogenic systems
- High-grade gold + silver + copper + zinc





MEET THE TEAM

10

BOARD OF DIRECTORS



INDEPENDENT DIRECTOR

Dr. Peter Megaw, PhD.
40+ Years Experience
PhD., Economic Geology

Cofounder, MAG Silver Corp.



INDEPENDENT DIRECTOR

Sarah Weber
20+ Years Experience
P. Geo./MBA

CEO, C3 Alliance Corp.



INDEPENDENT DIRECTOR

Ronald L. Parratt
40+ Years Experience
M.Sc. Economic Geology

Cofounder, Aux Ventures,



DIRECTOR, CEO

Rob Bergmann
15+ Years Experience
B.Sc. Geology

Founder, Relevant Gold Corp.



DIRECTOR, CXO

Brian Lentz
15+ Years Experience
B.Sc. Geology / P. Geo

Founder, Relevant Gold Corp.

MANAGEMENT



Mahesh Liyanage
RGC CFO



Kristopher Jensen
Corporate Comms. Mgr.



Jerome Hutchison
Community Advisor



Jacob Tyra
Operations Mgr.



Dr. Dean Peterson, PhD
Technical Advisor



Dr. Thomas Campbell, PhD
Technical Advisor



Dr. Kevin Chamberlain, PhD
Technical Advisor



FULL BIOS CAN BE FOUND AT [RELEVANTGOLDCORP.COM](https://www.relevantgoldcorp.com)

RELEVANT GOLD
TSXV:RGC | OTCQB:RGCCF



CORPORATE STRUCTURE

MARKET SUMMARY: (as of 3/23/2025)

Market Capitalization: ~\$42M
Avg. Volume: ~100K shares per day
52 week high/low: \$0.47/\$0.18

SHARE BREAKDOWN:

Issued and Outstanding: 103,119,859
Reserved for Issuance: 27,336,890*

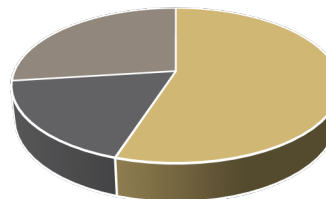
* Includes:

Founder's Warrants:	12,000,000 @ \$0.13	Expire 2025	\$1,560,000
Management/Board Options:	3,750,000 @ \$0.35	Expire 2027	\$1,312,500
General Warrants:	11,586,890 @ \$0.35	Expire 2026	\$4,055,411

Public Float: 29.4% (>30M free trading shares)

MAJOR SHAREHOLDERS: (as of 3/13/2025 financing)

- + Management (>15%)
- + Kinross Gold (19.9%)
- + Mr. William Guest Bollinger (19.9%)
- + Mr. Rob McEwen
- + Ultra High Net Worth Individuals
- + Retail Investors



Approximate Ownership Breakdown

- Management and Insiders
- Major Holders
- Retail Investors





TRADING PROFILE

RGC SHARE PERFORMANCE SINCE JANUARY 1, 2025



*Chart date: 3/23/2025





FINANCIAL SNAPSHOT

CASH ON HAND:
~\$8.5M CAD

BURN RATE:
\$97K / month
(not including property costs)

TOTAL CAPITAL RAISED:
\$23.8M
(since 2020)

FINDERS FEES PAID:
\$249K*
(since 2020)

*includes cash + warrants

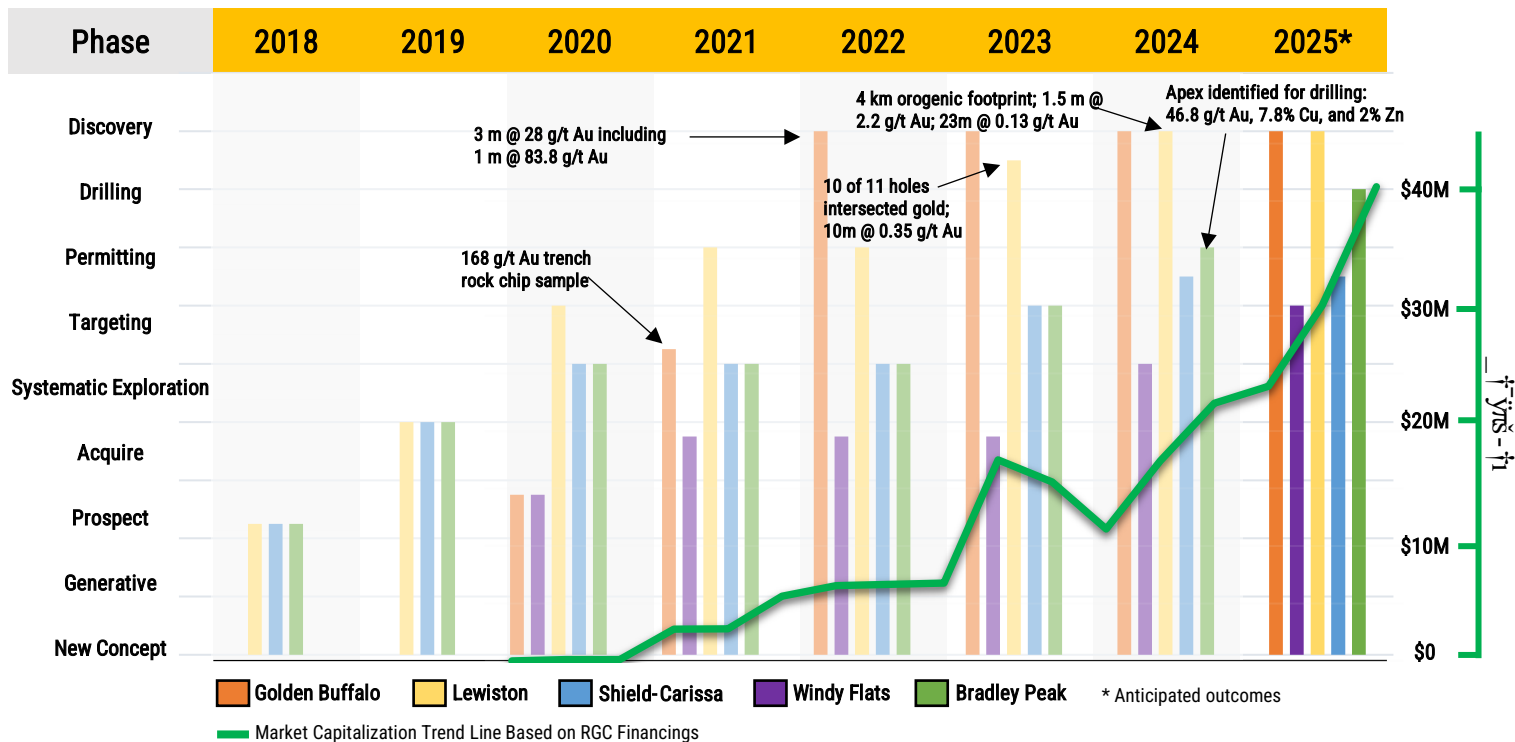
**SIMPLE COST OF
CAPITAL:**
1.05%

FY24 USE OF PROCEEDS:
<17.5%
G&A
>68.7%
exploration/evaluation





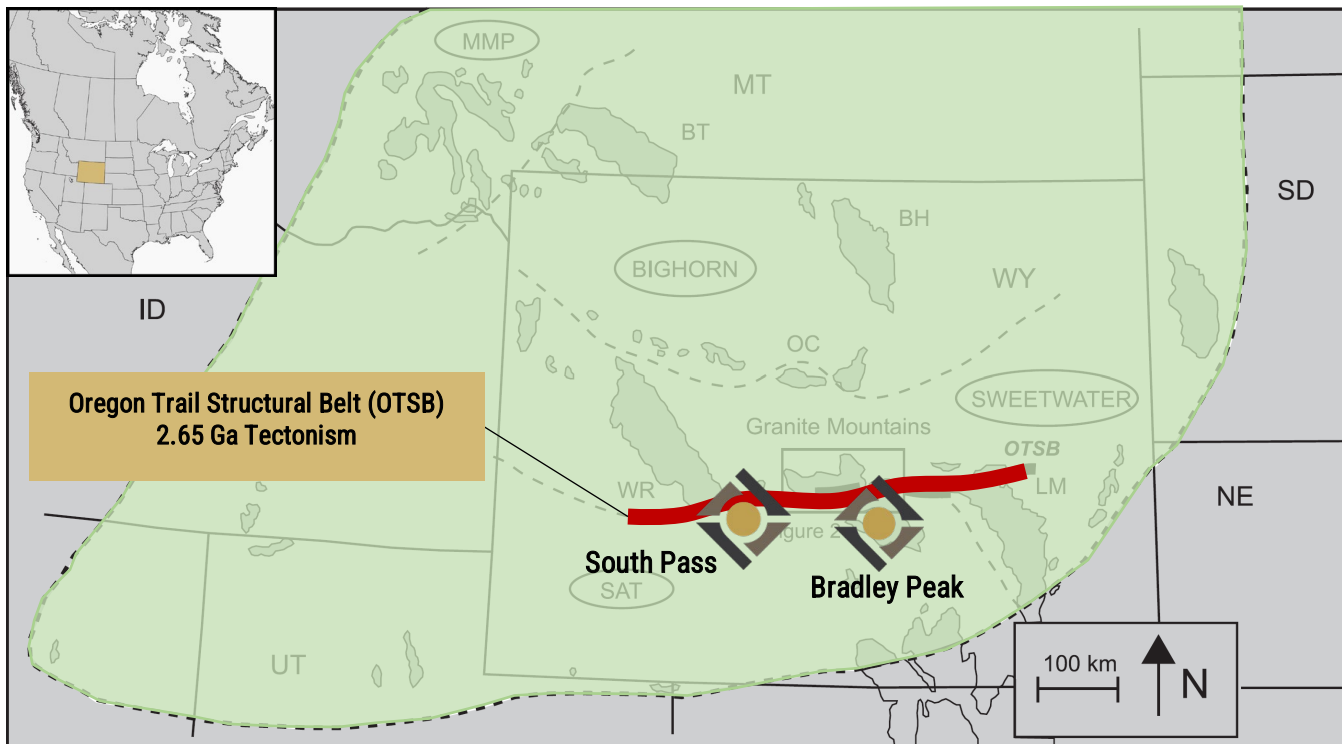
APPROACH | SYSTEMATIC EXPLORATION¹⁴





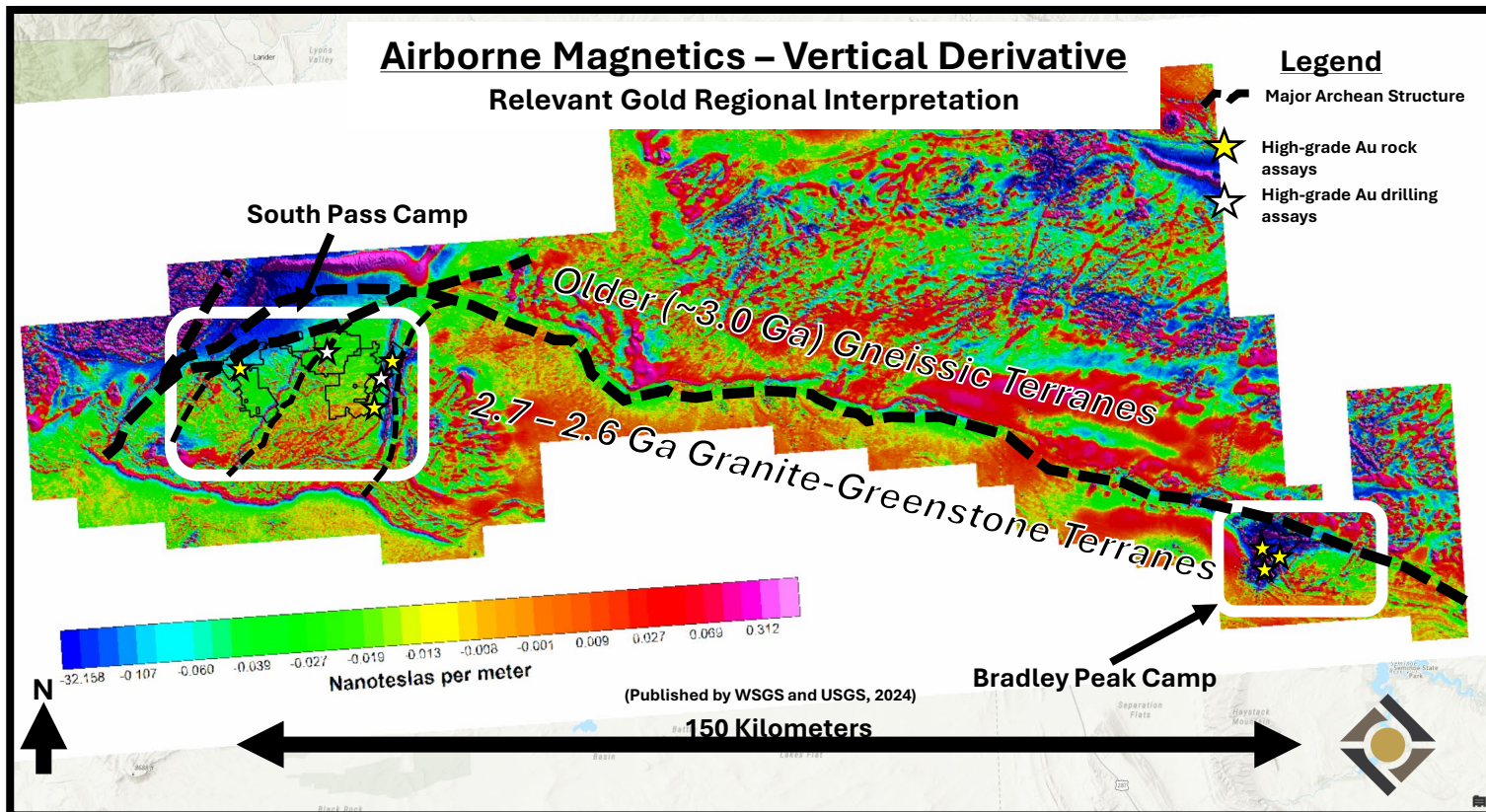
PORTFOLIO AT A GLANCE

2 GOLD CAMPS, 5 DISTRICT-SCALE PROJECTS,
17 HIGH-GRADE TARGETS



*Figure modified from Chamberlain et. al. 2006





In 2024 the Wyoming State Geological Survey released airborne magnetics survey data at no cost to RGC shareholders. Importantly, this data highlighted the connection of South Pass to Bradley Peak along a ~200+ km structural corridor. The survey also revealed a ~100 km² geophysical anomaly at Bradley Peak, coincident with our high-grade surface samples.





BELT-SCALE OPPORTUNITY

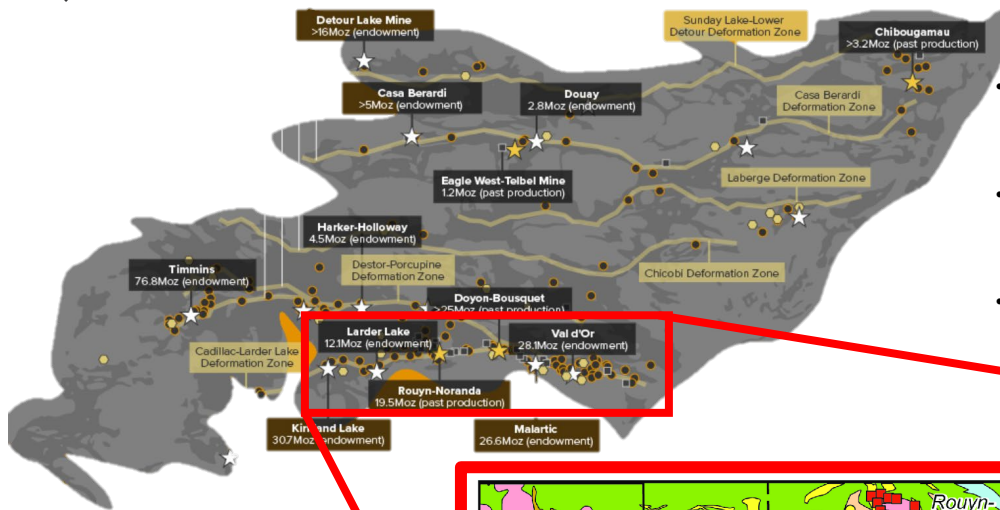


Figure Source: Modified from Visual Capitalist, Canada's Gold Exploration Frontier: The Abitibi Greenstone Belt, May 19, 2021

- New Wyoming magnetics survey confirms Archean structure comparable in size and scale to the Cadillac-Larder Lake Deformation Zone
- Gold mineralization commonly occurs in secondary structures within 7 km of the major structures in the Abitibi and Wyoming.
- *The magnetic data confirms we have some of the best discovery opportunities on Wyoming's main street!*

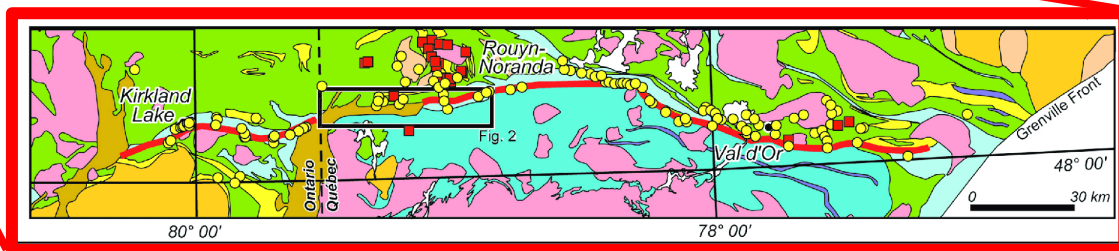


Figure Source: Rabeau et. al., 2011, Modified from Gold Potential of a Hidden Archean Fault Zone: The Case of the Cadillac-Larder Lake Fault, VL - 19, DO - 10.2113/gsmg.19.3-4.99, JO - Exploration and Mining Geology ER





PORTFOLIO SUMMARY

BRADLEY PEAK CAMP

SIZE / SCALE

10,800 ACRES

Mix of BLM and state lease claims located in the Seminoe Mountains in central Wyoming

OPPORTUNITY

6 TARGETS

Apex, Kortez, Deserted Treasure, Lost Mine, Olmeh, East Limb

STRUCTURAL HIGHLIGHTS

>50 KM

of potentially mineralized shear zones identified

~100 km²

geophysical anomaly highlights secondary structures hosting high-grade mineralization.

SAMPLING HIGHLIGHTS

- **46.8 g/t Au, 7.8% Cu, 2% Zn** (RGC 2024 samples)
- **5.3 g/t Au, 107 g/t Ag, 6.25% Cu** (RGC 2023 samples)
- **72.4 g/t Au, 3.7% Cu** (RGC 2019 samples)
- **89 g/t Au, 5.8% Cu** (historic samples)

UPCOMING CATALYSTS:

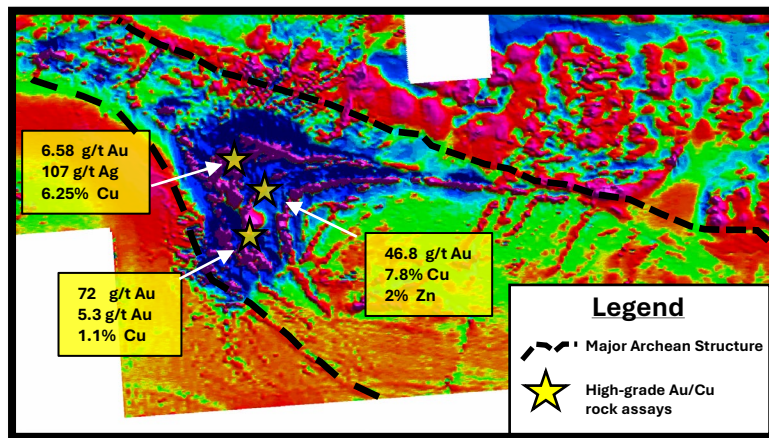
- **5,000+ m drill program** will provide the first test of subsurface mineralization at our exciting Apex Target where 2024 surface samples returned **46.8 g/t Au, 7.8% Cu, and 2% Zn**.



BRADLEY PEAK GOLD CAMP

	Criteria	Description
✓	Structural Setting	<ul style="list-style-type: none"> Major shear zones Brittle-ductile transition Complex re-folded folds Rheologic contrasts
✓	Host Rock	<ul style="list-style-type: none"> Amphibolites & greenstones Carbonate facies Iron Formation Mafic and felsic intrusives Komatiites
✓	Alteration	<ul style="list-style-type: none"> Chlorite, Carbonate, Sericite, Epidote, Sulfidation & Silica
✓	Geochemistry	<ul style="list-style-type: none"> Au, Ag, As, Bi, Cu, Sb, Pb & Zn
✓	Mineralization	<ul style="list-style-type: none"> Orogenic and intrusion-related gold mineralization systems Confirmed sulfide assemblage related to mineralization
✓	Land Position	<ul style="list-style-type: none"> 100% RGC ownership of 281 contiguous unpatented active BLM claims Rural sub-mountainous terrane ~50 miles from well established town and infrastructure
✓	Scalable Opportunity	<ul style="list-style-type: none"> Multiple district-scale targets RGC controls 98% of the entire greenstone belt camp
✓	Permitting	<ul style="list-style-type: none"> Streamlined State +/- Federal permitting pathway

Magnetic Survey – Vertical Derivative at Bradley Peak Camp

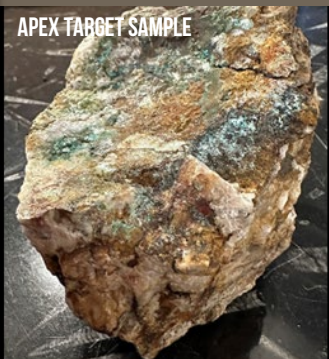


BRADLEY PEAK HIGHLIGHTS

BRADLEY PEAK GOLD CAMP

PROJECT OVERVIEW

APEX TARGET SAMPLE

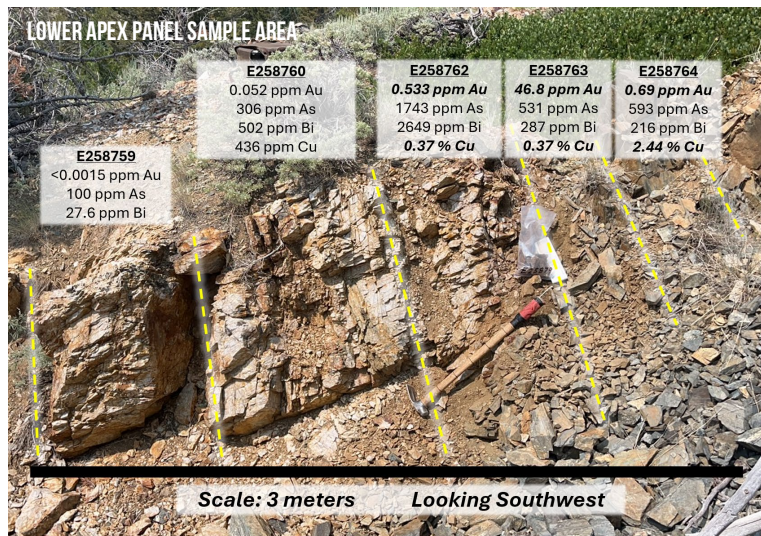


DESERTED TREASURE TARGET SAMPLE



- **10,800** acres (4,391 ha) footprint
- **6** high-grade targets identified in **3** district-scale target zones
 - Kortés, Apex, and Deserted Treasure
- **46.8 g/t Au, 7.8% Cu, 2% Zn** (RGC rock chip sample)
- **89 g/t Au, 5.8% Cu** (historic rock chip sample)
- 2023 airborne geophysics depicts a massive 100+ km² fold hinge anomaly
- **>2.5 km trend** of mineralized structure at Apex
- **50+ km** of new shear zones mapped
- Drill targets defined at Apex

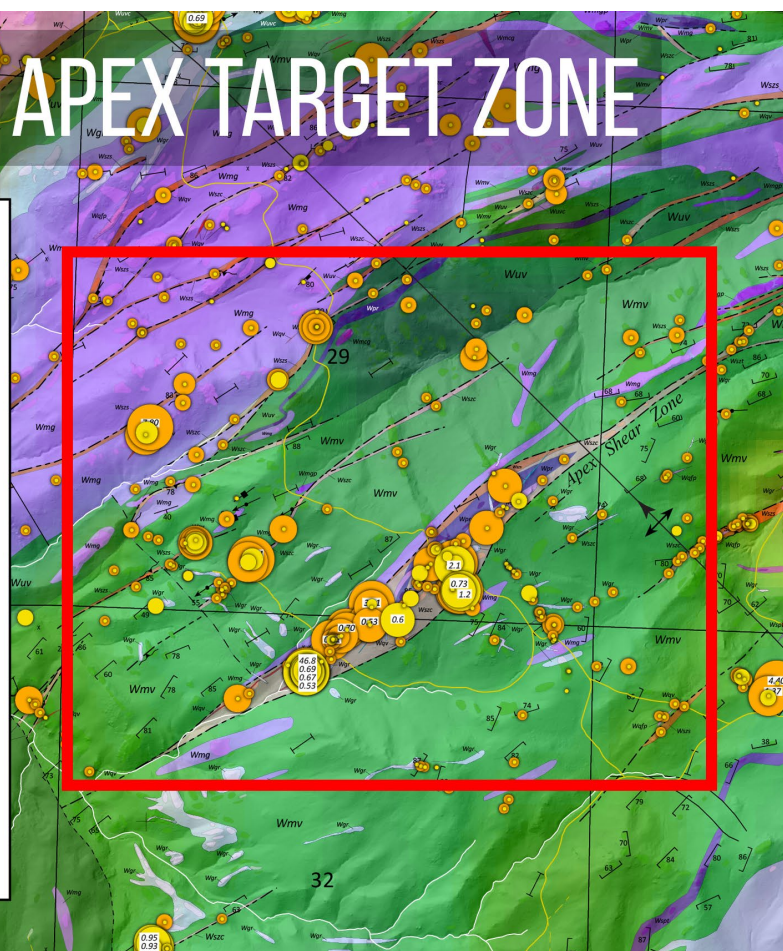
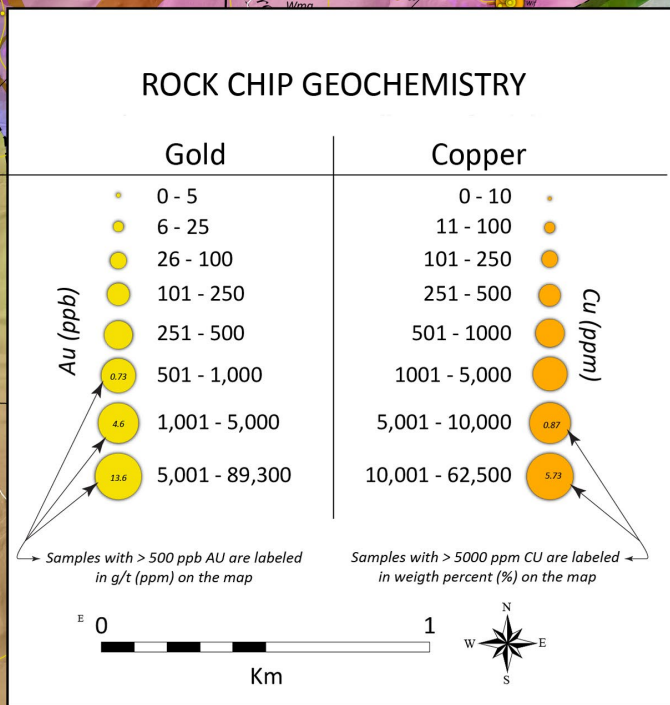
LOWER APEX PANEL SAMPLE AREA



“The high-grade gold, silver, and copper targets we have identified at Bradley Peak show significant potential, and the geophysical data indicates this is an opportunity of scale. These new acquisitions secure additional prospective ground and create a buffer around our highest-priority targets as we focus on expediting drill permitting.”

– Rob Bergmann, CEO

BRADLEY PEAK | APEX TARGET ZONE





PORTFOLIO SUMMARY

SOUTH PASS CAMP

SIZE / SCALE

OPPORTUNITY

SAMPLING HIGHLIGHTS

DRILLING HIGHLIGHTS



~32,000 ACRES

Mix of BLM, state lease claims, and patented / private ground located near the Wind River Mountains in west-central Wyoming

4 PROJECTS, 11 TARGETS

Golden Buffalo, Lewiston, Shield Carissa, Windy Flats

- **160 g/t Au** (Golden Buffalo)
- **62 g/t Au, 8.1% Cu** (Lewiston)
- **18.9 g/t Au, 486 g/t Ag** (Shield-Carissa)
- **20 m trench** produced **500 oz Au** (Golden Buffalo)

Golden Buffalo (2022):

- **3,500 m** program
- Top intercept: **83.8 g/t Au** over 1 m
- **54%** of holes intersected gold mineralization

Lewiston (2023, 2024):

- **~3,200 m** (two programs)
- **16 of 17** holes intersected gold mineralization
- Top intercepts: **2.2 g/t Au** over 1.5 m, **0.35 g/t Au** over 10 m, **0.13 g/t Au** over 23 m

UPCOMING CATALYSTS:

- **Advanced Geophysics, Mapping, and Sampling** to support **drill target refinement** in preparation for future follow-up drill programs at Lewiston and Golden Buffalo.
- Geologic Mapping, sampling, and target identification work at Shield-Carissa, Windy Flats



GOLDEN BUFFALO HIGHLIGHTS

PROJECT OVERVIEW



Coarse Gold in Shear Zone Quartz Veins

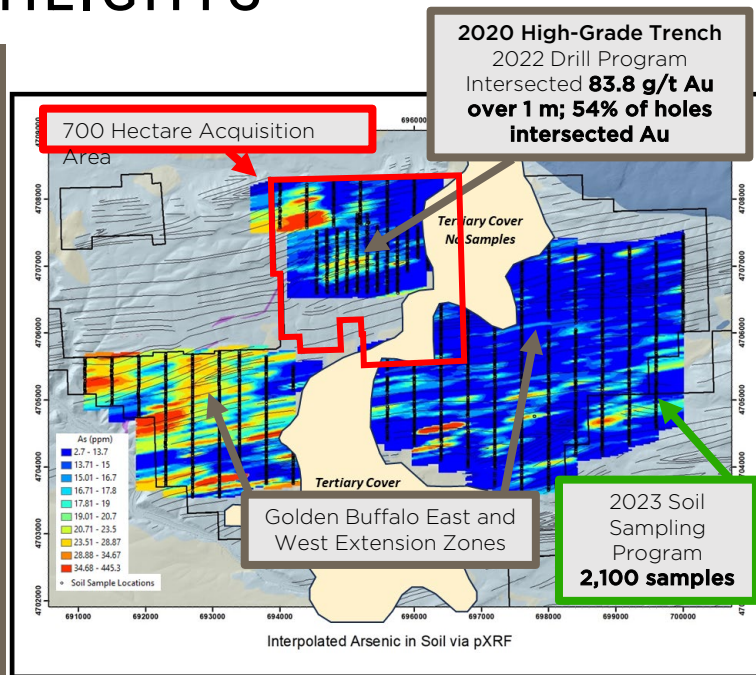


Gold Nuggets



Fine Gold Panned from Surface Materials

- **9,600** acres (3,884 ha) footprint
- **2** high-grade targets defined
- 2020 trench produced ~500 oz Au (pictured left)
- **2022 Drill Program:**
 - **3,500 m** drilled at Golden Buffalo target
 - Cut gold in **54%** holes
 - Top interval: **83.8 g/t Au over 1 m**
- Golden Buffalo Shear Zone (GBSZ) extended to **> 2 km** of strike
- **160 g/t Au** (RGC rock chip sample)
- 2023 soil survey defined 3.5 km² geochemical anomaly GBSZ strike extension



2024 EXPLORATION HIGHLIGHTS

Map Units

- alluvial
- tephroclastic
- tephrostratigraphic
- tephrostratigraphic
- tephrostratigraphic

Map Symbols

- dike
- fault
- fault zone
- fault zone
- fault zone
- fault zone

Gold Geochemistry

- alluvial
- tephroclastic
- tephrostratigraphic
- tephrostratigraphic
- tephrostratigraphic

Scale

0 1000 meters

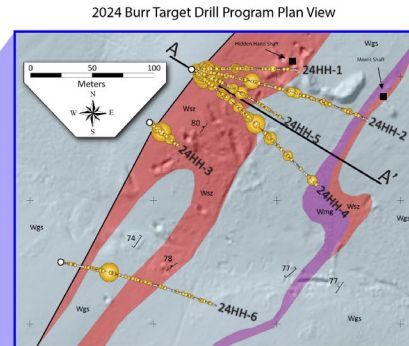


Figure 10 is a scatter plot showing the distribution of AU (ppb) versus Depth (meters) and Horizontal Distance (meters). The plot is divided into regions labeled 'W1' and 'W2'. A dashed line labeled '200m' and a solid line labeled '200m-1' are shown. A view to the northeast at a 221° line of section is indicated. The legend shows AU (ppb) ranges: <15, 15-50, 51-100, 101-250, 251-500, 501-1000, and 1001-2183.



PROOF OF CONCEPT

Orogenic Gold Checklist; RGC district-scale exploration checks all the boxes

	CRITERIA	DESCRIPTION
✓	Structural Setting	<ul style="list-style-type: none">Major east-west Archean fault structures cutting across WYMineralized secondary shear zonesBrittle-ductile transitionRheologic contrastsComplex re-folded folds
✓	Host Rock	<ul style="list-style-type: none">Amphibolites & greenstonesGreywackesCarbonate facies iron formation
✓	Alteration	<ul style="list-style-type: none">Chlorite, Carbonate, Sericite, Epidote, Sulfidation, Silica
✓	Geochemistry	<ul style="list-style-type: none">Au, Ag, As, Bi, Cu, Sb, Pb, Zn
✓	High-Grade Mineralization	<ul style="list-style-type: none">Archean Orogenic gold style mineralization systemsHigh-grade and visible orogenic gold proven (168 g/t Au)
✓	Land Position	<ul style="list-style-type: none">5 district-scale assets across 150 km Archean beltBig enough to host the largest known orogenic type depositsWell established infrastructure, access, water, and power
✓	Scalable Opportunity	<ul style="list-style-type: none">Connection to Abitibi during gold mineralization (2.65 ba)Multiple high-grade targets with Abitibi-scale potential
✓	Permitting	<ul style="list-style-type: none">Streamlined State and Federal permitting pathwayMultiple exploration permits in handWyoming has deep roots in mining and natural resources



*2020 Trench sample collected by Golden Buffalo Mining Company assaying 168 g/t Au





2025 ANTICIPATED CATALYSTS

EXPLORATION GOALS



PERMITTING

- Finalize permit application for 2025 exploration drilling at Bradley Peak (Apex target)
- Advance the permitting efforts at additional targets
- Reclamation at past drilling sites to recoup cash bond.
- Consider additional permitting needs for phase 2 drilling at Lewiston and Golden Buffalo
- Permit trenching at Golden Buffalo



EXPLORATION DRILLING

- Phase 1 drill program at Bradley Peak (Apex target)
- Phase 1 - 5,000 m diamond core drill program planned
 - Program will test the subsurface structure and mineralization at Apex, where 2024 surface samples returned **46.8 g/t Au, 7.8% Cu, and 2% Zn** from a 2.5 km structural zone centered in a 100 km² geophysical anomaly.
 - Phase 2 drill planning and design at Lewiston and Golden Buffalo



ADVANCED GEOPHYSICS

- Leveling and 3-D inversions of regional magnetics data
- Conduct Airborne VTEM surveys at Bradley Peak and IP/MT surveys at South Pass to refine our understanding of the systems at depth



MAPPING & SAMPLING

- 2024 Windy Flats soil sampling program collected 1,500 samples across an ~18 km² area; samples will be processed and assayed in 2025
- Detailed mapping and sampling planned for new ground at Bradley Peak.
- Mapping and sampling follow-up at Windy Flats as needed.





WHY INVEST?

27

TIGHTLY HELD STRUCTURE:

~103M shares
outstanding

Major shareholders:
Management, Kinross
Gold, Mr. Bill Bollinger,
Mr. Rob McEwen

UPSIDE MULTIPLIER:

A belt-scale concept
with a pipeline of
discovery
opportunities

FIRST MOVER ADVANTAGE:

50k-acre land
package with 5
district-scale projects
in mining-friendly
Wyoming

GRADE IS KING:

Proven high-grade
orogenic gold at
surface and at depth

STRONG MARKET POSITION:

A unique discovery
opportunity with
many near-term
catalysts and recent
successes

HUMAN CAPITAL INFRASTRUCTURE:

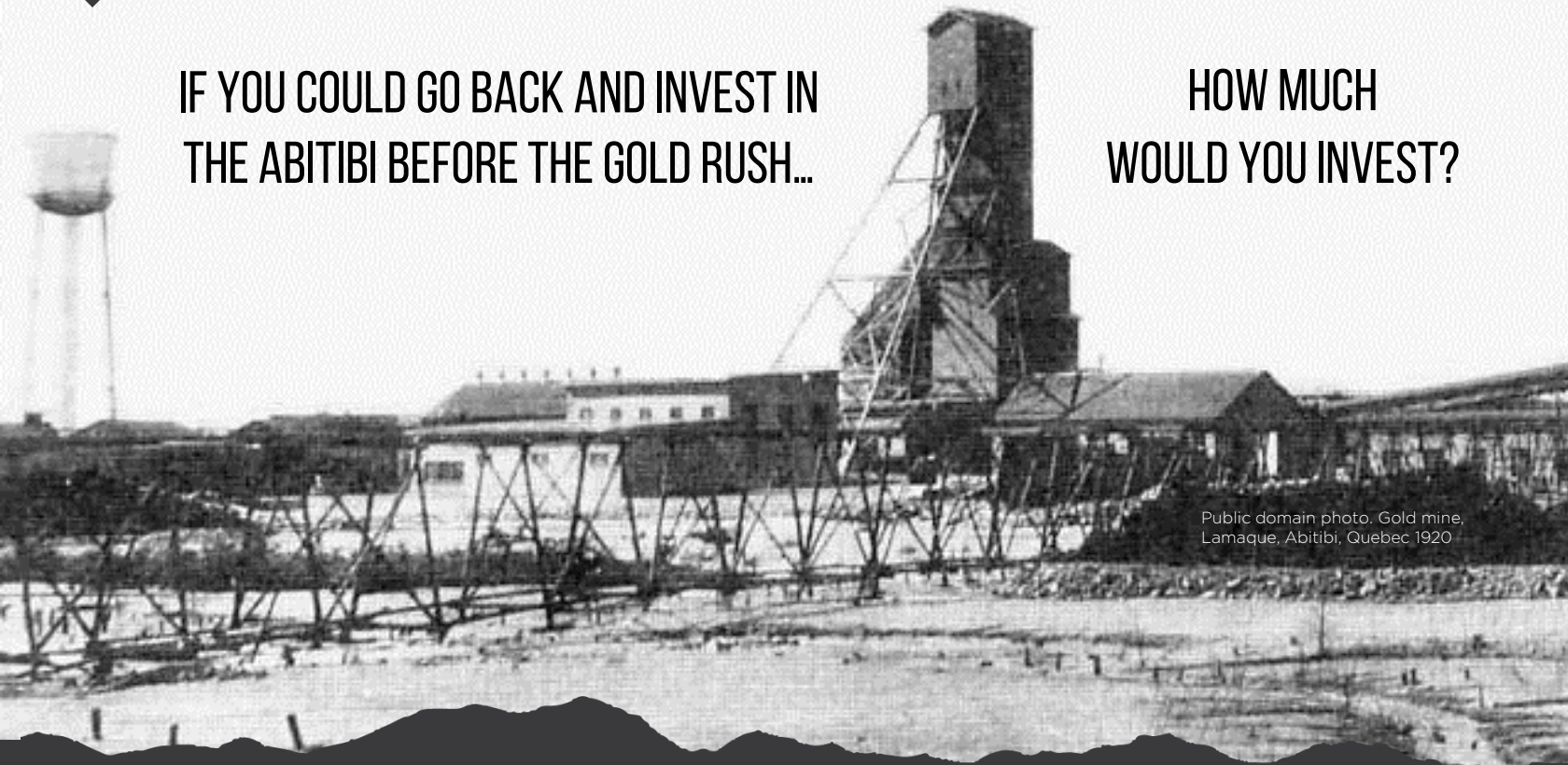
Proven execution
team and a unique
toolkit for turnkey
exploration support
with Big Rock





IF YOU COULD GO BACK AND INVEST IN
THE ABITIBI BEFORE THE GOLD RUSH...

HOW MUCH
WOULD YOU INVEST?



Public domain photo. Gold mine,
Lamaque, Abitibi, Quebec 1920





RELEVANT GOLD TSXV:RGC | OTCQB:RGCCF

Gold Newsletter

“For those who want to invest in belt-scale gold potential in a rising gold environment, **now is a good time to begin accumulating Relevant Gold.**”

April 2024

RELEVANT GOLD TSXV:RGC | OTCQB:RGCCF

Gold Newsletter

“Now imagine if you could buy a ticket on the potential to **discover the next Abitibi** – virtually the entire belt – in the mining-friendly jurisdiction of **Wyoming**. That’s exactly the potential that Relevant Gold is offering investors.”

April 2024

RELEVANT GOLD TSXV:RGC | OTCQB:RGCCF

Gold Newsletter

“It’s a big target, one that will take a while to test, but these **early sample grades show the promise here**. The drilling at Bradley Peak won’t begin until 2025, but if you like the possibility that Relevant will find Abitibi-style gold either here or at Lewiston, you’ll want to build a position soon. **Relevant Gold’s a buy.**”

October 2024





BUILDING AN EXPLORATION STORY TO LIVE ON FOR CENTURIES



FOUR REASONS TO INVEST:

1 HIGH-GRADE

Gold + silver + copper + zinc opportunity with strategic investment by Kinross Gold.



LEARN MORE

2 BELT-SCALE

Science-backed connection to Abitibi unlocks multi-million-ounce potential for gold, silver, and base metals.

3 PIPELINE

17 high-grade targets across 5 projects in mining friendly Wyoming creates a pipeline of discovery opportunity.

4 TEAM

Led by a group of that has created \$Billions in shareholder value and is credited with multiple multi-Moz gold and silver discoveries.



RELEVANT GOLD | CORPORATE PRESENTATION

RELEVANT GOLD

TSXV:RGC | OTCQB:RGCCF



JOIN US FOR THE NEXT BIG DISCOVERY

WWW.RELEVANTGOLDCORP.COM

@RELEVANTGOLDCORP



FOR QUESTIONS & INFORMATION, PLEASE CONTACT:

investorrelations@relevantgoldcorp.com

+1-763-760-4886

RELEVANT GOLD

TSXV:RGC | OTCQB:RGCCF