



**RELEVANT**

**GOLD**

**TSXV:RGC**  
**OTCQB:RGCCF**

**DEFINING A NEW MEGA-DISTRICT IN WYOMING WITH ABITIBI-SCALE POTENTIAL**





# CAUTIONARY STATEMENT

This presentation contains certain statements that constitute forward looking information within the meaning of applicable securities laws. These statements relate to future events of Relevant Gold Corp. (“Relevant” or “the Company”). Any statements that express or involve discussions with respect to predictions, expectations, beliefs, plans, projections, objectives, assumptions or future events or performance (often, but not always, using words or phrases such as “seek”, “anticipate”, “plan”, “continue”, “estimate”, “expect”, “forecast”, “may”, “will”, “project”, “predict”, “potential”, “targeting”, “intend”, “could”, “might”, “should”, “believe”, “outlook” and similar expressions) are not statements of historical fact and may be forward looking information. Forward looking information in this presentation includes, but is not limited to, statements with respect to successfully consolidating further land packages, Relevant’s ability to raise sufficient capital to fund exploration programs and its obligations under property agreements, seek a listing on a recognized stock exchange, drilling plans, financing success, discovery and production of minerals, metal prices and currency exchange rates, timing of technical reports and drill results, corporate and technical objectives, permitting success and relationships with stakeholders.

Forward looking information involves known and unknown risks, uncertainties and other factors which may cause the actual results, performance or achievements of the Company to be materially different from any future results, performance or achievements expressed or implied by the forward-looking information. Such risks include, among others, the inherent risk of the mining industry; adverse economic and market developments; the risk that the Company will not be successful in completing additional acquisitions; risks relating to the estimation of mineral resources; the possibility that the Company’s estimated burn rate may be higher than anticipated; risks of unexpected cost increases; risks of labour shortages; risks relating to exploration and development activities; risks relating to future prices of mineral resources; risks related to work site accidents, risks related to geological uncertainties and variations; risks related to government and community support of the company’s projects; risks related to global pandemics and other risks related to the mining industry. The Company believes that the expectations reflected in such forward-looking information are reasonable, but no assurance can be given that these expectations will prove to be correct and such forward-looking information should not be unduly relied upon. These statements speak only as of the date of this presentation. The Company does not intend, and does not assume any obligation, to update any forward-looking information except as required by law.

This document does not constitute an offer to sell, or a solicitation of an offer to buy, securities of the Company in Canada, the United States or any other jurisdiction. Any such offer to sell or solicitation of an offer to buy the securities described herein or during the presentation will be made only pursuant to subscription documentation between the Company and prospective purchasers. Any such offering will be made in reliance upon exemptions from the prospectus and registration requirements under applicable securities laws, pursuant to a subscription agreement to be entered into by the Company and prospective investors.

The scientific and technical contents of this presentation have been approved by Mr. Brian C. Lentz, CPG, Chief Exploration Officer of the Company, who is a “Qualified Person” as defined by Canadian National Instrument 43-101 (Standards of Disclosure for Mineral Projects). Mr. Lentz is not independent of the Company.





# STRONG VALUE PROPOSITION

- ✓ **PROVEN TEAM OF VALUE CREATORS WITH DEEP HUMAN CAPITAL INFRASTRUCTURE**
- ✓ **UNLOCKING A POTENTIAL MEGA-DISTRICT; ABITIBI-LIKE POTENTIAL**
- ✓ **VERY LARGE LAND POSITION; MULTIPLE PERMITTED DRILL TARGETS**
- ✓ **HIGH-GRADE GOLD AT SURFACE; ASSAYS UP TO 168 g/t Au**
- ✓ **HIGH-GRADE GOLD AT DEPTH; DRILLED 83.8 g/t Au OVER 1 M AT GOLDEN BUFFALO**
- ✓ **1,560 M LEWISTON DRILL PROGRAM CUT GOLD IN 10 OF 11 HOLES**
- ✓ **50+ KM OF PROSPECTIVE ABITIBI-STYLE SHEAR ZONES ACROSS 5 PROJECTS**
- ✓ **PIPELINE OF DISCOVERY OPPORTUNITIES IN MINING-FRIENDLY WYOMING**
- ✓ **BUILDING AN EXPLORATION STORY TO LIVE ON FOR CENTURIES**

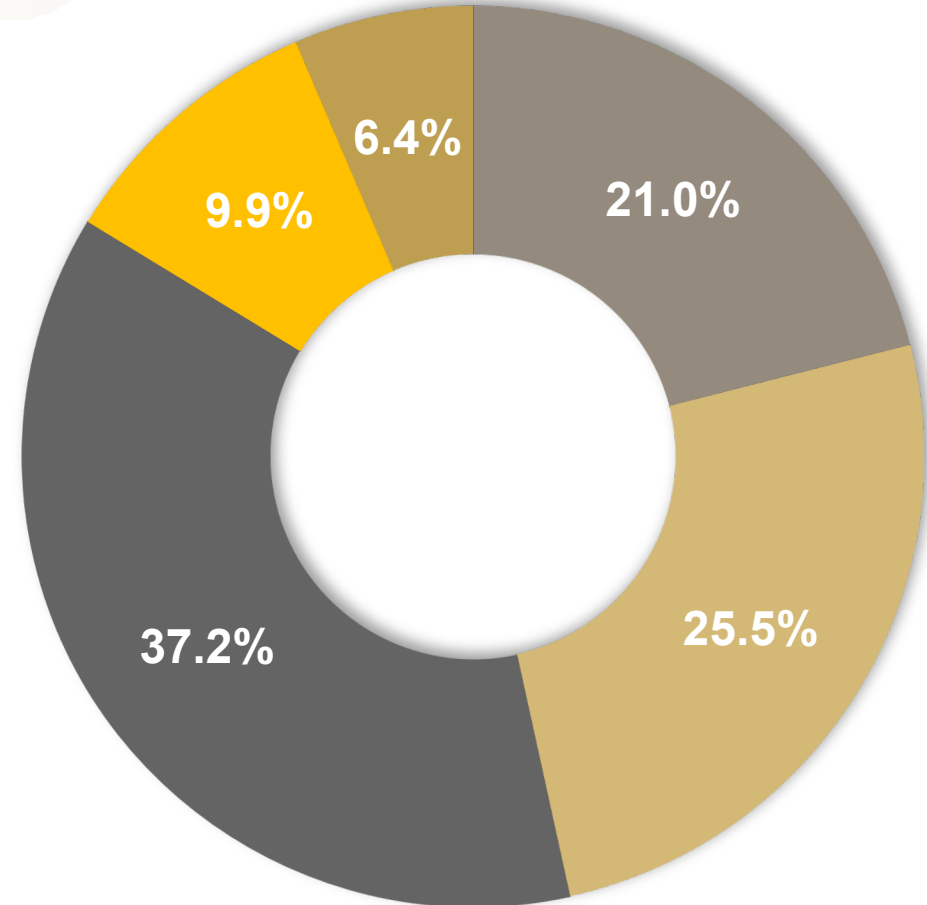




# CORPORATE STRUCTURE

## MAJOR SHAREHOLDERS: (as of 9/1/2023)

- Management and Insiders
- New Gold
- Rob McEwen
- Ultra High Net Worth Individuals
- Retail



## SHARE BREAKDOWN:

Issued and Outstanding: 63,791,226  
 Reserved for Issuance: 21,896,240\*

\* Includes:

Founders' Warrants:	12,000,000 @ \$0.13	expire 2025	\$1,560,000
Management/Board Options:	3,750,000 @ \$0.35	expire 2027	\$1,312,500
General Warrants:	6,146,240 @ \$0.35	expire 2026	\$2,151,184

# RELEVANT GOLD

TSXV:RGC | OTCQB:RGCCF



# MEET THE TEAM

BOARD OF DIRECTORS



INDEPENDENT DIRECTOR

**Dr. Peter Megaw, PhD.**

40+ Years Experience  
PhD., Economic Geology

Cofounder, MAG Silver Corp.



INDEPENDENT DIRECTOR

**Sarah Weber**

20+ Years Experience  
P. Geo / MBA

CEO, C3 Alliance Corp.

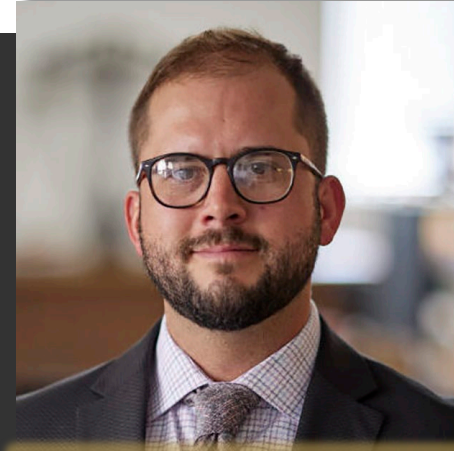


INDEPENDENT DIRECTOR

**Ronald L. Parratt**

40+ Years Experience  
M.Sc. Economic Geology

Cofounder, Auex Ventures, Inc.



DIRECTOR, CEO

**Rob Bergmann**

15+ Years Experience  
B.Sc. Geology

Founder, Relevant Gold Corp.



DIRECTOR, CXO

**Brian Lentz**

15+ Years Experience  
B.Sc. Geology / P. Geo

Founder, Relevant Gold Corp.

MANAGEMENT



**Mahesh Liyanage**  
RGC CFO



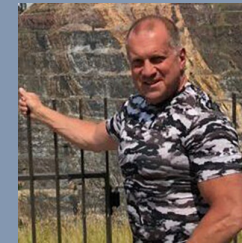
**Sam Siebenaler**  
VP Corporate Dev.



**Kristopher Jensen**  
Corporate Comms. Mgr.



**Dr. Dean Peterson, PhD**  
Technical Advisor



**Dr. Thomas Campbell, PhD**  
Technical Advisor



**Dr. Kevin Chamberlain, PhD**  
Technical Advisor

FULL BIOS CAN BE FOUND AT [RELEVANTGOLDCORP.COM](http://RELEVANTGOLDCORP.COM)

**RELEVANT GOLD**  
TSXV:RGC | OTCQB:RGCCF



# TARGET: OROGENIC GOLD = 1 BILLION OUNCES

## HOW OROGENIC GOLD IS FORMED

Orogenic gold deposits account for about 1/3 of the world's gold production. Here is how they formed:

1

**SOURCE:** Metal enriched source fluid deep in the earth's subsurface

2

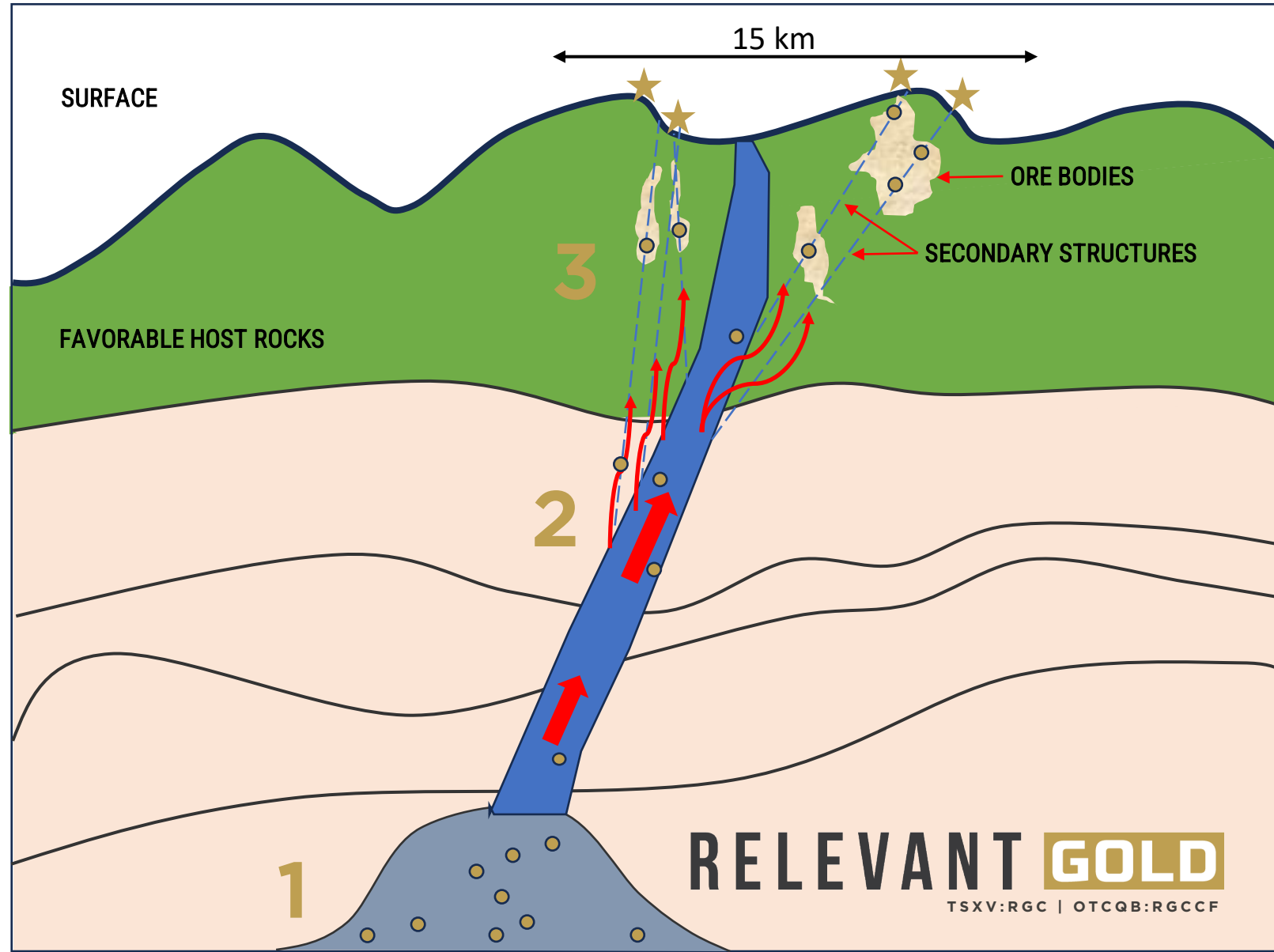
**PATHWAY:** Major, deep rooted fault structures formed, creating pathways that allowed these gold enriched fluids to rise

3

**TRAP:** Gold-bearing fluids become trapped in secondary structures of favorable host rocks, allowing the gold to precipitate out.

98%

of all the orogenic gold produced in the Timmins, Kirkland Lake, and Hemlo camps in the Abitibi (106.25 M oz) was found in secondary structures within 7 km of the primary fault structure (i.e. Destor Porcupine Fault).<sup>2</sup>



**RELEVANT GOLD**

TSXV:RGC | OTCQB:RGCCF

1. Frimmel, H. E. Earth's continental crustal gold endowment. *Earth Planet. Sci. Lett.* 267, 45-55 (2008)

2. Peterson, Dean. Ph.D. Dissertation, 2001



# OPPORTUNITY OF SCALE

The Abitibi Gold Belts; Prolific Orogenic Shear Zone Hosted Gold Deposits, > 200 Moz

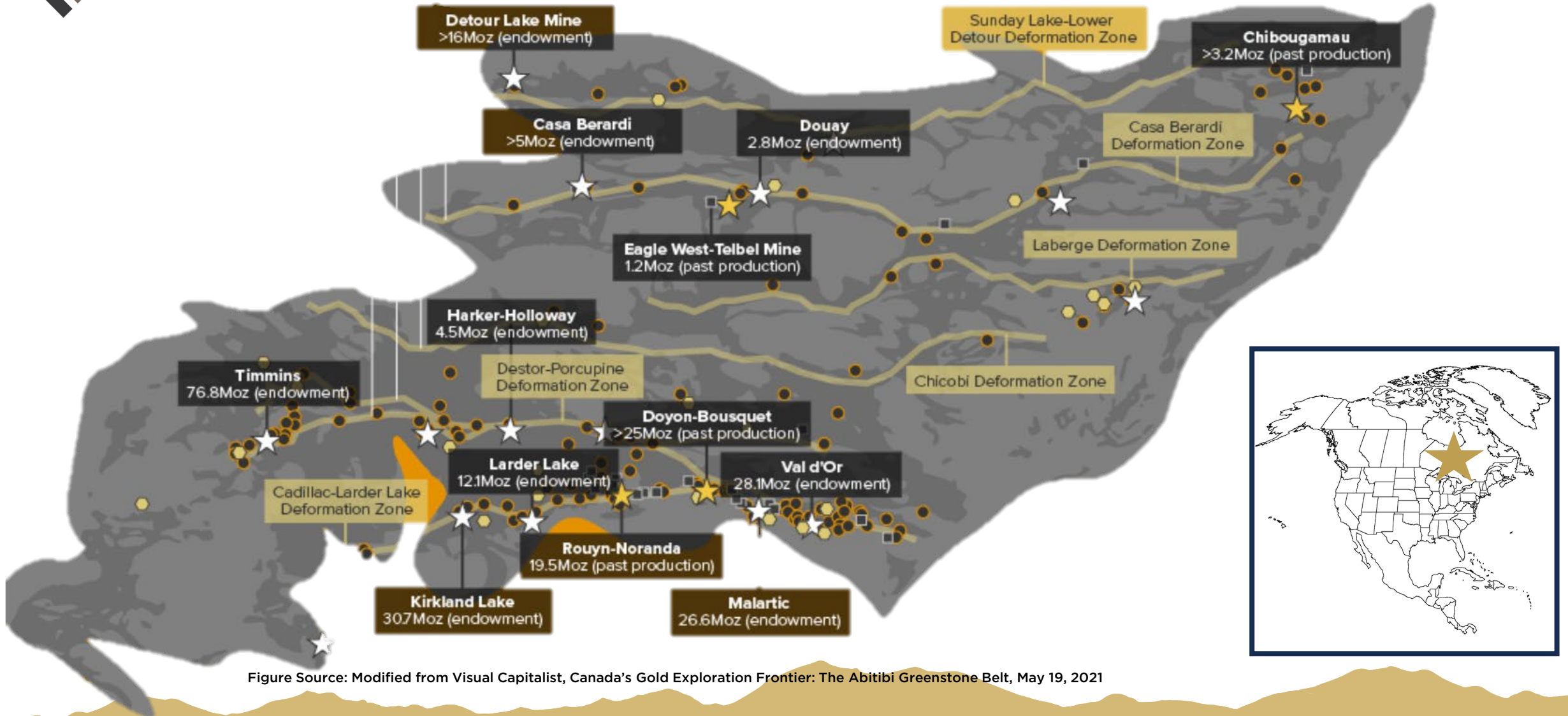
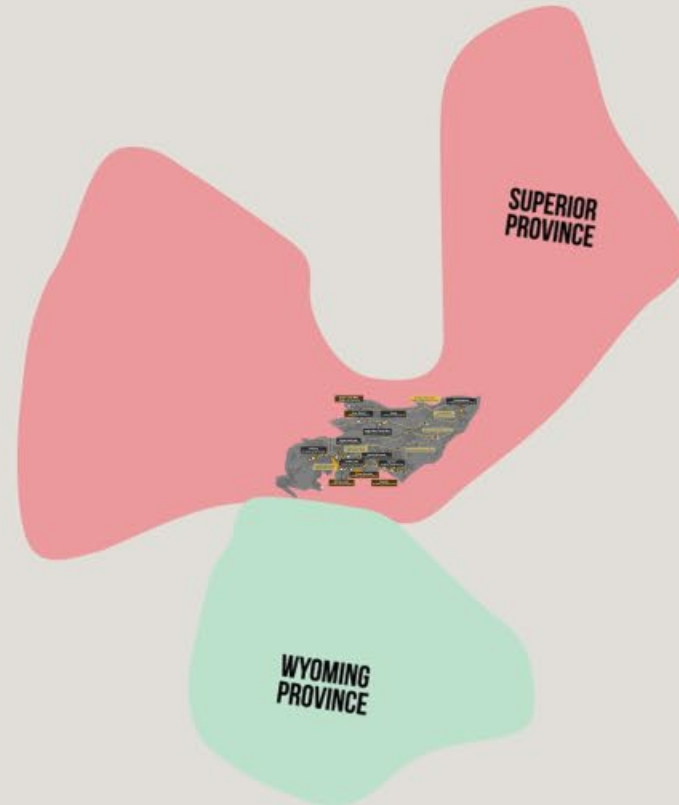


Figure Source: Modified from Visual Capitalist, Canada's Gold Exploration Frontier: The Abitibi Greenstone Belt, May 19, 2021



TSXV:RGC  
OTCQB:RGCCF



**Wyoming and Abitibi Were Connected When Gold Formed  
~2.7 – 2.6 Billion Years Ago**



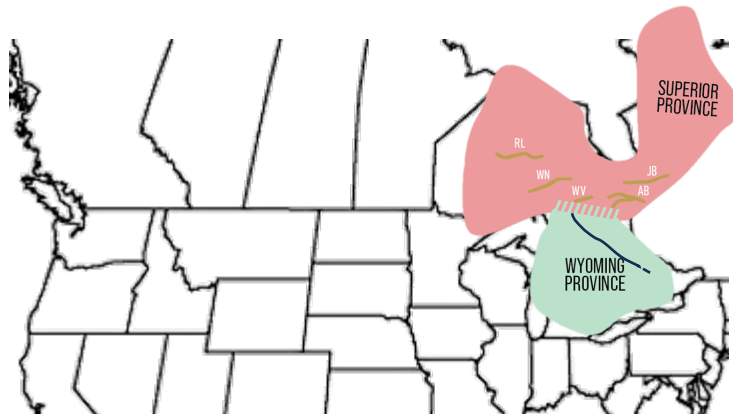


# ABITIBI THESIS

SCAN FOR ANIMATION

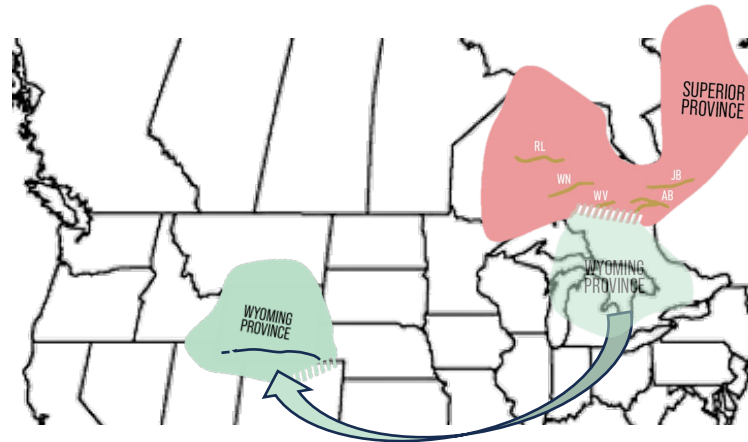


~2.65 BILLION YEARS AGO



The Wyoming Province and the Superior Province (Abitibi) were connected when gold mineralization occurred. (Chamberlain et. al. 2006)

~2.1 BILLION YEARS AGO



Continental rifting caused the Wyoming Province to begin to separate, rotate, and move to its current location over many millions of years.

MODERN DAY



Relevant Gold applied these insights to secure the most prospective ground in Wyoming and is pursuing the next great orogenic gold discovery.





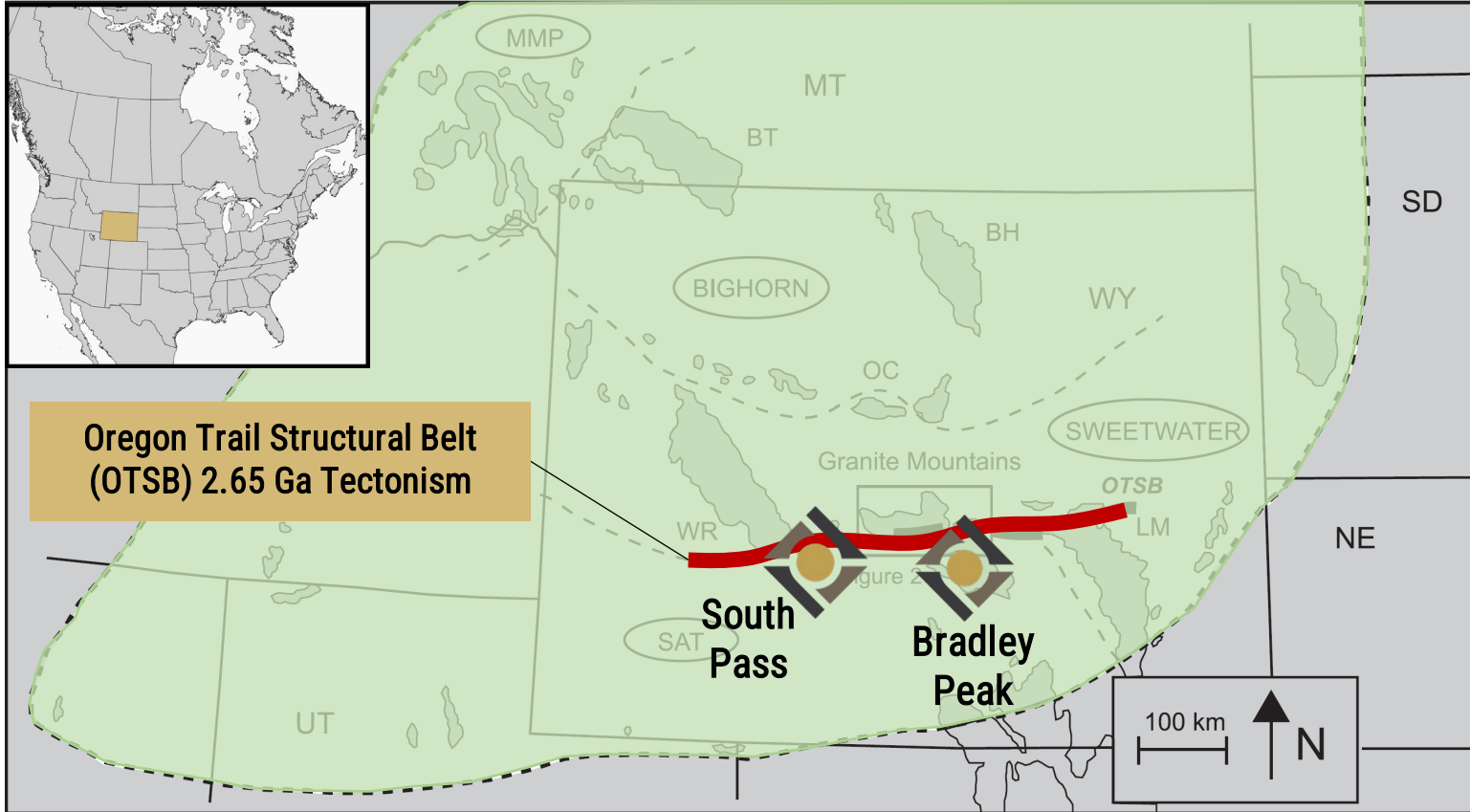
# WYOMING

THE UNEXPLORED ABITIBI GOLD BELT

**RELEVANT GOLD**  
TSXV:RGC | OTCQB:RGCCF



# RELEVANT GOLD CAMPS | NEW ABITIBI



\*Figure modified from Chamberlain et. al. 2006

## TECHNICAL SUMMARY

- ◆ Craton scale structural zone
- ◆ Same age and orientation as belts in Superior Province
  - ◆ Destor Porcupine, Cadillac & Larder Lake
- ◆ Cross-cutting rock types known to host Orogenic and VMS style mineralization
- ◆ Historic gold mines throughout the OTSB across the Wyoming Province





# CAMP-SCALE OPPORTUNITY

The South Pass Gold Camp is comparable in size to the Canadian Malartic area in the Abitibi Gold Belts

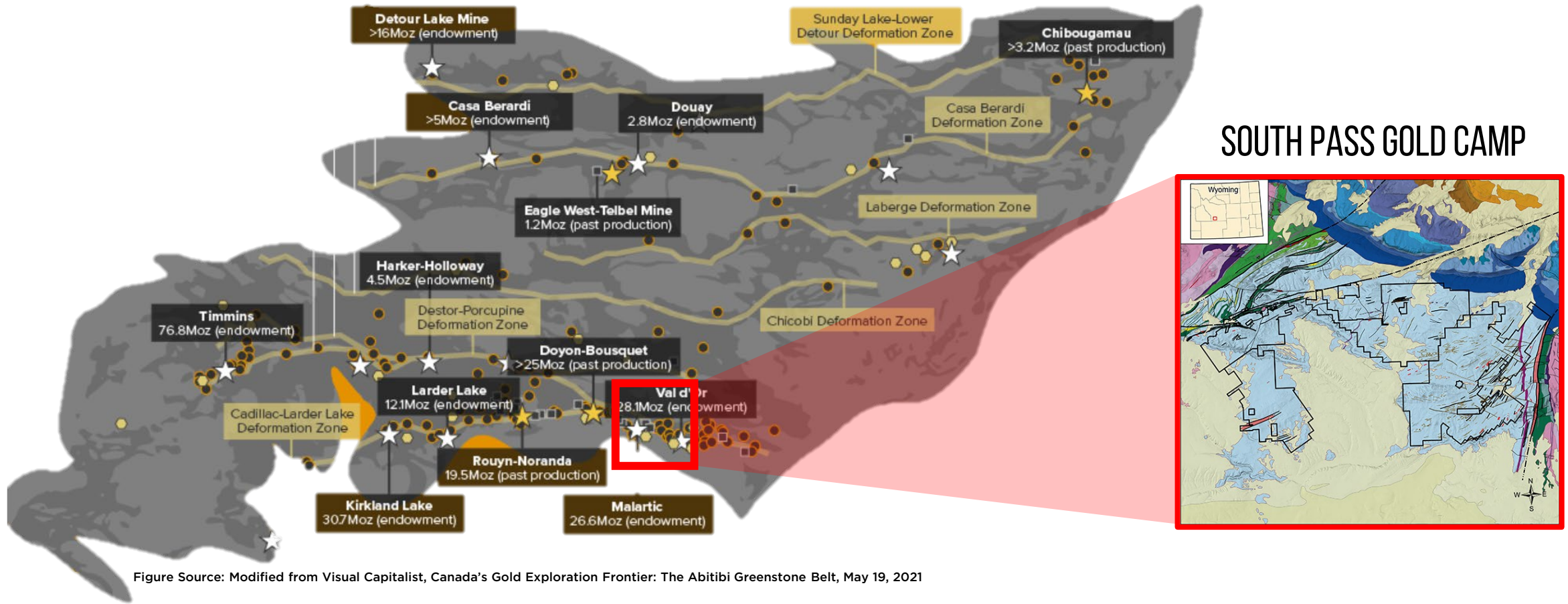


Figure Source: Modified from Visual Capitalist, Canada's Gold Exploration Frontier: The Abitibi Greenstone Belt, May 19, 2021



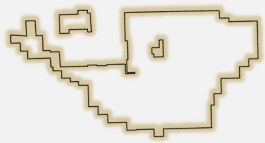
# PORTFOLIO AT A GLANCE

2 gold camps, 5 district-scale projects

## SOUTH PASS CAMP

## BRADLEY PEAK CAMP

### 🚩 GOLDEN BUFFALO

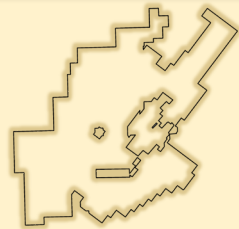


9,600 acres (3,884 hectares) of BLM claims

Highlights:

- **~3,500m** drill program in 2022
- **54%** of holes returned anomalous gold
- Top intercept: **83.8 g/t Au** over 1 m
- Rock chip assays up to **160 g/t Au** from trench
- Abundant coarse visible gold
- GBSZ extended to **~2km strike**

### 🚩 LEWISTON



14,000 acres (5,665 hectares) of BLM claims including 58 acres of patented claims at Hidden Hand

Highlights:

- **1,560 m** drill program (2023) cut gold in 10 of 11 holes
- **1,690 oz/ton Au** (historic sample)
- **62 g/t Au, 8.1% Cu** (RGC sample)
- **> 10 km** of potentially mineralized shear zones
- Strong arsenic correlation
- 6 district-scale targets defined

### SHIELD-CARISSA



>2,000 acres (800 hectares) of BLM claims, including historic **B&H** and **Shields** mines. Adjacent to the historic Carissa Mine

Highlights:

- **4.6 g/t Au** rock chip sample (RGC)
- **18.9 g/t Au** and **486 g/t Ag** (RGC 2023 samples)
- **> 3 km** potentially mineralized shear zone
- Estimated historic gold production at adjacent Carissa Mine: **200,000 oz Au**

### WINDY FLATS



6,200 acres (2,500 hectares) of BLM claims

Highlights:

- Greenfields project with large unexplored zone of shearing recently exposed because of the wind
- Same stratigraphy found elsewhere in the South Pass Formation

### BRADLEY PEAK



5,700 acres (2,306 hectares) of BLM claims located in the Seminole Mountains in central Wyoming

Highlights:

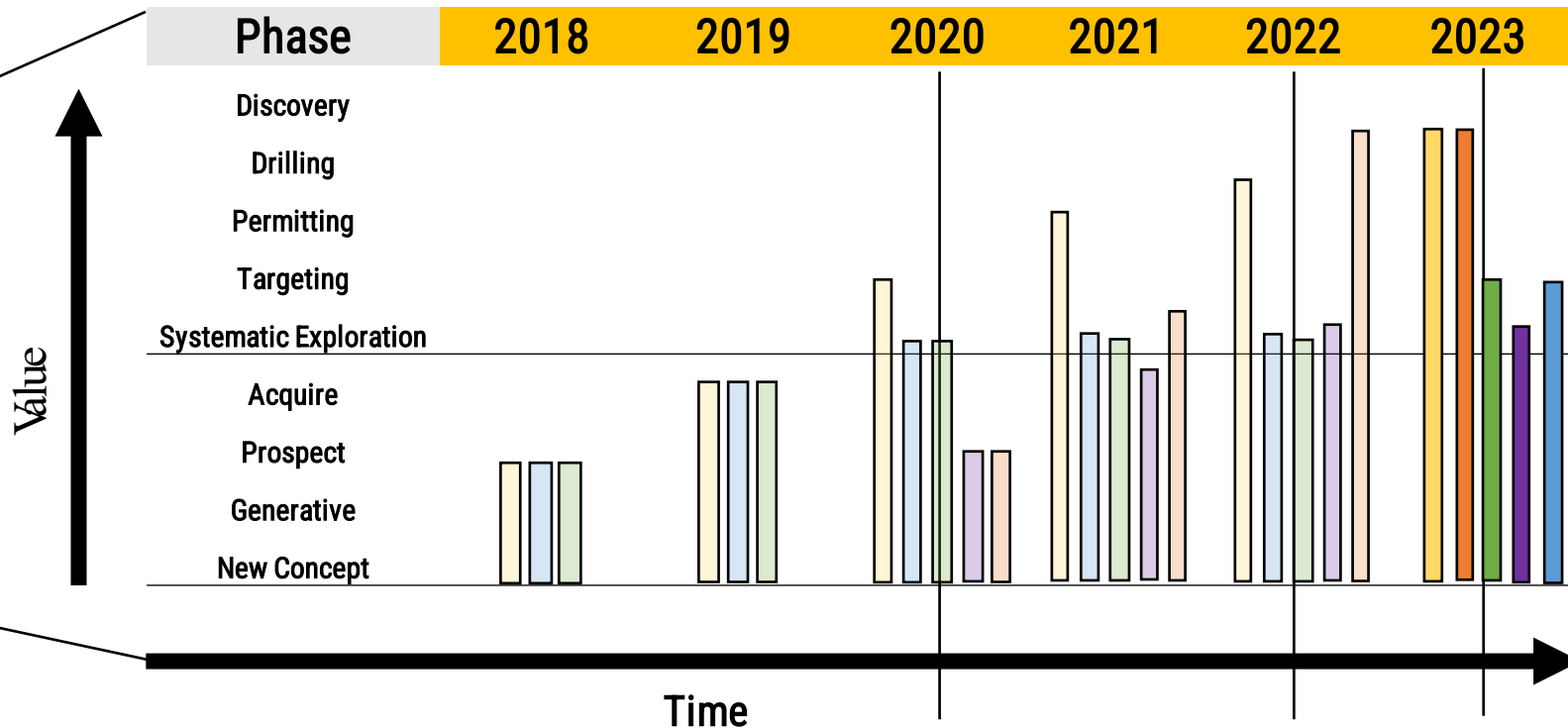
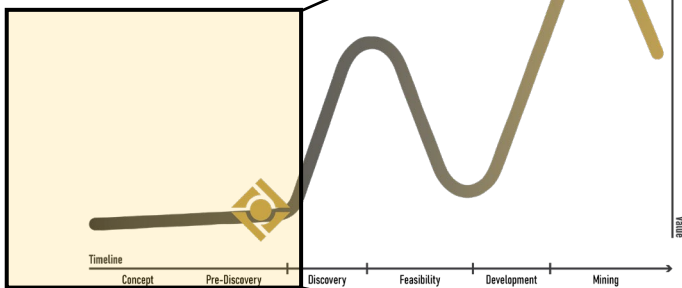
- **89 g/t Au, 5.8% Cu** (historic samples)
- **6.5 g/t Au, 3.7% Cu** (RGC historic sample)
- **5.3 g/t Au, 107 g/t Ag**, and **6.25% Cu** (RGC 2023 samples)
- **>21 km** of potentially mineralized shear zones
- Identified **3 distinct target zones** (Kortes, Apex, and Deserted Treasure)





# APPROACH | SYSTEMATIC EXPLORATION

The Lasonde Curve  
Pre-Discovery



**OPPORTUNITY KEY**

- Golden Buffalo
- Lewiston
- Shield-Carissa
- Windy Flats
- Bradley Peak

Relevant Gold Corp. is formed

Public listing on CSE

Public listing on TSXV

**RELEVANT GOLD**

TSXV:RGC | OTCQB:RGCCF



# PROOF OF CONCEPT

Orogenic Gold Checklist; RGC district-scale exploration checks all the boxes

	CRITERIA	DESCRIPTION
✓	Structural Setting	<ul style="list-style-type: none"> <li>• Major east-west Archean fault structures cutting across WY</li> <li>• Mineralized secondary shear zones</li> <li>• Brittle-ductile transition</li> <li>• Complex re-folded folds</li> <li>• Rheologic contrasts</li> </ul>
✓	Host Rock	<ul style="list-style-type: none"> <li>• Amphibolites &amp; greenstones</li> <li>• Greywackes</li> <li>• Carbonate facies iron formation</li> </ul>
✓	Alteration	<ul style="list-style-type: none"> <li>• Chlorite, Carbonate, Sericite, Epidote, Sulfidation, Silica</li> </ul>
✓	Geochemistry	<ul style="list-style-type: none"> <li>• Au, Ag, As, Bi, Cu, Sb, Pb, Zn</li> </ul>
✓	Mineralization	<ul style="list-style-type: none"> <li>• Orogenic gold + intrusion style mineralization styles</li> <li>• High-grade and visible orogenic gold proven (168 g/t Au)</li> <li>• Orogenic sulfide minerals; arsenopyrite, pyrrhotite, &amp; pyrite</li> </ul>
✓	Land Position	<ul style="list-style-type: none"> <li>• 5 district-scale assets across 150 km Archean belt</li> <li>• Big enough to host the largest known orogenic type deposits</li> <li>• Well established infrastructure, access, water, and power</li> </ul>
✓	Scalable Opportunity	<ul style="list-style-type: none"> <li>• Connection to Abitibi during gold mineralization (2.65 ba)</li> <li>• Multiple high-grade targets with Abitibi-scale potential</li> </ul>
✓	Permitting	<ul style="list-style-type: none"> <li>• Streamlined State and Federal permitting pathway</li> <li>• Multiple exploration permits in hand</li> <li>• Wyoming has deep roots in mining and natural resources</li> </ul>



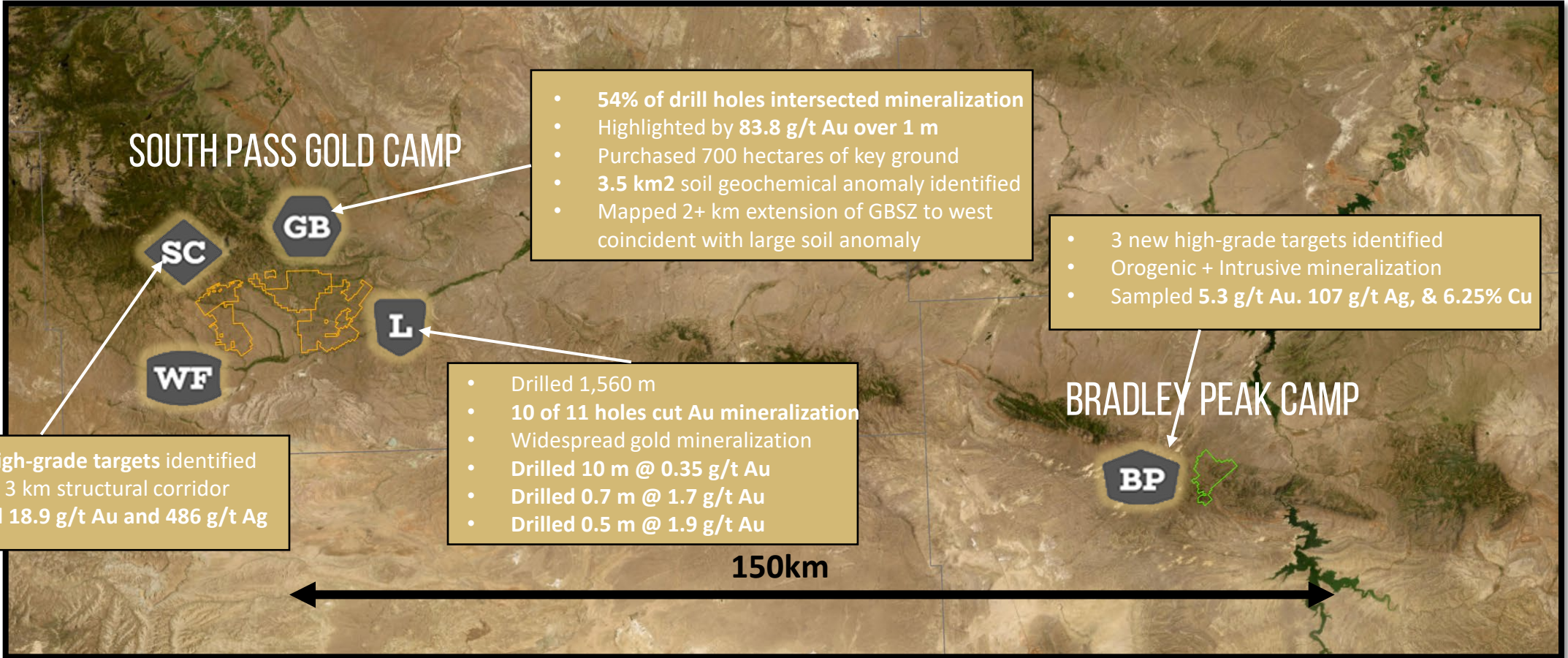
\*2020 Trench sample collected by Golden Buffalo Mining Company





# 2023 EXPLORATION SUMMARY

• Regional Airborne Geophysics survey flown over entire map area in 2023







# SUCCESSFUL EXECUTION

Q1 2023	Feb. 6, 2023	RGC Intersects <b>83.8 g/t Au</b> over 1m at Golden Buffalo; 54% of holes intersect shear-hosted gold mineralization
	Feb. 16, 2023	RGC Reports <b>4.1 g/t Au</b> in Trench Sampling at Golden Buffalo; highest grades along major contacts of GBSZ
Q2 2023	May 4, 2023	RGC Announces Non-Brokered \$3M Private Placement
	May 24, 2023	South Pass, Bradley Peak to be included in WSGS Airborne Geophysical Program adding significant value to shareholders at no additional cost
	June 8, 2023	RGC Closes Oversubscribed \$3M Non-Brokered Private Placement at ~25% premium to share price
Q3 2023	Aug. 3, 2023	RGC Lists on TSXV
	Sep. 13, 2023	RGC Commences Drilling at the Lewiston Project
	Sep. 18, 2023	RGC Adds US Listing on OTCQB
Q4 2023	Nov. 7, 2023	RGC Bradley Peak Sampling includes highlights of <b>5.3 g/t Au, 107 g/t Ag, and 6.25% Cu</b>
	Nov. 16, 2023	RGC Completes <b>1,560 m</b> of Drilling at Lewiston; Proved an orogenic system of scale
	Dec. 14, 2023	RGC Samples <b>18.9 g/t Au</b> and <b>486 g/t Ag</b> along <b>2.7 km</b> of Mineralized Shear Zones at Shield-Carissa
		RGC more than doubles the number of high-grade drill targets at Bradley Peak, Shield-Carissa and Golden Buffalo (12+) Increased the number of mapped shears to <b>50+ km of secondary shears</b> across RGC's 5 district-scale projects
Q1 2024	Jan. 15, 2024	RGC Buys Out Option Completing Acquisition of <b>700 Leased Hectares</b> at Golden Buffalo Project, eliminating \$16.2M in calendar-driven payments
	Feb. 15, 2024	RGC Cuts Widespread Gold Mineralization at the Heavy Hand Target 10 of 11 Drill Holes Hit in First-Ever Drill Program
	Mar. 13, 2024	RGC Reveals <b>3.5 km<sup>2</sup></b> Geochemical Soil Anomaly at Golden Buffalo
	Mar. 25, 2024	Regional magnetics survey highlights major anomalies at Bradley Peak and South Pass Gold Camps





# NEAR-TERM CATALYSTS

The 2024 exploration season will seek to **define the gold potential** with geophysics and drilling at South Pass and identify, refine and permit **high-grade drilling targets** at Bradley Peak.

## 2024 EXPLORATION CATALYSTS



ACQUISITIONS & PERMITTING



ADVANCED GEOPHYSICS



DRILL TARGET REFINEMENT



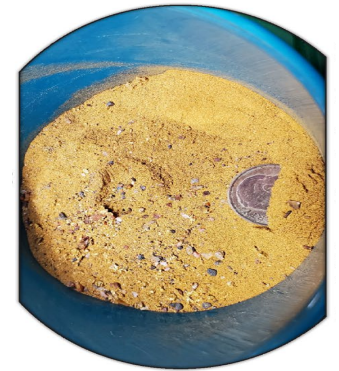
FOLLOW UP DRILL PROGRAM





# WHY INVEST?

- ✓ **Tightly held structure:** ~63M shares outstanding
- ✓ **Upside Multiplier:** A belt-scale concept with a pipeline of discovery opportunities
- ✓ **First Mover Advantage:** 45k-acre land package with 5 district-scale projects in mining-friendly Wyoming
- ✓ **Grade is King:** Proven high-grade orogenic gold at surface and at depth
- ✓ **Strong Market Position:** A pre-discovery opportunity with many near-term catalysts and recent successes
- ✓ **Human Capital Infrastructure:** Backed by proven value creators who have taken multiple companies from exploration stage small caps to multi-\$B producers/exits





“Any time you can apply a **really revolutionary idea** to a new area and then be able to tie up a big piece of it, in an area where you know you can work, that’s a **remarkable opportunity** under any circumstances.”

**Dr. Peter Megaw, PhD**  
Independent Director, Relevant Gold Corp.

 **RELEVANT GOLD** TSXV:RGC | OTCQB:RGCCF

## Gold Newsletter

Vol. LI April 2024

“For those who want to invest in **belt-scale gold potential** in a rising gold environment, **now is a good time to begin accumulating Relevant Gold.**”

[CLICK TO READ ARTICLE](#)



A promotional image for Relevant Gold featuring two men in orange hard hats and safety vests in a mining field. In the background, there is a drilling rig and a pickup truck under a blue sky with scattered clouds. A large, semi-transparent 'X' is overlaid on the background.

# JOIN US FOR THE NEXT BIG DISCOVERY

[WWW.RELEVANTGOLDCORP.COM](http://WWW.RELEVANTGOLDCORP.COM)

[@RELEVANTGOLDCORP](https://twitter.com/RELEVANTGOLDCORP)



**FOR QUESTIONS & INFORMATION, PLEASE CONTACT:**

[investorrelations@relevantgoldcorp.com](mailto:investorrelations@relevantgoldcorp.com)  
+1-763-760-4886

**RELEVANT GOLD**

TSXV:RGC | OTCQB:RGCCF



# APPENDIX

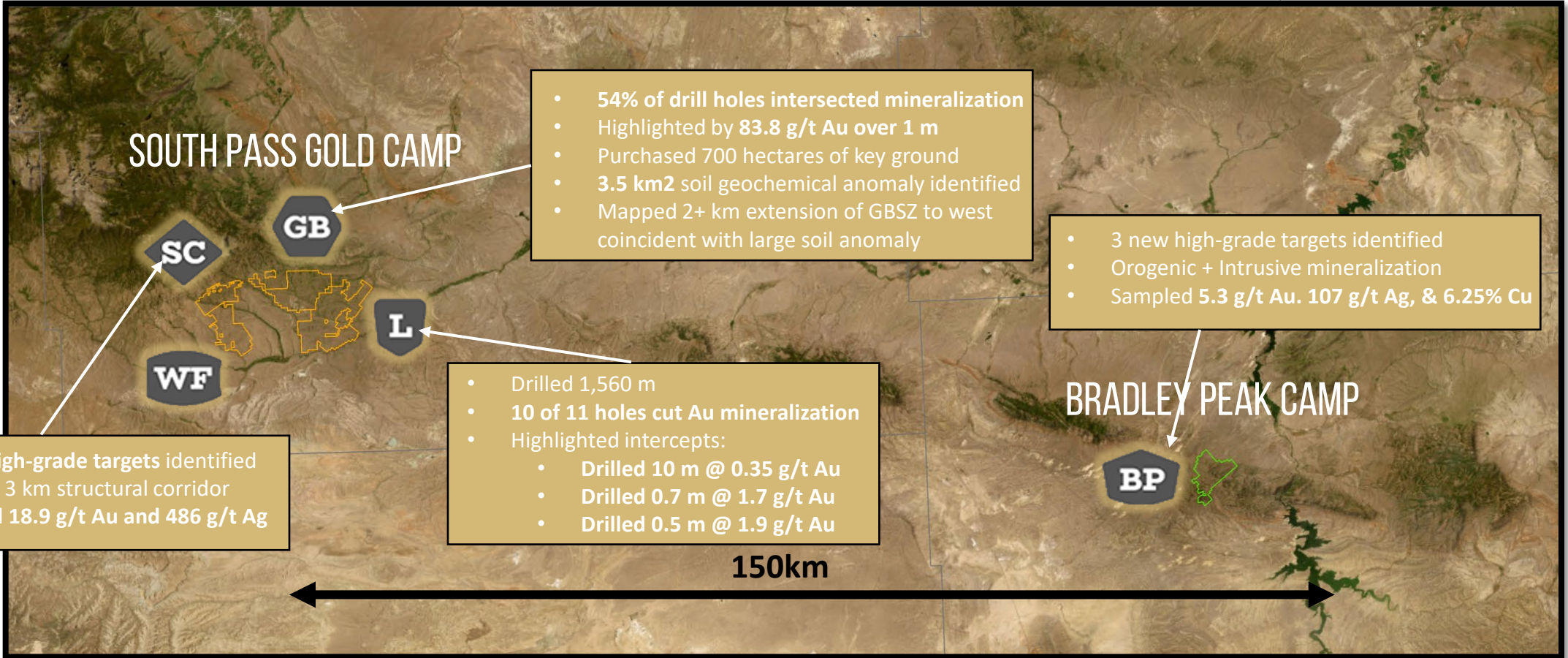
## 2023 HIGHLIGHTS AND RESULTS

RELEVANT **GOLD**



# 2023 EXPLORATION SUMMARY

• Regional Airborne Geophysics survey flown over entire map area in 2023



- 3 new high-grade targets identified
- 1.5 km x 3 km structural corridor
- Sampled 18.9 g/t Au and 486 g/t Ag

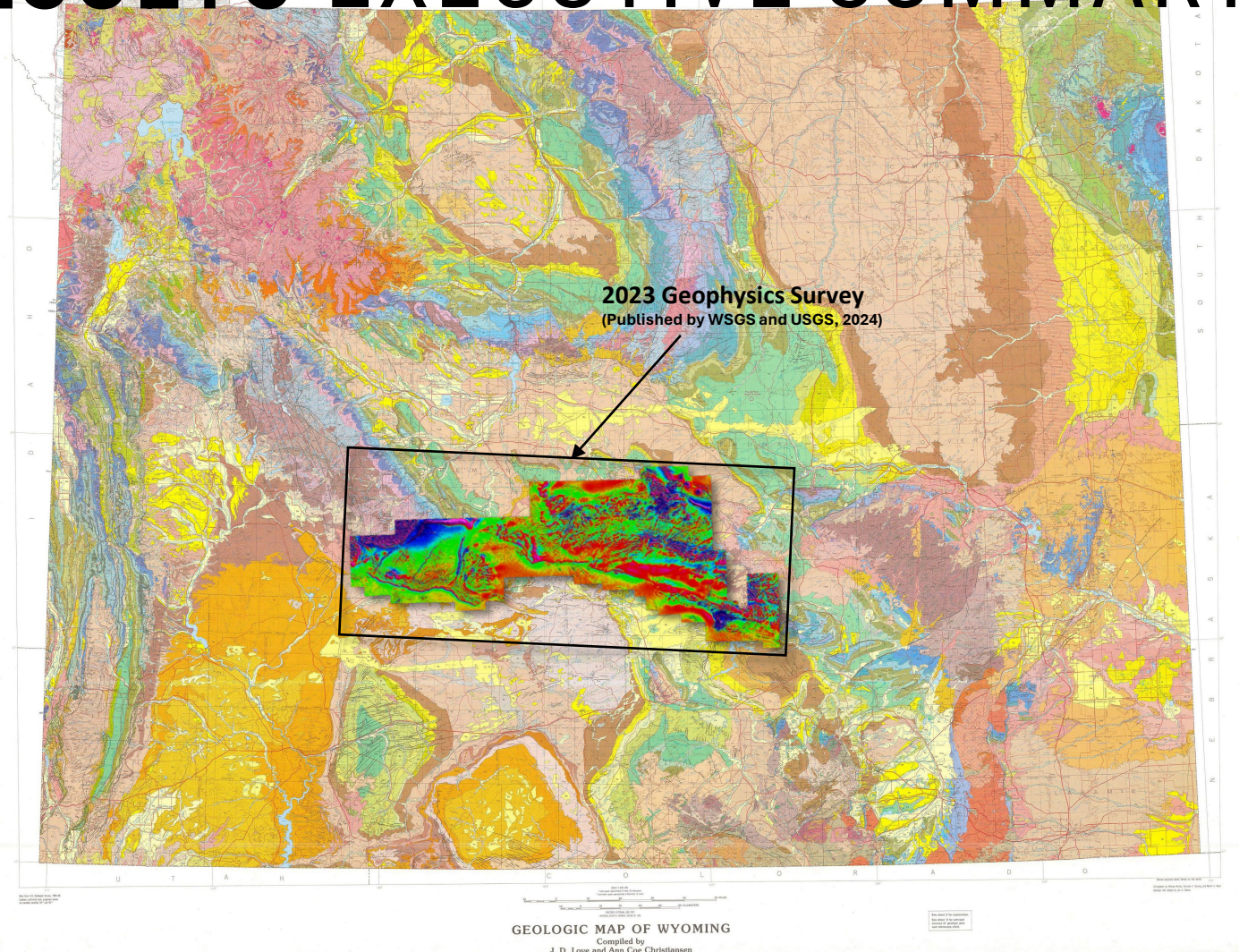
- Drilled 1,560 m
- 10 of 11 holes cut Au mineralization
- Highlighted intercepts:
  - Drilled 10 m @ 0.35 g/t Au
  - Drilled 0.7 m @ 1.7 g/t Au
  - Drilled 0.5 m @ 1.9 g/t Au





# GEOPHYSICAL RESULTS EXECUTIVE SUMMARY

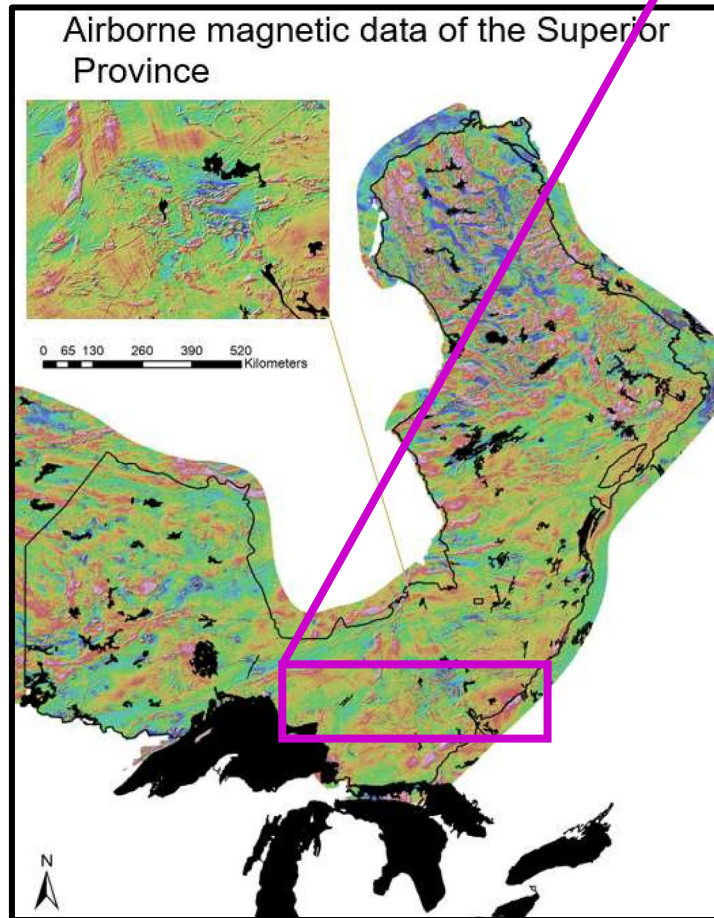
- MAGNETIC SURVEY PROVIDES KEY DETAILS LACKING IN REGIONAL GEOLOGY MAPS
- DETAILED RELEVANT GOLD MAPPING AGREES WITH MAGNETIC DATA
- MAGNETICS HIGHLIGHT CRITICAL OROGENIC STRUCTURES THAT COMMONLY TRANSPORT GOLD MINERALIZATION
- CRUSTAL SCALE ARCHEAN STRUCTURES IDENTIFIED AND CONFIRMED
- GEOPHYSICS SUPPORTS OUR TARGET CONCEPTS AND WE CAN TIGHTEN TARGETS WITH MAGNETIC DATA
- SOUTH PASS AND BRADLEY PEAK NOW CLEARLY CONNECTED ALONG THIS PRIMARY STRUCTURE
- HIGH-GRADE GOLD CONFIRMED IN SECONDARY STRUCTURES ACROSS BOTH RGC CAMPS (South Pass & Bradley Peak)
- TWO MOST PROLIFIC STRUCTURAL/MAGNETIC ANOMOLIES ARE AT SOUTH PASS AND BRADLEY PEAK
- 100 KM2 ANOMALY AT BRADLEY PEAK ENCOURAGES EXPEDITED DEVELOPMENT TO DRILLING







# ABITIBI COMPARISON



Airborne magnetic data of the Superior Province

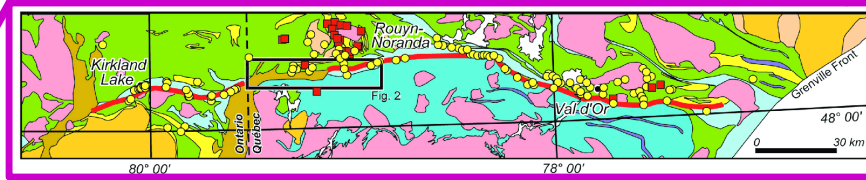
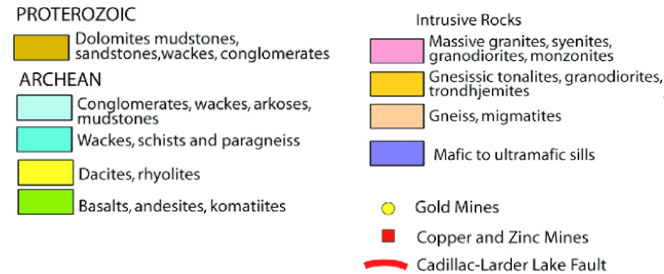
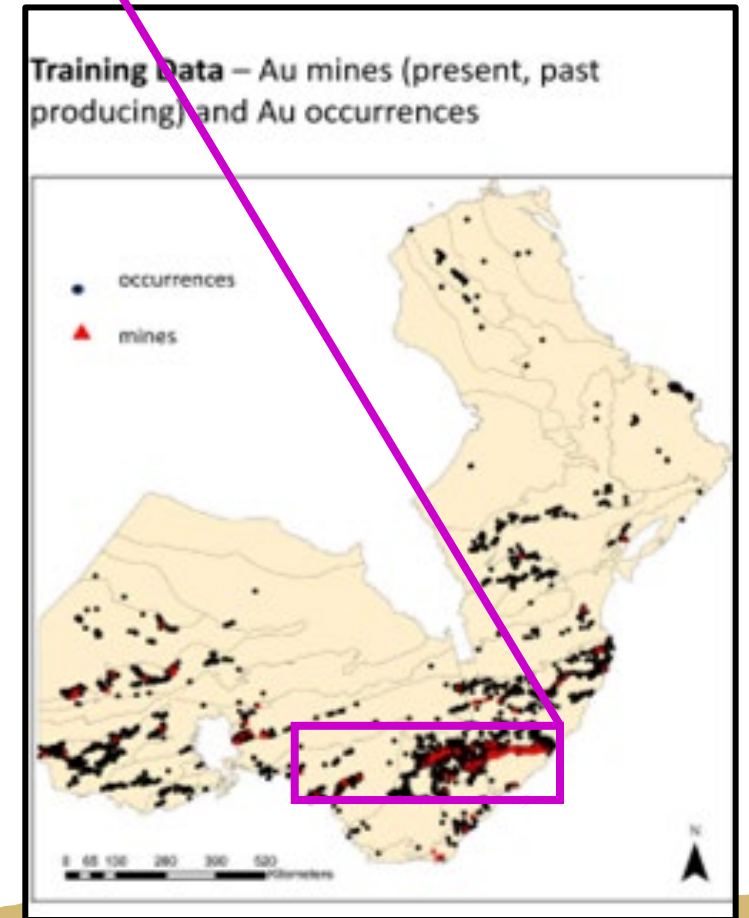


Figure source: Rabeau et. al., 2011



- Magnetic data in Abitibi highlights major Archean structures like the Cadillac-Larder deformation zone.
- Sharp linear contrasts in the regional magnetic data matches up with Archean structural trends.
- *First-order exploration tool used to identify primary structural controls on gold mineralization throughout the Abitibi Gold Belts.*



Training Data – Au mines (present, past producing) and Au occurrences




Figure source: Harris et. al., 2023

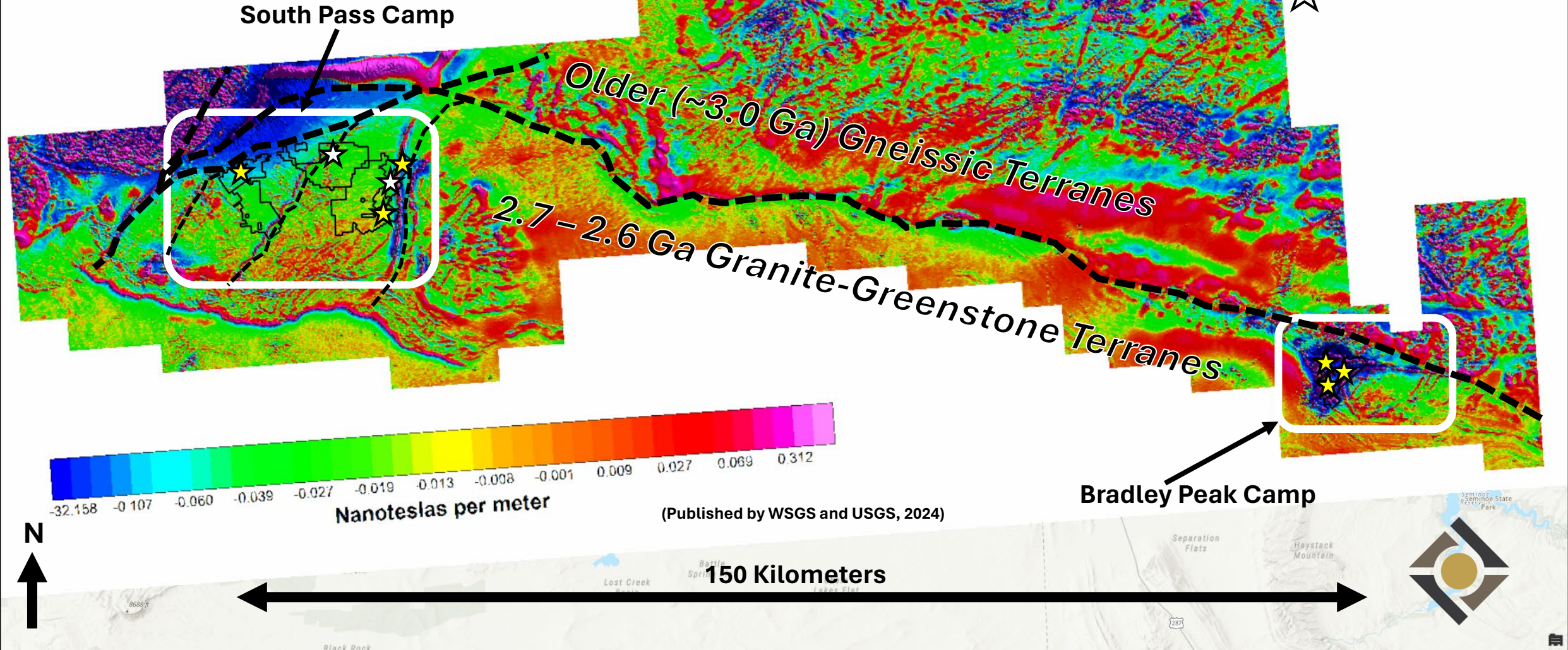
Figure source: Harris et. al., 2023, A study of faults in the Superior province of Ontario and Quebec using the random forest machine learning algorithm: Spatial relationship to gold mines.

# Airborne Magnetics – Vertical Derivative

## Relevant Gold Regional Interpretation

### Legend

-  Major Archean Structure
-  High-grade Au rock assays
-  High-grade Au drilling assays



South Pass Camp

Older (~3.0 Ga) Gneissic Terranes

2.7-2.6 Ga Granite-Greenstone Terranes

Bradley Peak Camp

Nanoteslas per meter

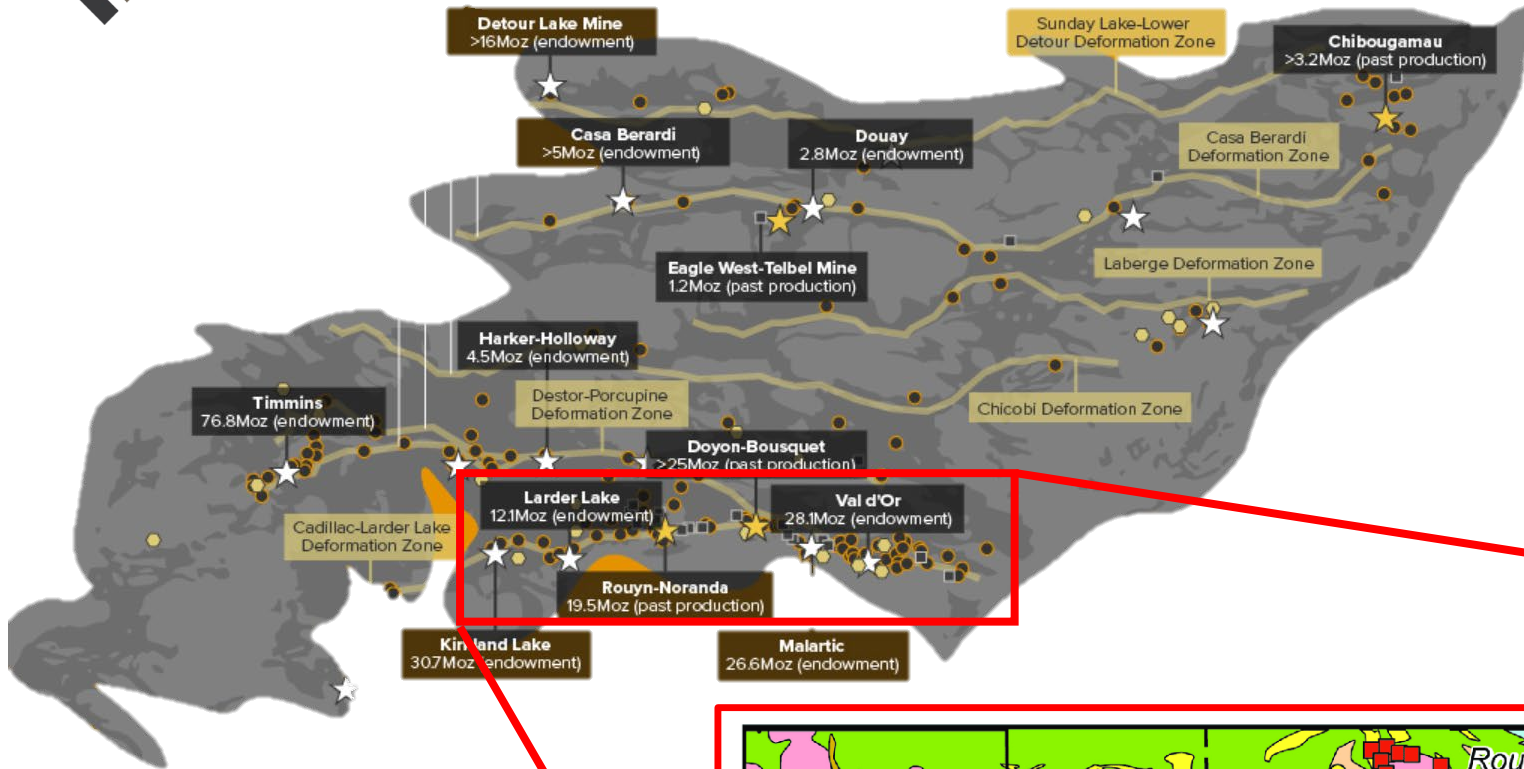
(Published by WSGS and USGS, 2024)

150 Kilometers





# OPPORTUNITY OF SCALE



- New Wyoming magnetics survey confirms Archean structure comparable in size and scale to the Cadillac-Larder Lake Deformation Zone
- Gold mineralization commonly occurs in secondary structures within 7 km of the major structures in the Abitibi and Wyoming.
- *The magnetic data confirms we have some of the best discovery opportunities on Wyoming's main street!*

Figure Source: Modified from Visual Capitalist, Canada's Gold Exploration Frontier: The Abitibi Greenstone Belt, May 19, 2021

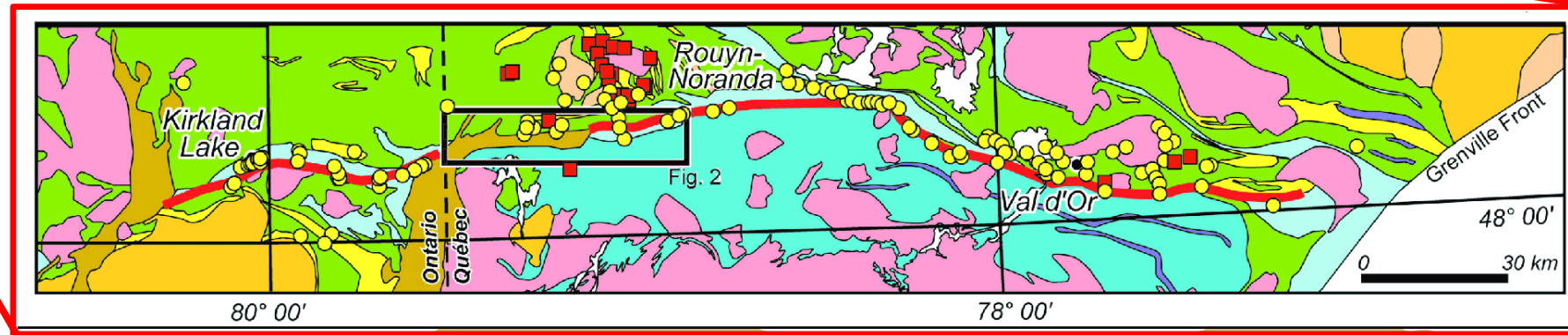


Figure Source: Rabeau et. al., 2011, Modified from Gold Potential of a Hidden Archean Fault Zone: The Case of the Cadillac-Larder Lake Fault, VL - 19, DO - 10.2113/gsemg.19.3-4.99, JO - Exploration and Mining Geology ER



# CONTROLLING THE CAMP

Applying Abitibi Insights to Guide Exploration and Acquisitions in the South Pass Gold Camp

## HOW WE APPLIED THESE ABITIBI INSIGHTS:



### SECURED OPPORTUNITY AT SCALE

Relevant Gold's South Pass Gold Camp fits all the size comparison criteria for an Abitibi-style deposit of multi-million ounce potential.



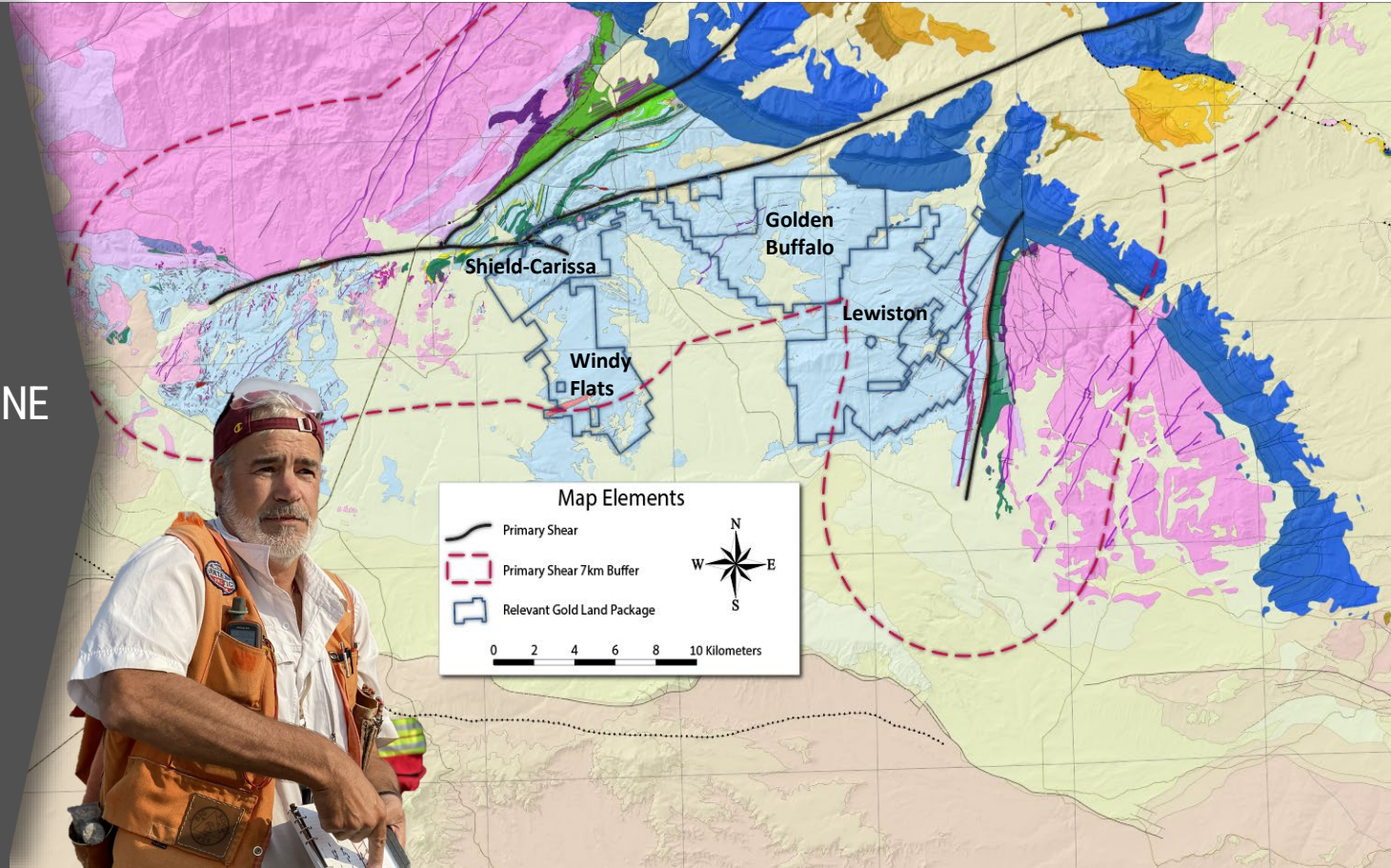
### SECURED BUFFER AROUND PRIMARY SHEAR ZONE

Relevant Gold's 4 district-scale projects in South Pass Camp all fall within a 6 km buffer zone of primary structures, consistent with the Abitibi Belt.



### SECURED HIGH-GRADE TARGETS WITH SECONDARY STRUCTURES

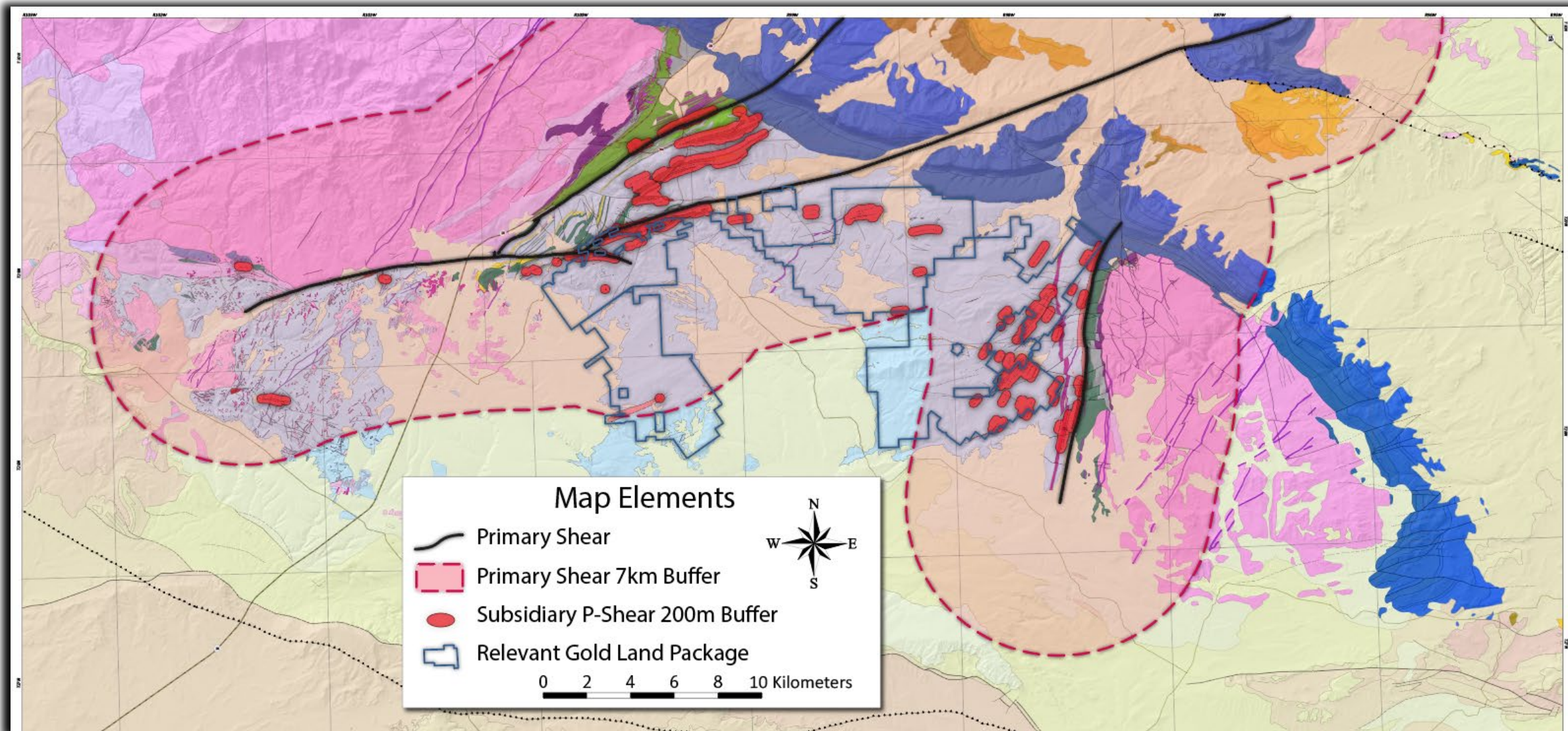
Relevant Gold's South Pass Gold Camp consists of secondary shear structures associated with high-grade gold.





# SECONDARY SHEARS – SOUTH PASS

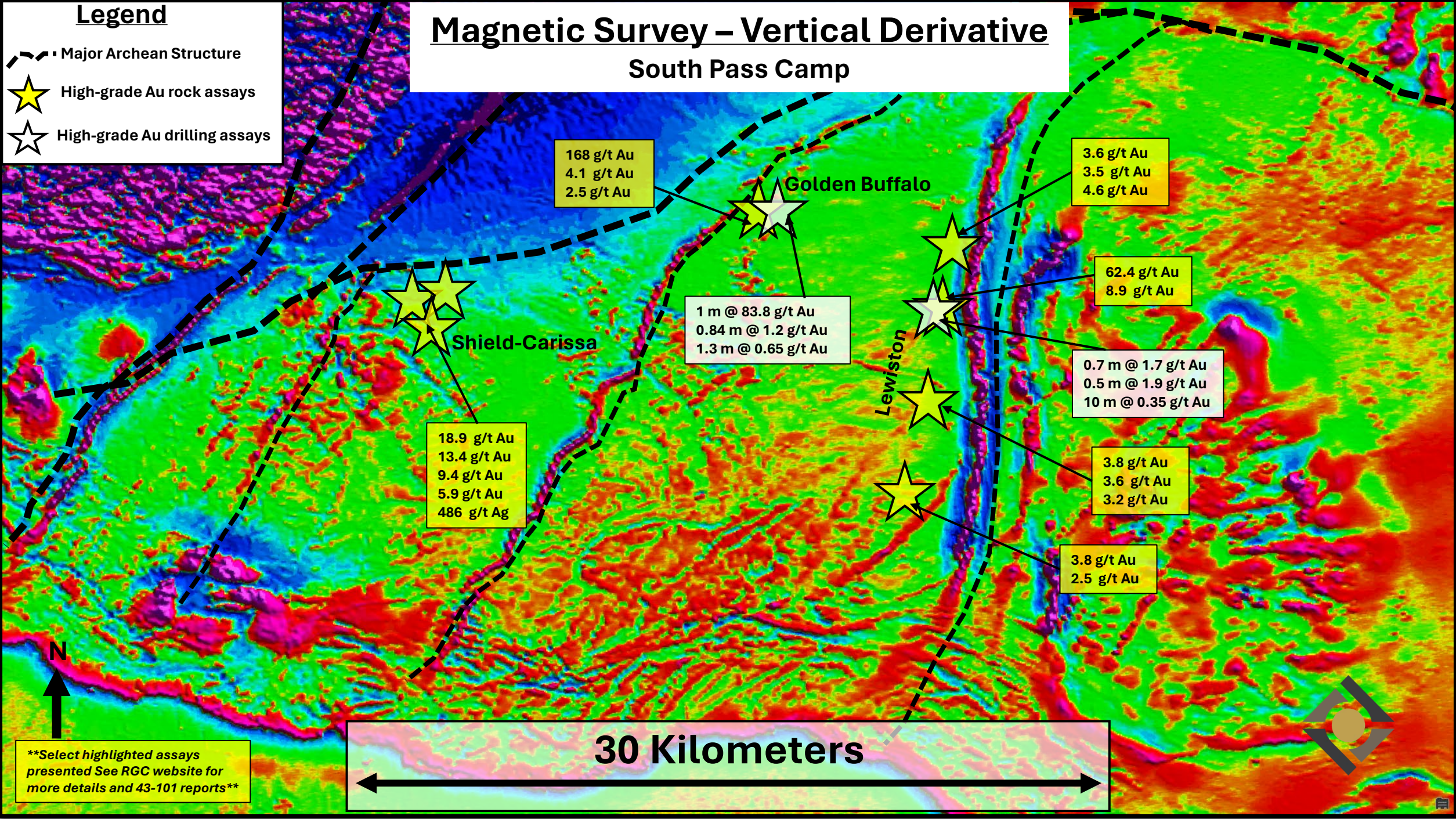
Herein primary & Reidel P-shear zone buffers



# Legend

- Major Archean Structure
- High-grade Au rock assays
- High-grade Au drilling assays

# Magnetic Survey – Vertical Derivative South Pass Camp



168 g/t Au  
4.1 g/t Au  
2.5 g/t Au

Golden Buffalo

3.6 g/t Au  
3.5 g/t Au  
4.6 g/t Au

Shield-Carissa

1 m @ 83.8 g/t Au  
0.84 m @ 1.2 g/t Au  
1.3 m @ 0.65 g/t Au

62.4 g/t Au  
8.9 g/t Au

Lewiston

0.7 m @ 1.7 g/t Au  
0.5 m @ 1.9 g/t Au  
10 m @ 0.35 g/t Au

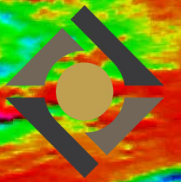
18.9 g/t Au  
13.4 g/t Au  
9.4 g/t Au  
5.9 g/t Au  
486 g/t Ag

3.8 g/t Au  
3.6 g/t Au  
3.2 g/t Au

3.8 g/t Au  
2.5 g/t Au

30 Kilometers

\*\*Select highlighted assays presented See RGC website for more details and 43-101 reports\*\*





# LEWISTON OVERVIEW

## HIGH-GRADE

- Relevant Gold rock chip samples up to **62 g/t Au + 8.1% Cu**
- Historic reported samples include **1,690 oz/ton Au**

## DISTRICT-SCALE

- **~14,000** acres (5,665 ha) of BLM mining claims
- **58** acres (23 ha) of patented claims at Hidden Hand mine

## SHEAR-HOSTED

- **>10km** prospective shear zone trend
- Gold hosted in vertical secondary shears

## ACTIVELY DRILLING

- **2 of 6** targets permitted; 3<sup>rd</sup> permit pending
- **1,560 m** drilling exploration program (2023) intersected shear-hosted gold in **10 of 11** holes

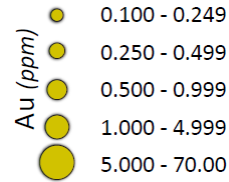


Relevant Gold's Lewiston property includes 4 historic high-grade gold mines

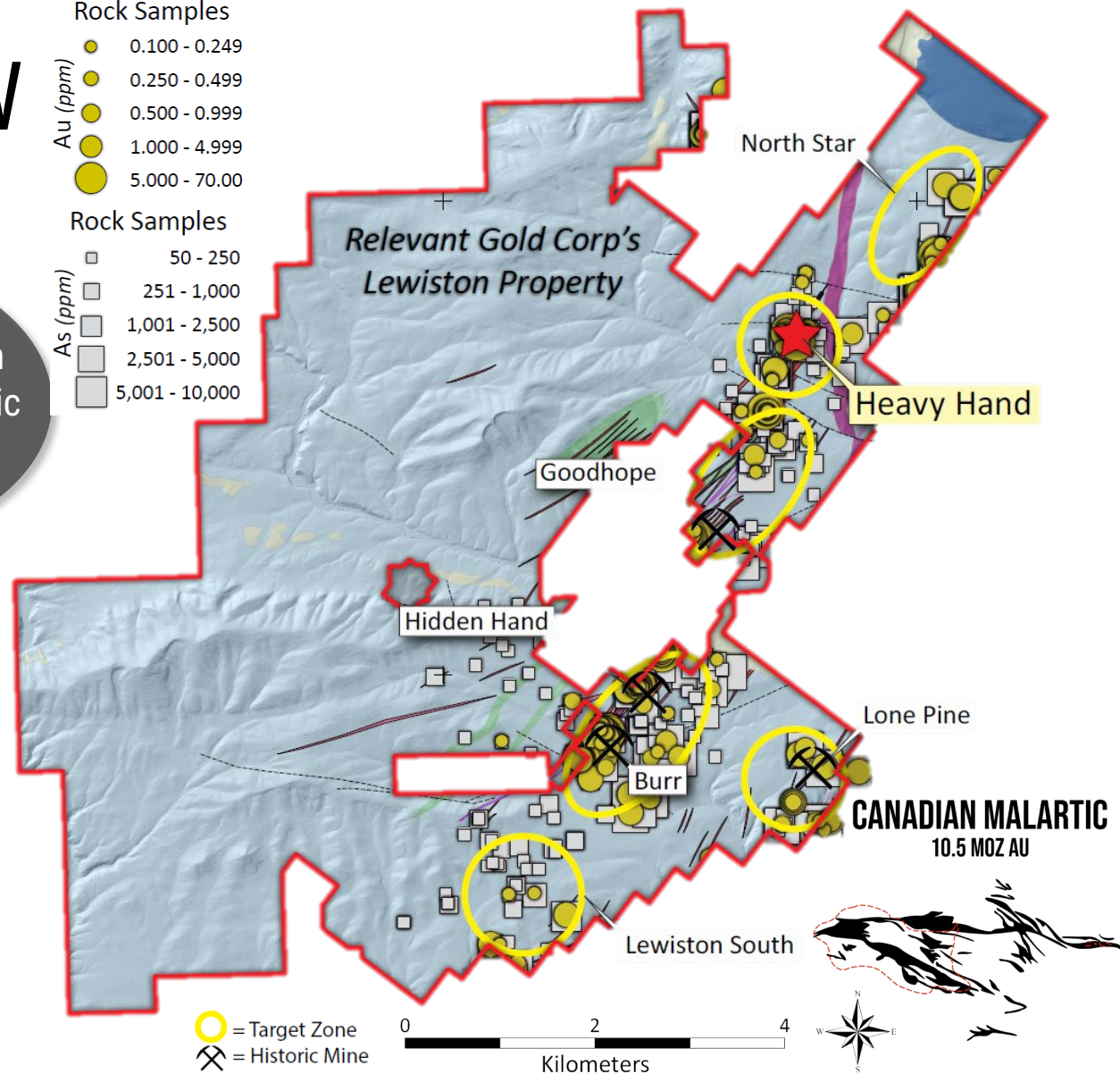
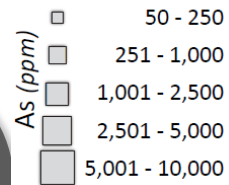
### Future Exploration Work:

- Phase 2 drilling
- Detailed geophysics
- Drill target refinement

### Rock Samples



### Rock Samples





# HISTORIC MINING IN LEWISTON

RELEVANT GOLD

## LEWISTON

### LAND PACKAGE

INCLUDES:

#### HIDDEN HAND

- 110ft shaft with 640ft of drift prior to 1926 (Henderson, 1926)
- Ore from 30ft level assay 75oz/ton
- One rich ore shoot produce several specimen grade gold samples one assayed at 3,100 oz/ton Au (Pfaff, 1978)

#### BURR

- First major discovery in Lewiston district multiple shafts, adits and inclines
- Historic assays include some high-grade zones from 25 to 250 oz/ton Au with some rare specimen grade at 1,690 oz/ton Au (Wyoming Industrial Journal, 1901)
- One 16ft wide zone averaged .5 oz/ton. Some sheelite reportedly ran with gold and some samples yielded 2.5 to 75% tungsten oxide

#### GOODHOPE

- Shallow shaft sunk on N45E trending vertical, chloritized shear zone
- 100ft trench south of the shaft with visible gold
- Grab sample assayed 1.18oz/ton gold (Housel, 1991)
- Much of the shearzone is unexplored

#### LONE PINE

- 470ft adit and a shaft
- Narrow shears and breccia zones were crosscut and one narrow vein assayed .61 oz/ton gold (Housel, 1991)
- One channel sample across a hidden shear zone averaged 1.6ppm Au (Housel, 1991)





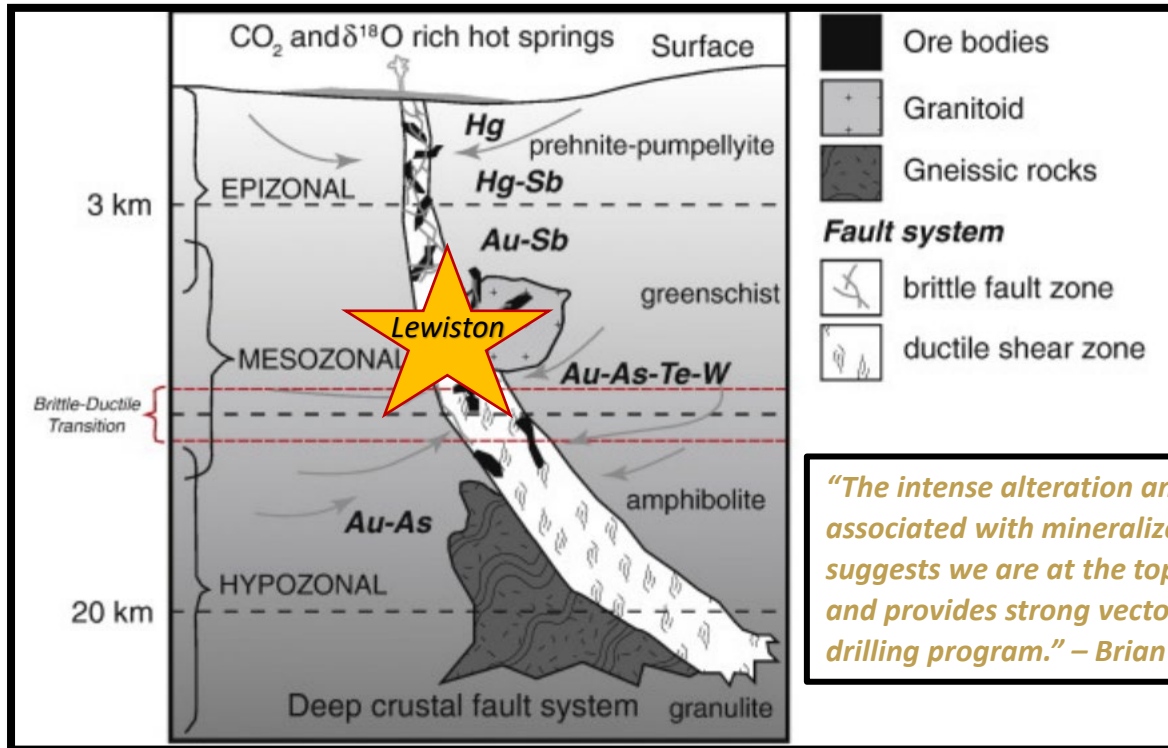
# MINERALIZATION & ALTERATION MODEL

## Trace Element Geochemistry

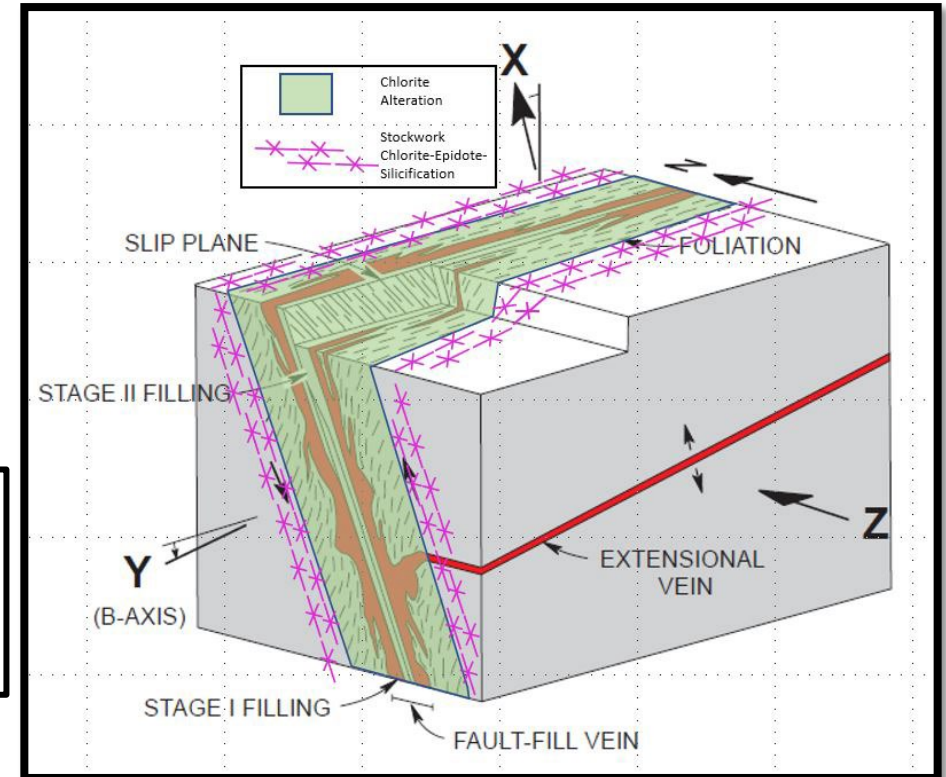
- ◆ Lewiston is in the sweet spot for an orogenic gold system
- ◆ As-Ag-Bi-Sb-Te-W
- ◆ > 50% positive correlation to gold in RGC geochemistry

## Alteration Assemblage (Abitibi-style)

- ◆ Primary: Sericite-Pyrite-Arsenopyrite
- ◆ Proximal: Silicification-Chlorite/Epidote
- ◆ Distal: Decrease in Chlorite with stock-work silicification



*"The intense alteration and sulfides associated with mineralized shears suggests we are at the top of the system and provides strong vectors for a deeper drilling program." – Brian Lenz, CXO*



Goldfarb & Groves, 2015

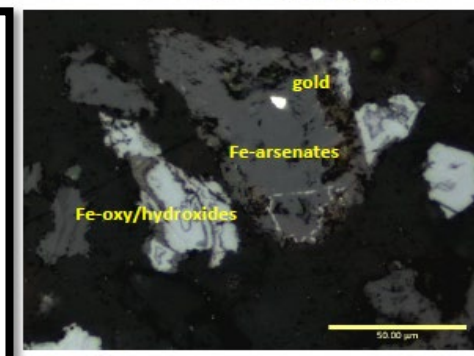
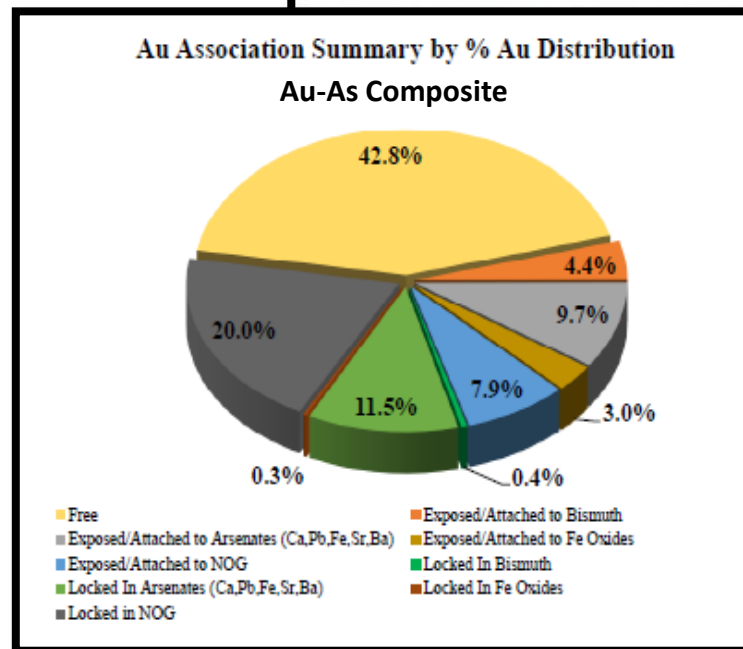
Robert, 1990



# GOLD DEPARTMENT & METALLURGY

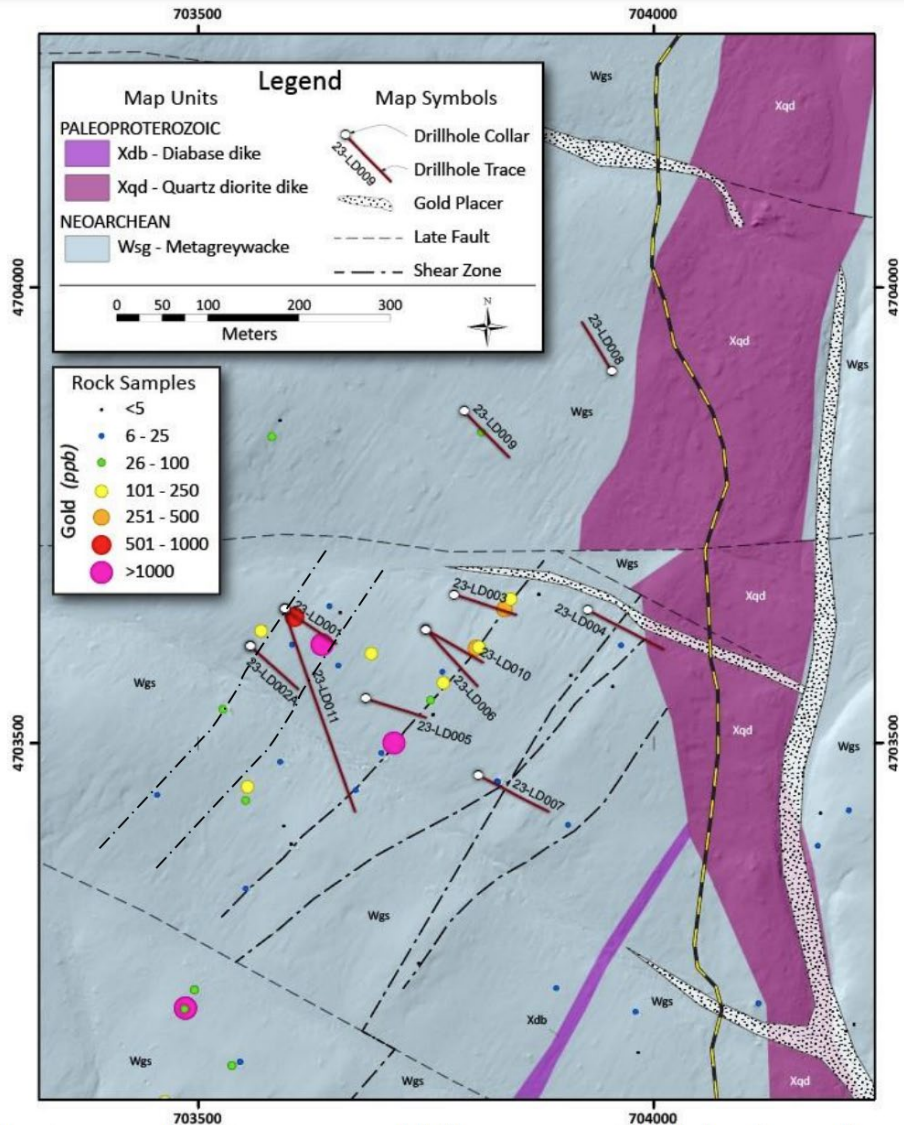
## Highlights

- ◆ 2 composite samples from distinct geochemical mineralization styles
  - Au-As rich veins
  - Au-As-Cu-Ag rich mineralization
- ◆ Samples represent deeply *oxidized* caps of the orogenic gold system
- ◆ Generally, these samples contain a significant amount of free gold associated with **silicates**, **arsenates**, **oxides**, and native **bismuth**





# LEWISTON HEAVY HAND DRILLING



## Project Design

- ✓ Test 500m corridor of stacked shear zones
- ✓ Alteration & sulfide mineralization under the oxidized zone
- ✓ 500m+ strike length of shear corridor
- ✓ Late fault offset & contact zones

## Overview

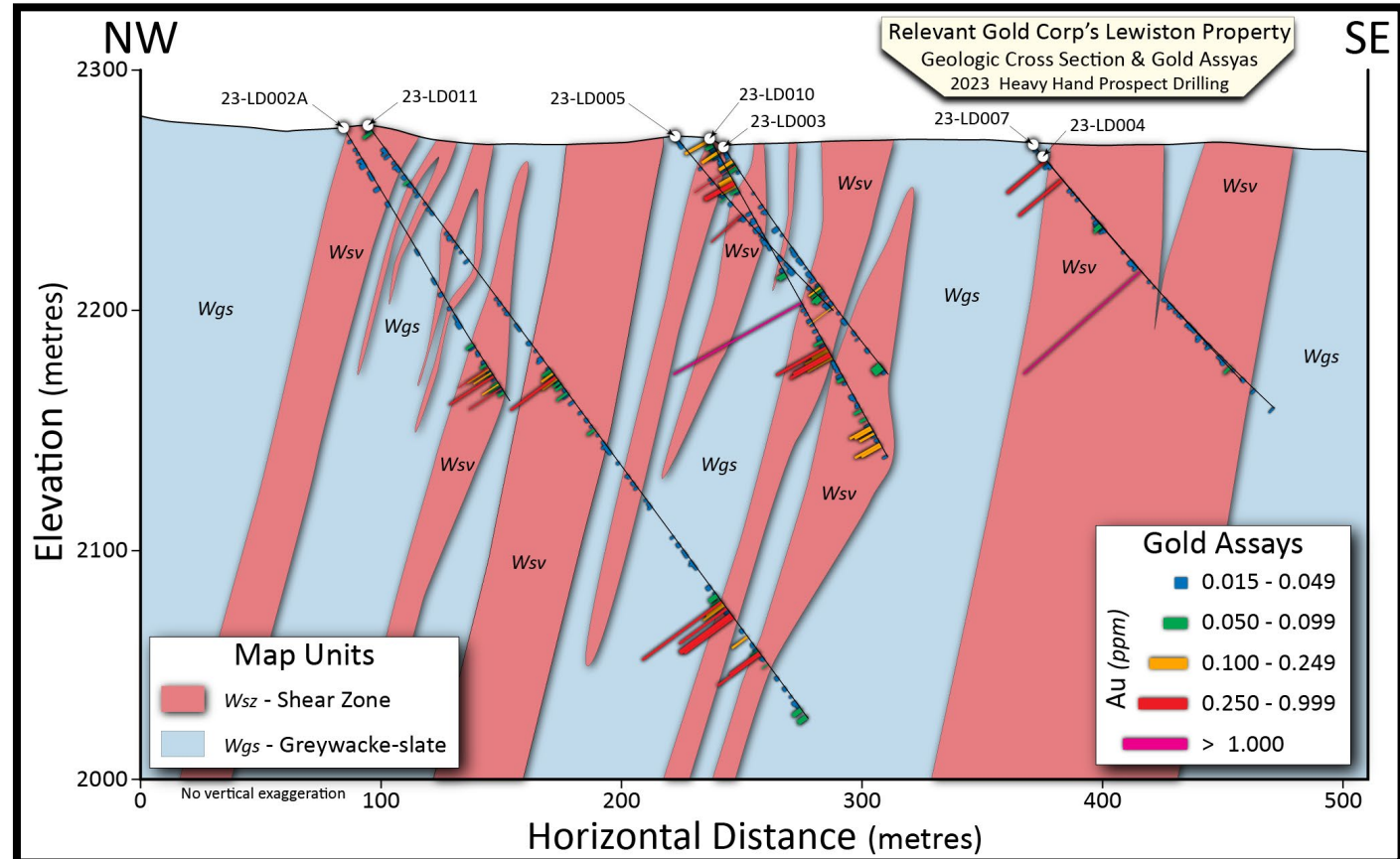
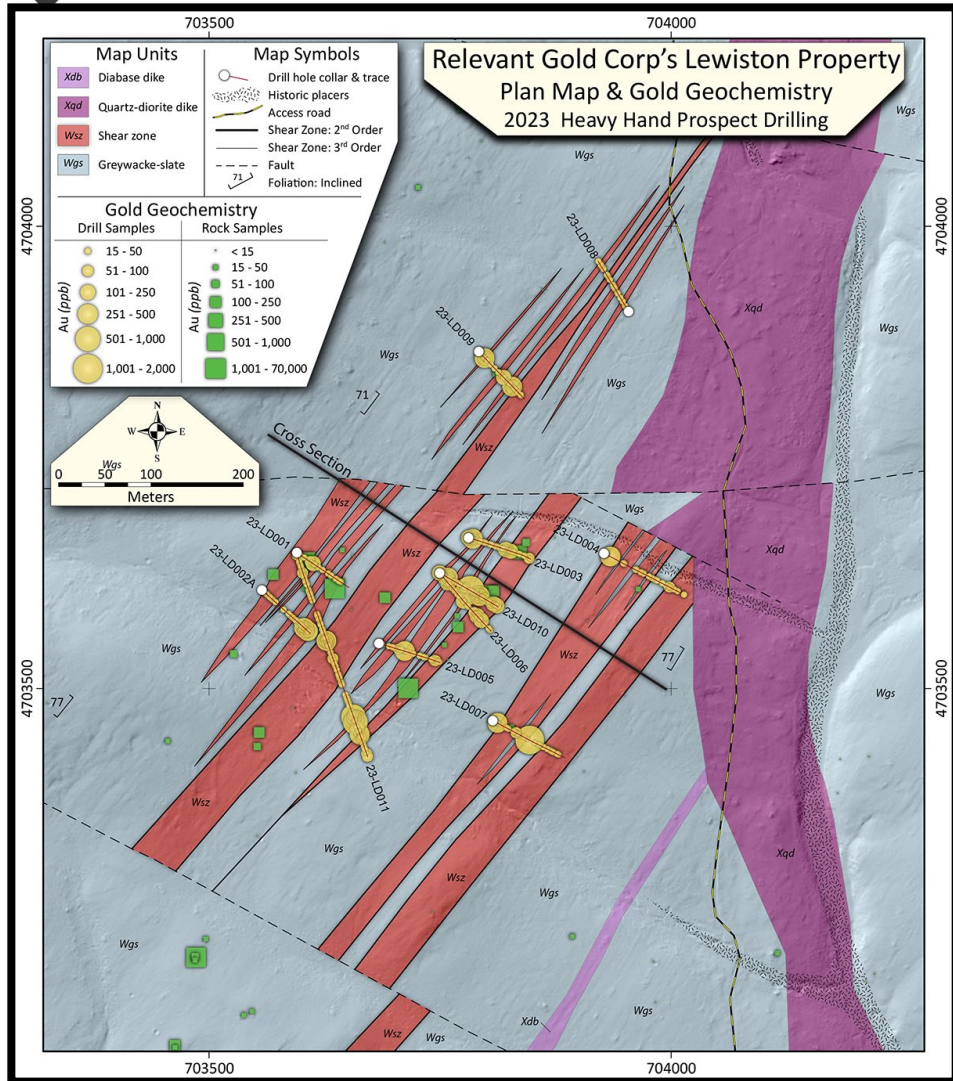
- ◆ 1,560m drilled
- ◆ Sep 11<sup>th</sup> start; Nov 13<sup>th</sup> completion
- ◆ 11 holes drilled - HQ core
- ◆ 10 of 11 drill holes intersected shear-hosted Au mineralization
- ◆ Intersected shear zones in multiple drill holes up to 200m depth; including known shear zones and blind shear zones
- ◆ Confirmed significant alteration, veining and relic sulfides

READ THE RELEASE





# 2023 HEAVY HAND DRILLING MAP & SECTION



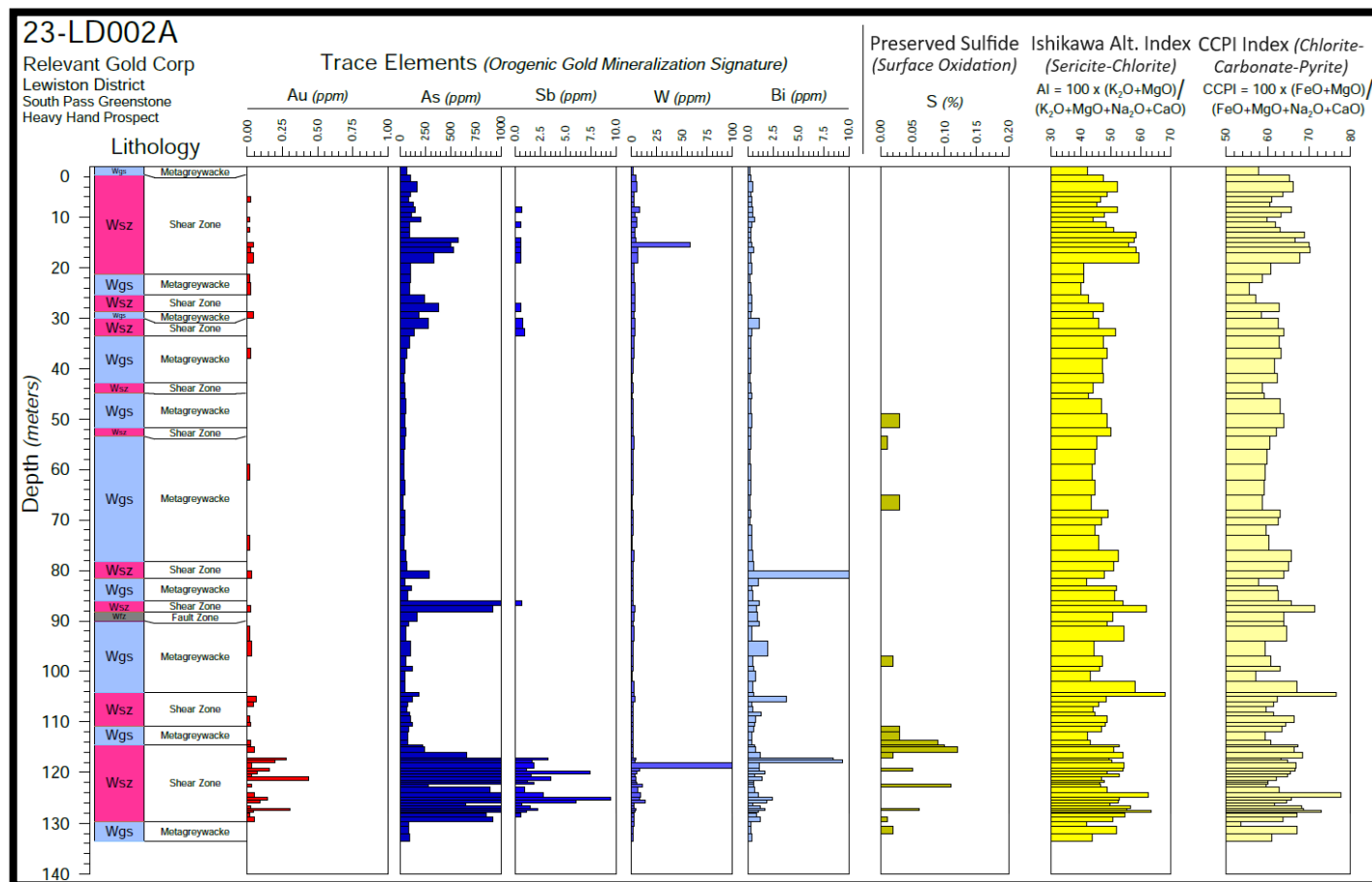
*“As the first ever drilling program, the widespread gold intercepts intersected within multiple shears at Heavy Hand illustrate a well mineralized, near vertical gold system, just like we see in the Abitibi Gold Belt.” – Brian Lentz, CXO*



# MINERALIZATION & GEOCHEMISTRY

## Highlights:

- **Hole 23-LD011:**
  - 10 m core length averaging **0.35 g/t Au** from 273m – 283m; including 1 m of **0.96 g/t Au** from 273 m – 274 m.
  - 2 m core length averaging **0.37 g/t Au** from 302 m – 304 m within fresh Arsenopyrite-Pyrite-Pyrrhotite mineralization.
- **Hole 23-LD010:**
  - 5 m core length averaging **0.16 g/t Au** from 18 m – 23 m.
  - 0.7 m core length of **1.72 g/t Au** from 78 m – 78.7 m.
  - 6 m core length averaging **0.29 g/t Au** from 99 m – 105 m.
  - 10 m core length averaging **0.10 g/t Au** from 137 m – 147 m.
- **Hole 23-LD009:**
  - 2.4 m core length averaging **0.30 g/t Au** from 13.71 – 16.10 m.
  - 4 m core length averaging **0.18 g/t Au** from 80 m – 84 m.
- **Hole 23-LD007:** 0.5 m core length of **1.9 g/t Au** from 69 m-69.6 m.
- **Hole 23-LD002A:** 10.34 m core length averaging **0.1 g/t Au** from 117.14 m – 127.48 m within a larger 33.5 m strongly altered hematite-chlorite-biotite-sericite-sulfide shear zone.



**RELEVANT GOLD**



# SHEARING – ALTERATION – VEINING



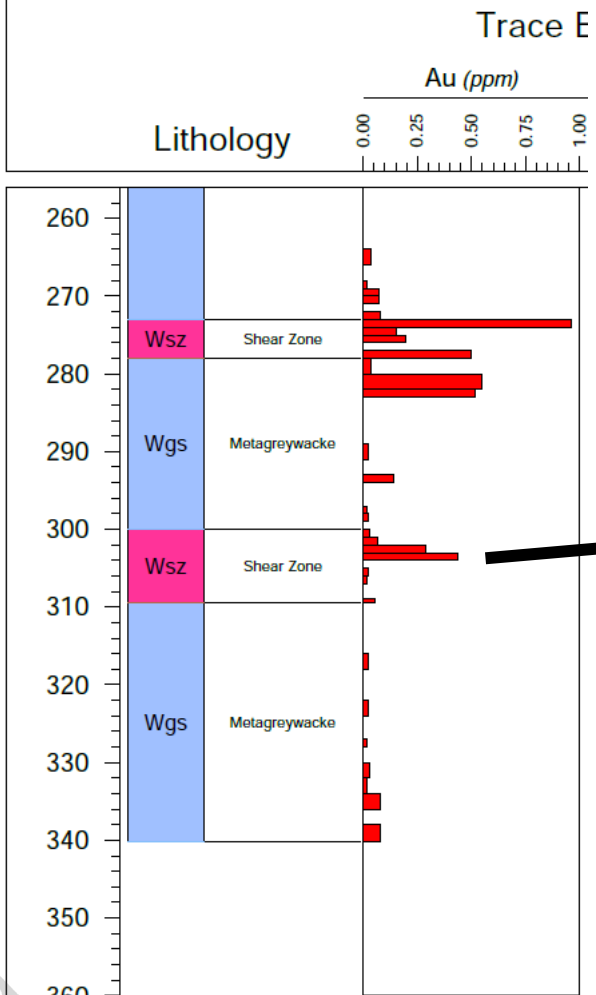
## Initial Core Observations (LD002A)

- ◆ Distinctive alteration mapped at surface confirmed in core
- ◆ Chlorite-Hematite-Sericite-Biotite-Carbonate alteration
- ◆ Distinct shear foliation with local crenulations and “wavy” fabric
- ◆ Relic sulfide mineralization



# MINERALIZATION & GEOCHEMISTRY

23-LD011



*“So far, Heavy Hand checks all the early boxes necessary to quickly evolve into a major gold discovery in Wyoming.” – Rob Bergmann, CEO*

## 23-LD011

- Identified blind mineralized shear zone
- Confirmed continuity of strongly altered shear-zone in hole LD002A (~100m depth)
- Confirmed continuity of primary surface mineralized shear zone to >200m depth
- Drilled beneath oxidized zone into fresh sulfide mineralization (~200m)
- Geochemistry pending*

**RELEVANT GOLD**

TSXV:RGC | OTCQB:RGCCF



# GOLDEN BUFFALO OVERVIEW

## HIGH-GRADE

- Abundant high-grade gold at surface; Rock chip assays up to **160+ g/t Au**
- **Visible** coarse gold trenced

## DISTRICT-SCALE

- **9,600** Acres (3,884 ha) of BLM mining claims
- **300** acres (121 ha) of patented ground
- **>600** acres (242 ha) of private surface land with water rights

## SHEAR-HOSTED

- **Confirmed** large-scale orogenic system
- **GBSZ** deep-rooted fertile gold structure

## DRILLING RESULTS

- Drilled **26** holes and **~3,500m** in 2022 field season (first-ever drill program).
- Shear-hosted gold mineralization in **54%** of holes with top intercept: **1m of 83.8 g/t Au**



Coarse Gold in Shear Zone Quartz Veins

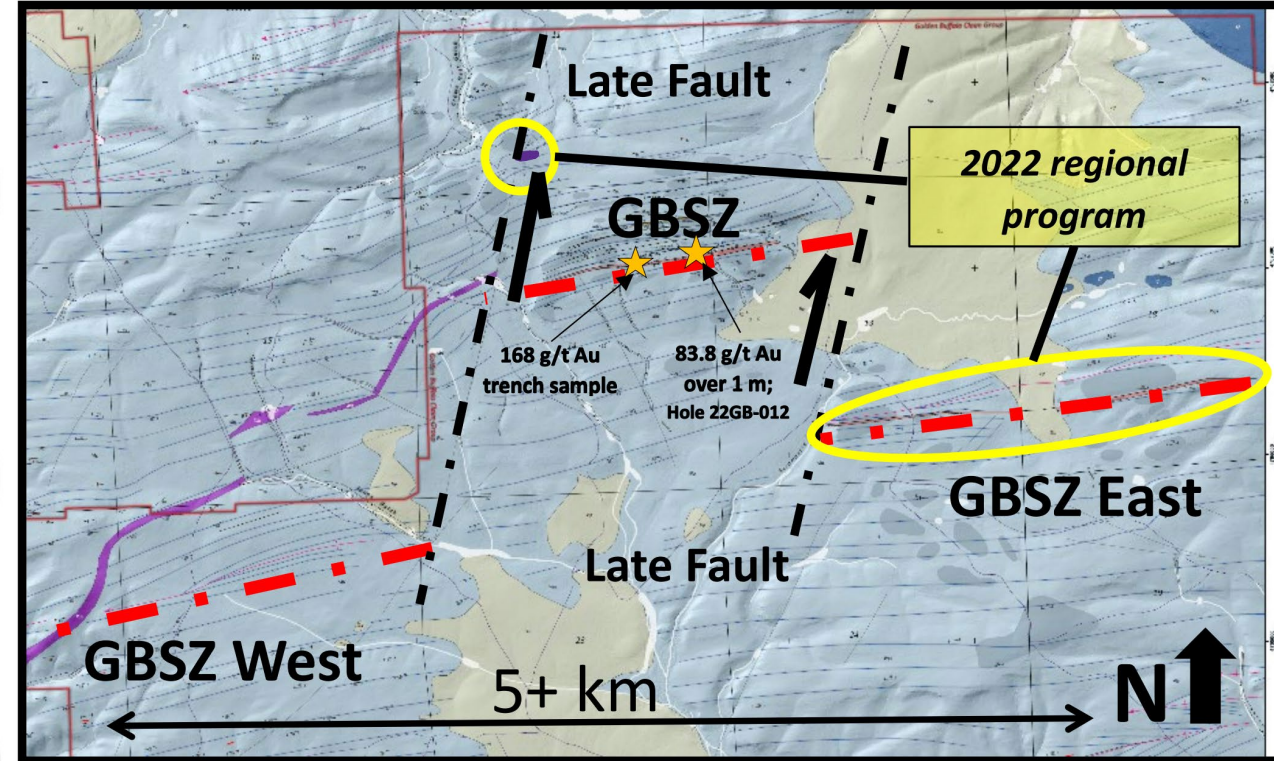


Gold Nuggets



Fine Gold Panned from Surface Materials

## GOLDEN BUFFALO SHEAR ZONE (GBSZ)



**FIGURE:** Map illustrating the primary Golden Buffalo Shear Zone (GBSZ) and interpreted extensions to the west and east identified during the 2022 mapping program.

*"The high-grade surface results tie well to what we saw in high-grade drill intercepts about 400 m farther east and indicate we are onto a large fertile system at Golden Buffalo." – Rob Bergmann, CEO*







# GOLDEN BUFFALO 2023 SUMMARY

High-grade gold from GBMC trench area



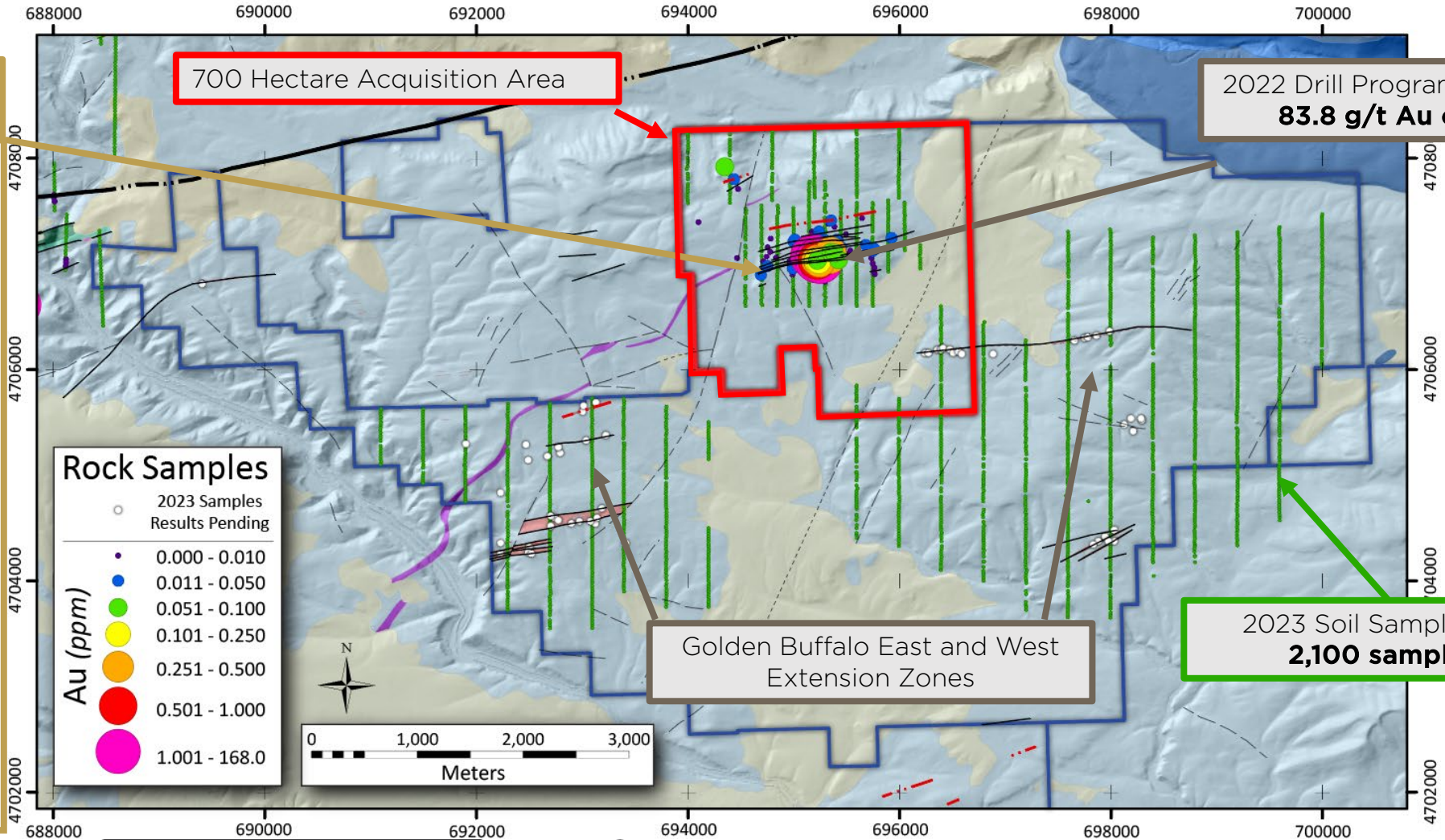
Coarse Gold in Shear Zone Quartz Veins



Gold Nuggets



Fine Gold Panned from Surface Materials





# GOLDEN BUFFALO 2023 SOIL SAMPLING

High-grade gold from GBMC trench area



Coarse Gold in Shear Zone Quartz Veins



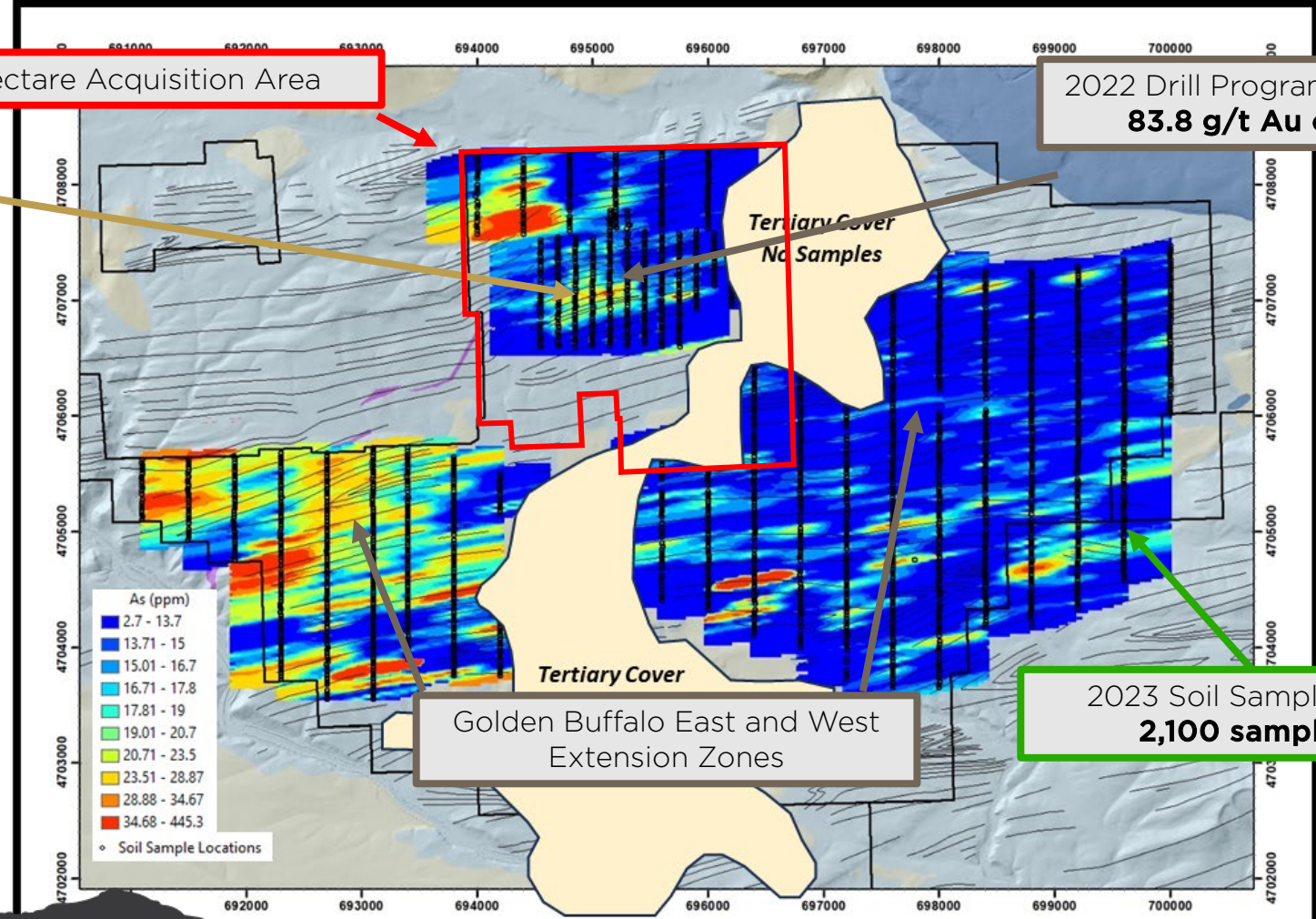
Gold Nuggets



Fine Gold Panned from Surface Materials

700 Hectare Acquisition Area

2022 Drill Program Intersected **83.8 g/t Au over 1 m**



2023 Soil Sampling Program **2,100 samples** taken

Interpolated Arsenic in Soil via pXRF





# GOLDEN BUFFALO ACQUISITION

Relevant Gold Buys Out Option Completing Acquisition of 700 Leased Hectares at its Flagship Golden Buffalo Project



## DEAL HIGHLIGHTS:

- **88 BLM** claims (**700 hectares**) acquired in the heart of Golden Buffalo
- **\$16.2M** in calendar-driven payments eliminated
- Relevant Gold team strengthened by addition of GBMC principals Jerome Hutchison and Jacob Tyra



**Jerome Hutchison**  
Community Advisor,  
Site Supervisor

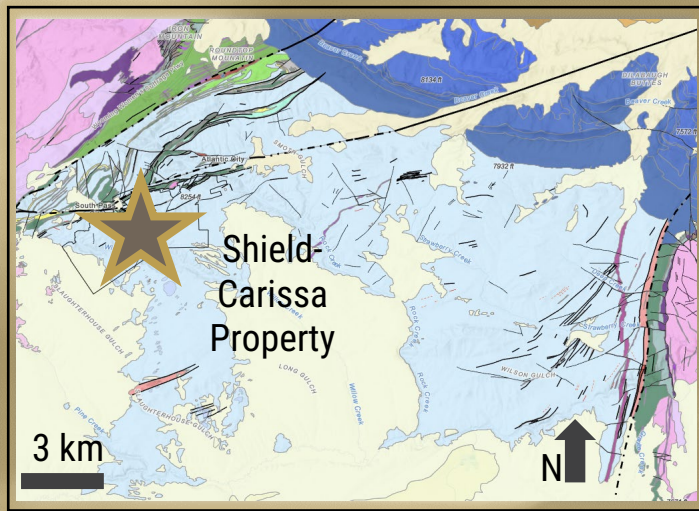


**Jacob Tyra**  
Operations Manager





# SHIELD-CARISSA HIGHLIGHTS



## HIGH-GRADE

Au 18.9 g/t

Ag 486 g/t

RGC rock chip sample



## DISTRICT SCALE

>1,557

Hectares

Active BLM lode mining claims



## SHEAR HOSTED

3

TARGET ZONES

2.7 km

SHEAR ZONE TREND

Parallel to historic Carissa Mine trend

B&H and SHIELDS MINES

2 HISTORIC MINES ON RGC CLAIMS



ADJACENT TO HISTORIC CARISSA MINE

MOST PROLIFIC



Est. 200,000 oz

HISTORIC REGIONAL PRODUCTION



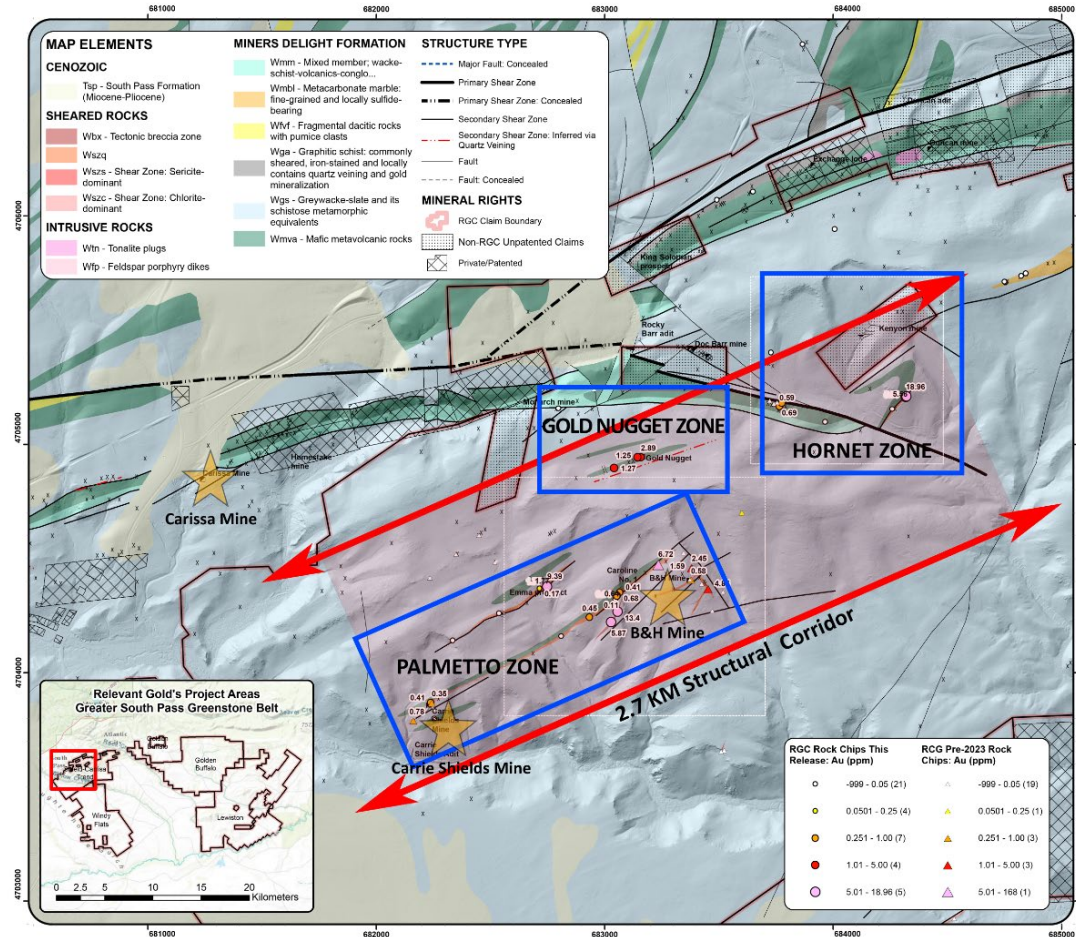


# SHIELD-CARISSA 2023 RESULTS

## Overview

### Program highlights & results:

- Multiple high-grade gold samples in outcrop including **18.9 g/t gold** and **486 g/t silver**
- **35%** of samples reported anomalous gold (>0.1 g/t Au)
- **3** distinct target zones: Hornet, Gold Nugget & Palmetto
- Connected the mineralized structure between both the B&H and Shields historic mines
- Identified multiple “wedges” of mafic rocks associated with shear structures and gold mineralization



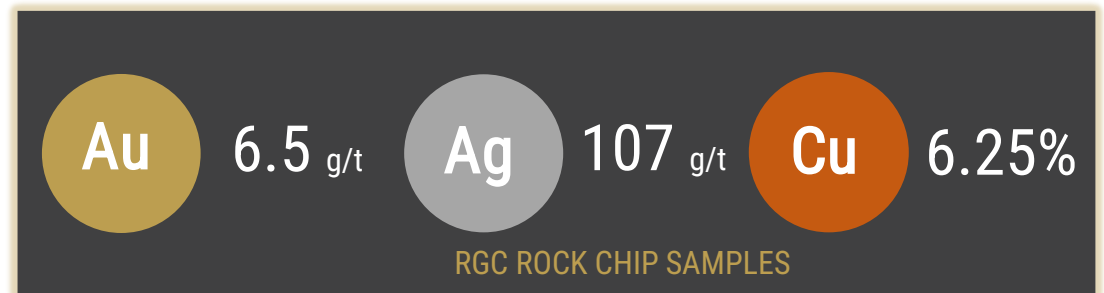
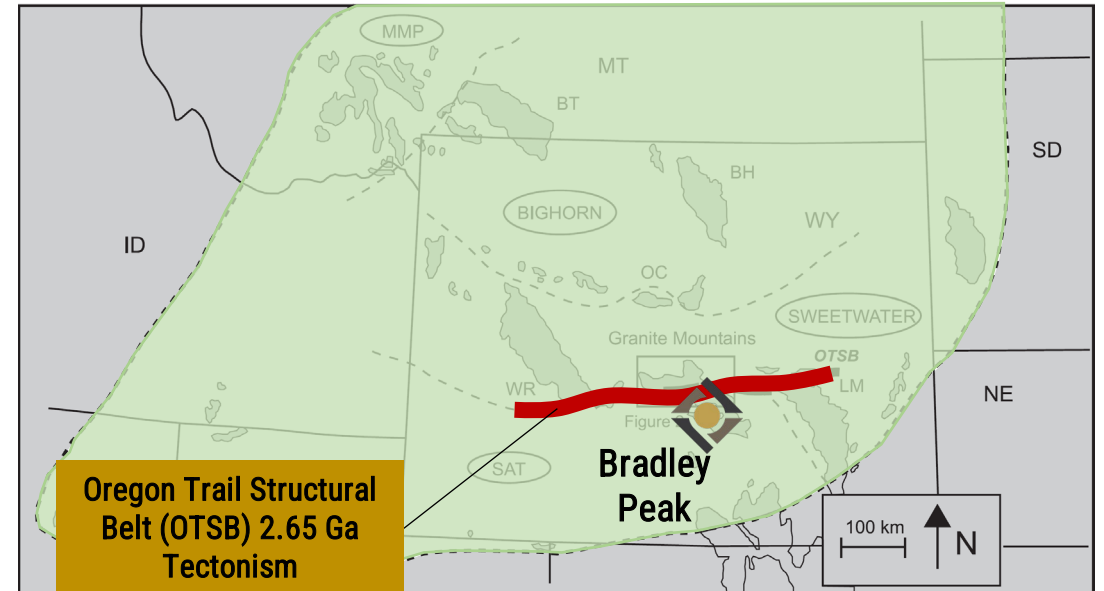
Gold Concentration in Rock Chips  
Shield - Carissa Project  
Fremont County, Wyoming





# BRADLEY PEAK GOLD CAMP

	Criteria	Description
✓	Structural Setting	<ul style="list-style-type: none"> <li>Major shear zones</li> <li>Brittle-ductile transition</li> <li>Complex re-folded folds</li> <li>Rheologic contrasts</li> </ul>
✓	Host Rock	<ul style="list-style-type: none"> <li>Amphibolites &amp; greenstones</li> <li>Carbonate facies Iron Formation</li> <li>Maifc and felsic intrusives</li> <li>Komatiites</li> </ul>
✓	Alteration	<ul style="list-style-type: none"> <li>Chlorite, Carbonate, Sericite, Epidote, Sulfidation &amp; Silica</li> </ul>
✓	Geochemistry	<ul style="list-style-type: none"> <li>Au, Ag, As, Bi, Cu, Sb, Pb &amp; Zn</li> </ul>
✓	Mineralization	<ul style="list-style-type: none"> <li>Orogenic and intrusion-related gold mineralization systems</li> <li>Confirmed sulfide assemblage related to mineralization</li> </ul>
✓	Land Position	<ul style="list-style-type: none"> <li>100% RGC ownership of 281 contiguous unpatented active BLM claims</li> <li>Rural sub-mountainous terrane</li> <li>~50 miles from well established town and infrastructure</li> </ul>
✓	Scalable Opportunity	<ul style="list-style-type: none"> <li>Multiple district-scale targets</li> <li>RGC controls 98% of the entire greenstone belt camp</li> </ul>
✓	Permitting	<ul style="list-style-type: none"> <li>Streamlined State +/- Federal permitting pathway</li> </ul>

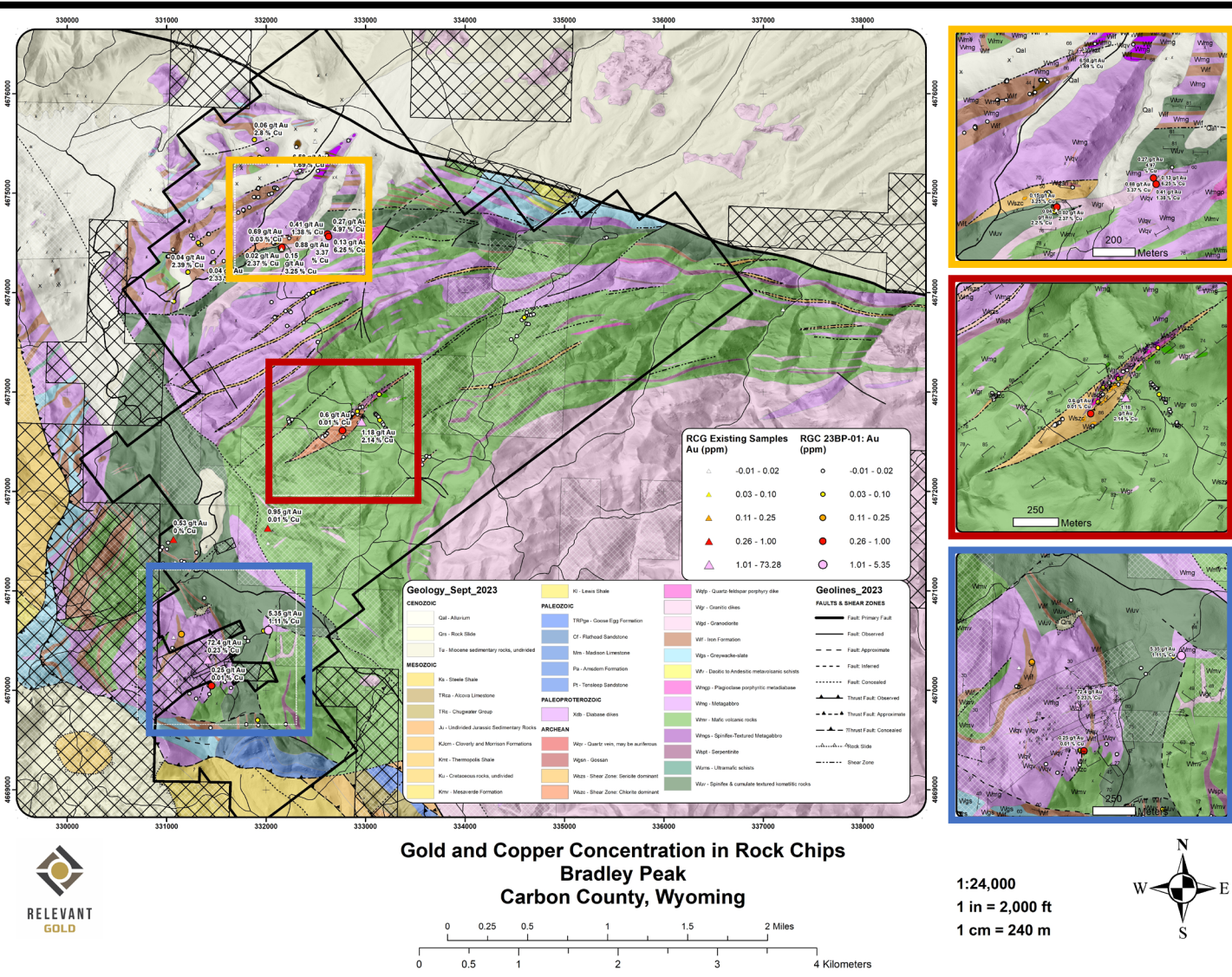


# BRADLEY PEAK 2023 RESULTS

## Overview

- ◆ Mapping and sampling identified multiple new district-scale targets
  - ◆ 30 km of *newly* mapped shear zones
  - ◆ Identified new Porphyry intrusive rocks
  - ◆ Confirmed intrusive and orogenic style mineralization
- ◆ Sampled 5.3 g/t gold, 107 g/t silver, and 6.25% copper in outcrop
- ◆ 15% of all rock samples reported gold
- ◆ 3 target zones identified:
  - Kortes, Apex, and Deserted Treasure

READ THE RELEASE



# Magnetic Survey – Vertical Derivative

## Bradley Peak Camp

**\*\*Select highlighted assays presented See RGC website for more details and 43-101 reports\*\***

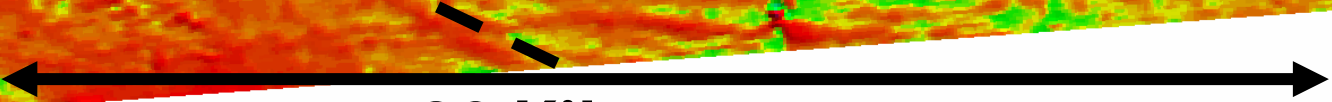
6.58 g/t Au  
107 g/t Ag  
6.25% Cu

1.2 g/t Au  
2.14% Cu

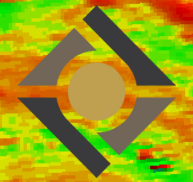
72 g/t Au  
5.3 g/t Au  
1.1% Cu

**Legend**

- Major Archean Structure
- ★ High-grade Au/Cu rock assays
- ☆ High-grade Au drilling assays



**20 Kilometers**





A promotional image for Relevant Gold. Two men wearing orange hard hats and safety vests are in the foreground. The man on the left is smiling and wearing sunglasses. The man on the right has a mustache and is also wearing sunglasses. In the background, there is a mining site with a drilling rig and a pickup truck under a blue sky with scattered clouds. A large, semi-transparent 'X' is overlaid on the background.

# JOIN US FOR THE NEXT BIG DISCOVERY

[WWW.RELEVANTGOLDCORP.COM](http://WWW.RELEVANTGOLDCORP.COM)

[@RELEVANTGOLDCORP](https://twitter.com/RELEVANTGOLDCORP)



**FOR QUESTIONS & INFORMATION, PLEASE CONTACT:**

[investorrelations@relevantgoldcorp.com](mailto:investorrelations@relevantgoldcorp.com)  
+1-763-760-4886

**RELEVANT GOLD**

TSXV:RGC | OTCQB:RGCCF