



RELEVANT

GOLD

TSXV:RGC
OTCQB:RGCCF



DEFINING A NEW MEGA-DISTRICT IN WYOMING WITH ABITIBI-SCALE POTENTIAL



CAUTIONARY STATEMENT

This presentation contains certain statements that constitute forward looking information within the meaning of applicable securities laws. These statements relate to future events of Relevant Gold Corp. (“Relevant” or “the Company”). Any statements that express or involve discussions with respect to predictions, expectations, beliefs, plans, projections, objectives, assumptions or future events or performance (often, but not always, using words or phrases such as “seek”, “anticipate”, “plan”, “continue”, “estimate”, “expect”, “forecast”, “may”, “will”, “project”, “predict”, “potential”, “targeting”, “intend”, “could”, “might”, “should”, “believe”, “outlook” and similar expressions) are not statements of historical fact and may be forward looking information. Forward looking information in this presentation includes, but is not limited to, statements with respect to successfully consolidating further land packages, Relevant’s ability to raise sufficient capital to fund exploration programs and its obligations under property agreements, seek a listing on a recognized stock exchange, drilling plans, financing success, discovery and production of minerals, metal prices and currency exchange rates, timing of technical reports and drill results, corporate and technical objectives, permitting success and relationships with stakeholders.

Forward looking information involves known and unknown risks, uncertainties and other factors which may cause the actual results, performance or achievements of the Company to be materially different from any future results, performance or achievements expressed or implied by the forward-looking information. Such risks include, among others, the inherent risk of the mining industry; adverse economic and market developments; the risk that the Company will not be successful in completing additional acquisitions; risks relating to the estimation of mineral resources; the possibility that the Company’s estimated burn rate may be higher than anticipated; risks of unexpected cost increases; risks of labour shortages; risks relating to exploration and development activities; risks relating to future prices of mineral resources; risks related to work site accidents, risks related to geological uncertainties and variations; risks related to government and community support of the company’s projects; risks related to global pandemics and other risks related to the mining industry. The Company believes that the expectations reflected in such forward-looking information are reasonable, but no assurance can be given that these expectations will prove to be correct and such forward-looking information should not be unduly relied upon. These statements speak only as of the date of this presentation. The Company does not intend, and does not assume any obligation, to update any forward-looking information except as required by law.

This document does not constitute an offer to sell, or a solicitation of an offer to buy, securities of the Company in Canada, the United States or any other jurisdiction. Any such offer to sell or solicitation of an offer to buy the securities described herein or during the presentation will be made only pursuant to subscription documentation between the Company and prospective purchasers. Any such offering will be made in reliance upon exemptions from the prospectus and registration requirements under applicable securities laws, pursuant to a subscription agreement to be entered into by the Company and prospective investors.

The scientific and technical contents of this presentation have been approved by Mr. Brian C. Lentz, CPG, Chief Exploration Officer of the Company, who is a “Qualified Person” as defined by Canadian National Instrument 43-101 (Standards of Disclosure for Mineral Projects). Mr. Lentz is not independent of the Company.





STRONG VALUE PROPOSITION

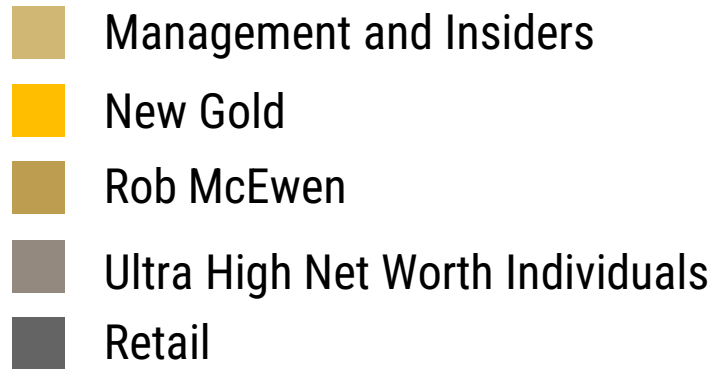
- ✓ PROVEN TEAM OF VALUE CREATORS WITH DEEP HUMAN CAPITAL INFRASTRUCTURE
- ✓ UNLOCKING A POTENTIAL MEGA-DISTRICT; ABITIBI-LIKE POTENTIAL
- ✓ VERY LARGE LAND POSITION; MULTIPLE PERMITTED DRILL TARGETS
- ✓ HIGH-GRADE GOLD AT SURFACE; ASSAYS UP TO 160+ g/t Au
- ✓ HIGH-GRADE GOLD AT DEPTH; DRILLED 83.8 g/t Au OVER 1 M AT GOLDEN BUFFALO
- ✓ 1,560 M LEWISTON DRILL PROGRAM CUT GOLD IN 10 OF 11 HOLES
- ✓ 50+ KM OF PROSPECTIVE ABITIBI-STYLE SHEAR ZONES ACROSS 5 PROJECTS
- ✓ PIPELINE OF DISCOVERY OPPORTUNITIES IN MINING-FRIENDLY WYOMING





CORPORATE STRUCTURE

MAJOR SHAREHOLDERS: (as of 9/1/2023)

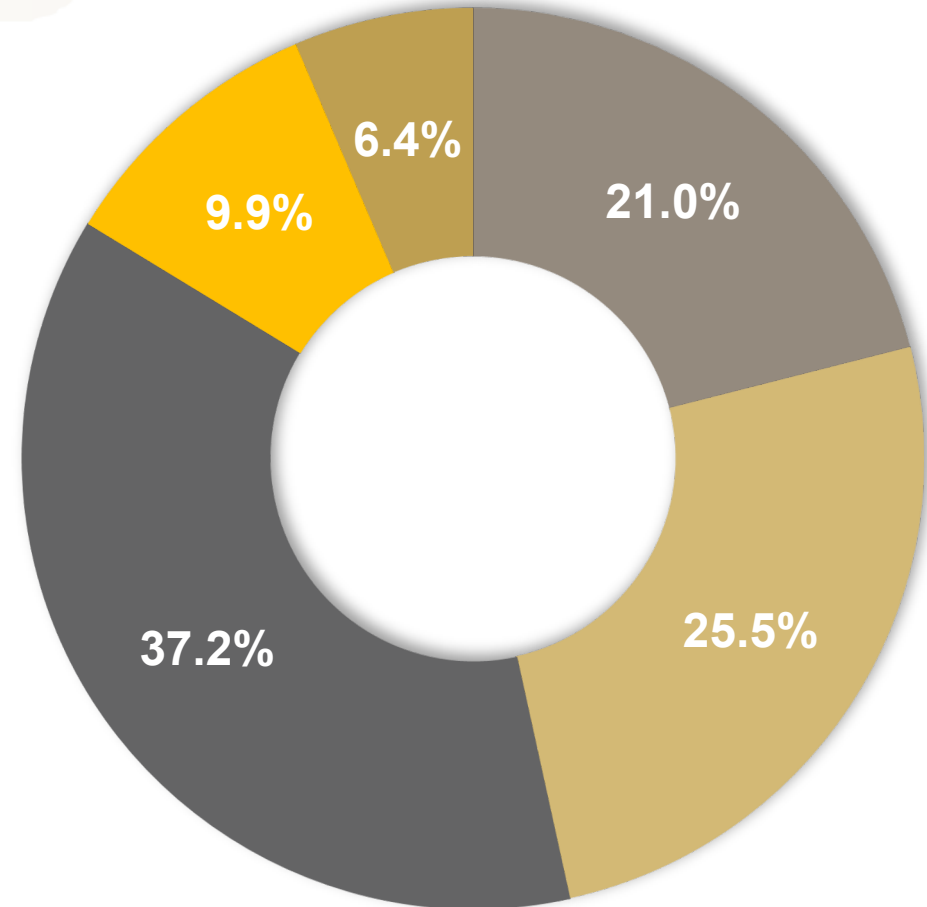


SHARE BREAKDOWN:

Issued and Outstanding:	62,291,226
Reserved for Issuance:	21,896,240*

* Includes:

- 12,000,000 founders' warrants @ \$0.13 (expire 2025)
- 3,750,000 management/board options @ \$0.35 (expire 2027)
- 6,146,240 warrants @ \$0.35 (expire 2026)



MEET THE TEAM

BOARD OF DIRECTORS



INDEPENDENT DIRECTOR

Dr. Peter Megaw, PhD.
40+ Years Experience
PhD., Economic Geology

Cofounder, MAG Silver Corp.



INDEPENDENT DIRECTOR

Sarah Weber
20+ Years Experience
P. Geo / MBA

CEO, C3 Alliance Corp.



INDEPENDENT DIRECTOR

Ronald L. Parratt
40+ Years Experience
M.Sc. Economic Geology

Cofounder, Auxex Ventures, Inc.



DIRECTOR, CEO

Rob Bergmann
15+ Years Experience
B.Sc. Geology

Founder, Relevant Gold Corp.



DIRECTOR, CXO

Brian Lentz
15+ Years Experience
B.Sc. Geology / P. Geo

Founder, Relevant Gold Corp.

MANAGEMENT



Mahesh Liyanage
RGC CFO



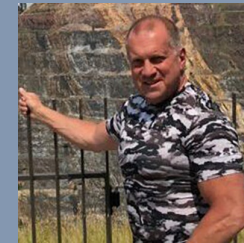
Sam Siebenaler
VP Corporate Dev.



Kristopher Jensen
Corporate Comms. Mgr.



Dr. Dean Peterson, PhD
Technical Advisor



Dr. Thomas Campbell, PhD
Technical Advisor



Dr. Kevin Chamberlain, PhD
Technical Advisor

FULL BIOS CAN BE FOUND AT [RELEVANTGOLDCORP.COM](https://relevantgoldcorp.com)

RELEVANT GOLD
TSXV:RGC | OTCQB:RGCCF



MINERALS ARE THE FUTURE™

Our Vision For The Next Generation



Unlocking A Potential Mega-District

HOW WE'RE EQUIPPED FOR SUCCESS

Innovative exploration team focused on multi-million ounce orogenic shear-hosted Gold and Silver discoveries in the USA

Backed by science, proven ability to execute, exploration and discovery specialists, deep market knowledge

3 district scale (37 km²) near surface, high grade properties in the second most favorable mining jurisdiction globally* Fraser Inst. Report on PPI score for global exploration/mining investment

HOW OUR APPROACH SETS US APART

NEW EYES ON OLD ROCKS™

Scientific foundation opening up a new Abitibi like district in WY

Access to proprietary and proven prospect generation AI

Advanced modern exploration group leads technical development

Ability to rapidly advance early stage prospects to drill testing

Extensive background in USA exploration, permitting, environmental and mining compliance



RELEVANT GOLD



GRADE IS KING

Limiting Risk With Massive Potential Reward



ARCHIE'S RULE

To be economic, a deposit must have a recovered value of **2X** the all-in operating costs

WHY THIS MATTERS

Exploration in the USA requires discipline around Archie's Rule as high-grades are needed to overcome the higher costs of exploring in the USA

OUR FOCUS

► *High-grade district-scale precious metal opportunities*



TARGET

Orogenic, shear-hosted deposits have the second most identified Au deposits in excess of 10 Million ounces

Orogenic, shear-hosted deposits can host very high grades, allowing profitable operations in a variety of market conditions





OPPORTUNITY OF SCALE

The Abitibi Gold Belts; Prolific Orogenic Shear Zone Hosted Gold Deposits, > 200 Moz

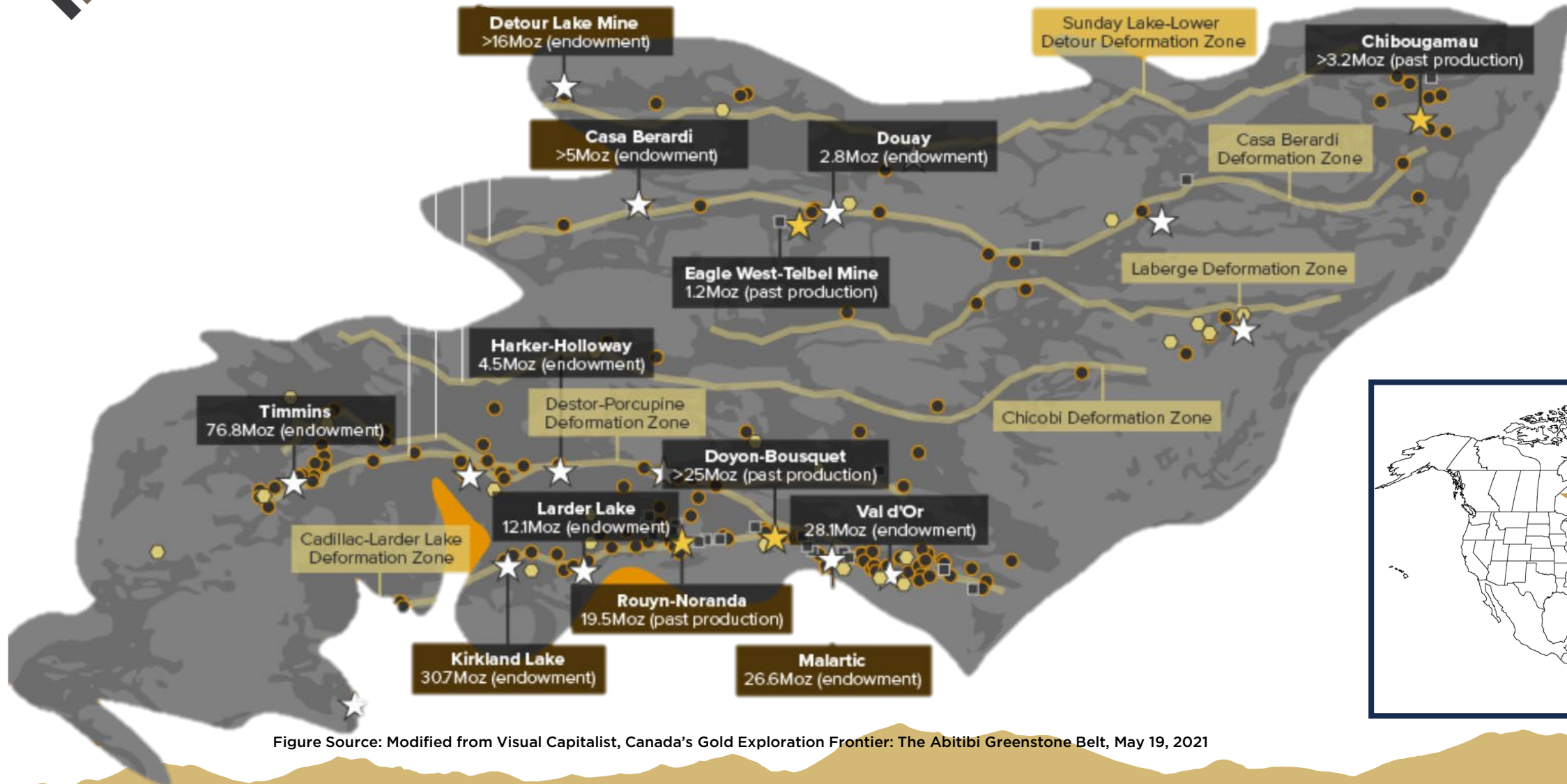


Figure Source: Modified from Visual Capitalist, Canada's Gold Exploration Frontier: The Abitibi Greenstone Belt, May 19, 2021



TARGET: OROGENIC GOLD = 1 BILLION OUNCES

HOW OROGENIC GOLD IS FORMED

Orogenic gold deposits account for about 1/3 of the world's gold production. Here is how they formed:

1

SOURCE: Metal enriched source fluid deep in the earth's subsurface

2

PATHWAY: Major, deep rooted fault structures formed, creating pathways that allowed these gold enriched fluids to rise

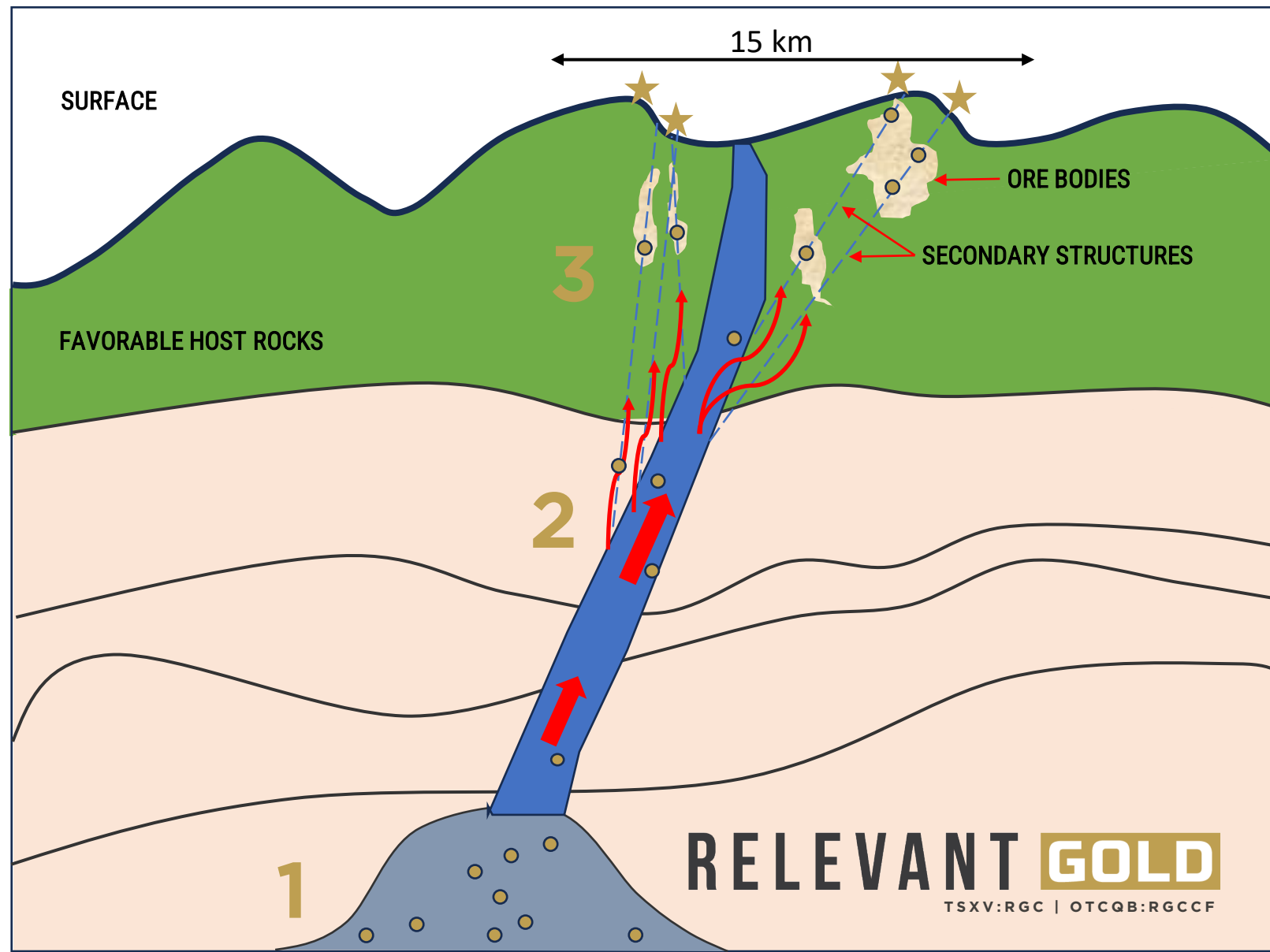
3

TRAP: Gold-bearing fluids become trapped in secondary structures of favorable host rocks, allowing the gold to precipitate out.

98%

of all the orogenic gold produced in the Timmins, Kirkland Lake, and Hemlo camps in the Abitibi (106.25 Moz) was found in secondary structures within 7 km of the primary fault structure (i.e. Destor Porcupine Fault).²

1. Frimmel, H. E. Earth's continental crustal gold endowment. *Earth Planet. Sci. Lett.* **267**, 45–55 (2008)
2. Peterson, Dean. Ph.D. Dissertation, 2001

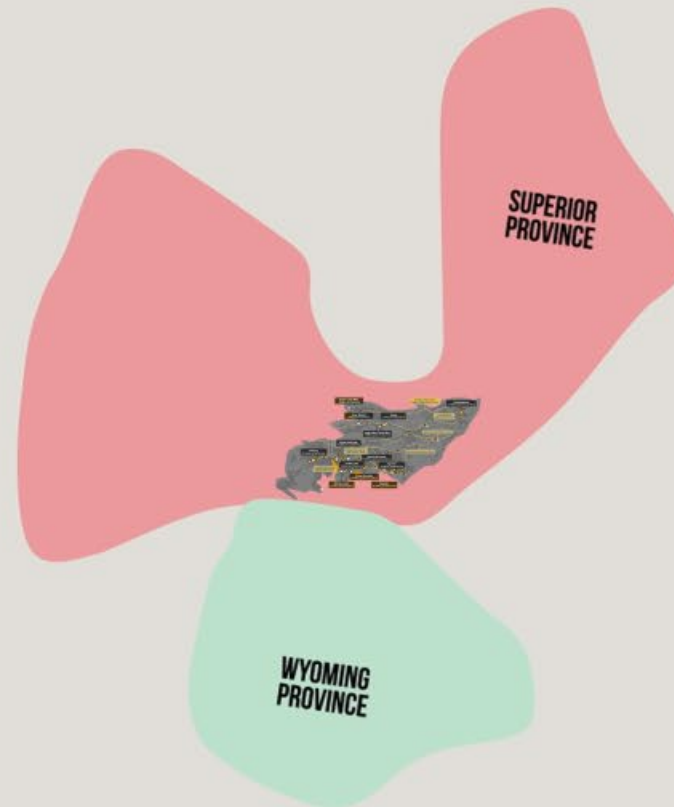


RELEVANT GOLD

TSXV:RGC | OTCQB:RGCCF



TSXV:RGC
OTCQB:RGCCF

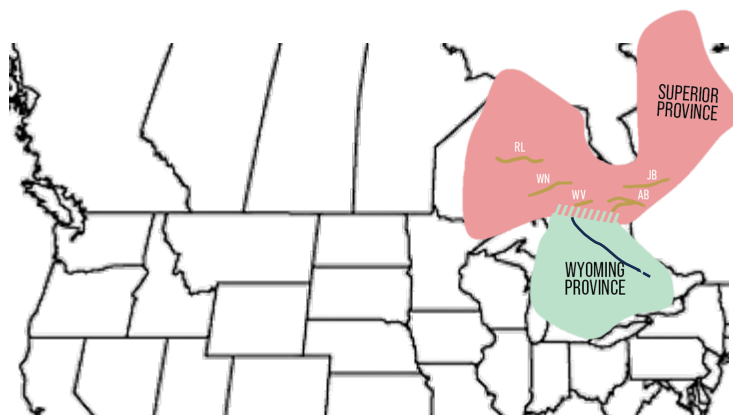


ABITIBI THESIS

SCAN FOR ANIMATION

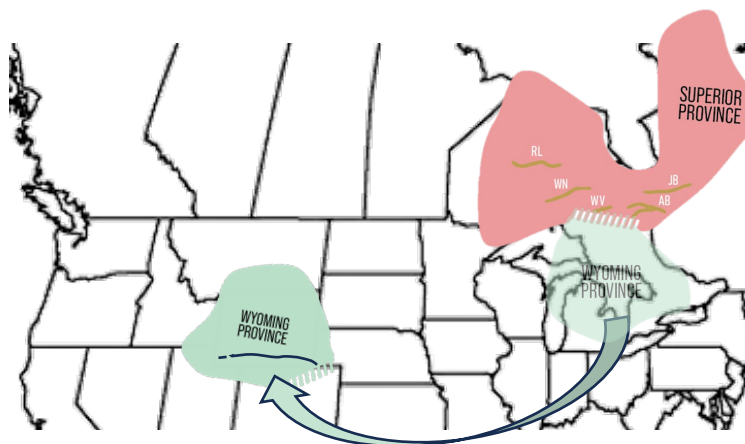


~2.65 BILLION YEARS AGO



The Wyoming Province and the Superior Province (Abitibi) were connected when gold mineralization occurred. (Chamberlain et. al. 2006)

~2.1 BILLION YEARS AGO



Continental rifting caused the Wyoming Province to begin to separate, rotate, and move to its current location over many millions of years.

MODERN DAY



Relevant Gold applied these insights to secure the most prospective ground in Wyoming and is pursuing the next great orogenic gold discovery.



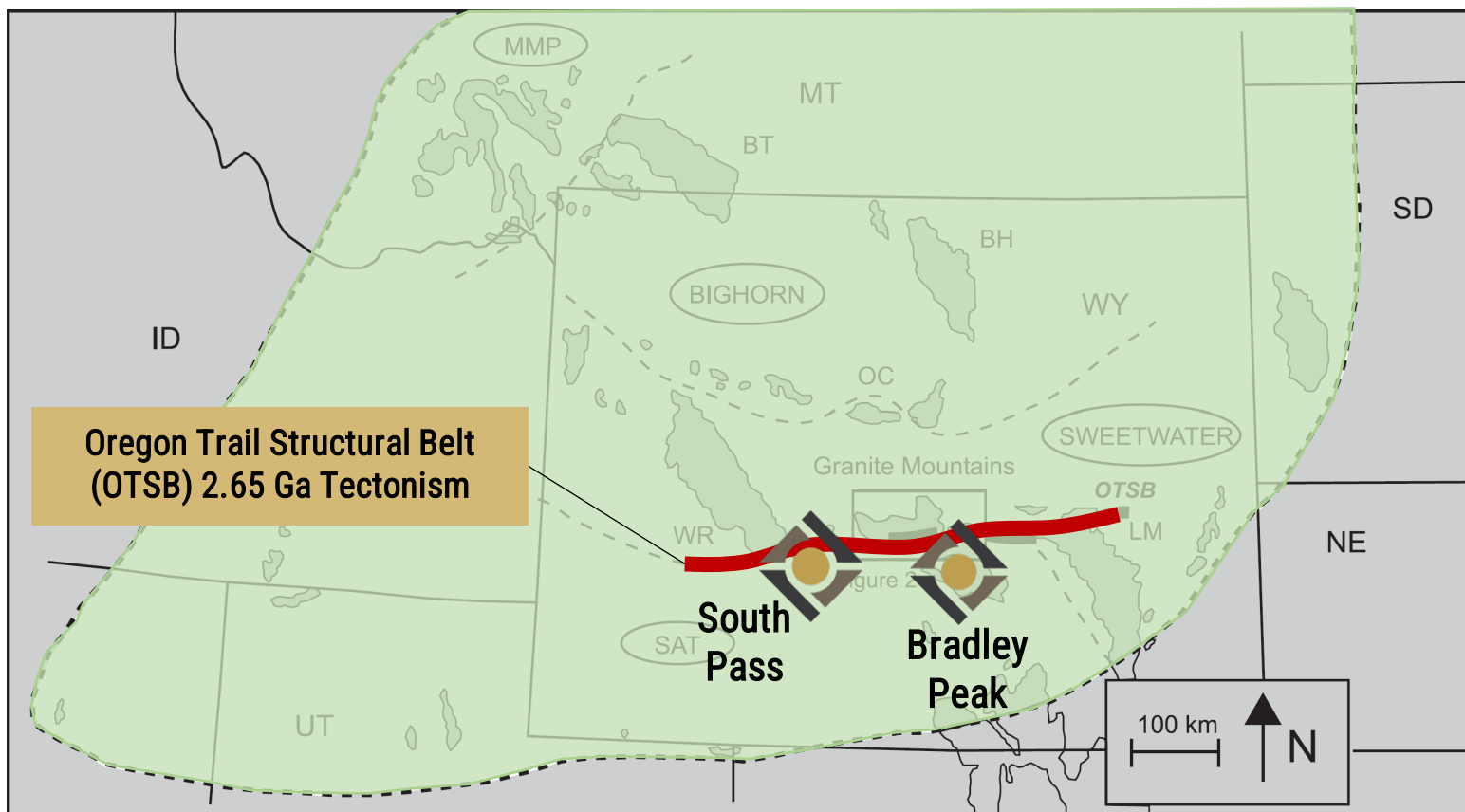


WYOMING

THE UNEXPLORED ABITIBI GOLD BELT



RELEVANT GOLD CAMPS | NEW ABITIBI



*Figure modified from Chamberlain et. al. 2006

TECHNICAL SUMMARY

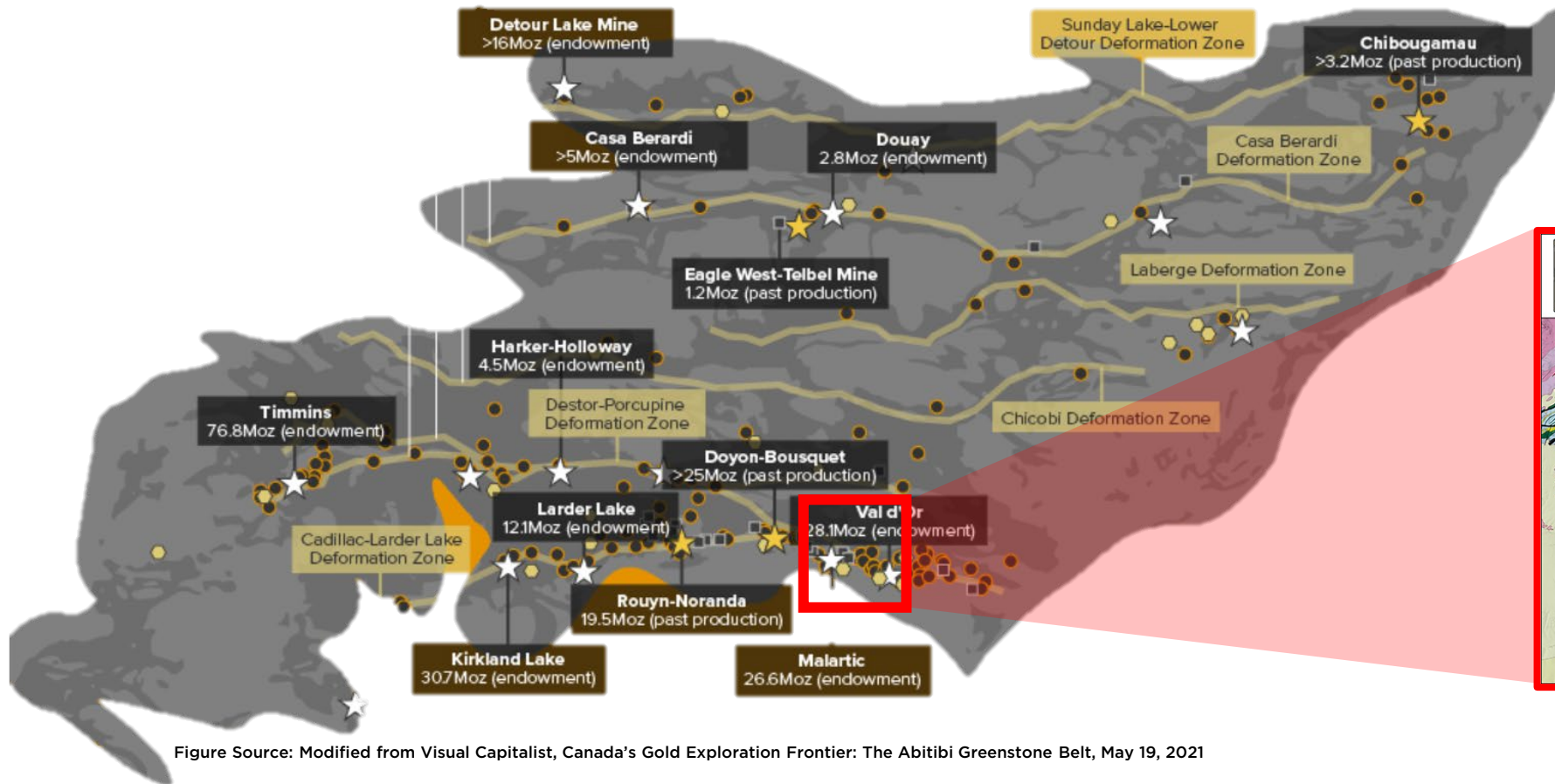
- ◆ Craton scale structural zone
- ◆ Same age and orientation as belts in Superior Province
 - ◆ Destor Porcupine, Cadillac & Larder Lake
- ◆ Cross-cutting rock types known to host Orogenic and VMS style mineralization
- ◆ Historic gold mines throughout the OTSB across the Wyoming Province





CAMP-SCALE OPPORTUNITY

The South Pass Gold Camp is comparable in size to the Canadian Malartic area in the Abitibi Gold Belts



SOUTH PASS GOLD CAMP

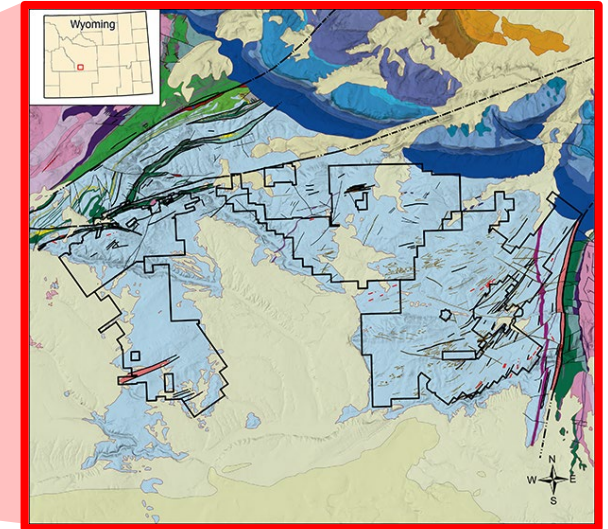


Figure Source: Modified from Visual Capitalist, Canada's Gold Exploration Frontier: The Abitibi Greenstone Belt, May 19, 2021





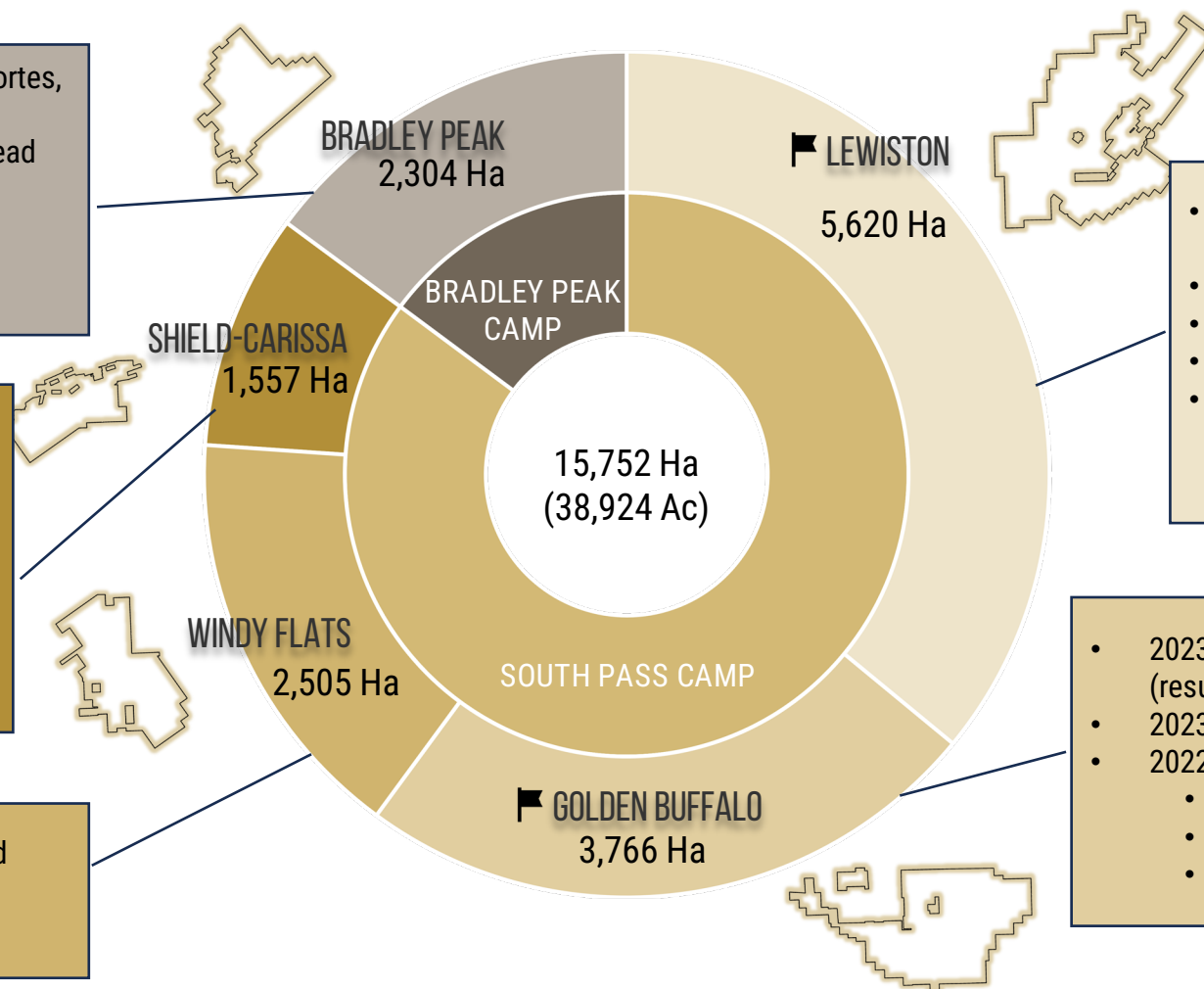
PORTFOLIO AT A GLANCE

2 gold camps, 5 district-scale projects

- 2023 exploration identified **3 target zones**: Kortès, Apex, Deserted Treasure
- **30 km** of newly mapped shears with widespread gold and copper mineralization
- Rock chips up to **5.3 g/t gold** at the Deserted Treasure Zone, and **107 g/t silver** and **6.25% copper** at Kortès Zone.

- 2023 exploration identified **2.7 km structural corridor** encompassing **3 target zones**: Palmetto, Gold Nugget, and Hornet
- Rock chips up to **9.3 g/t Au**, **13.4 g/t Au**, and **486 g/t Ag** (Palmetto zone); **18.9 g/t Au** and **5.5 g/t Au** (Hornet zone); **2.9 g/t Au** (Gold Nugget zone)

- Prominent **~3km x 0.5 km** shear zone identified during 2022 mapping program
- Rock chip and soil sampling planned for 2024



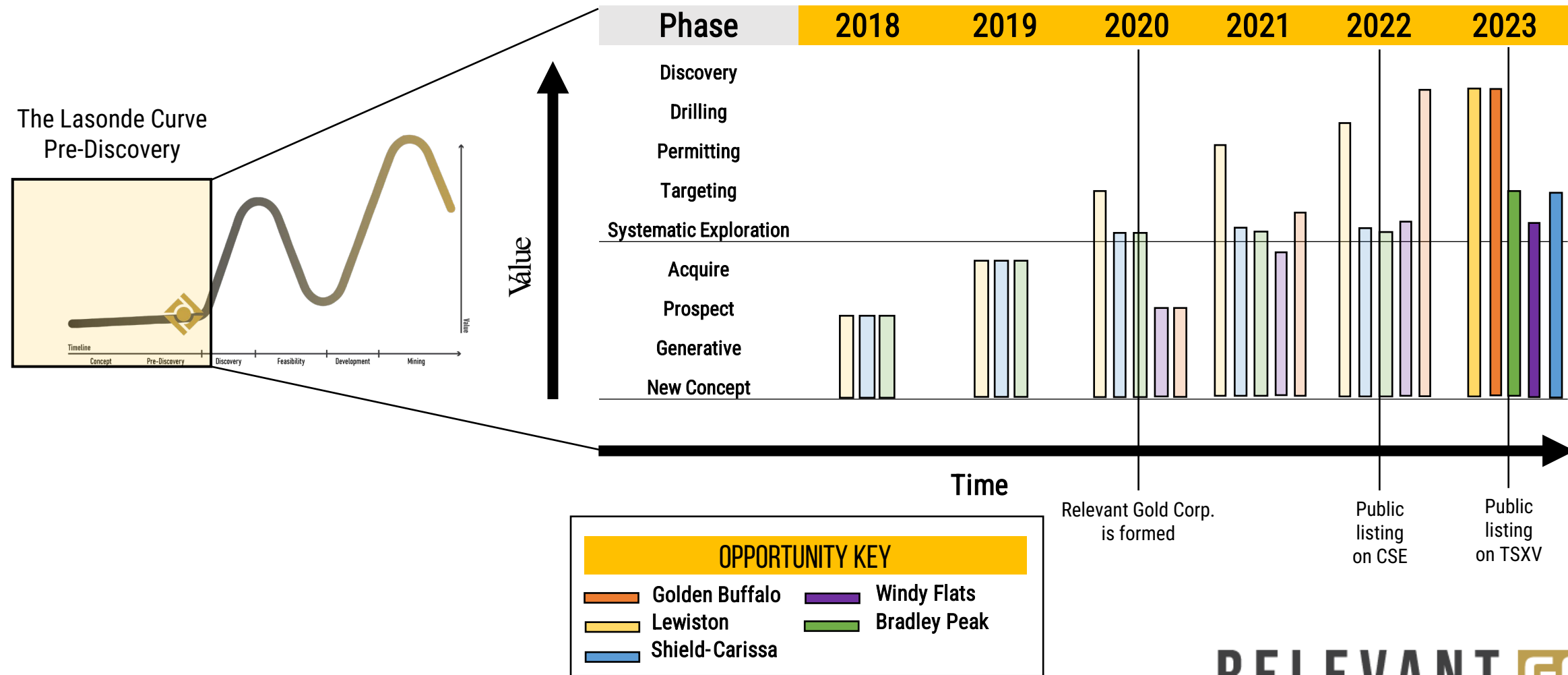
- 2023 Drilled **1,560 m** into Heavy Hand target cutting gold in **10 of 11** holes
- Identified **10+ km** of orogenic shearing
- Gold assays highlighted by **62.4 g/t Au**
- Developed **6** high-grade drill targets
- **Significant** shear-hosted alteration, veining, and remnant sulfides intersected to depths up to 200m

- 2023 collected more than **2,100** soil samples (results pending)
- 2023 rock chip sampling (results pending)
- 2022 drilled ~3,500m into GBSZ
 - **54%** of holes returned anomalous gold
 - Top intercept: **83.8 g/t Au** over 1 m
 - Rock chip assays up to **160 g/t Au**

Flagship Projects



APPROACH | SYSTEMATIC EXPLORATION





PROOF OF CONCEPT

Orogenic Gold Checklist; RGC district-scale exploration checks all the boxes

	CRITERIA	DESCRIPTION
✓	Structural Setting	<ul style="list-style-type: none">• Major east-west Archean fault structures cutting across WY• Mineralized secondary shear zones• Brittle-ductile transition• Complex re-folded folds
✓	Host Rock	<ul style="list-style-type: none">• Amphibolites & greenstones• Greywackes• Carbonate facies iron formation• Rheologic contrasts
✓	Alteration	<ul style="list-style-type: none">• Chlorite, Carbonate, Sericite, Epidote, Sulfidation, Silica
✓	Geochemistry	<ul style="list-style-type: none">• Au, Ag, As, Bi, Cu, Sb, Pb, Zn
✓	Mineralization	<ul style="list-style-type: none">• Orogenic gold + VMS style mineralization systems• High-grade and visible orogenic gold proven (160 g/t Au)
✓	Land Position	<ul style="list-style-type: none">• 5 district-scale assets across 150 km Archean belt• Big enough to host the largest known orogenic type deposits• Well established infrastructure, access, water, and power
✓	Scalable Opportunity	<ul style="list-style-type: none">• Connection to Abitibi during gold mineralization (2.65 ba)• Multiple high-grade targets with Abitibi-scale potential
✓	Permitting	<ul style="list-style-type: none">• Streamlined State and Federal permitting pathway• Multiple exploration permits in hand• Wyoming has deep roots in mining and natural resources



*2020 Trench sample collected by Golden Buffalo Mining Company





NEAR-TERM CATALYSTS

2023 Exploration sought to **extend the proof of concept** achieved at Golden Buffalo to Lewiston and **demonstrate the district-scale potential** of multiple Abitibi-style orogenic gold systems in South Pass.

2023 EXPLORATION SUCCESSES

CORE DRILLING

First-ever core drilling program at Lewiston (1,500 m)

- ✓ **1,560 m drill program at Heavy Hand cut widespread gold mineralization in 10 of 11 holes**

TARGET REFINEMENT

Refinement of drill targets at the Golden Buffalo Shear Zone (GBSZ) and regional target development

- ✓ **Doubled the number of high-grade drill targets**

SOIL SAMPLING

Initiating regional soil samples across the South Pass Gold Camp

- ✓ **Collected 2,100 soil samples at Golden Buffalo (continuing in 2024)**

MAPPING + ROCK CHIP SAMPLING

at Golden Buffalo, Bradley Peak, and Shield-Carissa

- ✓ **Identified high-grade gold, copper and silver mineralization**

AIRBORNE GEOPHYSICS

USGS and WSGS conducting airborne geophysics across the entire property package

- ✓ **Airborne survey conducted; results under review by RGC technical team**





2023 HIGHLIGHTS AND RESULTS

RELEVANT **GOLD**



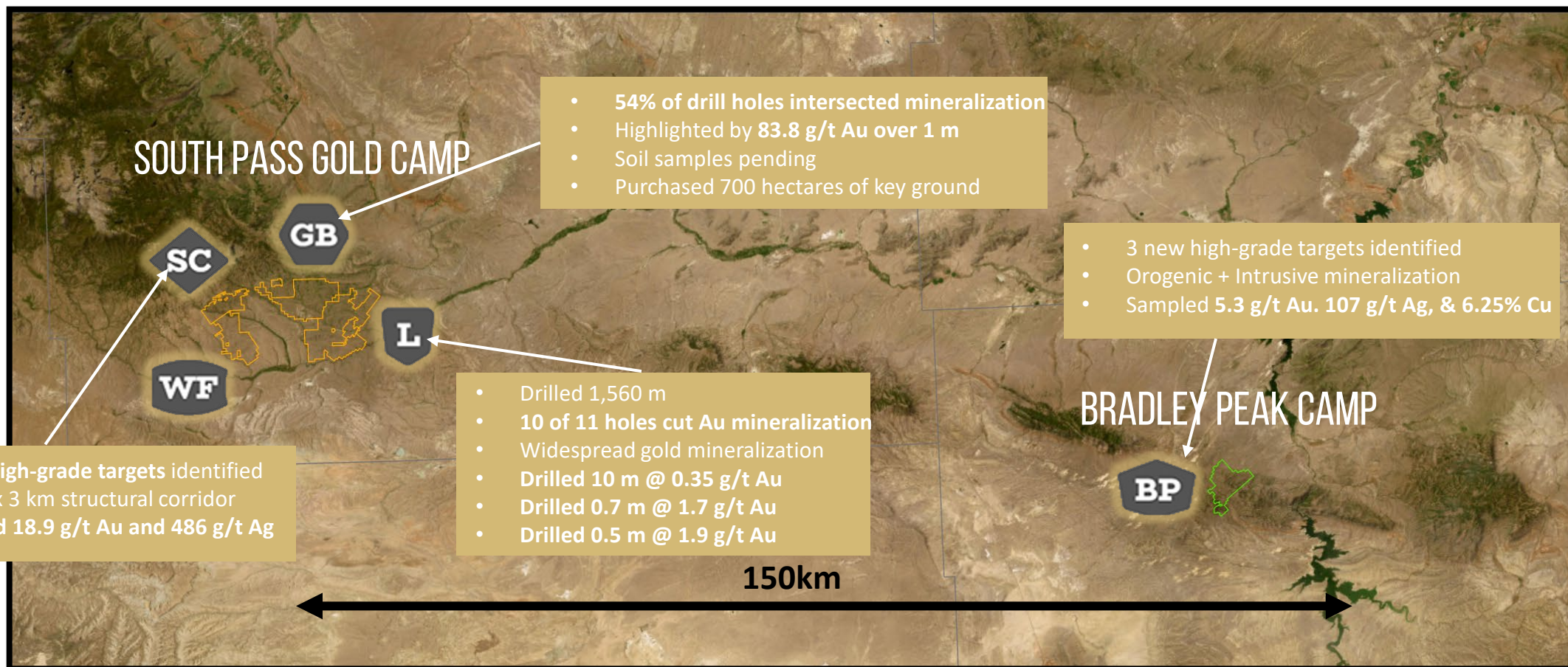
SUCCESSFUL EXECUTION

Q1 2023	Feb. 6, 2023	RGC Intersects 83.8 g/t Au over 1m at Golden Buffalo; 54% of holes intersect shear-hosted gold mineralization
	Feb. 16, 2023	RGC Reports 4.1 g/t Au in Trench Sampling at Golden Buffalo; highest grades along major contacts of GBSZ
Q2 2023	May 4, 2023	RGC Announces Non-Brokered \$3M Private Placement
	May 24, 2023	South Pass, Bradley Peak to be included in WSGS Airborne Geophysical Program adding significant value to shareholders at no additional cost
	June 8, 2023	RGC Closes Oversubscribed \$3M Non-Brokered Private Placement at ~25% premium to share price
Q3 2023	Aug. 3, 2023	RGC Lists on TSXV
	Sep. 13, 2023	RGC Commences Drilling at the Lewiston Project
	Sep. 18, 2023	RGC Adds US Listing on OTCQB
Q4 2023	Nov. 7, 2023	RGC Bradley Peak Sampling includes highlights of 5.3 g/t Au, 107 g/t Ag, and 6.25% Cu
	Nov. 16, 2023	RGC Completes 1,560 m of Drilling at Lewiston; Proved an orogenic system of scale
	Dec. 14, 2023	RGC Samples 18.9 g/t Au and 486 g/t Ag along 2.7 km of Mineralized Shear Zones at Shield-Carissa
		RGC more than doubles the number of high-grade drill targets at Bradley Peak, Shield-Carissa and Golden Buffalo (12+) Increased the number of mapped shears to 50+ km of secondary shears across RGC's 5 district-scale projects
Q1 2024	Jan. 15, 2024	RGC Buys Out Option Completing Acquisition of 700 Leased Hectares at Golden Buffalo Project, eliminating \$16.2M in calendar-driven payments
	Feb. 15, 2024	RGC Cuts Widespread Gold Mineralization at the Heavy Hand Target 10 of 11 Drill Holes Hit in First-Ever Drill Program





2023 EXPLORATION SUMMARY





LEWISTON OVERVIEW

HIGH-GRADE

- Relevant Gold rock chip samples up to **62 g/t Au + 8.1% Cu**
- Historic reported samples include **1,690 oz/ton Au**

DISTRICT-SCALE

- **~14,000** acres (5,665 ha) of BLM mining claims
- **58** acres (23 ha) of patented claims at Hidden Hand mine

SHEAR-HOSTED

- **>10km** prospective shear zone trend
- Gold hosted in vertical secondary shears

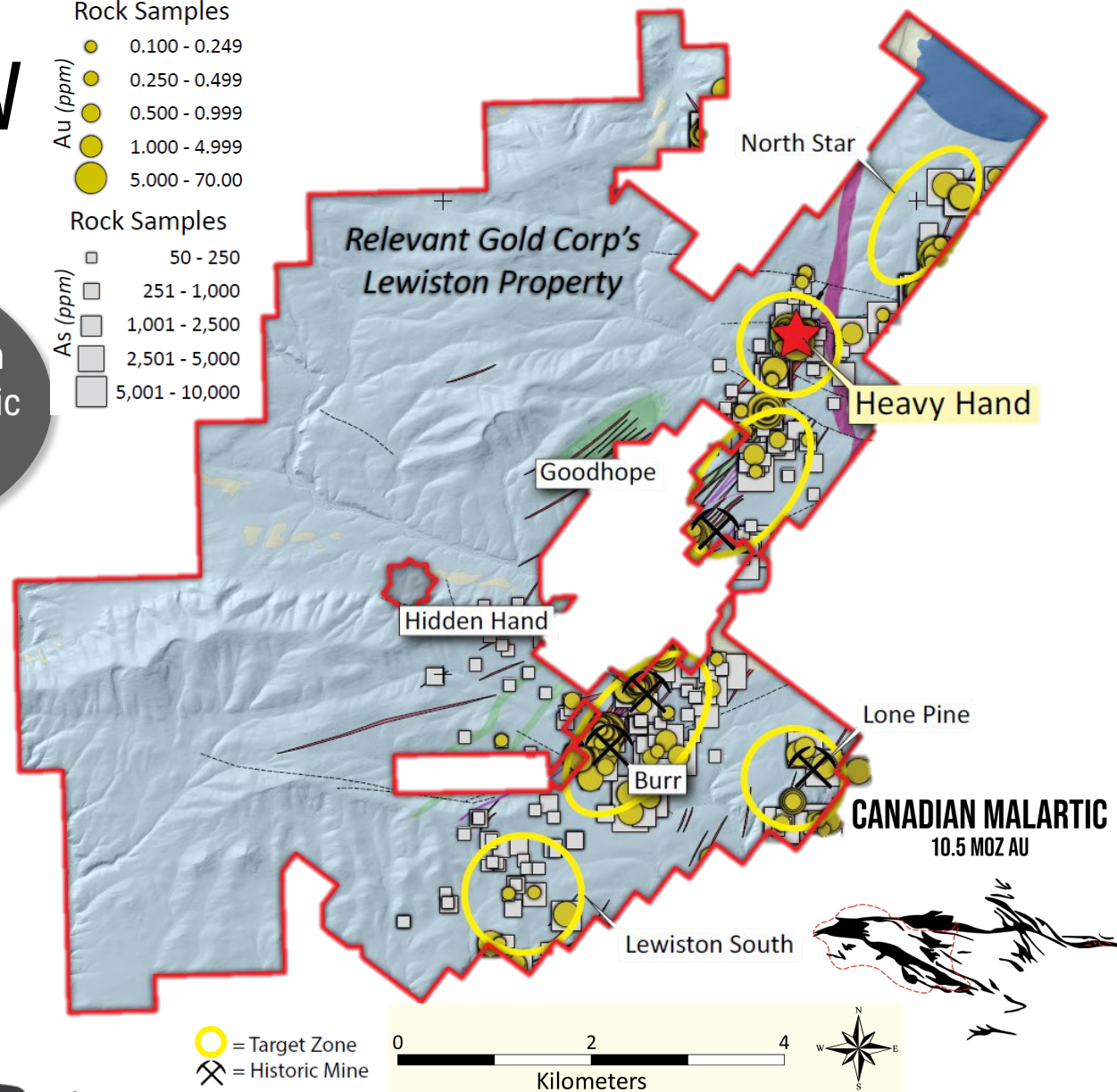
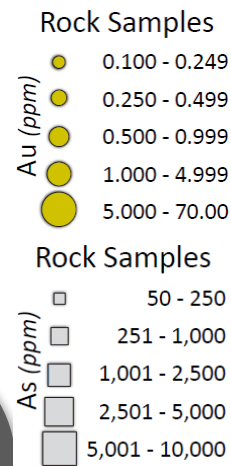
ACTIVELY DRILLING

- **2 of 6** targets permitted; 3rd permit pending
- **1,560 m** drilling exploration program (2023) intersected shear-hosted gold in **10 of 11** holes

Relevant Gold's Lewiston property includes 4 historic high-grade gold mines

Future Exploration Work:

- Phase 2 drilling
- Detailed geophysics
- Drill target refinement





HISTORIC MINING IN LEWISTON

RELEVANT GOLD

LEWISTON LAND PACKAGE

INCLUDES:

HIDDEN HAND

- 110ft shaft with 640ft of drift prior to 1926 (Henderson, 1926)
- Ore from 30ft level assay 75oz/ton
- One rich ore shoot produce several specimen grade gold samples one assayed at 3,100 oz/ton Au (Pfaff, 1978)

BURR

- First major discovery in Lewiston district multiple shafts, adits and inclines
- Historic assays include some high-grade zones from 25 to 250 oz/ton Au with some rare specimen grade at 1,690 oz/ton Au (Wyoming Industrial Journal, 1901)
- One 16ft wide zone averaged .5 oz/ton. Some sheelite reportedly ran with gold and some samples yielded 2.5 to 75% tungsten oxide

GOODHOPE

- Shallow shaft sunk on N45E trending vertical, chloritized shear zone
- 100ft trench south of the shaft with visible gold
- Grab sample assayed 1.18oz/ton gold (Housel, 1991)
- Much of the shearzone is unexplored

LONE PINE

- 470ft adit and a shaft
- Narrow shears and breccia zones were crosscut and one narrow vein assayed .61 oz/ton gold (Housel, 1991)
- One channel sample across a hidden shear zone averaged 1.6ppm Au (Housel, 1991)

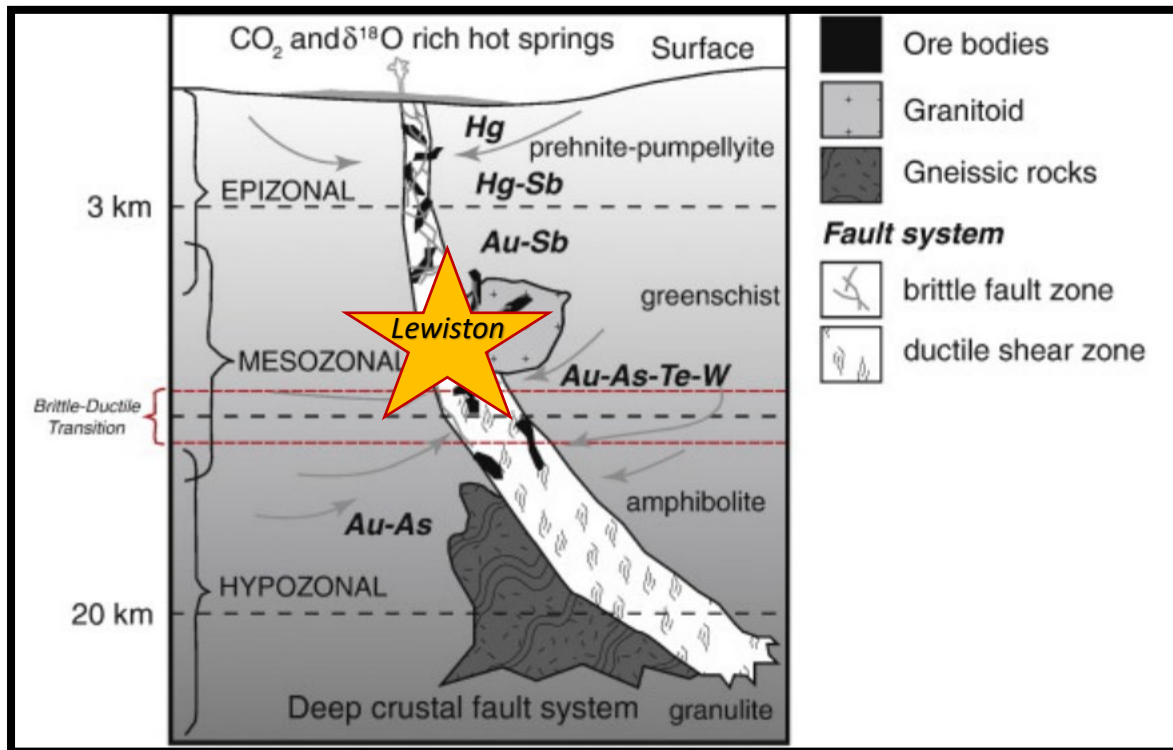




MINERALIZATION & ALTERATION MODEL

Trace Element Geochemistry

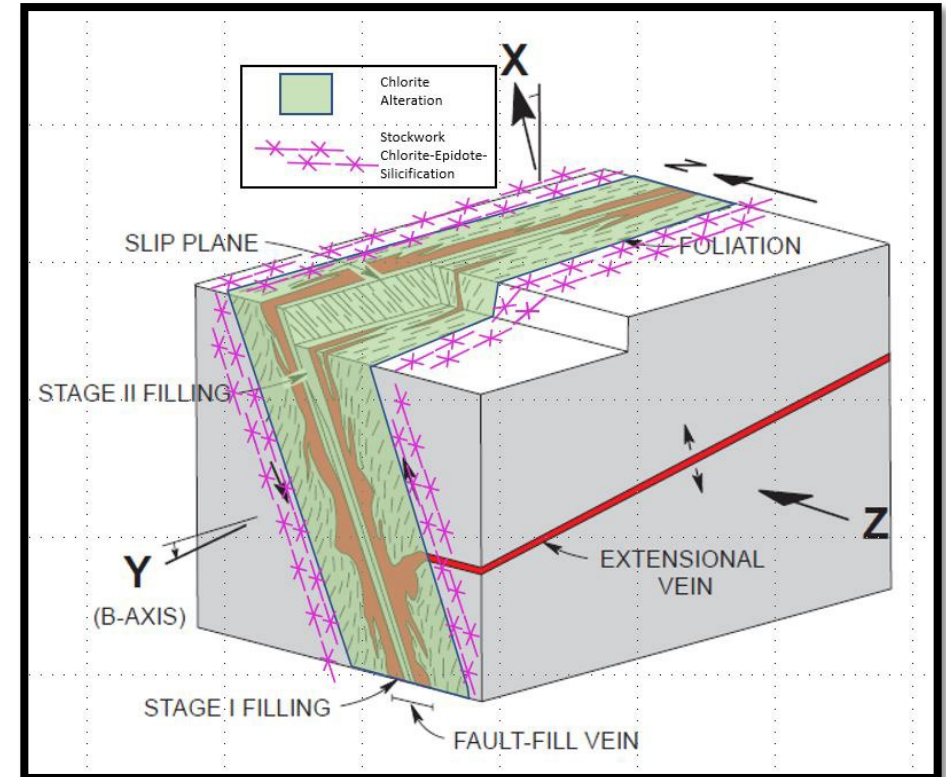
- ❖ Lewiston is in the sweet spot for an orogenic gold system
- ❖ As-Ag-Bi-Sb-Te-W
- ❖ > 50% positive correlation to gold in RGC geochemistry



Goldfarb & Groves, 2015

Alteration Assemblage (Abitibi-style)

- ❖ **Primary:** Sericite-Pyrite-Arsenopyrite
- ❖ **Proximal:** Silicification-Chlorite/Epidote
- ❖ **Distal:** Decrease in Chlorite with stock-work silicification



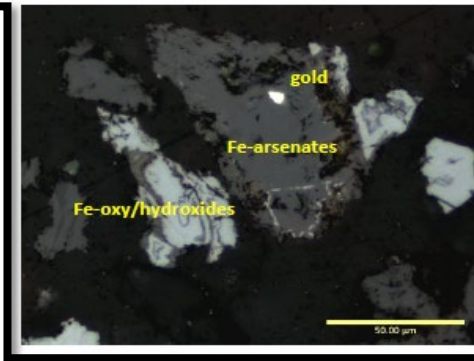
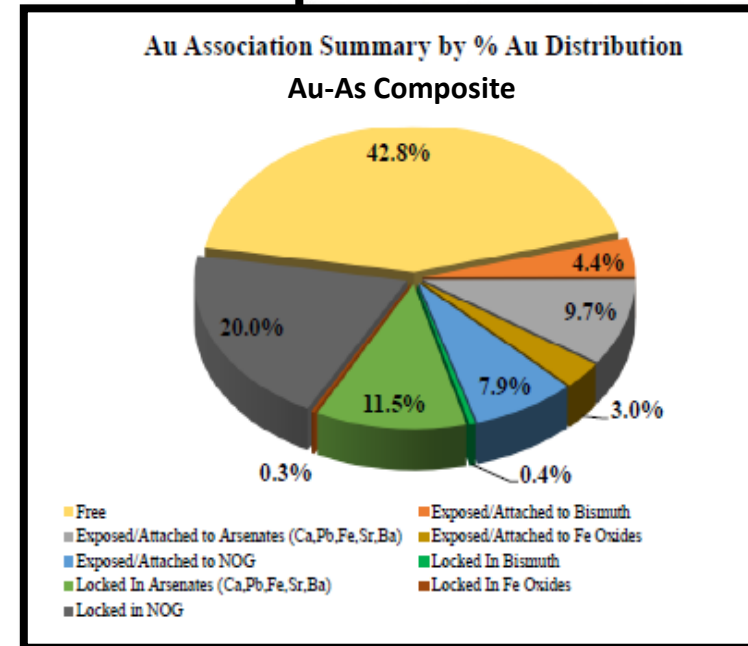
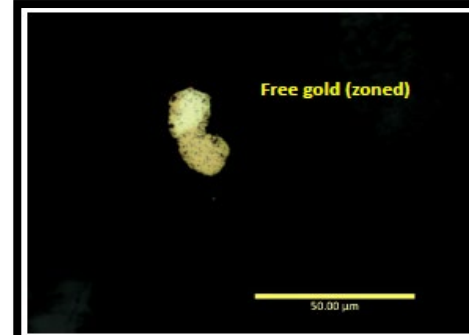
Robert, 1990



GOLD DEPARTMENT & METALLURGY

Highlights

- ❖ 2 composite samples from distinct geochemical mineralization styles
 - Au-As rich veins
 - Au-As-Cu-Ag rich mineralization
- ❖ Samples represent deeply oxidized caps of the orogenic gold system
- ❖ Generally, these samples contain a significant amount of free gold associated with silicates, arsenates, oxides, and native bismuth

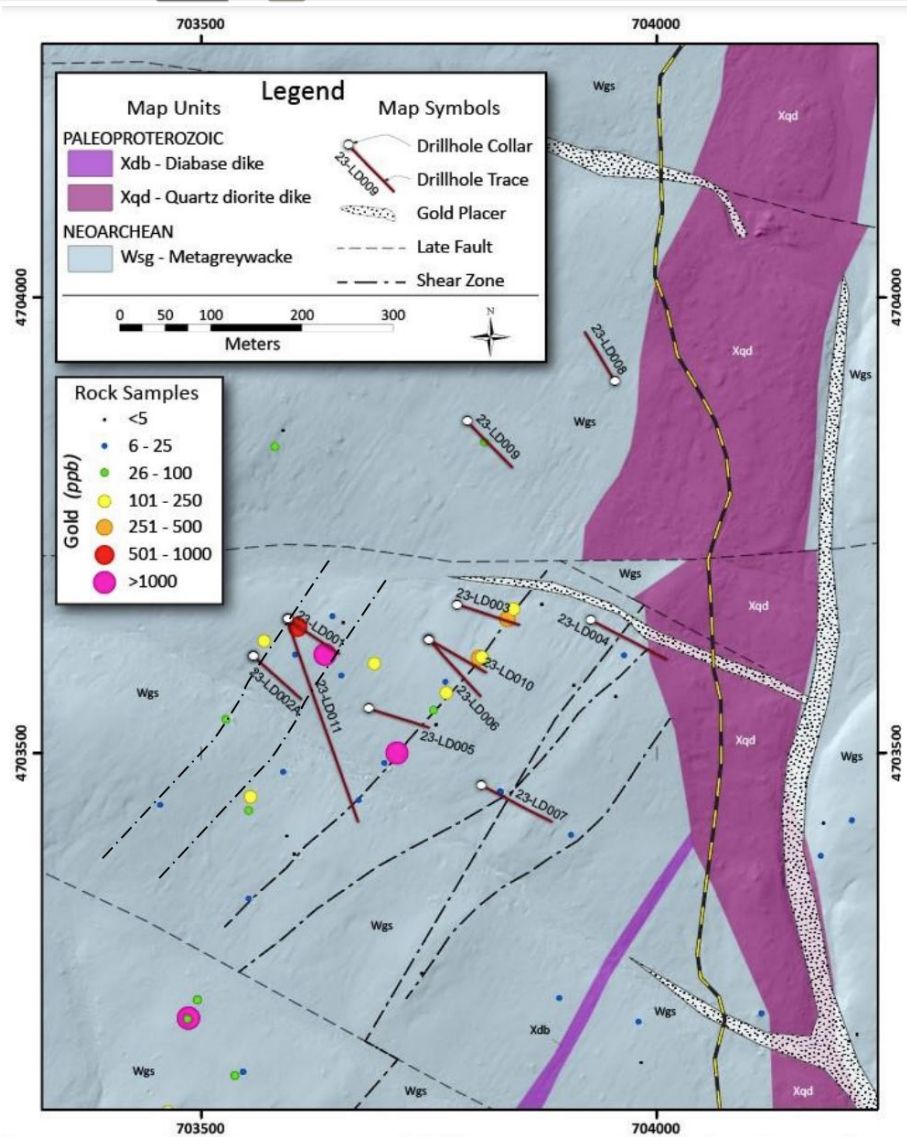


RELEVANT GOLD

TSXV:RGC | OTCQB:RGCCF



LEWISTON HEAVY HAND DRILLING



Project Design

- ✓ Test 500m corridor of stacked shear zones
- ✓ Alteration & sulfide mineralization under the oxidized zone
- ✓ 500m+ strike length of shear corridor
- ✓ Late fault offset & contact zones

Overview

- ◆ 1,560m drilled
- ◆ Sep 11th start; Nov 13th completion
- ◆ 11 holes drilled – HQ core
- ◆ 10 of 11 drill holes intersected shear-hosted Au mineralization
- ◆ Intersected shear zones in multiple drill holes up to 200m depth; including known shear zones and blind shear zones
- ◆ Confirmed significant alteration, veining and relic sulfides

READ THE RELEASE

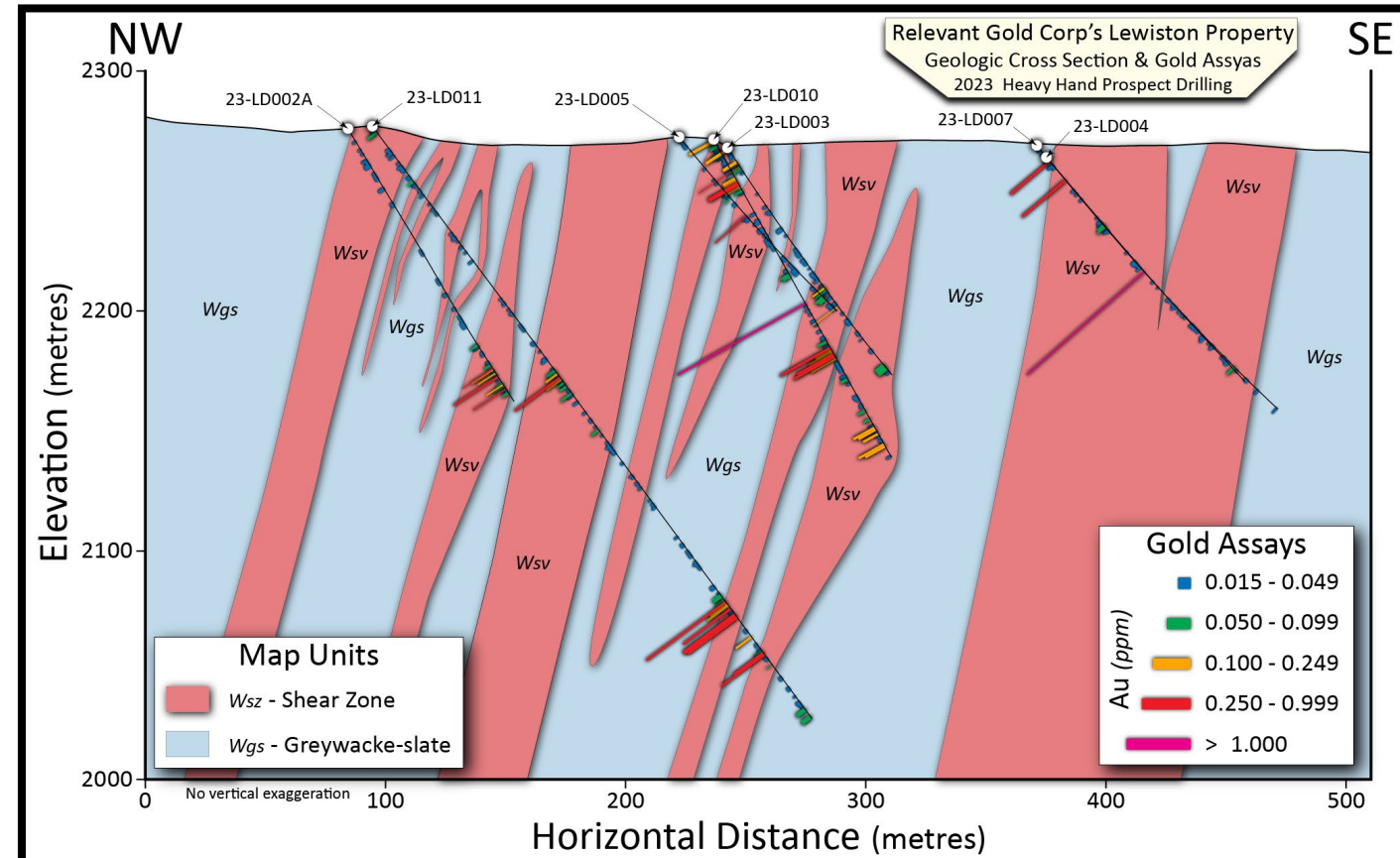
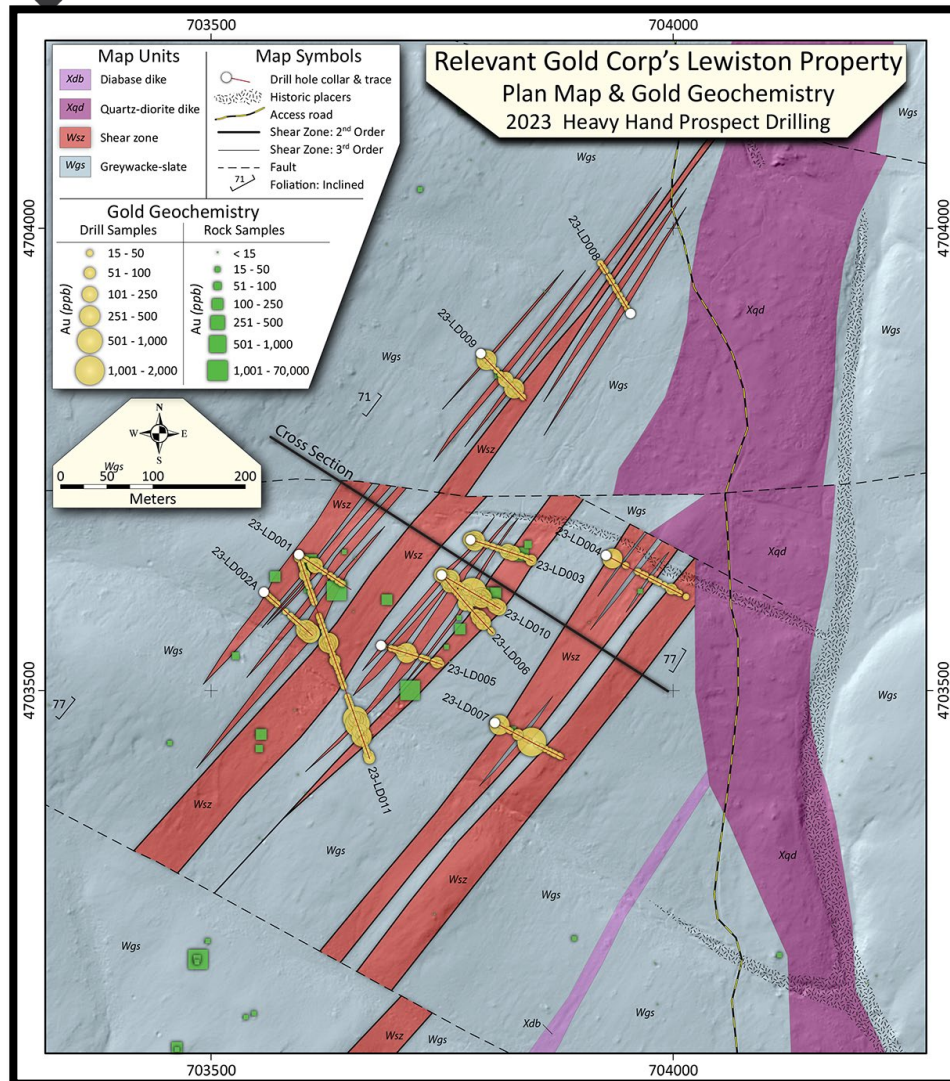


RELEVANT GOLD

TSXV:RGC | OTCQB:RGCCF



2023 HEAVY HAND DRILLING MAP & SECTION



2023 DRILLING HIGHLIGHTS

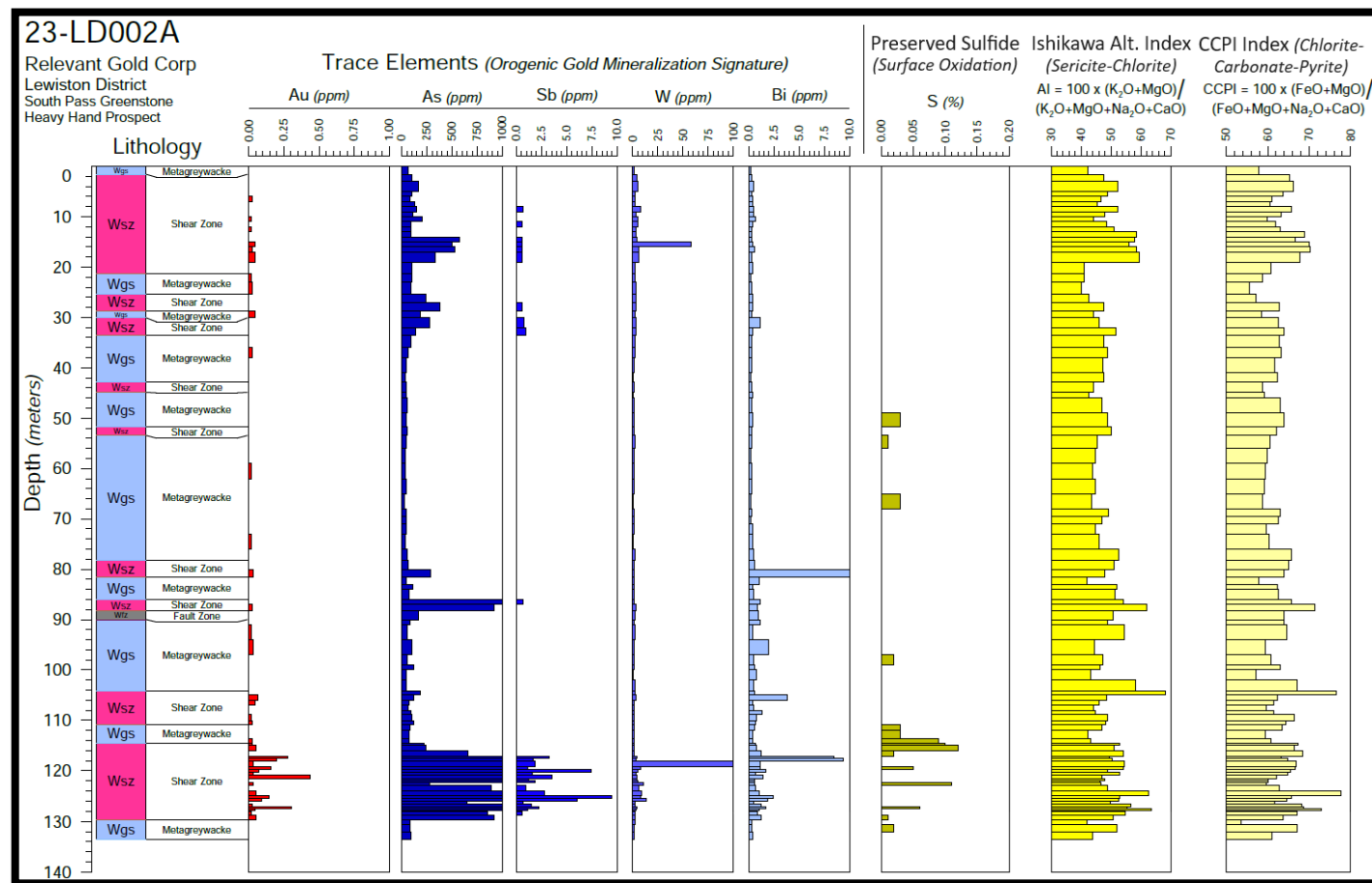




MINERALIZATION & GEOCHEMISTRY

Highlights:

- **Hole 23-LD011:**
 - 10 m core length averaging **0.35 g/t Au** from 273m – 283m; including 1 m of **0.96 g/t Au** from 273 m – 274 m.
 - 2 m core length averaging **0.37 g/t Au** from 302 m – 304 m within fresh Arsenopyrite-Pyrite-Pyrrhotite mineralization.
- **Hole 23-LD010:**
 - 5 m core length averaging **0.16 g/t Au** from 18 m – 23 m.
 - 0.7 m core length of **1.72 g/t Au** from 78 m – 78.7 m.
 - 6 m core length averaging **0.29 g/t Au** from 99 m – 105 m.
 - 10 m core length averaging **0.10 g/t Au** from 137 m – 147 m.
- **Hole 23-LD009:**
 - 2.4 m core length averaging **0.30 g/t Au** from 13.71 – 16.10 m.
 - 4 m core length averaging **0.18 g/t Au** from 80 m – 84 m.
- **Hole 23-LD007:** 0.5 m core length of **1.9 g/t Au** from 69 m-69.6 m.
- **Hole 23-LD002A:** 10.34 m core length averaging **0.1 g/t Au** from 117.14 m – 127.48 m within a **larger 33.5 m** strongly altered hematite-chlorite-biotite-sericite-sulfide shear zone.



RELEVANT GOLD



SHEARING – ALTERATION – VEINING



Initial Core Observations (LD002A)

- ◆ Distinctive alteration mapped at surface confirmed in core
- ◆ Chlorite-Hematite-Sericite-Biotite-Carbonate alteration
- ◆ Distinct shear foliation with local crenulations and “wavy” fabric
- ◆ Relic sulfide mineralization



- ◆ Identified blind mineralized shear zone
- ◆ Confirmed continuity of strongly altered shear-zone in hole LD002A (~100m depth)
- ◆ Confirmed continuity of primary surface mineralized shear zone to >200m depth
- ◆ Drilled beneath oxidized zone into fresh sulfide mineralization (~200m)
- ◆ *Geochemistry pending*



GOLDEN BUFFALO OVERVIEW

HIGH-GRADE

- Abundant high-grade gold at surface; Rock chip assays up to **160+ g/t Au**
- **Visible** coarse gold trenced

DISTRICT-SCALE

- **9,600** Acres (3,884 ha) of BLM mining claims
- **300** acres (121 ha) of patented ground
- **>600** acres (242 ha) of private surface land with water rights

SHEAR-HOSTED

- **Confirmed** large-scale orogenic system
- **GBSZ** deep-rooted fertile gold structure

DRILLING RESULTS

- Drilled **26** holes and **~3,500m** in 2022 field season (first-ever drill program).
- Shear-hosted gold mineralization in **54%** of holes with top intercept: **1m of 83.8 g/t Au**



Coarse Gold in Shear Zone Quartz Veins



Gold Nuggets



Fine Gold Panned from Surface Materials

GOLDEN BUFFALO SHEAR ZONE (GBSZ)

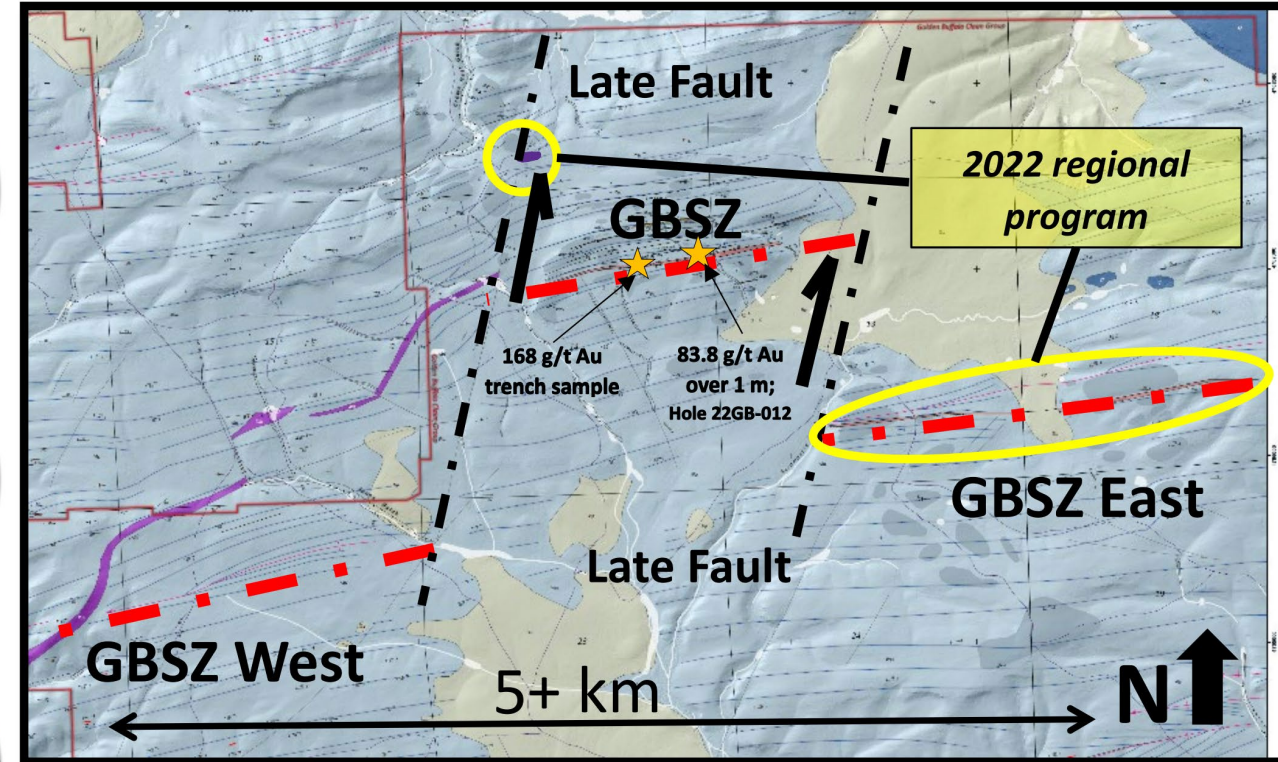


FIGURE: Map illustrating the primary Golden Buffalo Shear Zone (GBSZ) and interpreted extensions to the west and east identified during the 2022 mapping program.

2023 work plan:

- Soil and rock chip sampling
- Mapping GBSZ extensions
- Airborne magnetic survey
- Drill target refinement





GOLDEN BUFFALO ACQUISITION

Relevant Gold Buys Out Option Completing Acquisition of 700 Leased Hectares at its Flagship Golden Buffalo Project



DEAL HIGHLIGHTS:

- **88 BLM** claims (**700 hectares**) acquired in the heart of Golden Buffalo
- **\$16.2M** in calendar-driven payments eliminated
- Relevant Gold team strengthened by addition of GBMC principals Jerome Hutchison and Jacob Tyra



Jerome Hutchison
Community Advisor,
Site Supervisor



Jacob Tyra
Operations Manager





GOLDEN BUFFALO 2023 SUMMARY

High-grade gold from
GBMC trench area



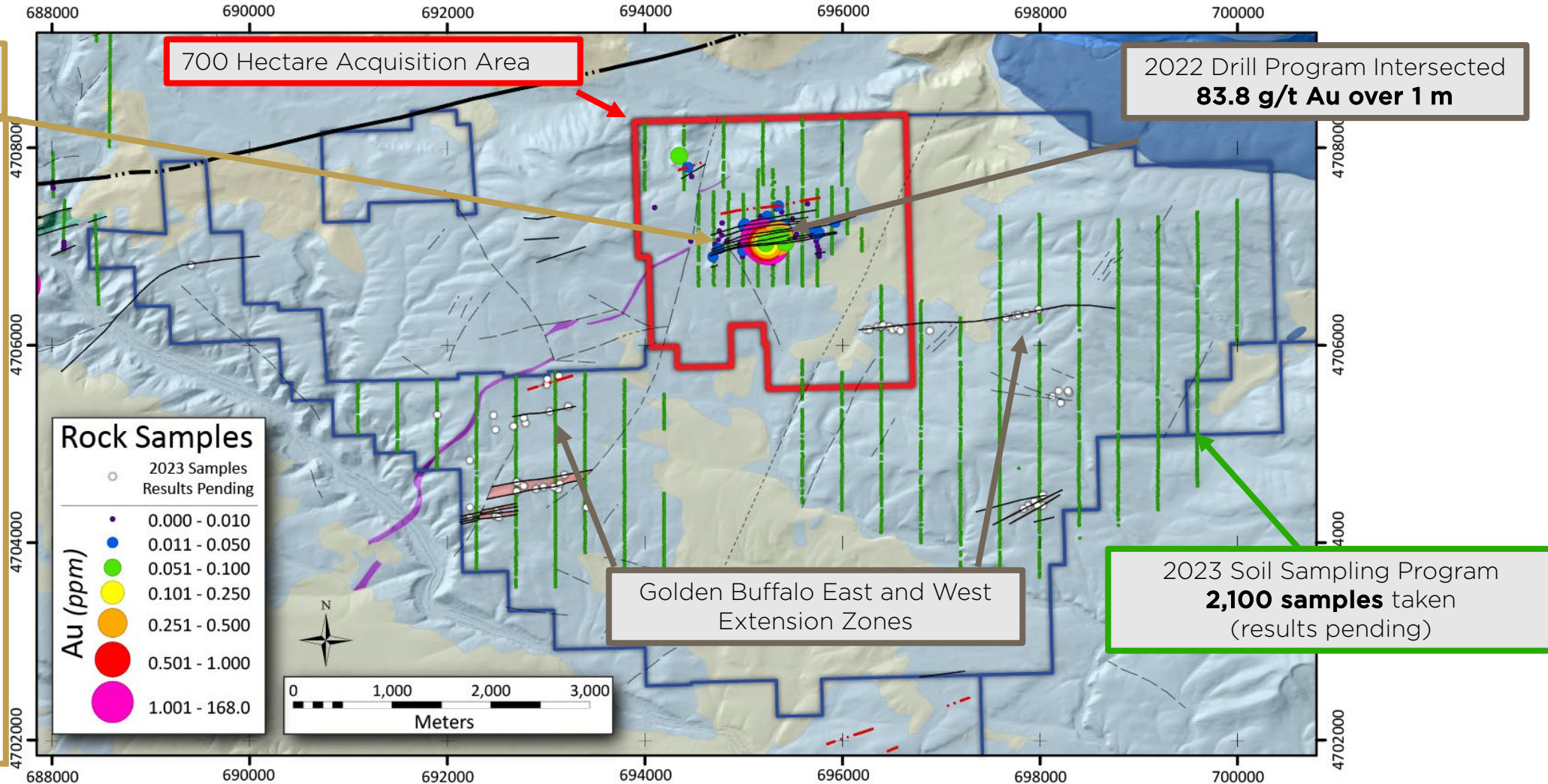
Coarse Gold in Shear Zone Quartz Veins



Gold Nuggets

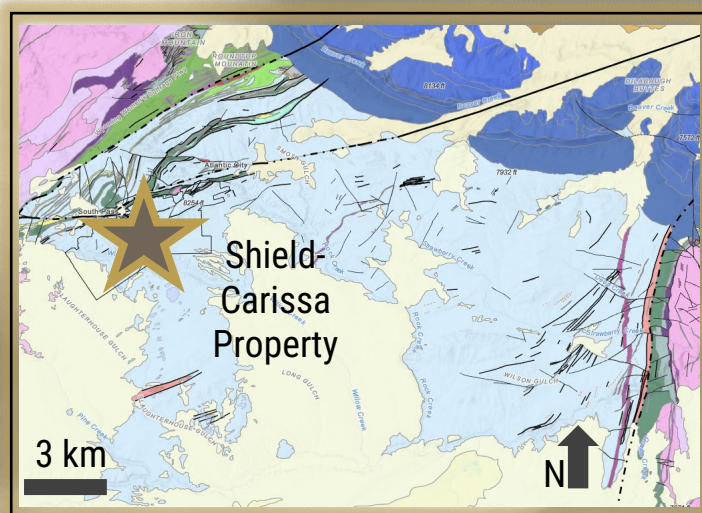


Fine Gold Panned from Surface Materials





SHIELD-CARISSA HIGHLIGHTS



HIGH-GRADE

Au 18.9 g/t

Ag 486 g/t

RGC rock chip sample



DISTRICT SCALE

>1,557
Hectares

Active BLM lode mining claims



SHEAR HOSTED

3

TARGET ZONES

2.7 km

SHEAR ZONE TREND

Parallel to historic Carissa Mine trend

B&H and SHIELDS MINES

2 HISTORIC MINES ON RGC CLAIMS



ADJACENT TO HISTORIC CARISSA MINE

MOST PROLIFIC



Est. 200,000 oz

HISTORIC REGIONAL PRODUCTION





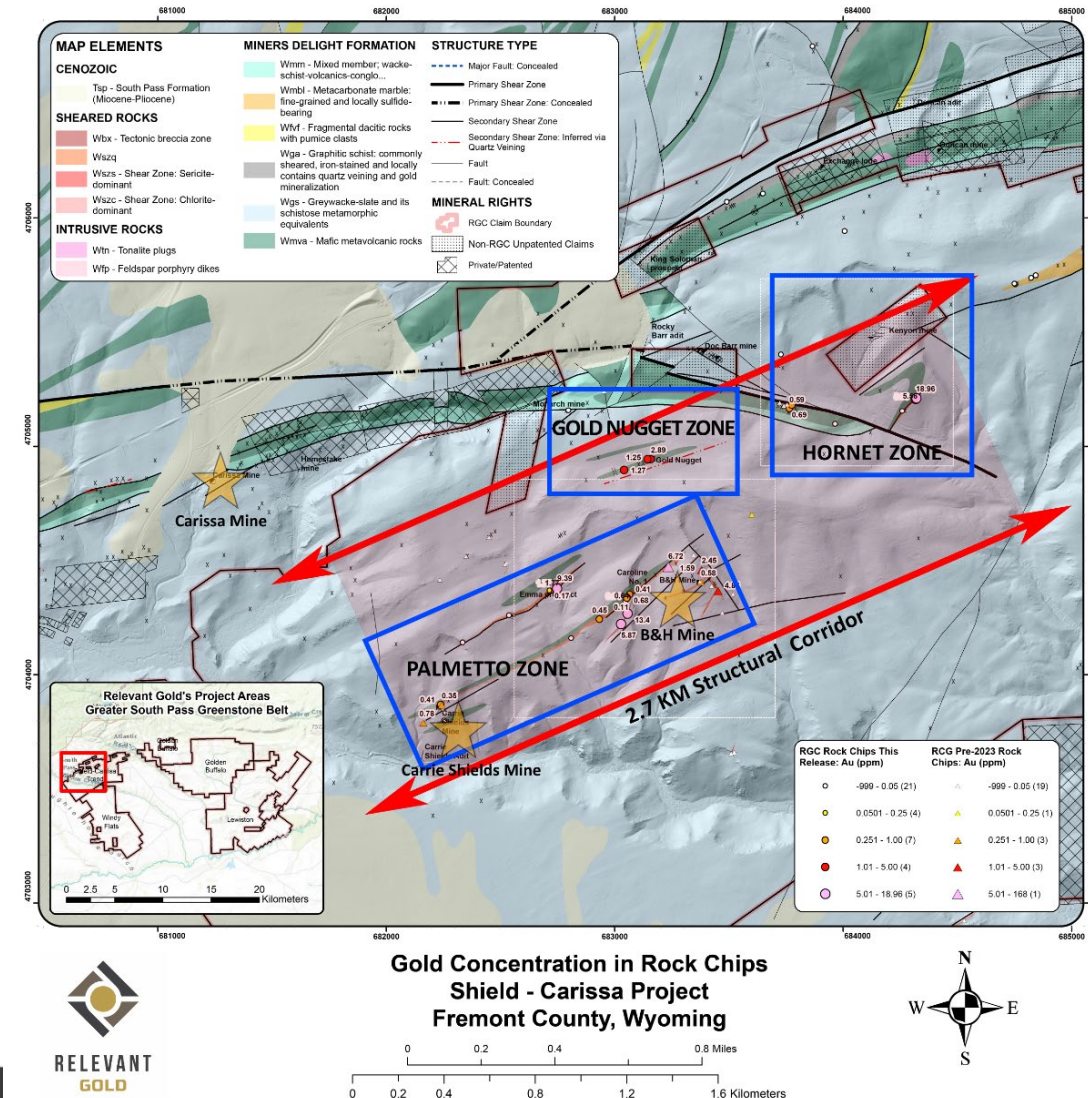
SHIELD-CARISSA 2023 RESULTS

Overview

Program highlights & results:

- Multiple high-grade gold samples in outcrop including 18.9 g/t gold and 486 g/t silver
- 35% of samples reported anomalous gold (>0.1 g/t Au)
- 3 distinct target zones: Hornet, Gold Nugget & Palmetto
- Connected the mineralized structure between both the B&H and Shields historic mines
- Identified multiple “wedges” of mafic rocks associated with shear structures and gold mineralization

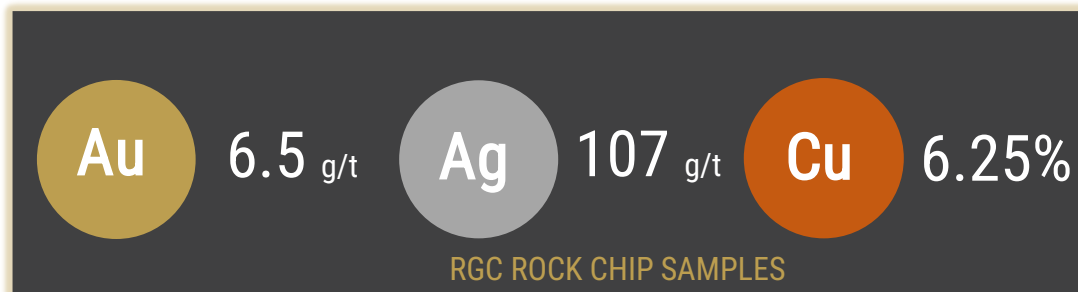
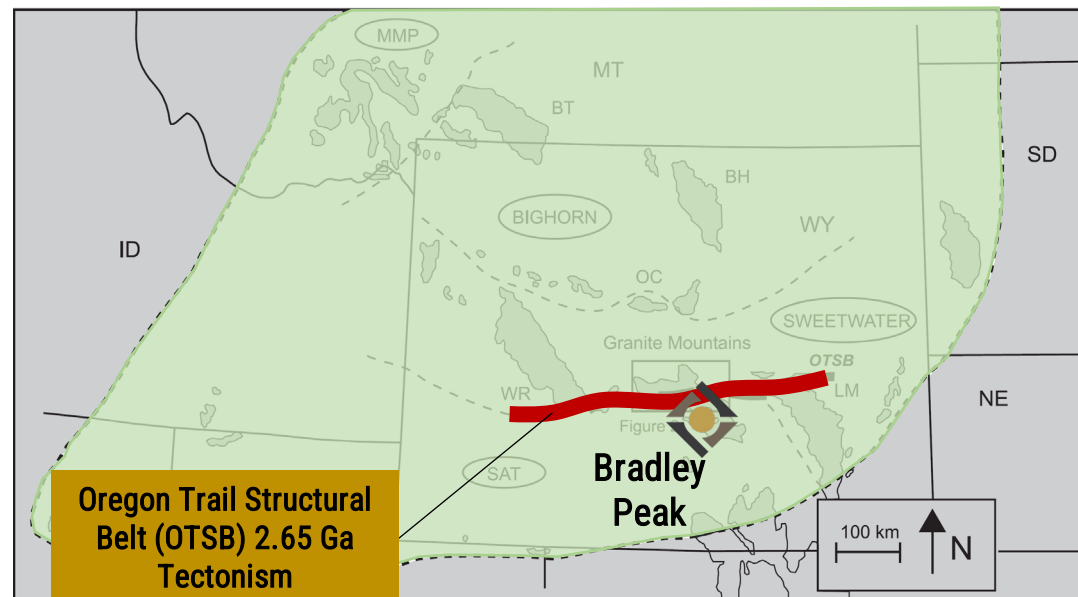
READ THE RELEASE





BRADLEY PEAK GOLD CAMP

	Criteria	Description
✓	Structural Setting	<ul style="list-style-type: none"> Major shear zones Brittle-ductile transition Complex re-folded folds
✓	Host Rock	<ul style="list-style-type: none"> Rheologic contrasts Amphibolites & greenstones Carbonate facies Iron Formation
✓	Alteration	<ul style="list-style-type: none"> Chlorite, Carbonate, Sericite, Epidote, Sulfidation & Silica
✓	Geochemistry	<ul style="list-style-type: none"> Au, Ag, As, Bi, Cu, Sb, Pb & Zn
✓	Mineralization	<ul style="list-style-type: none"> Orogenic and intrusion-related gold mineralization systems
✓	Land Position	<ul style="list-style-type: none"> 100% RGC ownership of 281 contiguous unpatented active BLM claims Rural sub-mountainous terrane ~50miles from well established town and infrastructure
✓	Scalable Opportunity	<ul style="list-style-type: none"> Multiple district-scale targets RGC controls 98% of the entire greenstone belt camp
✓	Permitting	<ul style="list-style-type: none"> Streamlined State +/- Federal permitting pathway



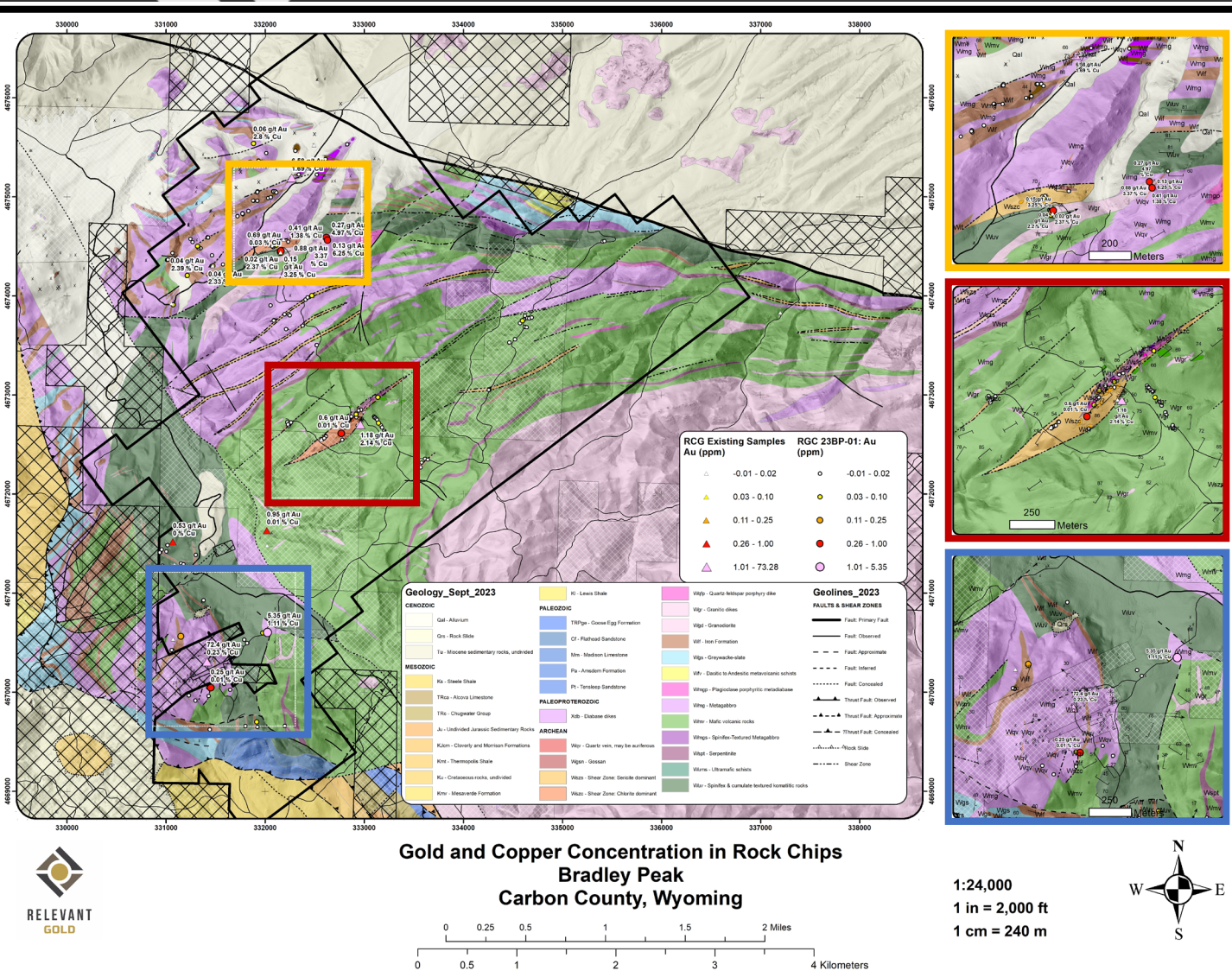


BRADLEY PEAK 2023 RESULTS

Overview

- Mapping and sampling identified multiple new district-scale targets
 - 30 km of newly mapped shear zones
 - Identified new Porphyry intrusive rocks
 - Confirmed intrusive and orogenic style mineralization
- Sampled 5.3 g/t gold, 107 g/t silver, and 6.25% copper in outcrop
- 15% of all rock samples reported gold
- 3 target zones identified:
 - Kortes, Apex, and Deserted Treasure

READ THE RELEASE





LOOKING AHEAD | 2024



- ◆ Awaiting results:
 - Golden Buffalo Soils
 - Airborne Geophysics – *Under Review*
- ◆ Conduct geophysics at Lewiston
- ◆ Drilling at Lewiston and/or Golden Buffalo
- ◆ Refining drill targets at Shield-Carissa and Bradley Peak
- ◆ Mapping and Sampling at Windy Flats



OPPORTUNITY

HEAR FROM DR. MEGAW



“Any time you can apply a **really revolutionary idea** to a new area and then be able to tie up a big piece of it, in an area where you know you can work, that’s a **remarkable opportunity** under any circumstances.”

Dr. Peter Megaw, PhD
Independent Director, Relevant Gold Corp.





JOIN US FOR THE NEXT BIG DISCOVERY

WWW.RELEVANTGOLDCORP.COM

 [@RELEVANTGOLDCORP](https://www.linkedin.com/company/relevantgoldcorp)

FOR QUESTIONS & INFORMATION, PLEASE CONTACT:

investorrelations@relevantgoldcorp.com
+1-763-760-4886

RELEVANT GOLD

TSXV:RGC | OTCQB:RGCCF