

February 2026



**RELEVANT**  
**GOLD**

TSXV:RGC  
OTCQB:RGCCF



**A BELT-SCALE GOLD OPPORTUNITY IN MINING-FRIENDLY WYOMING**



# CAUTIONARY STATEMENT

This presentation contains certain statements that constitute forward looking information within the meaning of applicable securities laws. These statements relate to future events of Relevant Gold Corp. (“Relevant” or “the Company”). Any statements that express or involve discussions with respect to predictions, expectations, beliefs, plans, projections, objectives, assumptions or future events or performance (often, but not always, using words or phrases such as “seek”, “anticipate”, “plan”, “continue”, “estimate”, “expect”, “forecast”, “may”, “will”, “project”, “predict”, “potential”, “targeting”, “intend”, “could”, “might”, “should”, “believe”, “outlook” and similar expressions) are not statements of historical fact and may be forward looking information. Forward looking information in this presentation includes, but is not limited to, statements with respect to successfully consolidating further land packages, Relevant’s ability to raise sufficient capital to fund exploration programs and its obligations under property agreements, seek a listing on a recognized stock exchange, drilling plans, financing success, discovery and production of minerals, metal prices and currency exchange rates, timing of technical reports and drill results, corporate and technical objectives, permitting success and relationships with stakeholders.

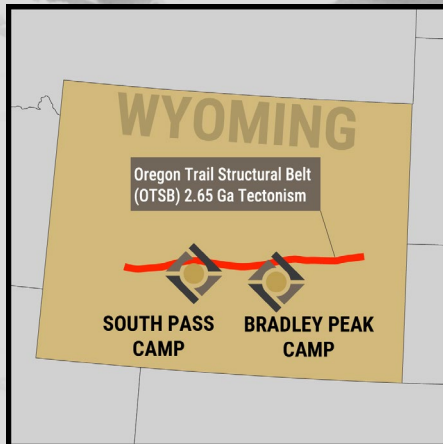
Forward looking information involves known and unknown risks, uncertainties and other factors which may cause the actual results, performance or achievements of the Company to be materially different from any future results, performance or achievements expressed or implied by the forward-looking information. Such risks include, among others, the inherent risk of the mining industry; adverse economic and market developments; the risk that the Company will not be successful in completing additional acquisitions; risks relating to the estimation of mineral resources; the possibility that the Company’s estimated burn rate may be higher than anticipated; risks of unexpected cost increases; risks of labour shortages; risks relating to exploration and development activities; risks relating to future prices of mineral resources; risks related to work site accidents, risks related to geological uncertainties and variations; risks related to government and community support of the company’s projects; risks related to global pandemics and other risks related to the mining industry. The Company believes that the expectations reflected in such forward-looking information are reasonable, but no assurance can be given that these expectations will prove to be correct and such forward-looking information should not be unduly relied upon. These statements speak only as of the date of this presentation. The Company does not intend, and does not assume any obligation, to update any forward-looking information except as required by law.

This document does not constitute an offer to sell, or a solicitation of an offer to buy, securities of the Company in Canada, the United States or any other jurisdiction. Any such offer to sell or solicitation of an offer to buy the securities described herein or during the presentation will be made only pursuant to subscription documentation between the Company and prospective purchasers. Any such offering will be made in reliance upon exemptions from the prospectus and registration requirements under applicable securities laws, pursuant to a subscription agreement to be entered into by the Company and prospective investors.

The scientific and technical contents of this presentation have been approved by Mr. Brian C. Lentz, CPG, Chief Exploration Officer of the Company, who is a “Qualified Person” as defined by Canadian National Instrument 43-101 (Standards of Disclosure for Mineral Projects). Mr. Lentz is not independent of the Company.



# CONTROLLING AN ARCHEAN BELT



- 2 CAMPS
- 5 DISTRICT-SCALE PROJECTS
- 17 HIGH-GRADE TARGETS
- #4 MINING JURISDICTION GLOBALLY

FOUR DRILL-PROVEN OROGENIC GOLD SYSTEMS  
IN HISTORIC HIGH-GRADE MINING DISTRICTS

Bradley Peak Gold Camp  
Wyoming, USA







# MULTI-CAMP GOLD DISCOVERY ENGINE

## Validated Exploration Model

- Exploration strategy directly informed by 100+ years of Abitibi orogenic gold discoveries
- Focused on large, deep-rooted shear corridors with demonstrated gold fertility
- First ever drilling and surface work have confirmed gold-bearing systems, materially reducing conceptual risk

## District-Scale Discovery Pipeline

- Two camps hosting 17 targets at different stages of advancement
- **Bradley Camp:** APEX target - first ever drilling (12 holes) confirms mineralized orogenic gold system with scale potential
- **South Pass Camp:** Lewiston project - 16 of 17 drill holes confirm multiple sub-vertical mineralized panels. Golden Buffalo Project – high-grade trench and high-grade initial drill results.
- Significant upside from un-tested strike length and parallel structures

## High-grade Gold Systems

- High-grade orogenic gold systems identified across the portfolio
- Highest grade drill intercept to-date = **83.8 g/t Au over 1m within 3m @ 28 g/t Au** (Golden Buffalo/South Pass Camp)
- Highest grade surface samples = **168 g/t Au, 2203 g/t Ag, 12.7% Cu**

## Strategic & Insider Alignment

- Kinross and Bollinger (~19.9% each) providing validation and long-term alignment
- Strong insider and management ownership ensures capital discipline and incentive alignment
- Clean capital structure with limited warrant overhang

## Capital Discipline & Execution Readiness

- World-class exploration and management team
- History of efficient capital deployment with majority of funds directed to the ground
- Scalable program targeting 20,000+ metres of drilling across priority targets in 2026-2027

## Low Jurisdictional & Operating Risk

- Projects located in Wyoming, USA — stable, mining-friendly jurisdiction
- Excellent access, permitting clarity, and infrastructure
- Underexplored Archean terrane analogous to prolific Abitibi greenstone belts

**RELEVANT GOLD**

TSXV:RGC | OTCQB:RGCCF



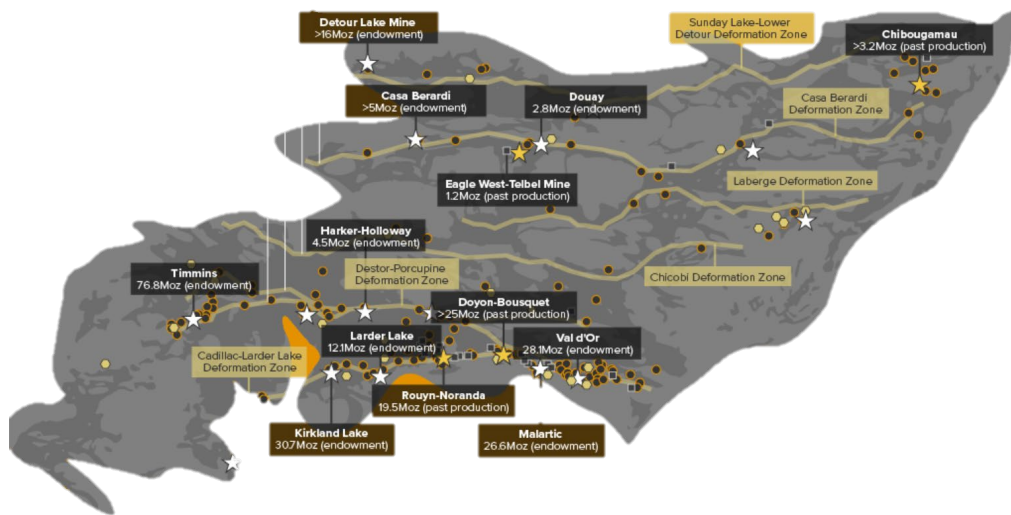




# THE CANADIAN ABIBITI

A structurally controlled, Archean gold system that has delivered for over 125 years

Figure Source: Modified from Visual Capitalist, Canada's Gold Exploration Frontier:  
The Abitibi Greenstone Belt, May 19, 2021



**Total Estimated Drilling in the Abitibi: 100,000,000+ metres**

## A WORLD-CLASS GOLD SYSTEM DEFINED:

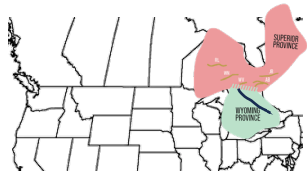
- **~300+ Moz gold produced:** one of the most prolific gold belts on Earth
- **Multiple world-class camps** (*Timmins, Val-d'Or, Kirkland Lake*) aligned along 200–300 km E–W belts
- **Archean-aged greenstone belt (~2.7 Ga):** globally proven gold-bearing terrane
- **100+ years** of continuous exploration
- **High-grade, shear-hosted orogenic gold** systems with multi-decade mine lives
- **Deep crustal structures and intrusive events** focusing gold along major deformation zones
- **Top gold camps:** Timmins (75+ Moz), Val-d'Or/Canadian Malartic (45+ Moz), Kirkland Lake (42+ Moz)
- **21 gold deposits** of >3 Moz



# THE AMERICAN ABIBITI

A geologic twin to the Abitibi, but largely unexplored with modern methods

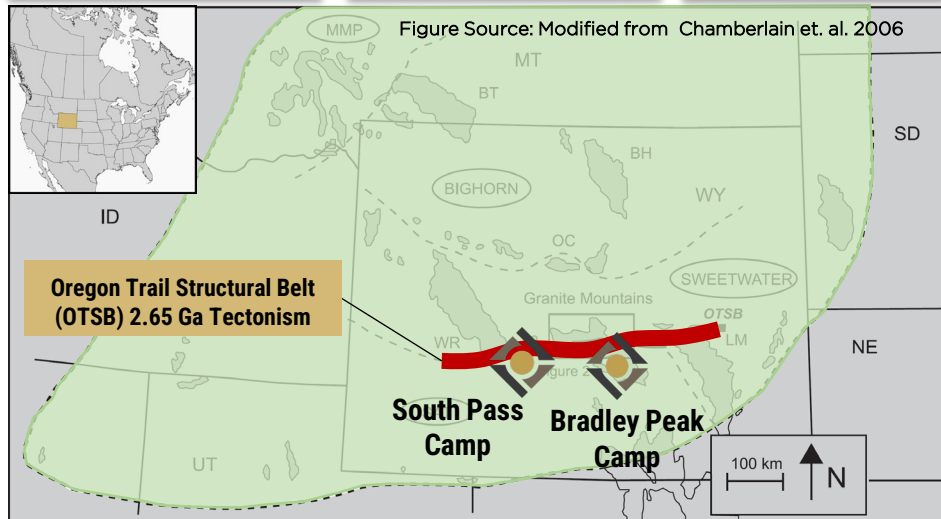
## 1 ~2.65 BILLION YEARS AGO



## 2 ~2.1 BILLION YEARS AGO



1. Wyoming and the Abitibi were connected at the time of gold mineralization
2. Continental rifting later moved Wyoming to its current location. (Chamberlain et. al. 2006)



## A WORLD-CLASS GOLD SYSTEM IN THE MAKING:

- **200 km+ east-west shear corridor** (Oregon Trail Structural Belt)
- **Two major Archean gold camps** aligned along the same belt (South Pass and Bradley Peak)
- **Archean greenstone terrane (~2.7 Ga)** analogous in age and setting to the Abitibi
- **No modern exploration** in last 80+ years
- **Shear-hosted orogenic gold mineralization** – high-grade at surface and drill-confirmed
  - **Surface highlights:** 168 g/t Au, 2203 g/t Ag, 12.7% Cu, 4.3% Pb
  - **Drill highlights:** 83.8 g/t Au over 1 m, 28 g/t Au over 3 m
- **District-scale structural system** with widespread gold mineralization across multiple targets
  - **2 camps, 5 projects, 17 targets**

**Total Drilling in RGC Camps: ~11,000 metres!**



# A UNIQUE DISCOVERY OPPORTUNITY IN **THE AMERICAN ABITIBI**



South Pass Gold Camp  
Wyoming, USA





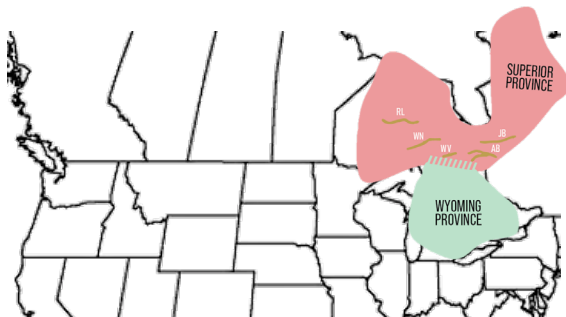


# ABITIBI THESIS

SCAN FOR ANIMATION

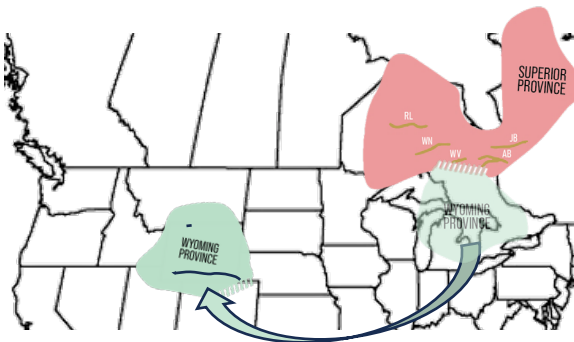


~2.65 BILLION YEARS AGO



The Wyoming Province and the Superior Province (Abitibi) were connected when gold mineralization occurred. (Chamberlain et. al. 2006)

~2.1 BILLION YEARS AGO



Continental rifting caused the Wyoming Province to separate, rotate, and move to its current location over many millions of years.

MODERN DAY



Relevant Gold applied these insights to secure the most prospective ground in Wyoming and is pursuing the next great orogenic gold discovery.



# SUPPORTING LITERATURE

- Blackwelder, E. 1926. Pre-Cambrian geology of the Medicine Bow Mountains, Geological Society of America Bulletin, 37, 615–658.
- Bleeker, W. & Ernst, R.E. 2010. The Archean supercraton Superia: keys to the formation of early continents. *Precambrian Research*, 183(1), 1–26.
- Chamberlain, K.R., Frost, C.D. & Frost, B.R. 2003. Early Archean to Mesoproterozoic evolution of the Wyoming Province: Archean origins to modern lithospheric architecture. *Canadian Journal of Earth Sciences*, 40(10), 1357–1374.
- Chamberlain, K.R., Kilian, T.M., Evans, D.A.D. & Bleeker, W. 2015. Late Archean to Paleoproterozoic reconstructions of the Wyoming and Superior cratons. In: Li, Z.X., Evans, D.A.D. & Murphy, J.B. (eds), *Supercontinent Cycles Through Earth History*. Geological Society, London, Special Publications, 424, 153–170.
- Dahl, P. S., Holm, D. K., Gardner, E. T., Hubacher, F. A. & Foland, K. A. 1999. New constraints on the timing of Early Proterozoic tectonism in the Black Hills (South Dakota), with implications for docking of the Wyoming province with Laurentia. *Geological Society of America Bulletin*, 111, 1335–1349.
- Ding, X., Evans, D.A.D., Kilian, T.M., Mitrova, J.X., Wu, L., Zhao, J., Ren, Z. & Yu, H. 2024. A new 2.48 Ga paleomagnetic pole from Wyoming constrains the assembly of the supercraton Superia. *Nature Communications*, 15, 12345.
- Ernst, R.E. & Bleeker, W. 2010. Large igneous provinces (LIPs), giant dike swarms, and mantle plumes: significance for breaking up supercontinents and creating continents. In: *When Did Plate Tectonics Begin on Planet Earth?* (GSA Special Paper 440), 437–461. Geological Society of America.
- Frost, C.D., and Frost, B.R., 1993. The Archean history of the Wyoming Province. in *Geology of Wyoming*. Edited by A.W. Snoke, J.R. Steidtmann, and S.M. Roberts. Geological Survey of Wyoming, Memoir No. 5, pp. 58–76.
- Grace, R.L.B., Chamberlain, K.R., Frost, B.R., and Frost, C.D. 2006. Tectonic histories of the Paleo- to Mesoarchean Sacawee block and Neoproterozoic Oregon Trail structural belt of the south-central Wyoming Province, in *The Wyoming Province: a distinctive Archean craton in Laurentian North America*, Can. J. Earth Sci. 43: 1445–1466.
- Graff, P. 1979. A review of the stratigraphy and uranium potential of early Proterozoic (Precambrian X) metasediments in the Sierra Madre, Wyoming. *Rocky Mountain Geology*, 17, 149–157.
- Harlan, S.S., Geissman, J.W., and Premo, W.R., 2003. Paleomagnetism and geochronology of an Early Proterozoic quartz diorite in the southern Wind River Range, Wyoming, USA, *Tectonophysics*, 362, pp. 105–122.
- Houston, R. S. 1993. Late Archean and early Proterozoic geology of southeastern Wyoming. *Geology of Wyoming: Geological Survey of Wyoming Memoir*, 5, 78–116.
- Kilian, T.M., Bleeker, W., Chamberlain, K., Evans, D.A.D., and Cousen, B., 2016. Paleomagnetism, geochronology and geochemistry of the Paleoproterozoic Rabbit Creek and Powder River dyke swarms: implications for Wyoming in supercraton Superia in Li, Z. X., Evans, D. A. D. & Murphy, J. B. (eds) 2016. *Supercontinent Cycles Through Earth History*, Geological Society, London, Special Publications, 424, 15–45.
- Mammone, V., Gumsley, A.P., Söderlund, U., Chamberlain, K.R., Eglinger, A., Zeh, A. & Ernst, R.E. 2022. Testing the early Paleoproterozoic connection of the Superior and Wyoming cratons with geochronology and geochemistry. *Precambrian Research*, 379, 106807.
- Mueller, P. A. & Burger, H. R. et al. 2005. Paleoproterozoic metamorphism in the Northern Wyoming Province: implications for the assembly of Laurentia. *The Journal of Geology*, 113, 169–179.
- Mueller, P. A., Heatherington, A. L., Kelly, D. M., Wooden, J. L. & Mogk, D. W. 2002. Paleoproterozoic crust within the Great Falls tectonic zone: implications for the assembly of southern Laurentia. *Geology*, 30, 127–130.
- Roscoe, S. M. 1969. Huronian rocks and uraniferous conglomerates in the Canadian shield. *Geological Survey of Canada, Ottawa, Papers*, 68–40, 205.
- Roscoe, S.M. & Card, K. D. 1993. The reappearance of the Huronian in Wyoming: rifting and drifting of ancient continents. *Canadian Journal of Earth Sciences*, 30, 2475–2480.
- Spall, H., 1971. Paleomagnetism and K-Ar age of mafic dikes from the Wind River Range, Wyoming: *Geological Society of America Bulletin*, v.82, p.2457–2472.
- St-Onge, M. R., Searle, M. P. & Wodicka, N. 2006. Trans-Hudson Orogen of North America and Himalaya–Karakoram–Tibetan Orogen of Asia: structural and thermal characteristics of the lower and upper plates. *Tectonics*, 25, TC4006.
- Young, G. M. 1970. An extensive early Proterozoic glaciation in North America? *Palaeogeography, Palaeoclimatology, Palaeoecology*, 7, 85–101.
- Young, G. M., Long, D. G. F., Fedo, C.M. & Nesbitt, H. W. 2001. Paleoproterozoic Huronian basin: product of a Wilson cycle punctuated by glaciations and a meteorite impact. *Sedimentary Geology*, 141–142, 233–254.





# UNLOCKING A NEW BELT

From Concept to Multi-Camp Orogenic  
Discovery Engine



## THESIS & DATABASE 2017-18

Built Archean  
thesis + proprietary  
Wyoming database



## LAND & RECON 2018-21

Assembled >50K acres  
Across 2  
Archean belts



## SYSTEMATIC WORK 2019-Present

Identified 17 high-  
grade targets, 50+  
km of new shears



## FIRST PASS DRILLING 2022-2025

Orogenic gold  
systems confirmed  
by 4 drill programs,  
~11K m of core



## DISCOVERY DRILLING 2026-2027

Targeted drilling at  
Apex, Lewiston,  
Golden Buffalo, +  
pipeline







# SURFACE SAMPLE HIGHLIGHTS

## **GOLDEN BUFFALO:**

168 g/t Au  
4.1 g/t Au  
2.5 g/t Au  
~20 m surface trench  
produced >500 oz gold

## **LEWISTON:**

62.4 g/t Au  
2203 g/t Ag  
12.7% Cu  
4.3% Pb

## **SHIELD-CARISSA:**

18.96 g/t Au  
486.9 g/t Ag  
232 ppm W  
183 ppm SB

## **BRADLEY PEAK:**

72.4 g/t Au  
107 g/t Ag  
7.8% Cu  
2% Zn

\*RGC highlighted rock chip and grab samples







# DRILL RESULT HIGHLIGHTS

## TOTAL METERS DRILLED TO DATE:

**11,166 m**

Across 4 drill programs

## SUCCESS RATE:

**76%**

of all drill holes  
intersected gold  
mineralization  
(42 of 55 holes)

## GOLDEN BUFFALO (2022):

1m @ 83.8 g/t Au  
within 3m @ 28 g/t Au  
Abitibi-style alteration  
observed in all holes

## LEWISTON – HIDDEN HAND (2023):

10m @ 0.35 g/t Au  
0.5m @ 1.9 g/t Au  
10 of 11 drill holes  
intersected gold  
mineralization

## LEWISTON – BURR (2024):

1.5m @ 2.2 g/t Au  
23m @ 0.13 g/t Au  
All 6 drill holes  
intersected gold  
mineralization

## BRADLEY PEAK – APEX (2025):

1.35m @ 0.42 g/t Au  
0.91m @ 0.40 g/t Au  
1.6m @ 0.20 g/t Au  
All 12 holes intersected  
gold mineralization

**South Pass Gold Camp**  
Wyoming, USA

\*All results reported as core length





# FINANCIAL SNAPSHOT

**CASH ON HAND:**  
~\$3.5M CAD\*

\*as of January 2026

**APPROXIMATE  
BURN RATE:**  
\$120K / month

**TOTAL CAPITAL RAISED:**  
\$26.7M  
(since 2020)

**FINDERS FEES PAID:**  
\$249K\*  
(since 2020)

**SIMPLE COST OF  
CAPITAL:**  
<1.0%

**FY24 USE OF  
PROCEEDS:**  
<17.5%  
G&A  
>68.7%  
exploration/evaluation







# CORPORATE STRUCTURE

## MARKET SUMMARY: (as of 02/10/2026)

Market Capitalization: ~\$62M  
Avg. Volume: ~75K+ shares per day  
52 week high/low: \$0.55/\$0.23

## SHARE BREAKDOWN:

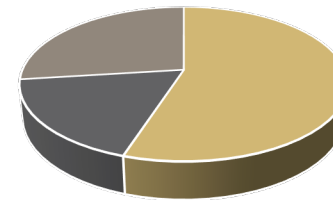
Issued and Outstanding: 118,918,961  
Reserved for Issuance: 15,937,788\*  
Fully Diluted: 134,856,749

### \* Includes:

Management/Board Options:	3,750,000 @ \$0.35	Expire 2027	\$1,312,500
Management/Board Options:	3,400,000 @ \$0.34	Expire 2030	\$1,156,000
Management/Board Options:	1,000,000 @ \$0.50	Expire 2031	\$500,000
Warrants:	7,787,788 @ \$0.35	Expire 2026	\$2,725,725

## MAJOR SHAREHOLDERS: (as of 10/16/2025 warrant execution)

- + Management (>21.99%)
- + Kinross Gold
- + Mr. William Guest Bollinger
- + Mr. Rob McEwen
- + Ultra High Net Worth Individuals
- + Retail Investors



Approximate Ownership Breakdown

- Management and Insiders
- Major Holders
- Retail Investors

Public Float: 26.5% (>31M free trading shares)





# TRADING PROFILE

## RGC SHARE PERFORMANCE – PREVIOUS 12 MONTHS



**RELEVANT GOLD**

TSXV:RGC | OTCQB:RGCCF





# MEET THE TEAM

## BOARD OF DIRECTORS



### INDEPENDENT BOARD CHAIR

**Sarah Weber**

20+ Years Experience  
P. Geo / MBA

CEO, C3 Alliance Corp.



### INDEPENDENT DIRECTOR

**Dr. Peter Megaw, PhD.**

40+ Years Experience  
PhD., Economic Geology

Cofounder, MAG Silver Corp.



### INDEPENDENT DIRECTOR

**Ronald L. Parratt**

40+ Years Experience  
M.Sc. Economic Geology

Cofounder, Auxex Ventures, Inc.



### INDEPENDENT DIRECTOR

**Larry Taddei**

30+ Years Experience  
CPA, CA

Prior CFO, MAG Silver Corp.



### DIRECTOR, CEO

**Rob Bergmann**

18+ Years Experience  
B.Sc. Geology

Founder, Relevant Gold Corp.



### DIRECTOR, CXO

**Brian Lentz**

18+ Years Experience  
B.Sc. Geology / P. Geo

Founder, Relevant Gold Corp.

## MANAGEMENT & ADVISORS



**Mahesh Liyanage**  
RGC CFO



**Kristopher Jensen**  
VP Corporate Comms.



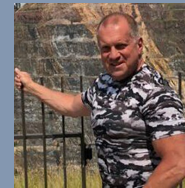
**Mal Karwowska**  
Strategic Advisor



**Jerome Hutchison**  
Community Advisor



**Dr. Dean Peterson, PhD**  
Technical Advisor



**Dr. Thomas Campbell, PhD**  
Technical Advisor



**Dr. Kevin Chamberlain, PhD**  
Technical Advisor



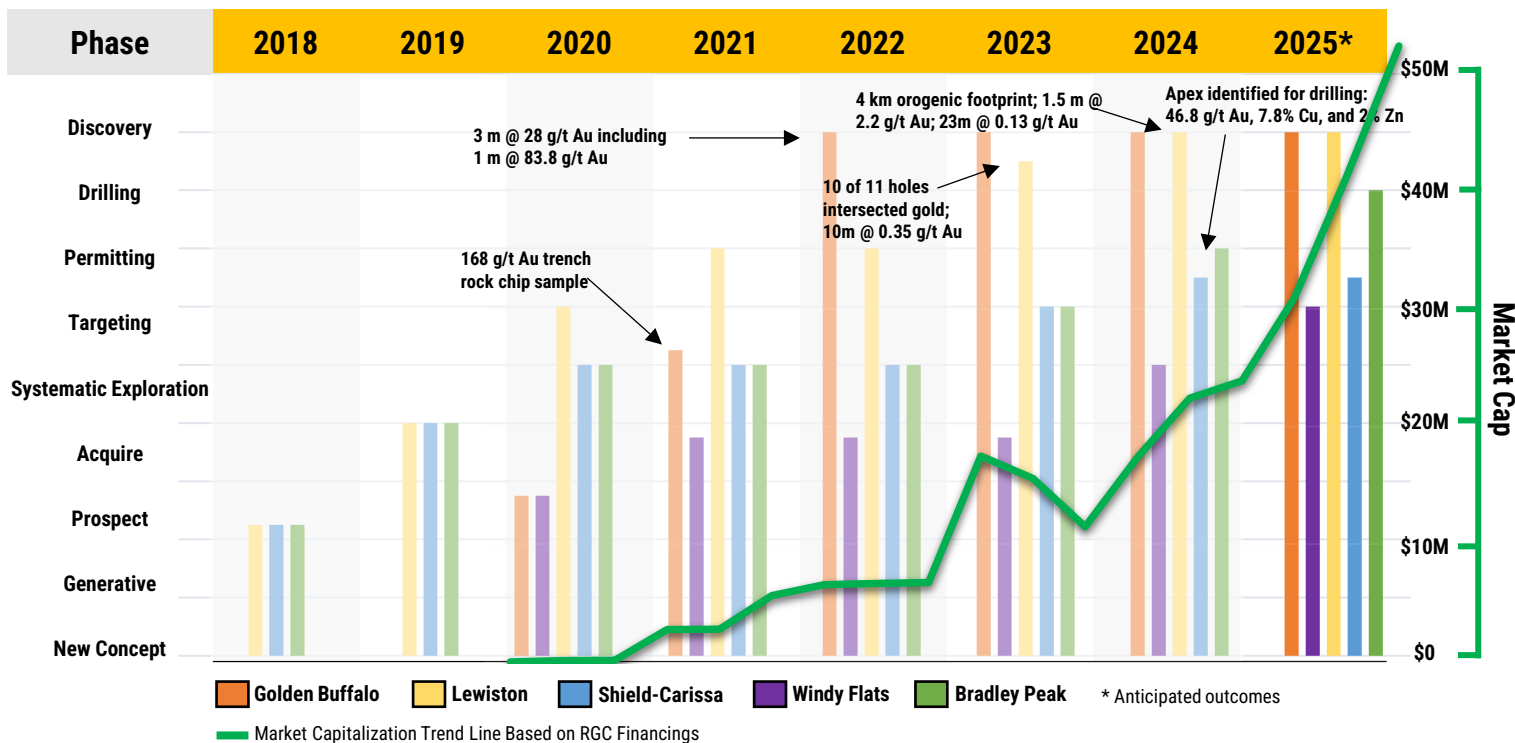
FULL BIOS CAN BE FOUND AT [RELEVANTGOLDCORP.COM](https://relevantgoldcorp.com)

**RELEVANT GOLD**  
TSXV:RGC | OTCQB:RGCCF





# SYSTEMATIC EXPLORATION = VALUE CREATION





# PORTFOLIO AT A GLANCE

Highlighted drill intercepts and sample assays

## SOUTH PASS GOLD CAMP

### GOLDEN BUFFALO PROJECT

Drilled 3,500 m, with highlighted intercepts:

- 83.8 g/t Au over 1 m within 28 g/t Au over 3 m
- 54% of drill holes intersected mineralization

Rock chip sample highlighted by: 168 g/t Au  
3.5 km<sup>2</sup> soil geochemical anomaly identified

### LEWISTON PROJECT

Drilled 2,586 m along 4+ km trend  
16 of 17 holes cut Au mineralization  
Highlighted intercepts:

- 1.5 m @ 2.2 g/t Au
- 0.8 m @ 1.2 g/t Au
- 0.7 m @ 1.7 g/t Au
- 0.5 m @ 1.9 g/t Au
- 23 m @ 0.13 g/t Au
- 10 m @ 0.35 g/t Au

2025 rock chip sampling: 25.4 g/t Au,  
2,203 g/t Ag, 12.7% Cu, 4.3% Pb

### SHIELD-CARISSA PROJECT

3 new high-grade targets identified  
1.5 km x 3 km structural corridor  
Sampled 18.9 g/t Au and 486 g/t Ag

### 6 high-grade targets identified at Bradley Peak

Orogenic + Intrusive mineralization  
Rock chip sample highlights:

- 46.8 g/t Au, 107 g/t Ag, 7.8% Cu, & 2% Zn

Drilled orogenic Au system at APEX target

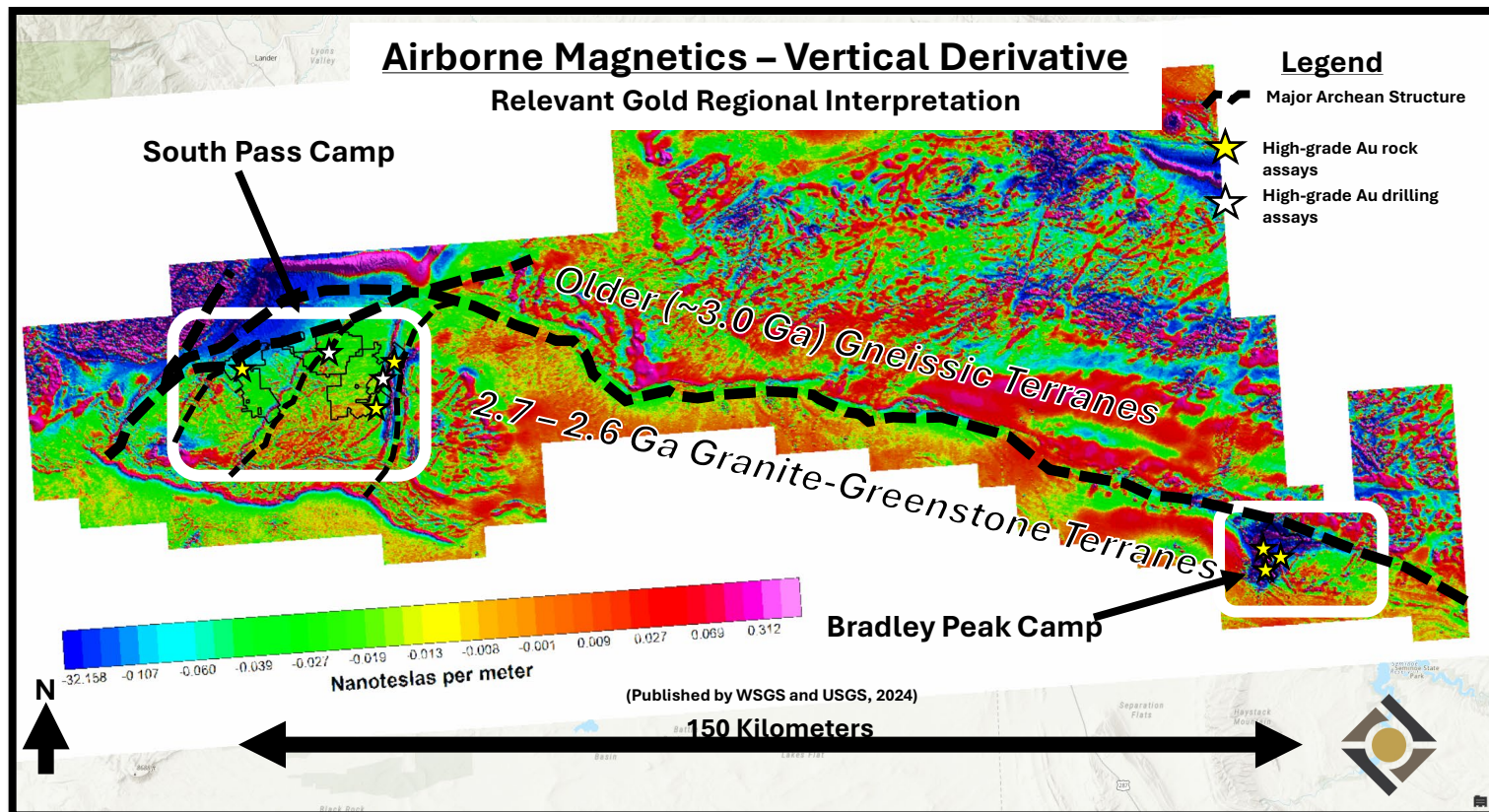
All 12 holes intersected Au where model predicted

- 0.42 g/t Au over 1.35 m
- 0.40 g/t Au over 0.91 m
- 0.23 g/t Au over 0.56 m
- 0.22 g/t Au and 0.19% Cu over 0.43 m
- 0.20 g/t Au over 1.60 m

## BRADLEY PEAK CAMP

150km





In 2024 the Wyoming State Geological Survey released airborne magnetism survey data at no cost to RGC shareholders. Importantly, this data highlighted the connection of South Pass to Bradley Peak along a ~200+ km structural corridor. The survey also revealed a ~100 km<sup>2</sup> geophysical anomaly at Bradley Peak, coincident with our high-grade surface samples.

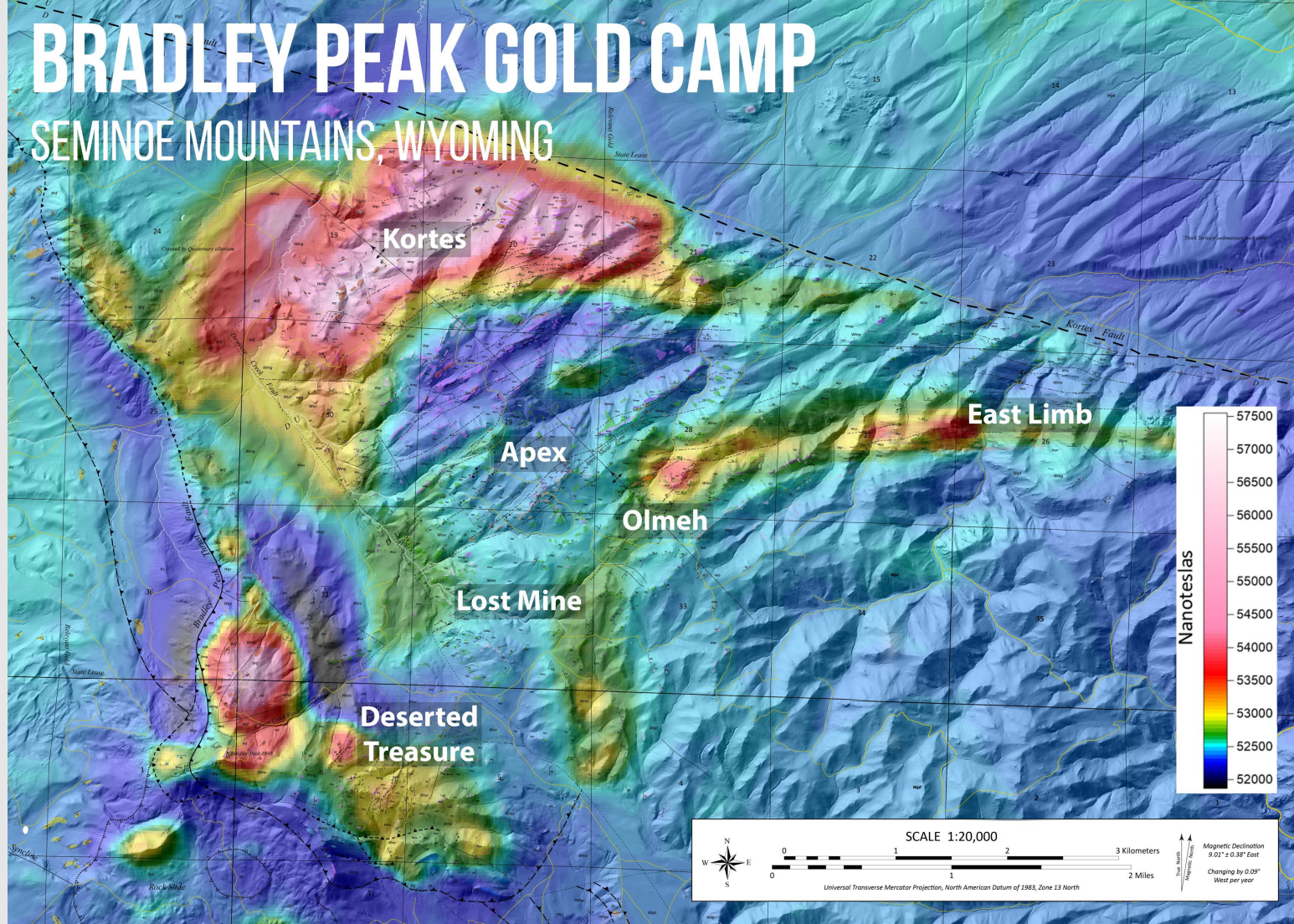






# BRADLEY PEAK GOLD CAMP

SEMINOE MOUNTAINS, WYOMING





[illegible]

# ROCK CHIP GEOCHEMISTRY

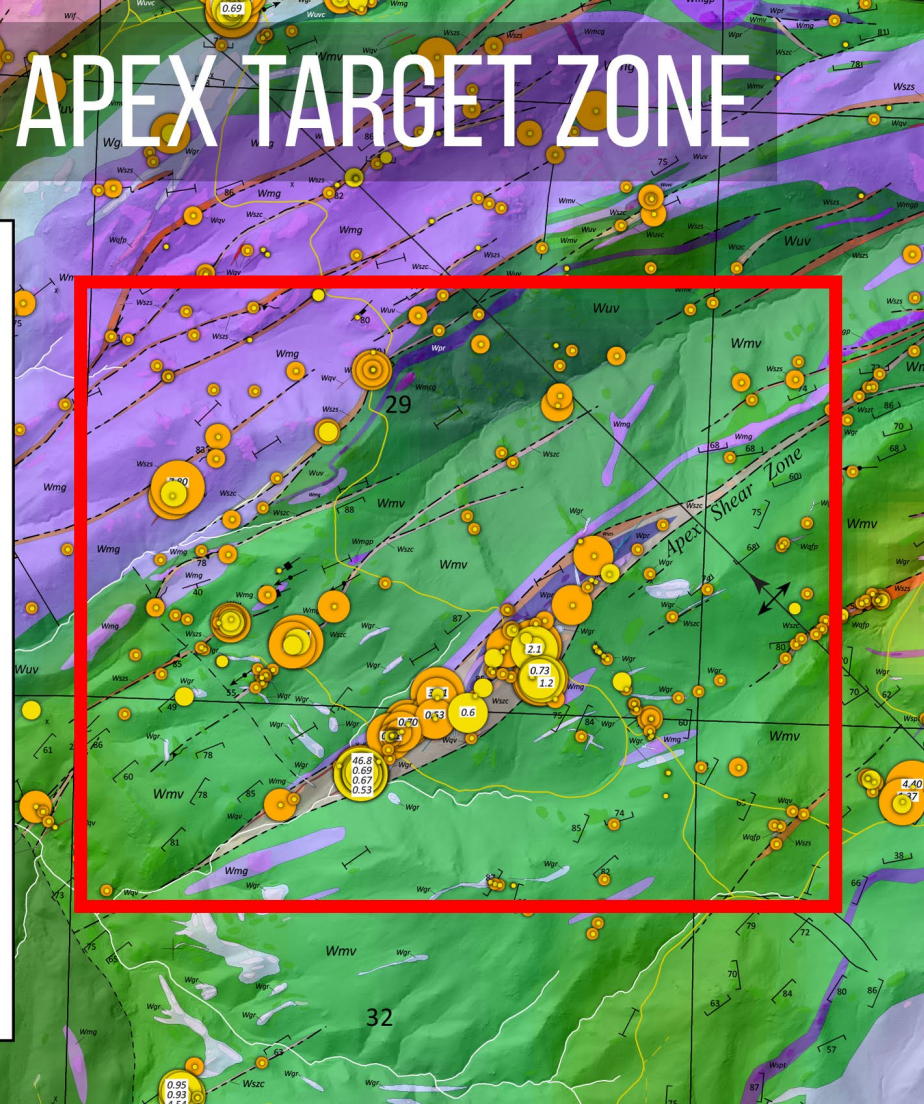
Gold	Copper
0 - 5	0 - 10
6 - 25	11 - 100
26 - 100	101 - 250
101 - 250	251 - 500
251 - 500	501 - 1000
501 - 1,000	1001 - 5,000
1,001 - 5,000	5,001 - 10,000
5,001 - 89,300	10,001 - 62,500

*Samples with > 500 ppb AU are labeled in g/t (ppm) on the map*

*Samples with > 5000 ppm CU are labeled in weigh percent (%) on the map*

0 1 Km

N  
W E S





# APEX TARGET 2025 DRILL RESULTS

BPEX Shear Zone

## Program Summary

- 5,102 m program; 12 holes
- Oriented HQ diamond drilling
- ~150–200 m hole spacing
- Tested ~600 m strike, ~400 m depth

## Drilling Legend

- Collar
- Trace
- Drillholes
- Gold Assays
- Au (ppm)
- <0.015
  - 0.015 - 0.050
  - 0.051 - 0.100
  - 0.101 - 0.250
  - 0.251 - 0.500

## Trace Element Anomaly

- Au + (As-Bi-Mo-Sb-Te-W)
- (hole 25AP-012 awaiting trace element data)

0 100 200 300

Meters

UTM Nad 83, Zone 13 North

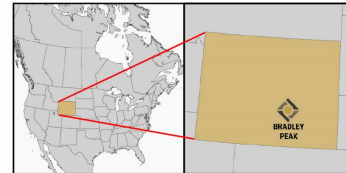
Figure 1.

APEX Shear Zone

Rock Chip Sample Highlights:  
2.1 g/t Au at historic Sunday Morning prospect

Rock Chip Sample Highlights:  
46.8 g/t Au, 2.44% Cu

## Project Location



## Geologic Legend

### Proterozoic

Diabase dikes

### Archean

Granitic dikes/plugs

Auriferous quartz veins

Quartz-feldspar porphyry

Sericite-fuchsite schists

Chlorite-actinolite schists

Peridotite and serpentinites

Gabbroic intrusions

Metabasalts

Darkened areas are mapped outcrops

## Planar Features

Foliation (inclined, vertical)

Shearing (inclined, vertical)

## Linear Features

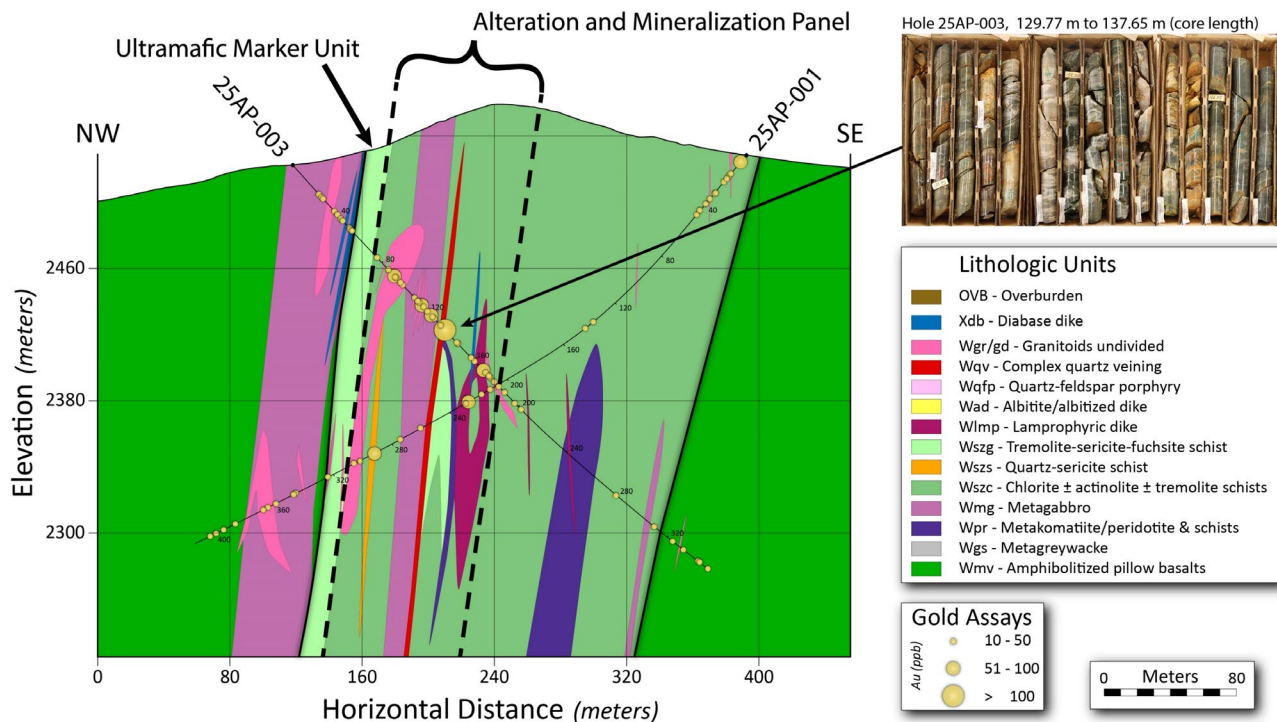
Lineations (mineral, fold axis)

Fault

Shear zone



# APEX TARGET 2025 DRILL RESULTS



## APEX DRILL PROGRAM

- 5,102 m of drilling, 12 holes
- All holes intersected anomalous gold
- Strong alteration + pathfinder halo
- Parallel BPEX shear confirmed
- System open along strike + depth
- Early-stage vectors defined
- Ore shoot targeting in 2026

## INTERCEPTS:

- 0.42 g/t Au over 1.35 m
- 0.40 g/t Au over 0.91 m
- 0.23 g/t Au over 0.56 m
- 0.22 g/t Au and 0.19% Cu over 0.43 m
- 0.20 g/t Au over 1.60 m

**RELEVANT GOLD**

TSXV:RGC | OTCQB:RGCCF



# GRANT-FUNDED EXPLORATION

## Strategic Support from Wyoming

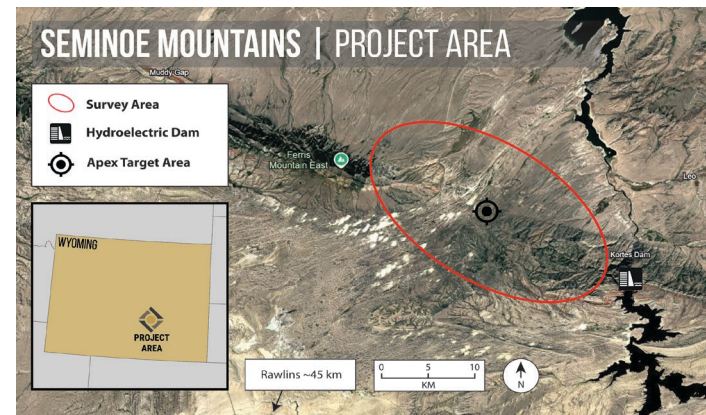
- Awarded a **\$226,533 matching grant** from the Wyoming Energy Matching Funds (EMF) program.
- Grant supports up to 50% of the cost for a **helicopter-borne Time-Domain Electromagnetic (TEM) survey** at Bradley Peak.

## Cutting-Edge Geophysical Technology

- TEM survey will map conductivity and resistivity **up to 500 m depth**—crucial for detecting geophysical signatures related to gold, copper, nickel, zinc, and other critical minerals.
- The Seminoe Mountains share **similarities with Canada's prolific Abitibi Gold Belt**, where similar surveys have been used to great success.

## Benefits to Shareholders

- This **non-dilutive funding** will allow RGC to conduct this survey at a fraction of the cost.
- Builds upon 2024 airborne magnetic data, **further defining a >100 km<sup>2</sup> structural fold** near the Oregon Trail Structural Belt
- Survey aims to **streamline drill targeting** and accelerate new discoveries across the Bradley Peak Gold Camp.



**Above:** Map of the Seminoe Mountain region. A red ellipse indicates the approximate project area. **Below:** Example of helicopter-borne TEM survey equipment in flight.







# APEX/BPEX NEXT STEPS 2026 PLAN

## DOWN PLUNGE TARGETING

- Follow structural corridors below 400-500 m
- Focus on flexures, jogs, fold hinges

## ADDITIONAL SHEAR ZONES

- BPEX step outs
- Testing emerging parallel shears from mapping + magnetics

## NEW GEOPHYSICS & MODELLING

- VTEM and Magnetics
- Pathfinder Geochem Integration
- 3D Structural Updates

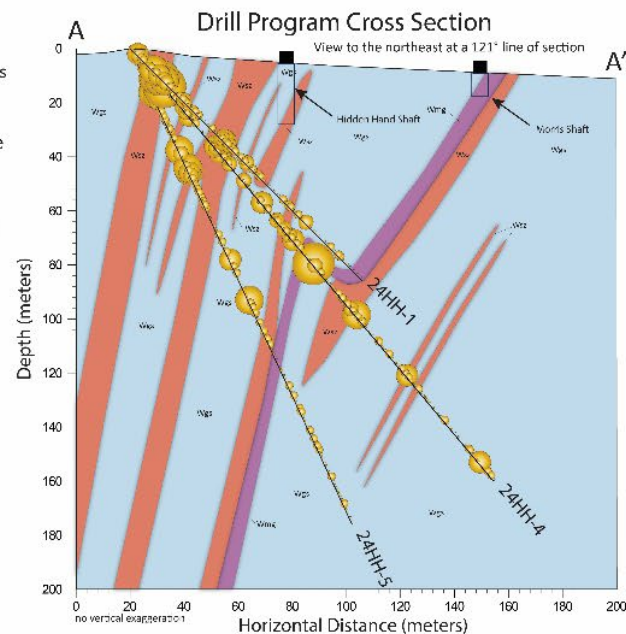
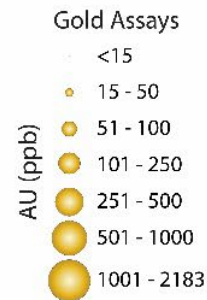
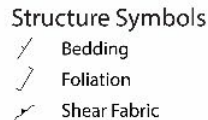
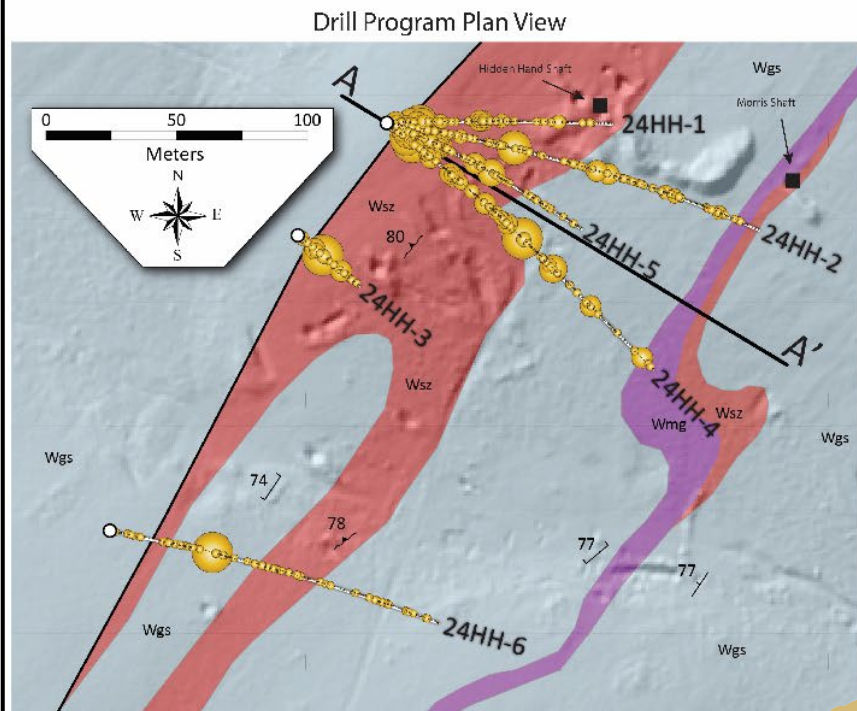






# 2024 BURR TARGET DRILLING MAP & SECTION

## BURR TARGET | 2024 DRILL PROGRAM OVERVIEW



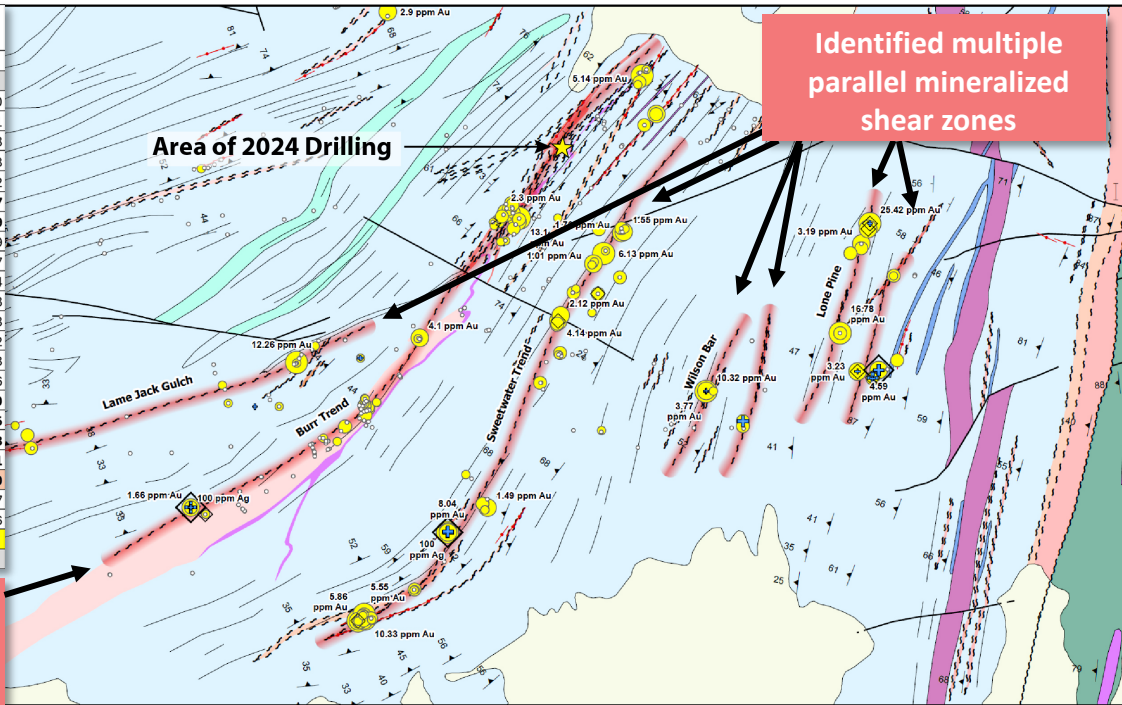
# LEWISTON ROCK CHIP SAMPLING RESULTS

25.42 g/t Au + 12.7% Cu +  
2,203 g/t Ag + 4.3% Pb

## Lewiston: Highlighted Sample Results

Sample ID	Au (ppm)	Ag (ppm)	Cu (ppm)	Pb (ppm)
C0413739	25.42	7.42	1684	170
C0413727	16.78	1.98	78.4	152.1
C0413847	13.10	0.59	41.9	5.3
C0413578	12.26	0.79	28	24.8
C0413590	10.33	0.84	167.9	2.2
C0413814	10.32	3.35	280.3	1727
C0413594	8.04	603	64360	2549
C0413891	6.13	0.55	80	7.9
C0413591	5.86	1.45	1305	356.7
C0413697	5.55	0.67	378.2	23.4
C0413911	5.14	0.07	44.7	9.3
C0413718	4.59	>100	>10000	679.3
C0413870	4.15	0.44	2494	16.2
C0413501	4.10	0.46	44.3	21.3
C0413699	4.07	0.3	158.5	4.6
C0413816	3.77	2.83	199.2	1460
C0413560	3.23	8.15	1513	7905
C0413804	2.42	>100	>10000	2243
C0413719	2.37	>100	>10000	3471
C0413611	1.66	2203	127150	43400
C0413738	1.24	1.41	1431	52.7
C0413612	0.18	9.91	15730	890.6
C0413717	0.36	13.02	3114.2	>10000

Extended the Burr  
mineralized trend by  
>2.5 km



## Geologic Legend

### Cenozoic

Tsp - South Pass Formation  
(Miocene-Pliocene)

### Proterozoic

Xdb - Diabase dike  
Xqd - Quartz-diorite dike

### Sheared Rocks

Wszm  
Wszu  
Wszq  
Wszs - Shear Zone: Sericite-dominant  
Wszc - Shear Zone: Chlorite-dominant

### Intrusive Rocks

Wmg - Metagabbro sills

### Miners Delight Formation

Wmm - Mixed member; wacke-schist-volcanics conglomerate  
Wgs - Greywacke-slate and its schistose metamorphic equivalents  
Wmva - Mafic metavolcanic rocks

## Sampling Legend

### Gold Assays

Au (ppm)  
○ -0.01 - 0.05  
● 0.06 - 0.10  
● 0.11 - 1.00  
● 1.01 - 5.00  
● 5.01 - 25.42

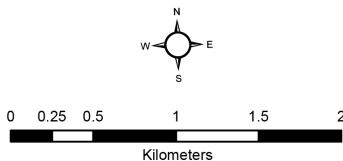
### Silver Assays

Ag (ppm)  
+ 0.02 - 2.00  
+ 2.01 - 16.00  
+ 16.01 - 100.00

### Copper Assays

Cu (ppm)  
◇ 2 - 1000  
◇ 1001 - 5000  
◇ 5001 - 10000

## Project Location



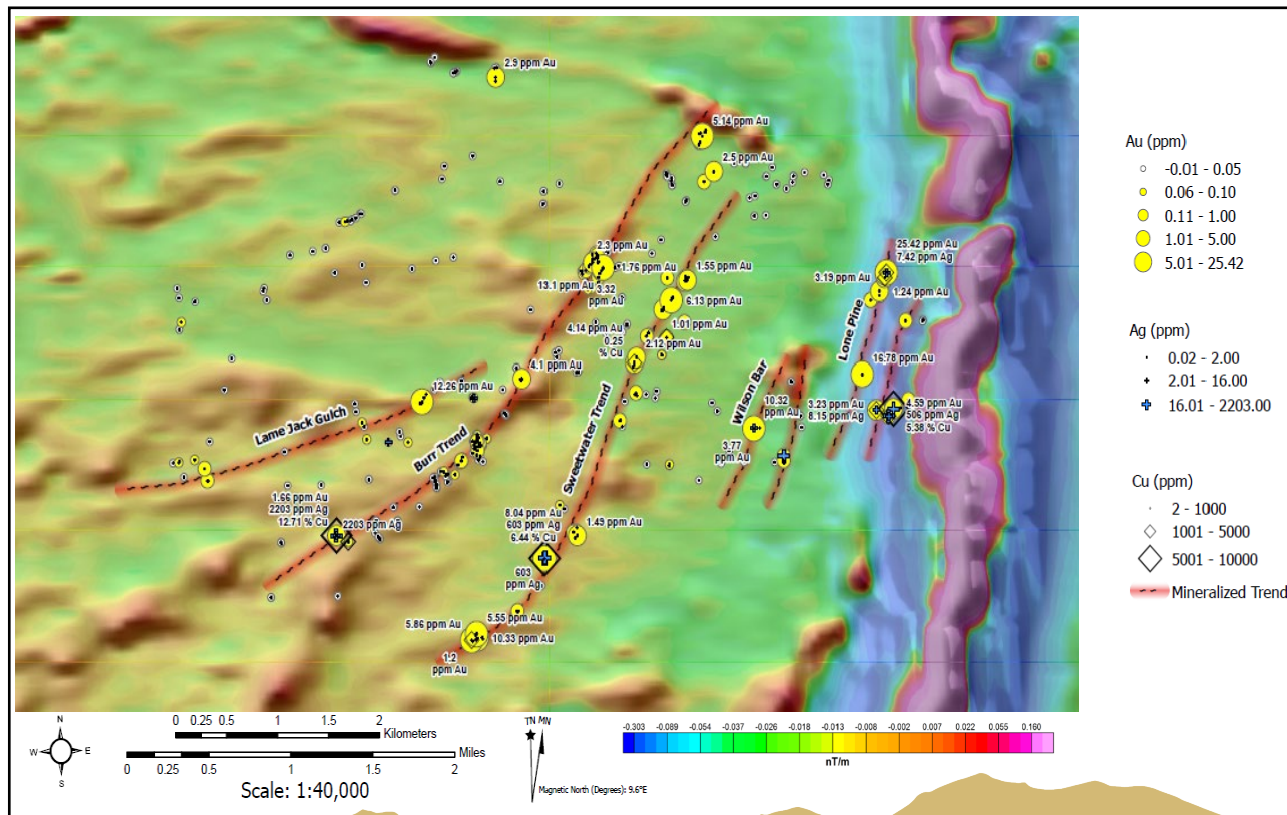
## Planar Features

Quartz Vein  
Foliation: Inclined  
Foliation: Vertical  
Bedding: Inclined  
Shear Fabric: Inclined  
Structural Formlines  
Mineralized Trend





# 2025 BURR TARGET ROCK CHIP SAMPLES



- Extended Burr Trend >2.5 km
- Confirmed 5 additional mineralized trends
- High-grade, multi-metal signatures:
  - 25.4 g/t Au
  - 2,203 g/t Ag
  - 12.7% Cu
  - 4.3% Pb
- Magnetic data highlights mineralized trends
- VTEM geophysics data being processed now
- Drill planning underway for 2026/2027





# PROOF OF CONCEPT

Orogenic Gold Checklist; RGC district-scale exploration checks all the boxes

	CRITERIA	DESCRIPTION
✓	Structural Setting	<ul style="list-style-type: none"><li>• Major east-west Archean fault structures cutting across WY</li><li>• Mineralized secondary shear zones</li><li>• Brittle-ductile transition</li><li>• Rheologic contrasts</li><li>• Complex re-folded folds</li></ul>
✓	Host Rock	<ul style="list-style-type: none"><li>• Amphibolites &amp; greenstones</li><li>• Greywackes</li><li>• Carbonate facies iron formation</li></ul>
✓	Alteration	<ul style="list-style-type: none"><li>• Chlorite, Carbonate, Sericite, Epidote, Sulfidation, Silica</li></ul>
✓	Geochemistry	<ul style="list-style-type: none"><li>• Au, Ag, As, Bi, Cu, Sb, Pb, Zn</li></ul>
✓	High-Grade Mineralization	<ul style="list-style-type: none"><li>• Archean Orogenic gold style mineralization systems</li><li>• High-grade and visible orogenic gold proven (168 g/t Au)</li></ul>
✓	Land Position	<ul style="list-style-type: none"><li>• 5 district-scale assets across 150 km Archean belt</li><li>• Big enough to host the largest known orogenic type deposits</li><li>• Well established infrastructure, access, water, and power</li></ul>
✓	Scalable Opportunity	<ul style="list-style-type: none"><li>• Connection to Abitibi during gold mineralization (2.65 ba)</li><li>• Multiple high-grade targets with Abitibi-scale potential</li></ul>
✓	Permitting	<ul style="list-style-type: none"><li>• Streamlined State and Federal permitting pathway</li><li>• Multiple exploration permits in hand</li><li>• Wyoming has deep roots in mining and natural resources</li></ul>



\*2020 Trench sample collected by Golden Buffalo Mining Company





# IN THE PAST 18 MONTHS:

- ✓ Closed a \$2.9M financing and **welcomed Kinross Gold as 9.9% Strategic**
- ✓ Conducted widespread geologic mapping and sampling at Bradley Peak
  - Results highlighted by **46.8 g/t Au, 7.8% Cu, 2% Zn** (rock chips)
- ✓ Doubled our land position at Bradley Peak to ~10,800 acres
- ✓ Permitted and Drilled 1,026 m at the Burr Target (Lewiston)
  - Results highlighted by **2.2 g/t Au over 1.5 m, and 23 m averaging 0.13 g/t Au.** (core length)
- ✓ Closed an oversubscribed \$8.5M financing; **Kinross Gold and Bollinger each increasing ownership to 19.9%**
- ✓ Permitted and drilled a **5,102 m drill program** at Apex Target (Bradley Peak); proven large-scale orogenic gold system
- ✓ Secured at **\$226K grant** from State of Wyoming to support airborne geophysics at Bradley Peak
- ✓ Named Sarah Weber as Independent Board Chair
- ✓ Brought in **\$2.89M** through execution of warrants by **Kinross Gold, William Bollinger, and Management**
- ✓ Extended Burr Target 2.5Km highlighted by **25.4 g/t Au, 2,203 g/t Ag, 12.7% Cu, and 4.3% Pb**
- ✓ Expanded Board and Advisors with additions of Larry Taddei and Mal Karwowska





# LOOKING AHEAD

12 - 24 month milestones towards discovery and definition

- ◆ Integrated 3D targeting across South Pass & Bradley Peak (VTEM, mag, geochem, drilling)
- ◆ Cross-camp ranking to lock-in priority drill targets 2026–27 exploration roadmap
- ◆ Permit upgrades and expansions
- ◆ Phase 2 and follow-up drilling at Apex/BPEX, Lewiston & Golden Buffalo
- ◆ Regional target refinement via mapping, sampling, and advanced geophysics.
- ◆ First-pass drilling at Shield-Carissa as warranted;
- ◆ Advance best system toward resource drilling
- ◆ Capital discipline: develop treasury strength and maintain strong shareholder base

*\*Sunset Photo from the Apex Target Area, Bradley Peak Camp, Wyoming*







# WHY INVEST?

## DISTRICT-SCALE CONTROL IN A TIER 1 JURISDICTION

>50K Acres covering  
Archean belt with multiple  
camp-scale systems under  
single operator control

## HIGH-GRADE OROGENIC GOLD PROVEN AT DEPTH

Multiple drill-tested  
targets confirm high-  
grade gold continuity and  
system fertility

## TIGHTLY HELD, ALIGNED CAPITAL STRUTURE

~119M shares  
outstanding with  
meaningful ownership by  
Kinross, Bollinger, &  
management

## DISCOVERY UPSIDE + EXECUTION ENGINE:

Pipeline of 17 high-grade  
targets supported by  
integrated exploration  
platform through Big Rock  
Exploration

**Relevant Gold: A district-scale gold opportunity with proven systems, aligned capital, and a clear path to discovery in a jurisdiction where mines live and thrive.**





*“Now imagine if you could buy a ticket on the potential to **discover the next Abitibi** — virtually the entire belt — in the mining-friendly jurisdiction of **Wyoming**. That’s exactly the potential that Relevant Gold is offering investors.”*

**Gold**Newsletter

Vol. LI

April 2024

Public domain photo. Gold mine, Lamaque, Abitibi, Quebec 1920



RELEVANT GOLD | CORPORATE PRESENTATION

**RELEVANT GOLD**  
TSXV:RGC | OTCQB:RGCCF



**IF YOU COULD GO BACK AND INVEST  
IN THE ABITIBI BEFORE THE GOLD  
RUSH...**

**HOW MUCH  
WOULD YOU INVEST?**

Public domain photo: Gold mine,  
Lamaque, Abitibi, Quebec 1920







# JOIN US FOR THE NEXT BIG DISCOVERY

[WWW.RELEVANTGOLDCORP.COM](http://WWW.RELEVANTGOLDCORP.COM)

[@RELEVANTGOLDCORP](#)



FOR QUESTIONS & INFORMATION, PLEASE CONTACT:

[investorrelations@relevantgoldcorp.com](mailto:investorrelations@relevantgoldcorp.com)

+1-763-760-4886

**RELEVANT GOLD**

TSXV:RGC | OTCQB:RGCCF