

September 2025



**RELEVANT**  
**GOLD**

TSXV:RGC  
OTCQB:RGCCF



**A BELT-SCALE GOLD OPPORTUNITY IN MINING-FRIENDLY WYOMING**



# CAUTIONARY STATEMENT

This presentation contains certain statements that constitute forward looking information within the meaning of applicable securities laws. These statements relate to future events of Relevant Gold Corp. (“Relevant” or “the Company”). Any statements that express or involve discussions with respect to predictions, expectations, beliefs, plans, projections, objectives, assumptions or future events or performance (often, but not always, using words or phrases such as “seek”, “anticipate”, “plan”, “continue”, “estimate”, “expect”, “forecast”, “may”, “will”, “project”, “predict”, “potential”, “targeting”, “intend”, “could”, “might”, “should”, “believe”, “outlook” and similar expressions) are not statements of historical fact and may be forward looking information. Forward looking information in this presentation includes, but is not limited to, statements with respect to successfully consolidating further land packages, Relevant’s ability to raise sufficient capital to fund exploration programs and its obligations under property agreements, seek a listing on a recognized stock exchange, drilling plans, financing success, discovery and production of minerals, metal prices and currency exchange rates, timing of technical reports and drill results, corporate and technical objectives, permitting success and relationships with stakeholders.

Forward looking information involves known and unknown risks, uncertainties and other factors which may cause the actual results, performance or achievements of the Company to be materially different from any future results, performance or achievements expressed or implied by the forward-looking information. Such risks include, among others, the inherent risk of the mining industry; adverse economic and market developments; the risk that the Company will not be successful in completing additional acquisitions; risks relating to the estimation of mineral resources; the possibility that the Company’s estimated burn rate may be higher than anticipated; risks of unexpected cost increases; risks of labour shortages; risks relating to exploration and development activities; risks relating to future prices of mineral resources; risks related to work site accidents, risks related to geological uncertainties and variations; risks related to government and community support of the company’s projects; risks related to global pandemics and other risks related to the mining industry. The Company believes that the expectations reflected in such forward-looking information are reasonable, but no assurance can be given that these expectations will prove to be correct and such forward-looking information should not be unduly relied upon. These statements speak only as of the date of this presentation. The Company does not intend, and does not assume any obligation, to update any forward-looking information except as required by law.

This document does not constitute an offer to sell, or a solicitation of an offer to buy, securities of the Company in Canada, the United States or any other jurisdiction. Any such offer to sell or solicitation of an offer to buy the securities described herein or during the presentation will be made only pursuant to subscription documentation between the Company and prospective purchasers. Any such offering will be made in reliance upon exemptions from the prospectus and registration requirements under applicable securities laws, pursuant to a subscription agreement to be entered into by the Company and prospective investors.

The scientific and technical contents of this presentation have been approved by Mr. Brian C. Lentz, CPG, Chief Exploration Officer of the Company, who is a “Qualified Person” as defined by Canadian National Instrument 43-101 (Standards of Disclosure for Mineral Projects). Mr. Lentz is not independent of the Company.





# OPPORTUNITY OF SCALE

The Abitibi Gold Belts; Prolific Orogenic Shear Zone Hosted Gold Deposits, > 250 Moz

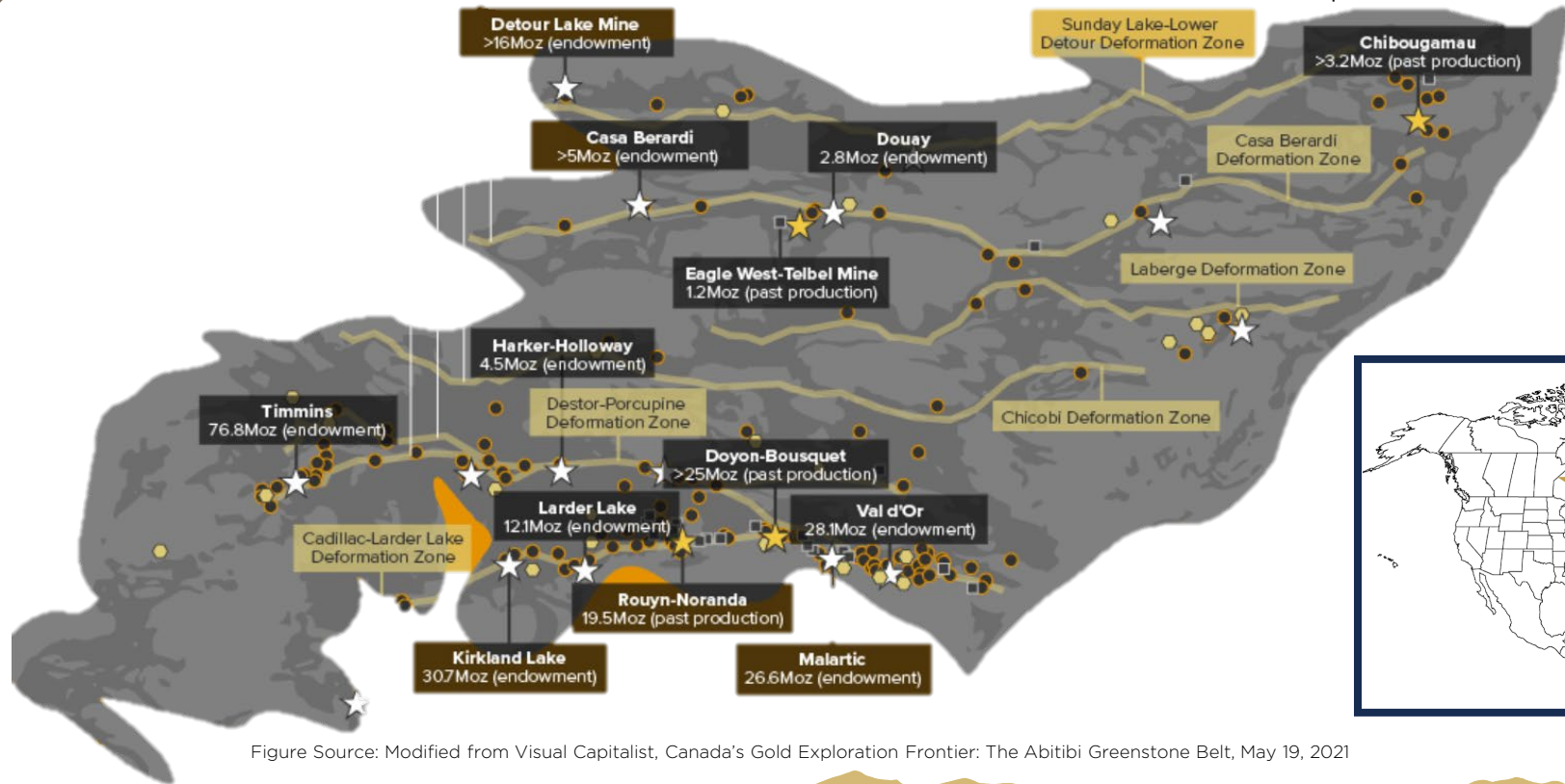


Figure Source: Modified from Visual Capitalist, Canada's Gold Exploration Frontier: The Abitibi Greenstone Belt, May 19, 2021





*“Now imagine if you could buy a ticket on the potential to **discover the next Abitibi** — virtually the entire belt — in the mining-friendly jurisdiction of **Wyoming**. That’s exactly the potential that Relevant Gold is offering investors.”*

**Gold**Newsletter

Vol. LI

April 2024

Public domain photo. Gold mine, Lamaque, Abitibi, Quebec 1920



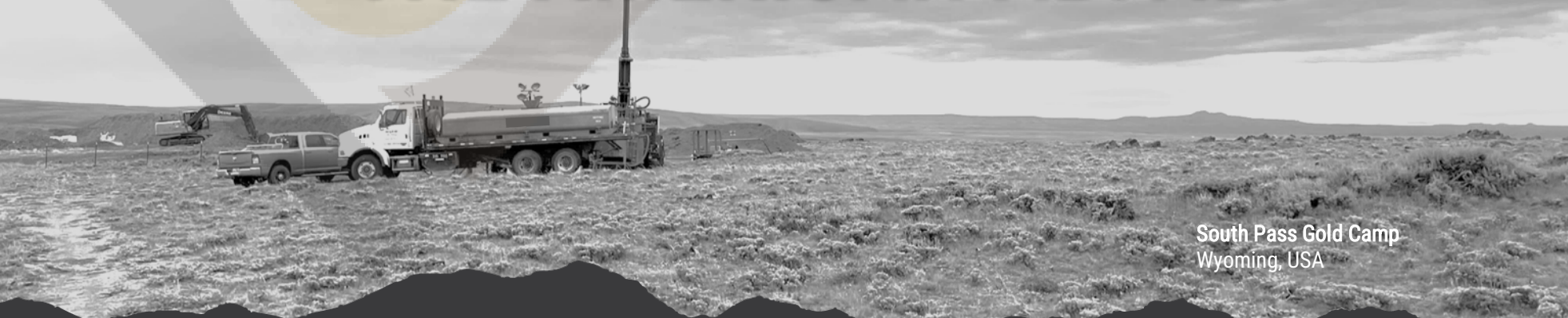
RELEVANT GOLD | CORPORATE PRESENTATION

**RELEVANT GOLD**  
TSXV:RGC | OTCQB:RGCCF





# A UNIQUE DISCOVERY OPPORTUNITY IN **THE AMERICAN ABITIBI**



South Pass Gold Camp  
Wyoming, USA



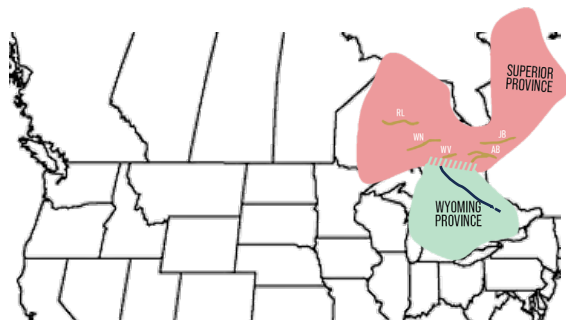


# ABITIBI THESIS

SCAN FOR ANIMATION

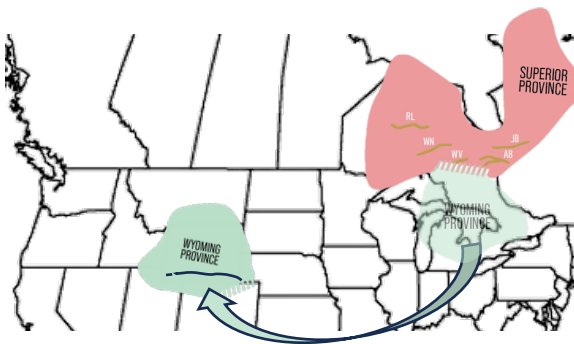


~2.65 BILLION YEARS AGO



The Wyoming Province and the Superior Province (Abitibi) were connected when gold mineralization occurred. (Chamberlain et. al. 2006)

~2.1 BILLION YEARS AGO



Continental rifting caused the Wyoming Province to begin to separate, rotate, and move to its current location over many millions of years.

MODERN DAY



Relevant Gold applied these insights to secure the most prospective ground in Wyoming and is pursuing the next great orogenic gold discovery.





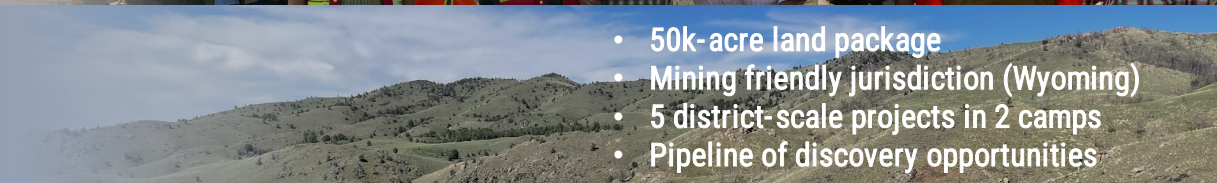
# DEVELOPING THE AMERICAN ABITIBI

## WORLD CLASS TEAM



Led by a team that has created \$Billions in shareholder value and is credited with multiple multi-Moz gold and silver discoveries

## BELT-SCALE PORTFOLIO



- 50k-acre land package
- Mining friendly jurisdiction (Wyoming)
- 5 district-scale projects in 2 camps
- Pipeline of discovery opportunities

## STRONG CORPORATE STRUCTURE

~103M shares outstanding. Key shareholders include:

**KINROSS**

Mr. William Bollinger Mr. Rob McEwen

## HIGH-GRADE PIPELINE



- 4 exploration permits
- 17 district-scale targets
- 2 drill-proven orogenic systems
- High-grade gold + silver + copper + zinc



# MEET THE TEAM

## BOARD OF DIRECTORS



### INDEPENDENT BOARD CHAIR

**Sarah Weber**

20+ Years Experience  
P. Geo / MBA

CEO, C3 Alliance Corp.



### INDEPENDENT DIRECTOR

**Dr. Peter Megaw, PhD.**

40+ Years Experience  
PhD., Economic Geology

Cofounder, MAG Silver Corp.

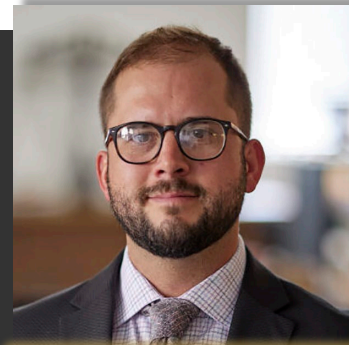


### INDEPENDENT DIRECTOR

**Ronald L. Parratt**

40+ Years Experience  
M.Sc. Economic Geology

Cofounder, Auex Ventures, Inc.



### DIRECTOR, CEO

**Rob Bergmann**

15+ Years Experience  
B.Sc. Geology

Founder, Relevant Gold Corp.



### DIRECTOR, CXO

**Brian Lentz**

15+ Years Experience  
B.Sc. Geology / P. Geo

Founder, Relevant Gold Corp.

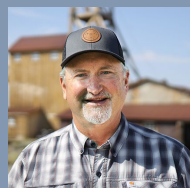
## MANAGEMENT



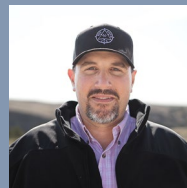
**Mahesh Liyanage**  
RGC CFO



**Kristopher Jensen**  
VP Corporate Comms.



**Jerome Hutchison**  
Community Advisor



**Jacob Tyra**  
Operations Manager



**Dr. Dean Peterson, PhD**  
Technical Advisor



**Dr. Thomas Campbell, PhD**  
Technical Advisor



**Dr. Kevin Chamberlain, PhD**  
Technical Advisor



FULL BIOS CAN BE FOUND AT [RELEVANTGOLDCORP.COM](https://relevantgoldcorp.com)

**RELEVANT GOLD**  
TSXV:RGC | OTCQB:RGCCF





# CORPORATE STRUCTURE

## MARKET SUMMARY: (as of 7/17/2025)

Market Capitalization: ~\$36M  
Avg. Volume: ~43K shares per day  
52 week high/low: \$0.47/\$0.215

## SHARE BREAKDOWN:

Issued and Outstanding: 103,119,859  
Reserved for Issuance: 30,736,890\*

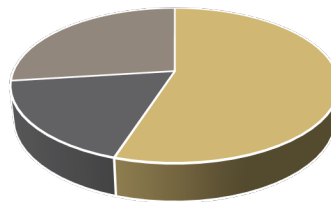
\* Includes:

Founder's Warrants:	12,000,000 @ \$0.13	Expire 2025	\$1,560,000
Management/Board Options:	3,750,000 @ \$0.35	Expire 2027	\$1,312,500
Management/Board Options:	3,400,000 @ \$0.34	Expire 2030	\$1,156,000
General Warrants:	11,586,890 @ \$0.35	Expire 2026	\$4,055,411

Public Float: 29.4% (>30M free trading shares)

## MAJOR SHAREHOLDERS: (as of 3/13/2025 financing)

- + Management (>15%)
- + Kinross Gold (19.9%)
- + Mr. William Guest Bollinger (19.9%)
- + Mr. Rob McEwen
- + Ultra High Net Worth Individuals
- + Retail Investors



Approximate Ownership Breakdown

- Management and Insiders
- Major Holders
- Retail Investors

**RELEVANT GOLD**

TSXV:RGC | OTCQB:RGCCF





# TRADING PROFILE

RGC SHARE PERFORMANCE SINCE JANUARY 1, 2025



\*Chart date: 9/8/2025

**RELEVANT GOLD**

TSXV:RGC | OTCQB:RGCCF





# FINANCIAL SNAPSHOT

**CASH ON HAND:**  
~\$7.5M CAD\*

\*as of June 2025

**BURN RATE:**  
\$97K / month

**TOTAL CAPITAL RAISED:**  
\$23.8M  
(since 2020)

**FINDERS FEES PAID:**  
\$249K\*  
(since 2020)

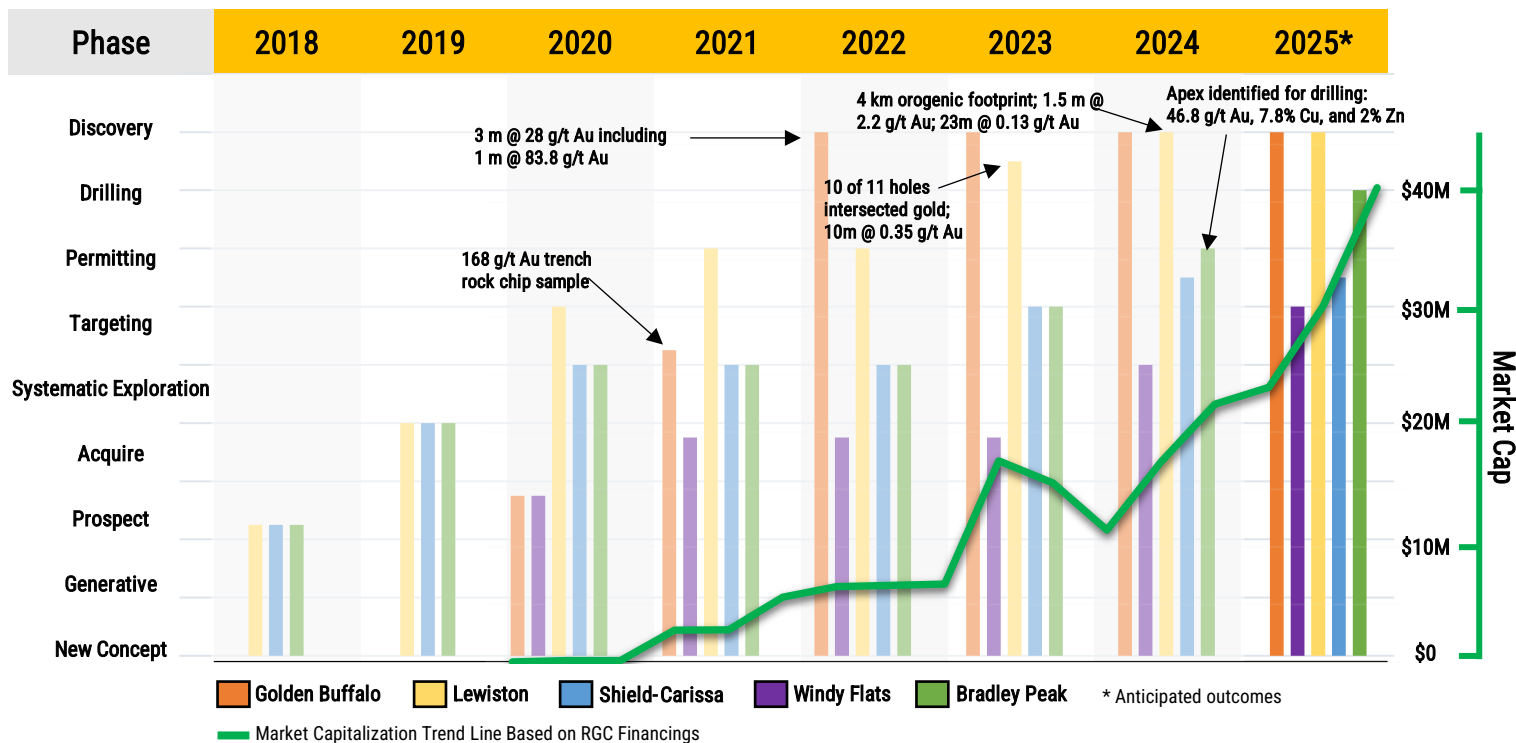
**SIMPLE COST OF  
CAPITAL:**  
1.05%

**FY24 USE OF  
PROCEEDS:**  
<17.5%  
G&A  
>68.7%  
exploration/evaluation





# APPROACH | SYSTEMATIC EXPLORATION

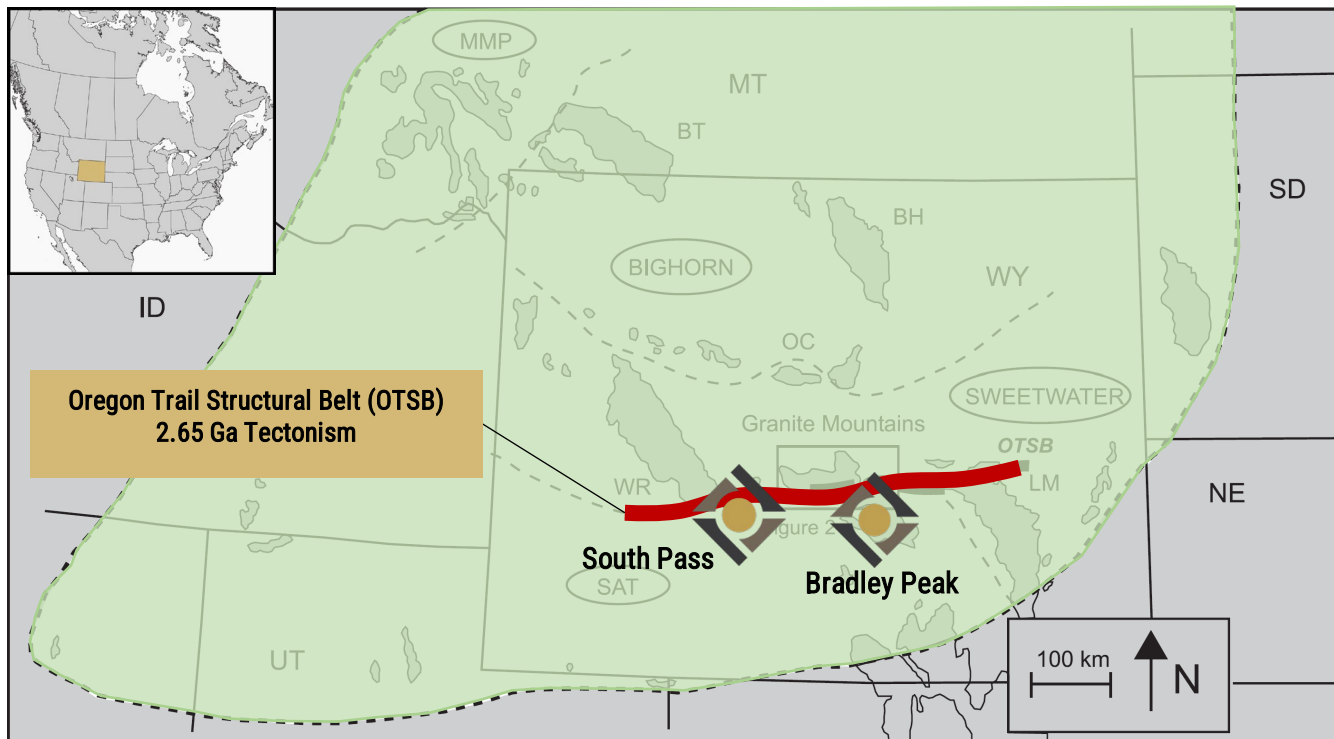






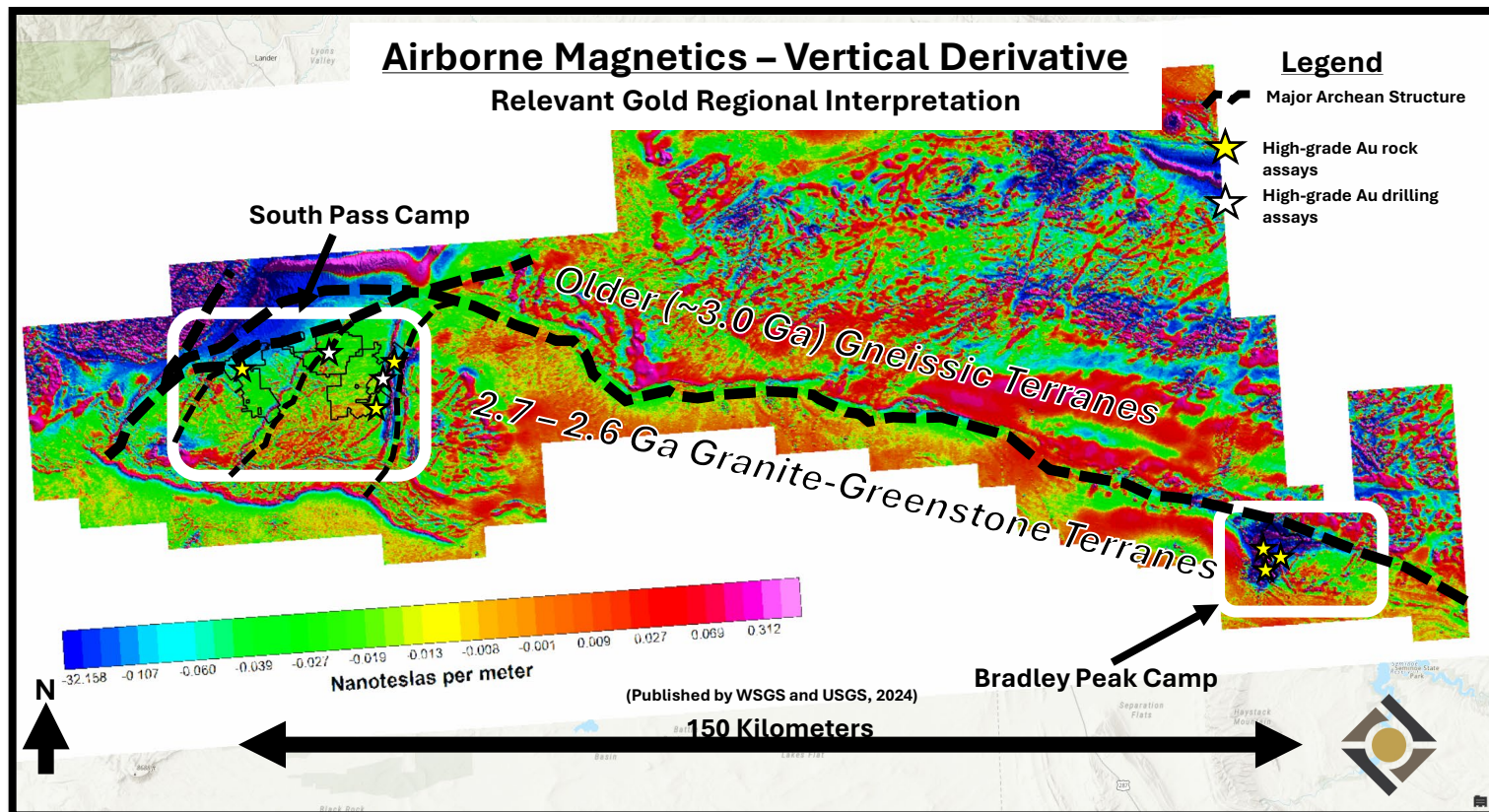
# PORTFOLIO AT A GLANCE

2 GOLD CAMPS, 5 DISTRICT-SCALE PROJECTS,  
17 HIGH-GRADE TARGETS



\*Figure modified from Chamberlain et. al. 2006





In 2024 the Wyoming State Geological Survey released airborne magnetism survey data at no cost to RGC shareholders. Importantly, this data highlighted the connection of South Pass to Bradley Peak along a ~200+ km structural corridor. The survey also revealed a ~100 km<sup>2</sup> geophysical anomaly at Bradley Peak, coincident with our high-grade surface samples.

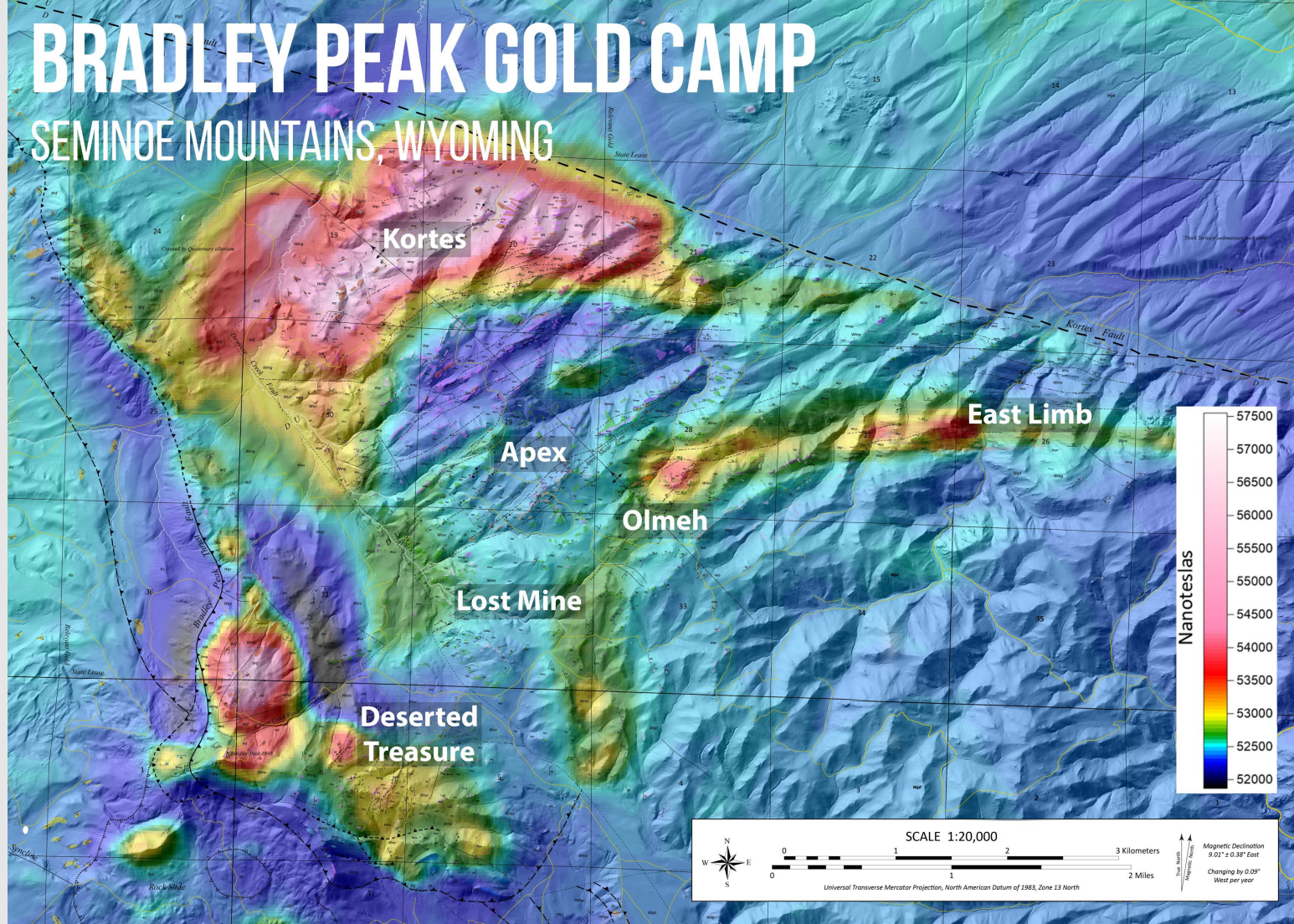






# BRADLEY PEAK GOLD CAMP

SEMINOE MOUNTAINS, WYOMING

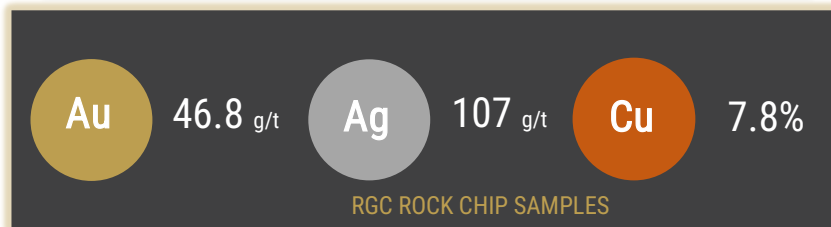
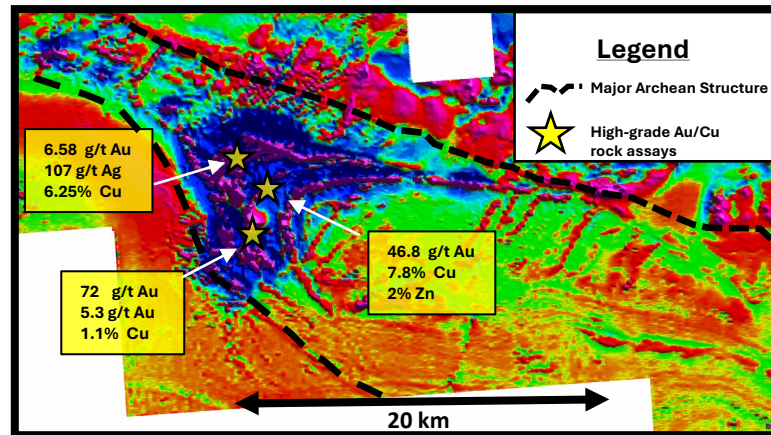




# BRADLEY PEAK GOLD CAMP

	Criteria	Description
✓	Structural Setting	<ul style="list-style-type: none"> <li>Major shear zones</li> <li>Brittle-ductile transition</li> <li>Complex re-folded folds</li> <li>Rheologic contrasts</li> </ul>
✓	Host Rock	<ul style="list-style-type: none"> <li>Amphibolites &amp; greenstones</li> <li>Carbonate facies Iron Formation</li> <li>Maifc and felsic intrusives</li> <li>Komatiites</li> </ul>
✓	Alteration	Chlorite, Carbonate, Sericite, Epidote, Sulfidation & Silica
✓	Geochemistry	Au, Ag, As, Bi, Cu, Sb, Pb & Zn
✓	Mineralization	<ul style="list-style-type: none"> <li>Orogenic and intrusion-related gold mineralization systems</li> <li>Confirmed sulfide assemblage related to mineralization</li> </ul>
✓	Land Position	<ul style="list-style-type: none"> <li>100% RGC ownership of 281 contiguous unpatented active BLM claims</li> <li>Rural sub-mountainous terrane</li> <li>~50miles from well established town and infrastructure</li> </ul>
✓	Scalable Opportunity	<ul style="list-style-type: none"> <li>Multiple district-scale targets</li> <li>RGC controls 98% of the entire greenstone belt camp</li> </ul>
✓	Permitting	Streamlined State +/- Federal permitting pathway

Magnetic Survey – Vertical Derivative at Bradley Peak Camp



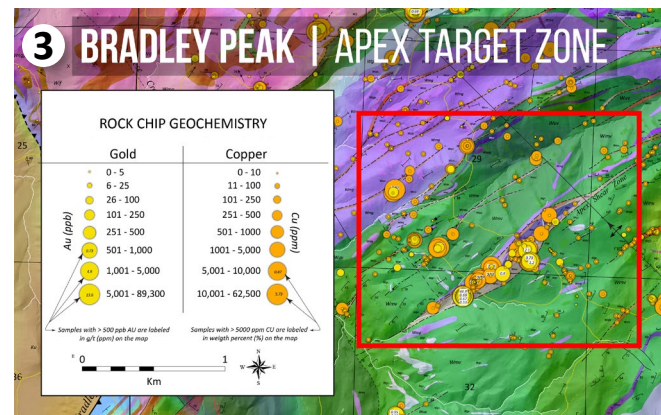
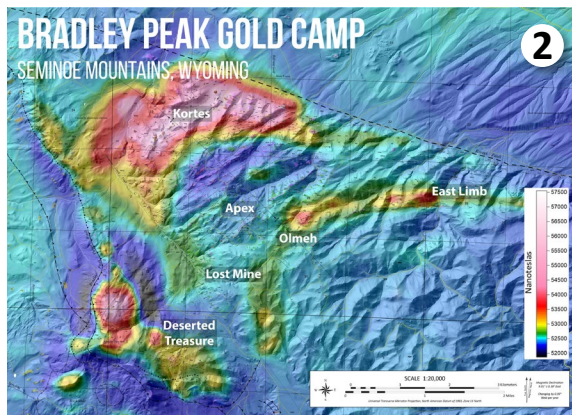
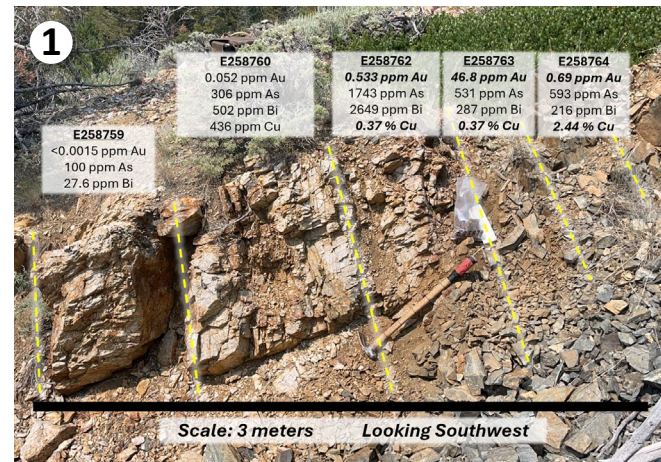




# WHY WE LIKE APEX

## HIGH-GRADE, POLY-METALLIC TARGET IN THE HEART OF BRADLEY PEAK

- 1 2024 rock chip sampling at Apex returned multiple >1 g/t Au results, including standout grades up to **46.8 g/t Au**, **7.8% Cu**, **2% Zn** in outcrop.
- 2 2024 airborne geophysics data depicts a massive **100+ km<sup>2</sup> fold hinge anomaly** centered over Apex.
- 3 >**2.5 km trend** of mineralized structure at Apex. Geology at Apex features a complex array of sheared mafic and ultramafic rocks cut by stockwork quartz veining and widespread alteration—**hallmarks of large-scale orogenic gold systems**.





[illegible]

# ROCK CHIP GEOCHEMISTRY

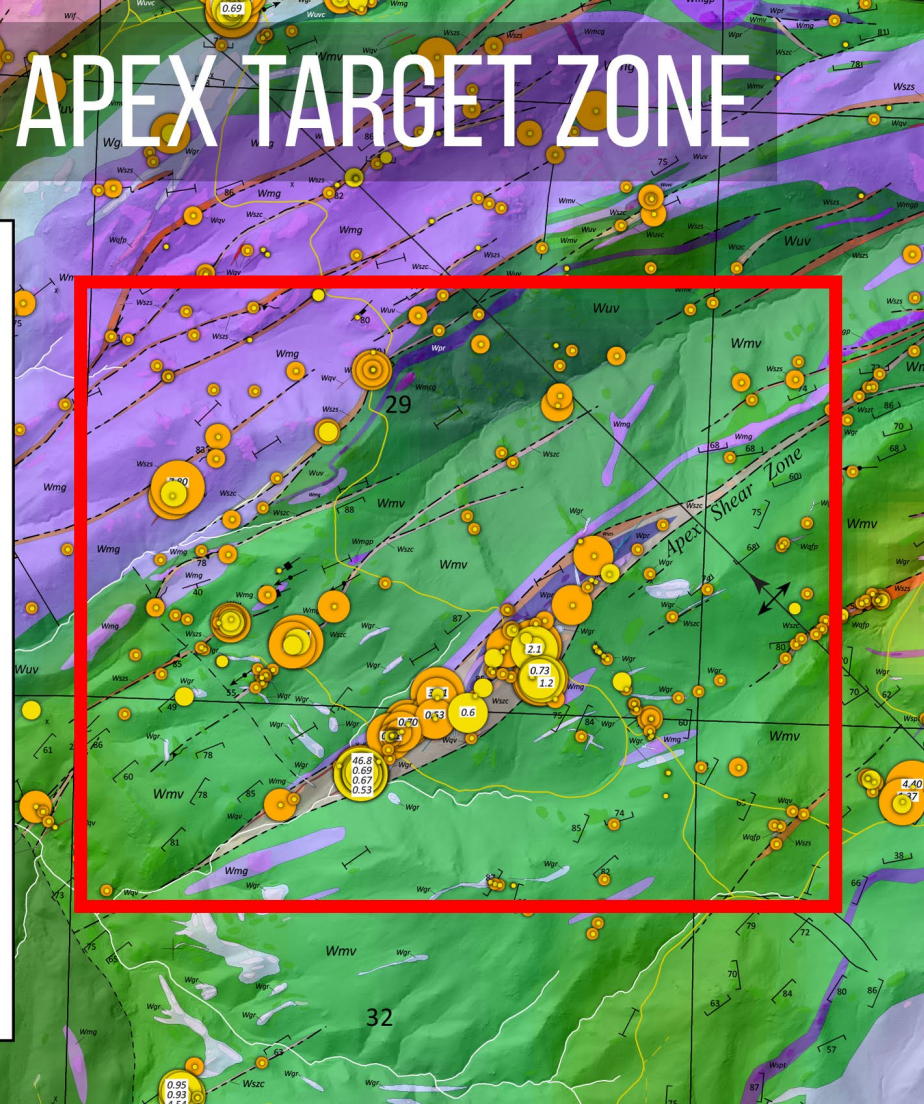
Gold	Copper
0 - 5	0 - 10
6 - 25	11 - 100
26 - 100	101 - 250
101 - 250	251 - 500
251 - 500	501 - 1000
501 - 1,000	1001 - 5,000
1,001 - 5,000	5,001 - 10,000
5,001 - 89,300	10,001 - 62,500

*Samples with > 500 ppb AU are labeled in g/t (ppm) on the map*

*Samples with > 5000 ppm CU are labeled in weigh percent (%) on the map*

0 1 Km

N  
W E S





# APEX DRILL PROGRAM

## APEX DRILL PROGRAM

- 5,000 m program of HQ-sized, oriented diamond drilling
- 15 to 25 drill holes inclined 50° - 90°; depths from 150-500 m
- Drill program will seek to:
  - **Confirm** the vertical continuation at depth of favorable surface geology and structures.
  - **Evaluate** the hanging wall and footwall contacts.
  - **Identify** the alteration (progressions, continuity, profiles, rock types, structures, mineralization, etc).
  - **Test** the continuation, quantity, size and scale of quartz veining at depth.
  - **Classify** the presence of high-grade gold and copper at depth, along with vector element geochemistry, to understand the location and potential of ore shoots.

**Figure 1.** Three-dimensional (3D) Leapfrog model of some drill hole plan options with surface geology draped over high resolution LiDAR. Actual drill holes will be determined throughout the program based on the geology and data observed. **Figure 2:** Drilling has commenced at the Apex Target in the Bradley Peak Gold Camp.

APEX TARGET | VIEW LOOKING NORTHEAST

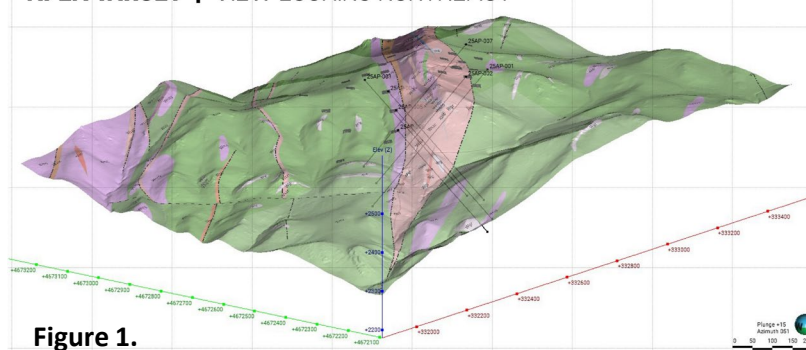


Figure 1.



Figure 2.







# GRANT-FUNDED EXPLORATION

## Strategic Support from Wyoming

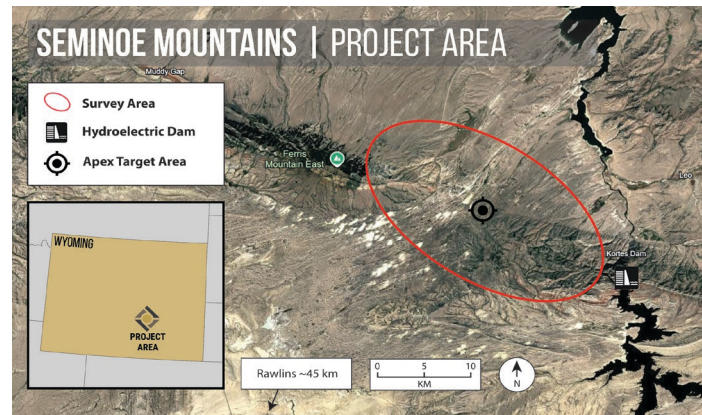
- Awarded a **\$226,533 matching grant** from the Wyoming Energy Matching Funds (EMF) program.
- Grant supports up to 50% of the cost for a **helicopter-borne Time-Domain Electromagnetic (TEM) survey** at Bradley Peak.

## Cutting-Edge Geophysical Technology

- TEM survey will map conductivity and resistivity **up to 500 m depth**—crucial for detecting geophysical signatures related to gold, copper, nickel, zinc, and other critical minerals.
- The Seminoe Mountains share **similarities with Canada's prolific Abitibi Gold Belt**, where similar surveys have been used to great success.

## Benefits to Shareholders

- This **non-dilutive funding** will allow RGC to conduct this survey at a fraction of the cost.
- Builds upon 2024 airborne magnetic data, **further defining a >100 km<sup>2</sup> structural fold** near the Oregon Trail Structural Belt
- Survey aims to **streamline drill targeting** and accelerate new discoveries across the Bradley Peak Gold Camp.



**Above:** Map of the Seminoe Mountain region. A red ellipse indicates the approximate project area. **Below:** Example of helicopter-borne TEM survey equipment in flight.







# IN THE PAST 12 MONTHS:

- ✓ Closed a \$2.9M financing and welcomed Kinross Gold as 9.9% Strategic
- ✓ Conducted widespread geologic mapping and sampling at Bradley Peak
  - Results highlighted by **46.8 g/t Au, 7.8% Cu, 2% Zn** (rock chips)
- ✓ Doubled our land position at Bradley Peak to ~10,800 acres
- ✓ Permitted and Drilled 1,026 m at the Burr Target (Lewiston)
  - Results highlighted by **2.2 g/t over 1.5 m, and 23 m averaging 0.13 g/t Au.** (core length)
- ✓ Closed an oversubscribed \$8.5M financing with Kinross Gold and Mr. William Bollinger each increasing ownership to 19.9%
- ✓ Permitted and commenced drilling on a **5,000 m drill program** at our Apex Target (Bradley Peak)
- ✓ Secured at **\$226K grant** from State of Wyoming to support airborne geophysics at Bradley Peak





# PROOF OF CONCEPT

Orogenic Gold Checklist; RGC district-scale exploration checks all the boxes

	CRITERIA	DESCRIPTION
✓	Structural Setting	<ul style="list-style-type: none"> <li>Major east-west Archean fault structures cutting across WY</li> <li>Mineralized secondary shear zones</li> <li>Brittle-ductile transition</li> <li>Rheologic contrasts</li> <li>Complex re-folded folds</li> </ul>
✓	Host Rock	<ul style="list-style-type: none"> <li>Amphibolites &amp; greenstones</li> <li>Greywackes</li> <li>Carbonate facies iron formation</li> </ul>
✓	Alteration	<ul style="list-style-type: none"> <li>Chlorite, Carbonate, Sericite, Epidote, Sulfidation, Silica</li> </ul>
✓	Geochemistry	<ul style="list-style-type: none"> <li>Au, Ag, As, Bi, Cu, Sb, Pb, Zn</li> </ul>
✓	High-Grade Mineralization	<ul style="list-style-type: none"> <li>Archean Orogenic gold style mineralization systems</li> <li>High-grade and visible orogenic gold proven (168 g/t Au)</li> </ul>
✓	Land Position	<ul style="list-style-type: none"> <li>5 district-scale assets across 150 km Archean belt</li> <li>Big enough to host the largest known orogenic type deposits</li> <li>Well established infrastructure, access, water, and power</li> </ul>
✓	Scalable Opportunity	<ul style="list-style-type: none"> <li>Connection to Abitibi during gold mineralization (2.65 ba)</li> <li>Multiple high-grade targets with Abitibi-scale potential</li> </ul>
✓	Permitting	<ul style="list-style-type: none"> <li>Streamlined State and Federal permitting pathway</li> <li>Multiple exploration permits in hand</li> <li>Wyoming has deep roots in mining and natural resources</li> </ul>



\*2020 Trench sample collected by Golden Buffalo Mining Company







# 2025 ANTICIPATED CATALYSTS

## EXPLORATION GOALS



### PERMITTING

- Finalize permit application for 2025 exploration drilling at Bradley Peak (Apex target)
- Advance the permitting efforts at additional targets
- Reclamation at past drilling sites to recoup cash bond.
- Consider additional permitting needs for phase 2 drilling at Lewiston and Golden Buffalo
- Permit trenching at Golden Buffalo



### ADVANCED GEOPHYSICS

- Leveling and 3-D inversions of regional magnetics data
- Conduct Airborne VTEM surveys at Bradley Peak and IP/MT surveys at South Pass to refine our understanding of the systems at depth



### EXPLORATION DRILLING

Phase 1 drill program at Bradley Peak (Apex target)

- Phase 1 - 5,000 m diamond core drill program underway
- Program will test the subsurface structure and mineralization at Apex, where 2024 surface samples returned **46.8 g/t Au, 7.8% Cu, and 2% Zn** from a 2.5 km structural zone centered in a 100 km<sup>2</sup> geophysical anomaly.
- Phase 2 drill planning and design at Lewiston and Golden Buffalo



### MAPPING & SAMPLING

- 2024 Windy Flats soil sampling program collected 1,500 samples across an ~18 km<sup>2</sup> area; samples will be processed and assayed in 2025
- Detailed mapping and sampling planned for new ground at Bradley Peak.
- Mapping and sampling follow-up at Windy Flats as needed.







# WHY INVEST?

## **TIGHTLY HELD STRUCTURE:**

~103M shares  
outstanding  
Major shareholders:  
Management, Kinross  
Gold, Mr. Bill Bollinger,  
Mr. Rob McEwen

## **UPSIDE MULTIPLIER:**

A belt-scale concept  
with a pipeline of  
discovery  
opportunities

## **FIRST MOVER ADVANTAGE:**

50k-acre land package  
with 5 district-scale  
projects in mining-  
friendly Wyoming

## **GRADE IS KING:**

Proven high-grade  
orogenic gold at  
surface and at depth

## **STRONG MARKET POSITION:**

A unique discovery  
opportunity with  
many near-term  
catalysts and recent  
successes

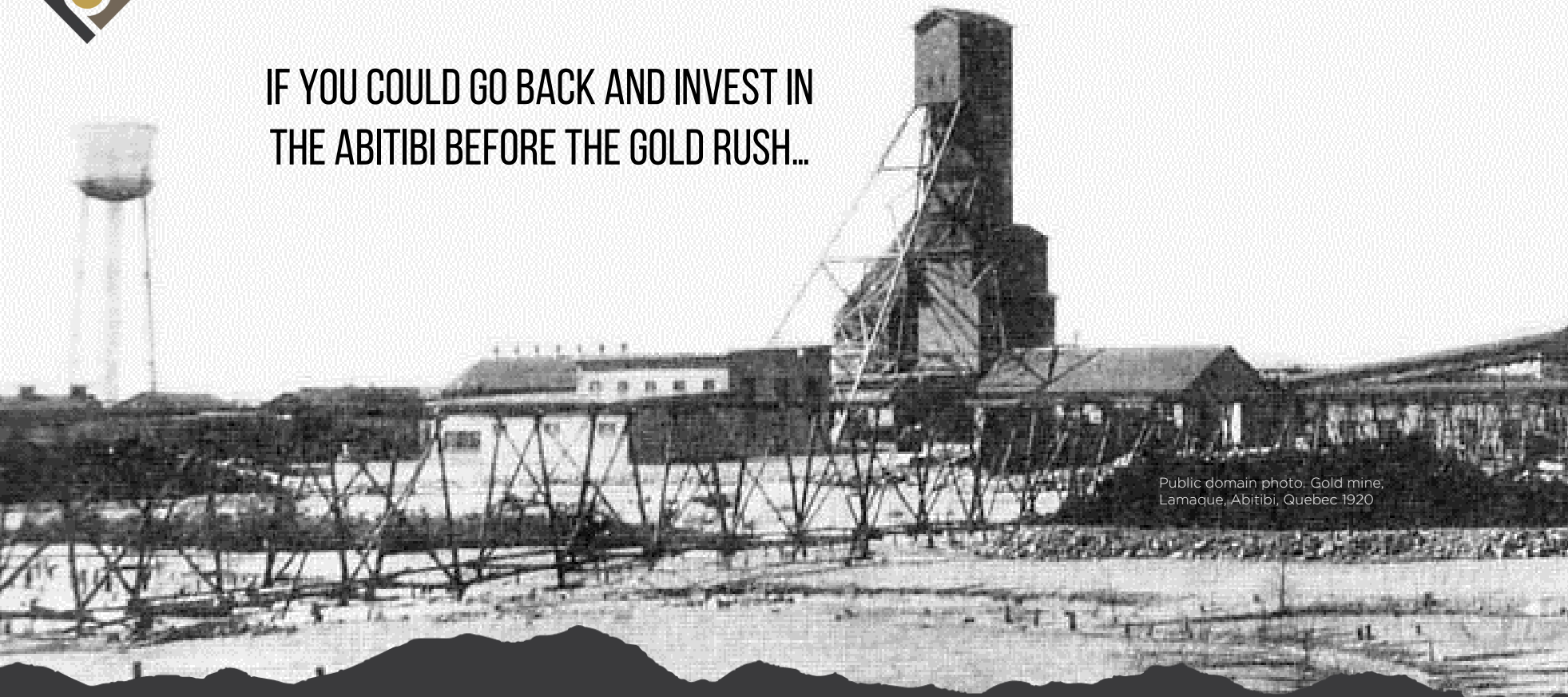
## **HUMAN CAPITAL INFRASTRUCTURE:**

Proven execution  
team and a unique  
toolkit for turnkey  
exploration support  
with Big Rock





IF YOU COULD GO BACK AND INVEST IN  
THE ABITIBI BEFORE THE GOLD RUSH...



Public domain photo: Gold mine,  
Lamaque, Abitibi, Quebec 1920

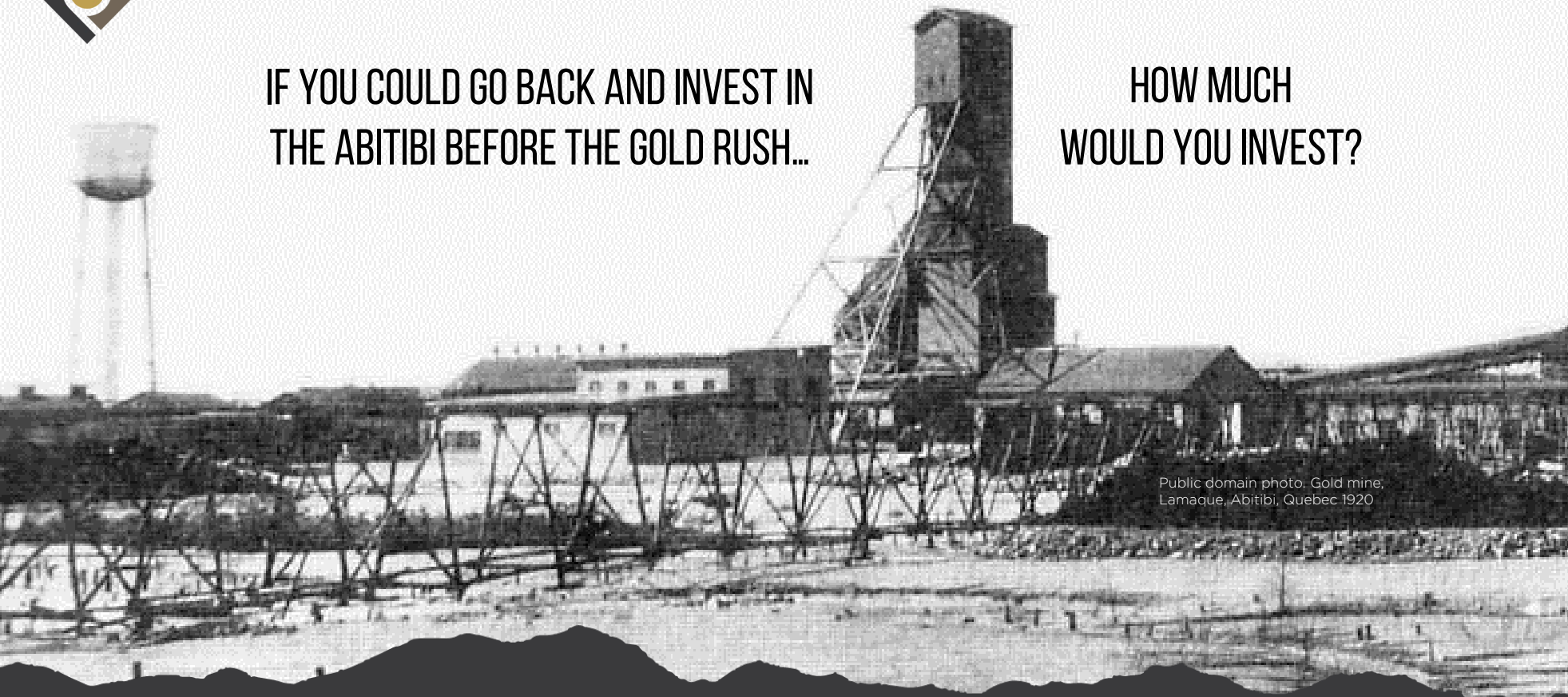






IF YOU COULD GO BACK AND INVEST IN  
THE ABITIBI BEFORE THE GOLD RUSH...

HOW MUCH  
WOULD YOU INVEST?



Public domain photo: Gold mine,  
Lamaque, Abitibi, Quebec 1920





# JOIN US FOR THE NEXT BIG DISCOVERY

[WWW.RELEVANTGOLDCORP.COM](http://WWW.RELEVANTGOLDCORP.COM)

[@RELEVANTGOLDCORP](#)



FOR QUESTIONS & INFORMATION, PLEASE CONTACT:

[investorrelations@relevantgoldcorp.com](mailto:investorrelations@relevantgoldcorp.com)

+1-763-760-4886

**RELEVANT GOLD**

TSXV:RGC | OTCQB:RGCCF

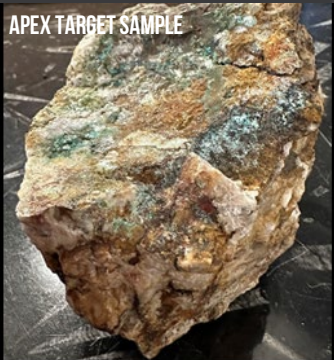




# BRADLEY PEAK HIGHLIGHTS

## PROJECT OVERVIEW

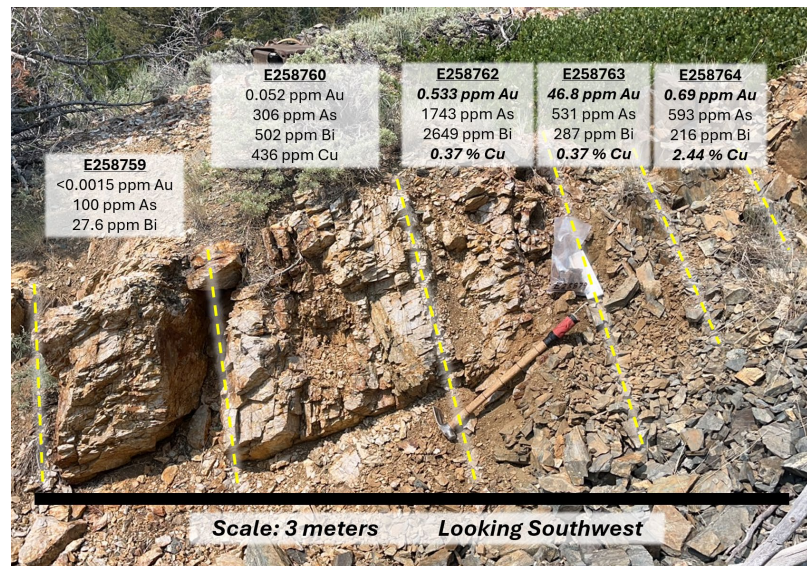
APEX TARGET SAMPLE



DESERTED TREASURE TARGET SAMPLE



- **10,800** acres (4,391 ha) footprint
- **7** high-grade targets identified in **3** district-scale target zones
  - Kortes, Apex, and Deserted Treasure
- **46.8 g/t Au, 7.8% Cu, 2% Zn** (RGC rock chip samples)
- **89 g/t Au, 5.8% Cu** (historic rock chip sample)
- 2023 airborne geophysics depicts a massive 100+ km<sup>2</sup> fold hinge anomaly
- **>2.5 km trend** of mineralized structure at Apex
- **50+ km** of new shear zones mapped
- 2024 mapping/sampling program results pending



*"The high-grade gold, silver, and copper targets we have identified at Bradley Peak show significant potential, and the geophysical data indicates this is an opportunity of scale. These new acquisitions secure additional prospective ground and create a buffer around our highest-priority targets as we focus on expediting drill permitting."* - RGC CEO Rob Bergmann



# PORTFOLIO SUMMARY

## SOUTH PASS CAMP

### SIZE / SCALE

#### ~32,000 ACRES

Mix of BLM, state lease claims, and patented / private ground located near the Wind River Mountains in west-central Wyoming

### OPPORTUNITY

#### 4 PROJECTS, 11 TARGETS

Golden Buffalo, Lewiston, Shield Carissa, Windy Flats

### SAMPLING HIGHLIGHTS

- **160 g/t Au** (Golden Buffalo)
- **62 g/t Au, 8.1% Cu** (Lewiston)
- **18.9 g/t Au, 486 g/t Ag** (Shield-Carissa)
- **20 m trench** produced **500 oz Au** (Golden Buffalo)

### DRILLING HIGHLIGHTS\*

Golden Buffalo (2022):

- **3,500 m** program
- Top intercept: **83.8 g/t Au** over 1 m
- **54%** of holes intersected gold mineralization

Lewiston (2023, 2024):

- **-3,200 m** (two programs)
- **16 of 17** holes intersected gold mineralization
- Top intercepts: **2.2 g/t Au** over 1.5 m, **0.35 g/t Au** over 10 m, **0.13 g/t Au** over 23 m

\*All drill results reported in core length

### UPCOMING CATALYSTS:

- **Advanced Geophysics, Mapping, and Sampling** to support **drill target refinement** in preparation for future follow-up drill programs at Lewiston and Golden Buffalo.
- Geologic Mapping, sampling, and target identification work at Shield-Carissa, Windy Flats





# GOLDEN BUFFALO HIGHLIGHTS

## PROJECT OVERVIEW



Coarse Gold in Shear Zone Quartz Veins

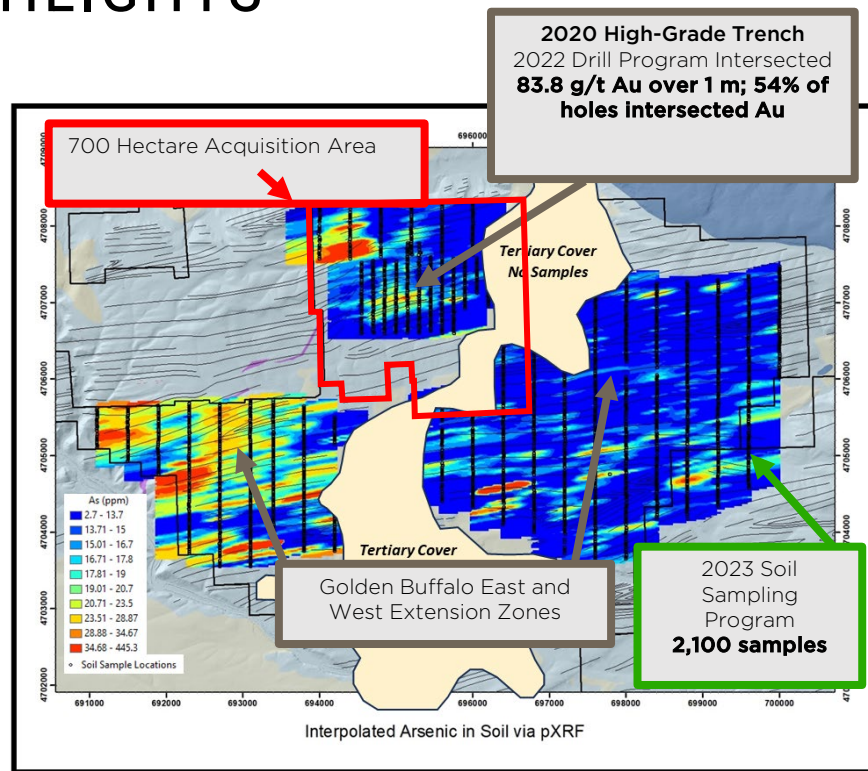


Gold Nuggets



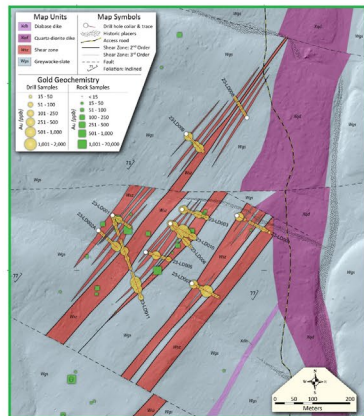
Fine Gold Panned from Surface Materials

- **9,600** acres (3,884 ha) footprint
- **2** high-grade targets defined
- 2020 trench produced ~500 oz Au (pictured left)
- **2022 Drill Program:**
  - **3,500 m** drilled at Golden Buffalo target
  - Cut gold in **54%** holes
  - Top interval: **83.8 g/t Au over 1 m**
- Golden Buffalo Shear Zone (GBSZ) extended to **> 2 km** of strike
- **160 g/t Au** (RGC rock chip sample)
- 2023 soil survey defined 3.5 km<sup>2</sup> geochemical anomaly GBSZ strike extension

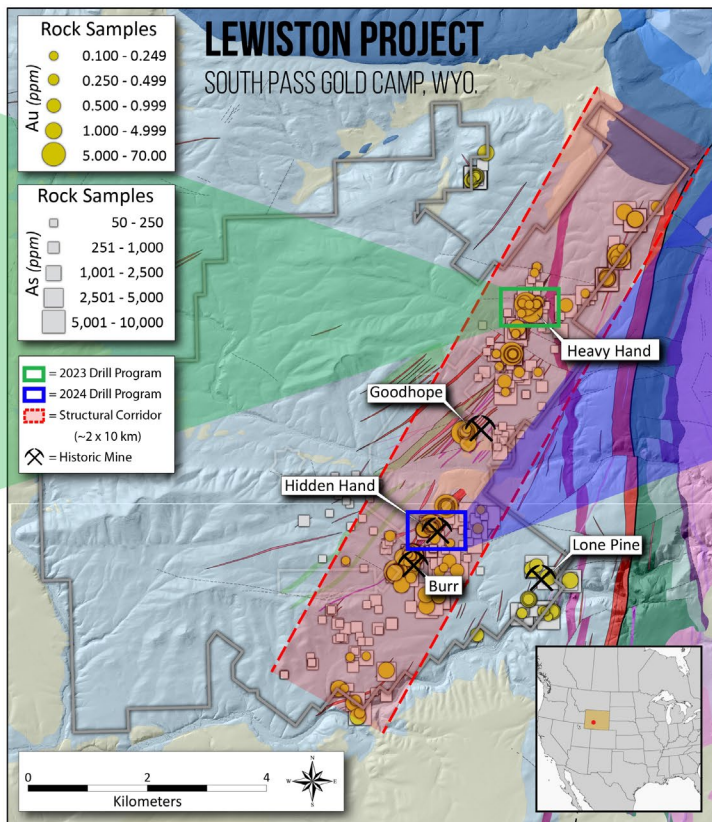
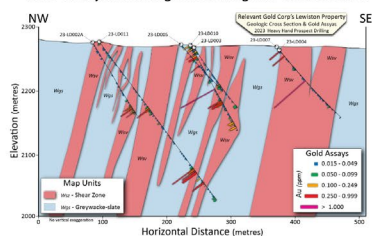


# LEWISTON PROJECT DRILLING SUMMARY

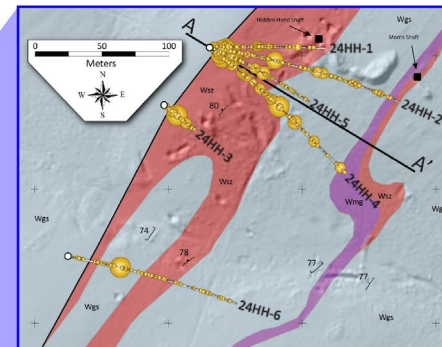
2023 Heavy Hand Target Drill Program Plan View



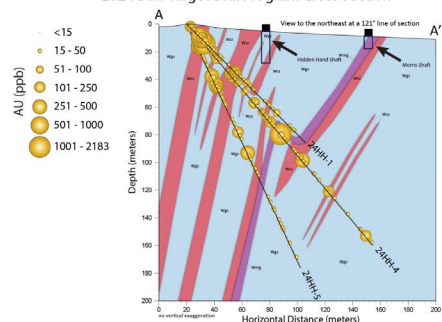
2023 Heavy Hand Target Drill Program Cross Section



2024 Burr Target Drill Program Plan View



2024 Burr Target Drill Program Cross Section





# PORTFOLIO SUMMARY

## BRADLEY PEAK CAMP

### SIZE / SCALE

#### 10,800 ACRES

Mix of BLM and state lease claims located in the Seminoe Mountains in central Wyoming

### OPPORTUNITY

#### 6 TARGETS

Apex, Kortez, Deserted Treasure, Lost Mine, Olmeh, East Limb

### STRUCTURAL HIGHLIGHTS

#### >50 KM

of potentially mineralized shear zones identified

#### ~100 km<sup>2</sup>

geophysical anomaly highlights secondary structures hosting high-grade mineralization.

### SAMPLING HIGHLIGHTS

- **46.8 g/t Au, 7.8% Cu, 2% Zn** (RGC 2024 samples)
- **5.3 g/t Au, 107 g/t Ag, 6.25% Cu** (RGC 2023 samples)
- **72.4 g/t Au, 3.7% Cu** (RGC 2019 samples)
- **89 g/t Au, 5.8% Cu** (historic samples)

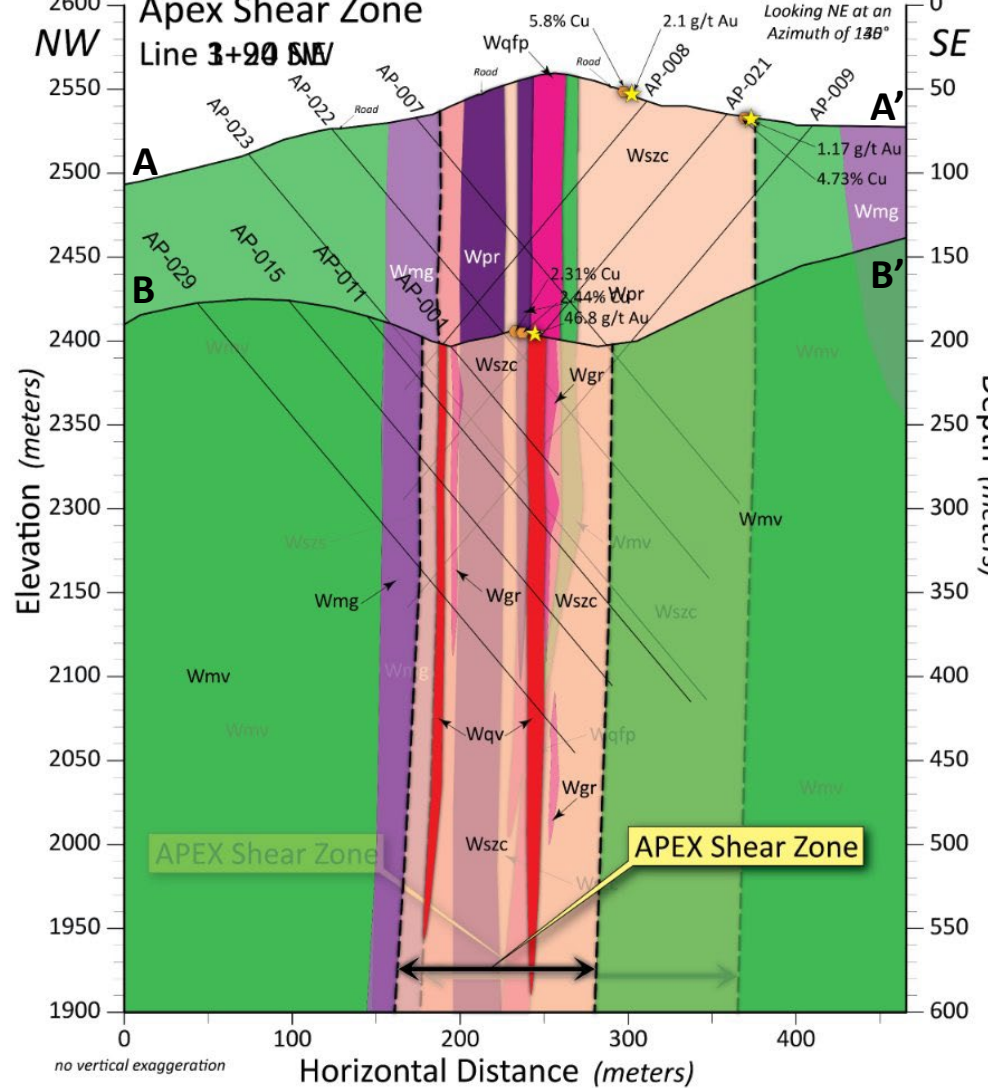
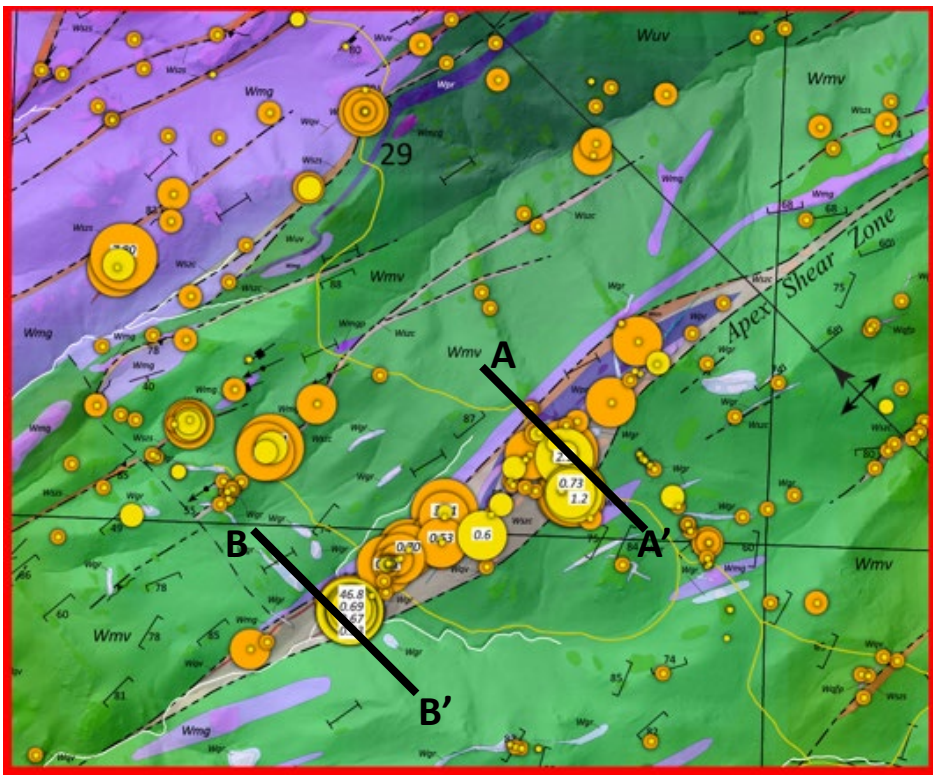


### UPCOMING CATALYSTS:

- **5,000+ m drill program** (currently underway) will provide the first test of subsurface mineralization at our exciting Apex Target where 2024 surface samples returned **46.8 g/t Au, 7.8% Cu**, and **2% Zn**.











# BELT-SCALE OPPORTUNITY

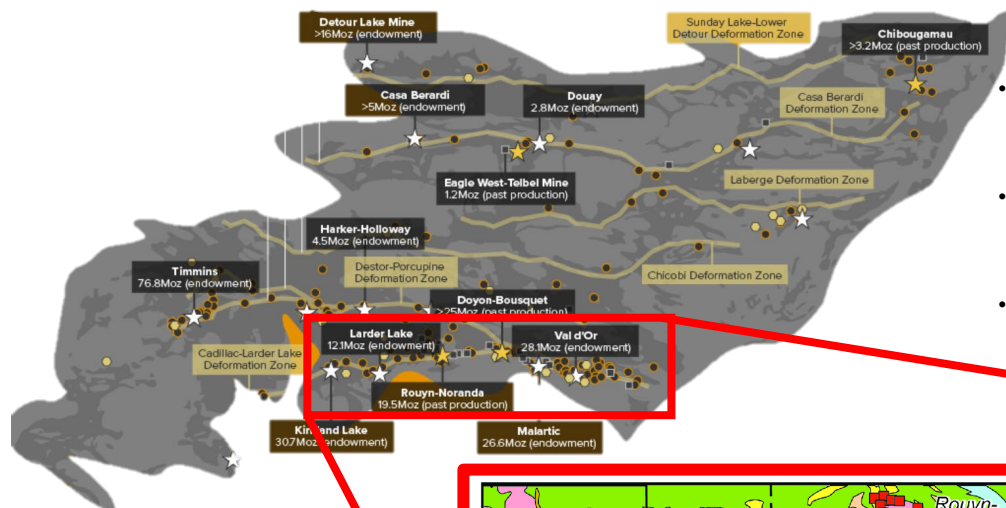


Figure Source: Modified from Visual Capitalist, Canada's Gold Exploration Frontier: The Abitibi Greenstone Belt, May 19, 2021

- New Wyoming magnetics survey confirms Archean structure comparable in size and scale to the Cadillac-Larder Lake Deformation Zone
- Gold mineralization commonly occurs in secondary structures within 7 km of the major structures in the Abitibi and Wyoming.
- *The magnetic data confirms we have some of the best discovery opportunities on Wyoming's main street!*

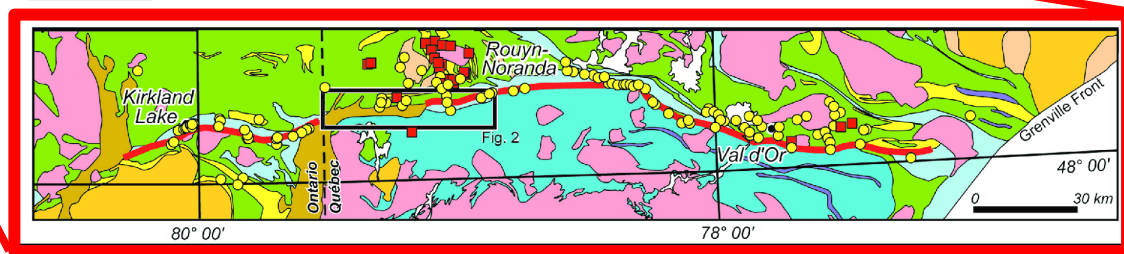


Figure Source: Rabeau et. al., 2011, Modified from Gold Potential of a Hidden Archean Fault Zone: The Case of the Cadillac-Larder Lake Fault, VL - 19, DO - 10.2113/gsemp.19.3-4.99, JO - Exploration and Mining Geology ER

